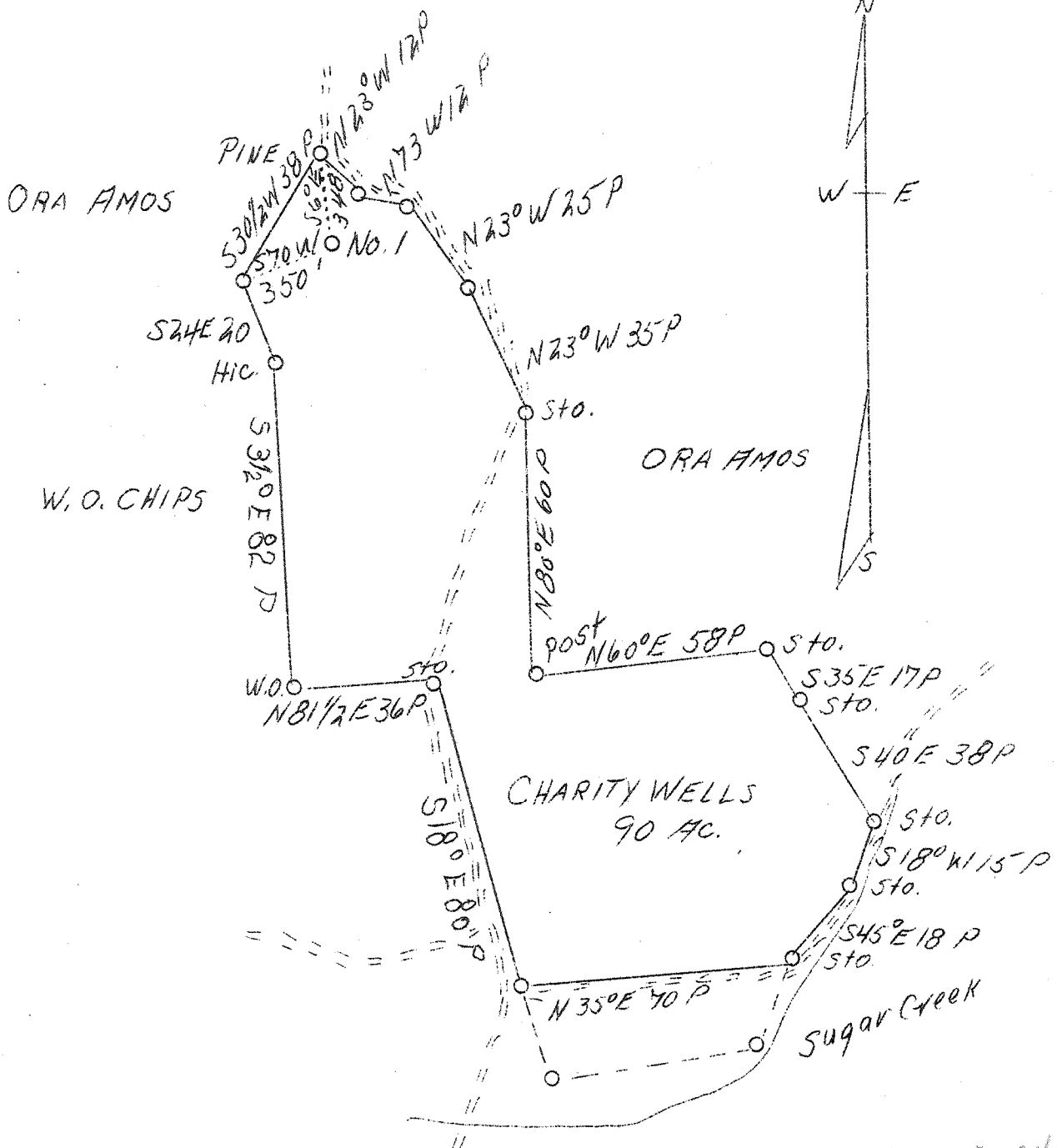


LATITUDE 39° 25'



LONGITUDE 81° 00'



W. 2.04
S - 132

ABD.

Company	Casto Oil Company
Address	Charleston, W.Va.
Farm	Charity Wells
Acres	90
Lease No.	7
Well(Farm)No.	1
El.(S.L.)	925
Quadrangle	St. Marys E
County	Pleasants
District	Union
Eng.	J.V.Dunbar
Eng. Reg. No.	65
File No.	C - 23 - L
Date	4/9/39
Scale	1" = 660'

STATE OF WEST VIRGINIA
Department of Mines
OIL AND GAS DIVISION
Charleston

WELL LOCATION MAP

File No. Pleas-136-A

x Denotes location of well on U.S. Topographic Maps, scale 1 to 62,500, latitude and longitude lines being represented by border lines as shown.

-- Denotes one inch spaces on border line of original tracing.