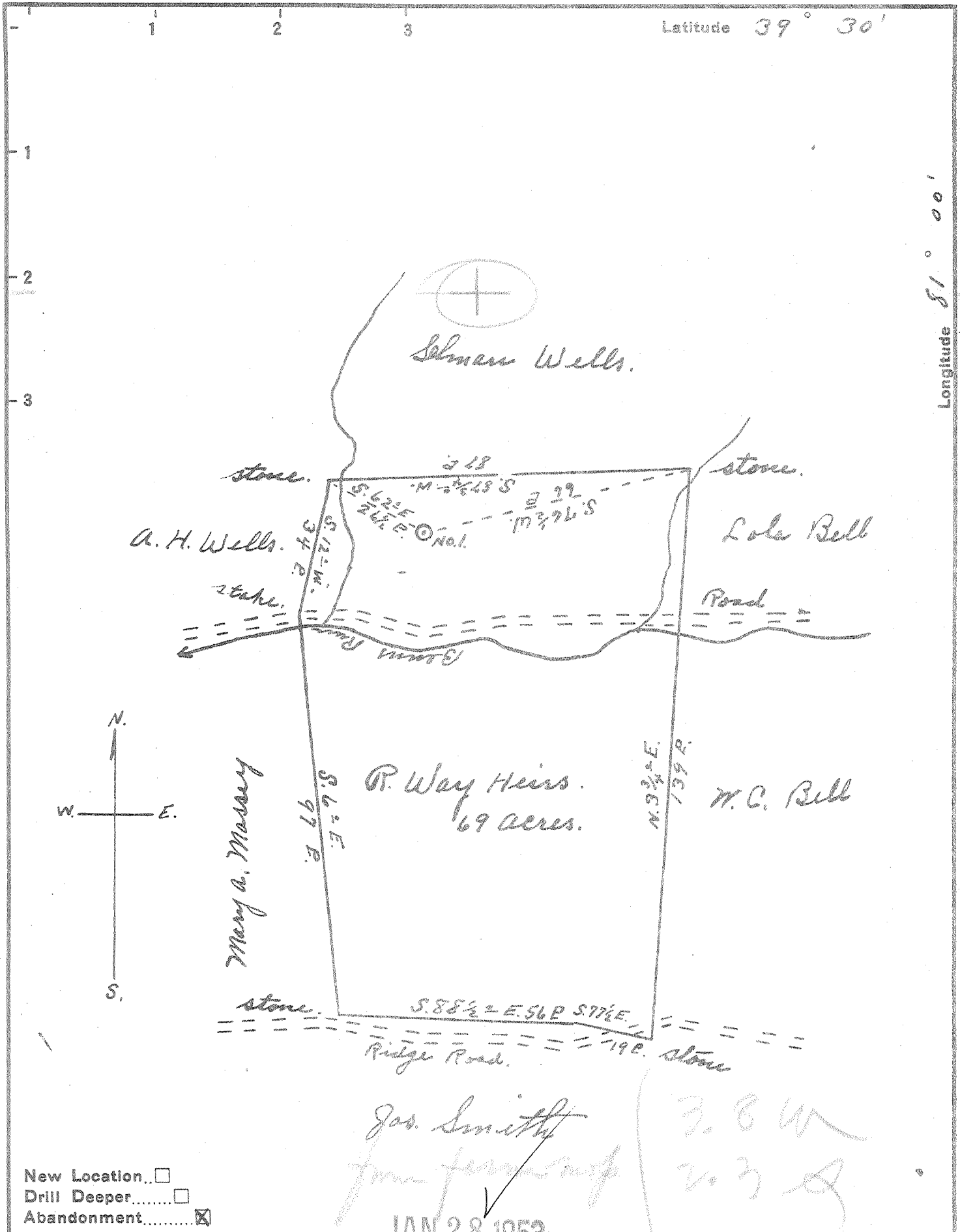


Latitude 39° 30'

Longitude 81° 00'



New Location...   
 Drill Deeper...   
 Abandonment...

Company Charles Smith  
 Address Chelsea St. Sistersville W. Va.  
 Farm R. Way Heirs  
 Tract \_\_\_\_\_ Acres 69 Lease No. \_\_\_\_\_  
 Well (Farm) No. 1 Serial No. \_\_\_\_\_  
 Elevation (Spirit Level) 900'  
 Quadrangle St. Marys  
 County Tyler, Pleasants District Union  
 Engineer Robert R. Anderson  
By Jno. Triplett, Surveyor  
 Engineer's Registration No. 296  
 File No. \_\_\_\_\_ Drawing No. \_\_\_\_\_  
 Date Oct. 13, 1952 Scale 1" = 30 P.

STATE OF WEST VIRGINIA  
 DEPARTMENT OF MINES  
 OIL AND GAS DIVISION  
 CHARLESTON

WELL LOCATION MAP  
 FILE NO. PLEAS-556-A

+ Denotes location of well on United States Topographic Maps, scale 1 to 62,500, latitude and longitude lines being represented by border lines as shown.

- Denotes one inch spaces on border line of original tracing.