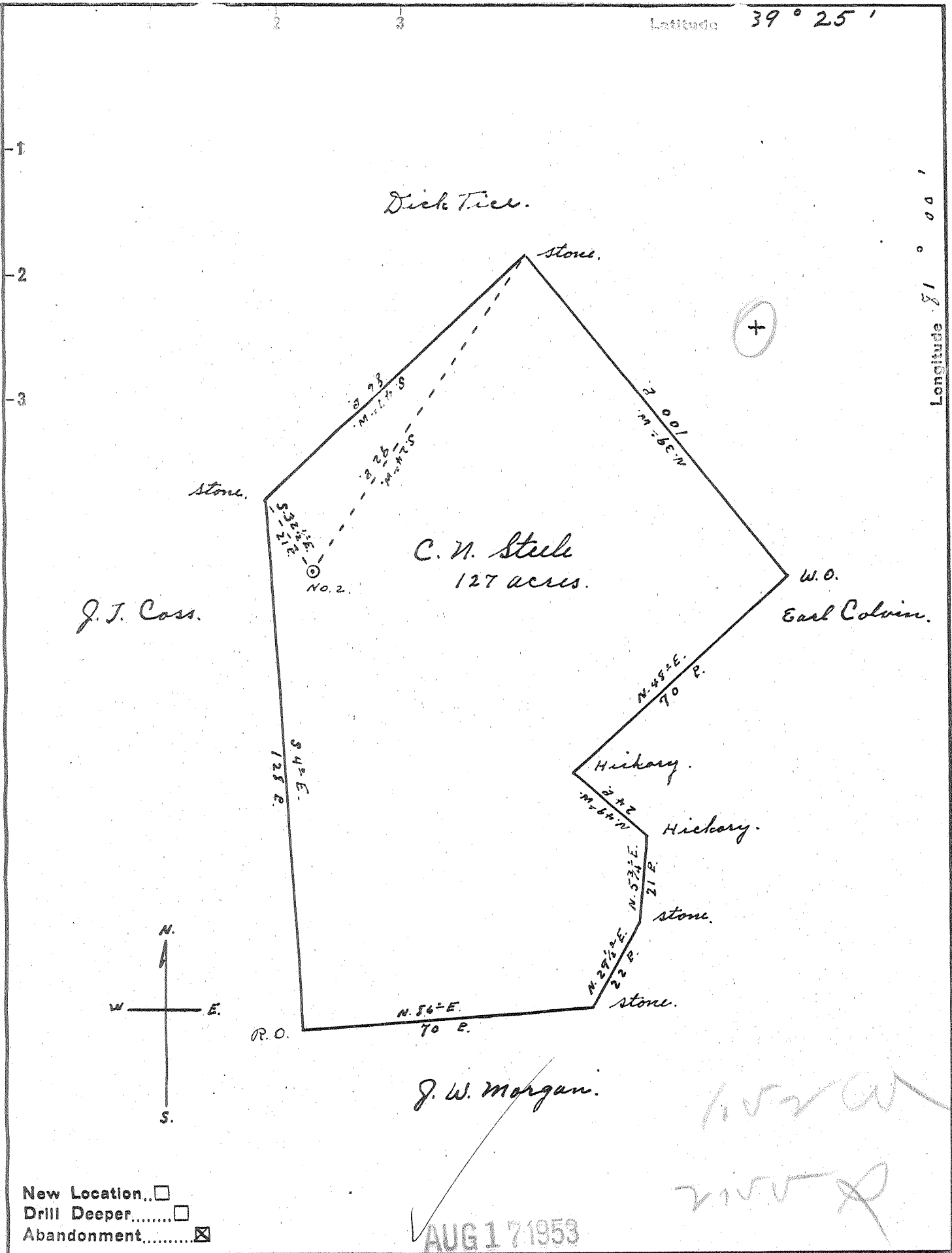


Latitude 39° 25'

Longitude 81° 00'



New Location...
 Drill Deeper.....
 Abandonment.....

AUG 17 1953

Company St. Marys Pipe & Supply Co.
 Address St. Marys W. Va.
 Farm C. N. Steele
 Tract _____ Acres 127 Lease No. _____
 Well (Farm) No. 2 Serial No. _____
 Elevation (Spirit Level) 1020'
 Quadrangle St. Marys
 County Pleasants District Lafayette
 Engineer Robert R. Anderson
 By Jno. Triplett, Surveyor
 Engineer's Registration No. 296
 File No. _____ Drawing No. _____
 Date July 29, 1950 Scale 1" = 30 P.

STATE OF WEST VIRGINIA
 DEPARTMENT OF MINES
 OIL AND GAS DIVISION
 CHARLESTON

WELL LOCATION MAP
 FILE NO. PLEAS-575-A

+ Denotes location of well on United States Topographic Maps, scale 1 to 62,500, latitude and longitude lines being represented by border lines as shown.

- Denotes one inch spaces on border line of original tracing.

C. N. STEELE No. 2 - ST. MARYS PIPE & SUPPLY CO. - PLEAS-575-A