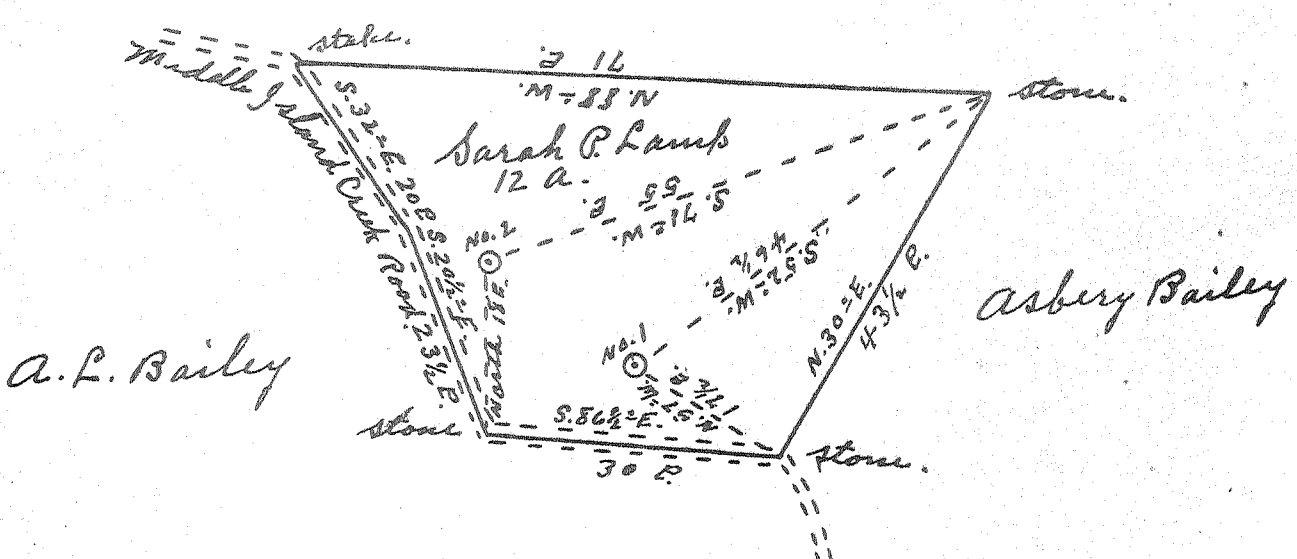


Latitude 39° 25'

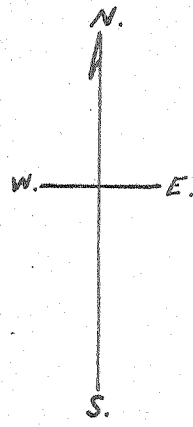
Longitude 81° 05'

Anna Elder.

10



Chas. Delong.



1 / 1.055  
 4.80 W 0.08 W

---

2 / 1.055  
 4.5 W 0.13 W

New Location..   
 Drill Deeper.....   
 Abandonment.....

Company Patterson & Zimm  
 Address Route 5, Marietta, Ohio.  
 Farm Sarah P. Lamp.  
 Tract \_\_\_\_\_ Acres 12 Lease No. \_\_\_\_\_  
 Well (Farm) No. 1 & 2 Serial No. \_\_\_\_\_  
 Elevation (Spirit Level) No. 1, 700'. No. 2, 710'.  
 Quadrangle St. Marys  
 County Pleasant District Union  
 Engineer Robert K. Anderson  
 By Jno. Triplett, Surveyor.  
 Engineer's Registration No. 296  
 File No. \_\_\_\_\_ Drawing No. \_\_\_\_\_  
 Date Dec. 11, 1954 Scale 1" = 20 P.

STATE OF WEST VIRGINIA  
 DEPARTMENT OF MINES  
 OIL AND GAS DIVISION  
 CHARLESTON

WELL LOCATION MAP  
 FILE NO. PLEAS-674-A-#1  
PLEAS-675-A-#2

+ Denotes location of well on United States Topographic Maps, scale 1 to 62,500, latitude and longitude lines being represented by border lines as shown.  
 - Denotes one inch spaces on border line of original tracing.