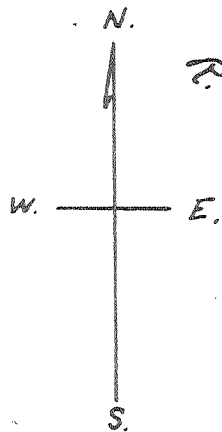
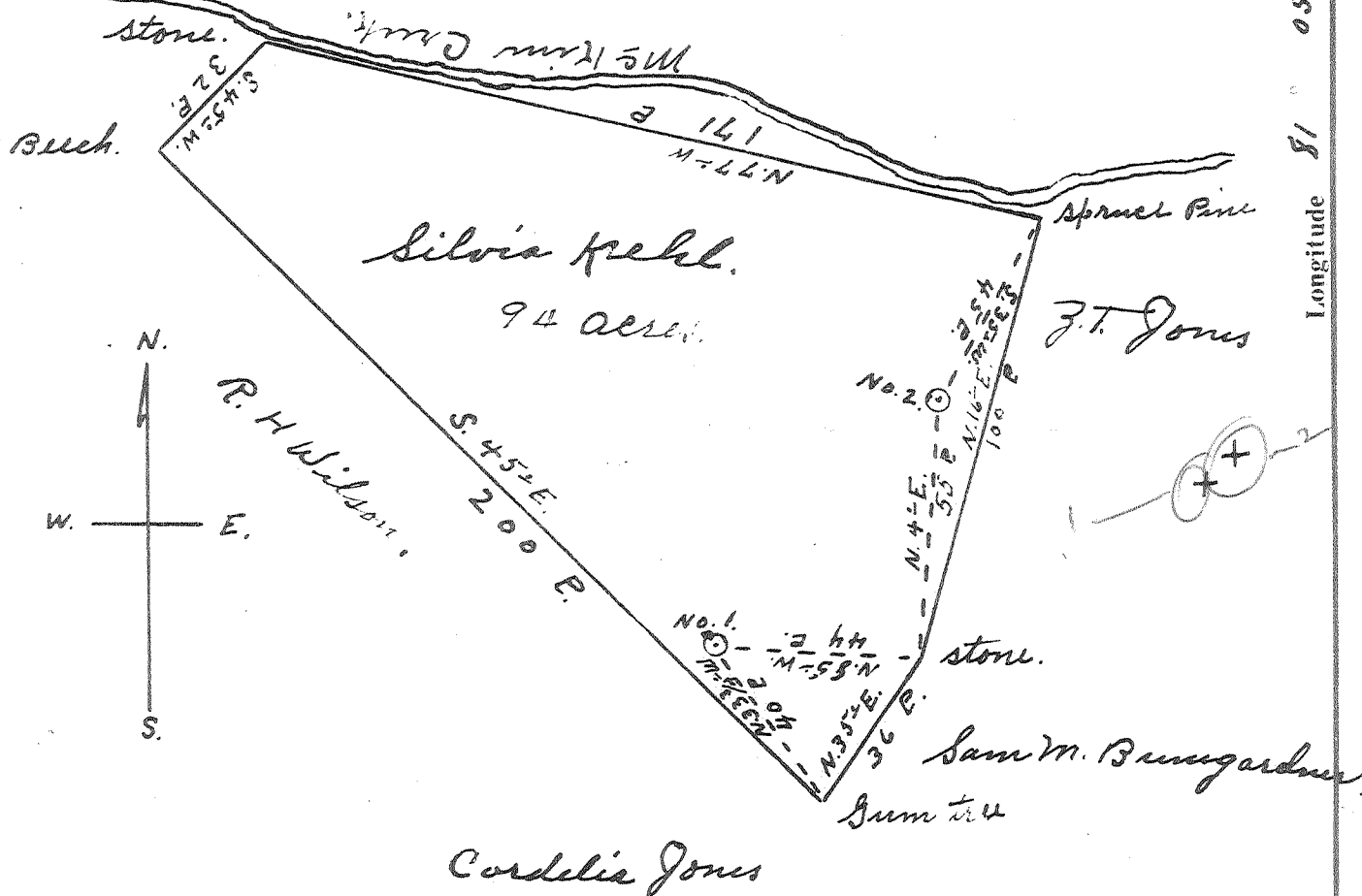


F. M. Camp

J. W. Garrell



#1 0.7 W  
4.18 A

#2 0.52 W  
4.0 A

OCT 26 1959

- New Location
- Drill Deeper
- Redrill
- Abandonment

Company J. & M. Oil Company

Address 107 Lafayette St. St. Marys, W. Va.

Farm Silvia Kehl

Tract \_\_\_\_\_ Acres 94 Lease No. \_\_\_\_\_

Well (Farm) No. 1 & 2 Serial No. \_\_\_\_\_

Elevation (Spirit Level) No. 1. 800' No. 2. 860'

Quadrangle St. Marys

County Pleasants District McKean

Engineer Parker E. Peltz

Engineer's Registration No. 485

File No. \_\_\_\_\_ Drawing No. \_\_\_\_\_

Date May 27, 1959 Scale 40-P = 1"

STATE OF WEST VIRGINIA  
DEPARTMENT OF MINES  
OIL AND GAS DIVISION  
CHARLESTON

WELL LOCATION MAP

FILE NO. PLEAS-734-A

+ Denotes location of well on United States Topographic Maps, scale 1 to 62,500, latitude and longitude lines being represented by border lines as shown.

— Denotes one inch spaces on border line of original tracing.

SILVIA KEHL NOS. 1 & 2 (R) J. & M. OIL Co.

PLEAS-734-A