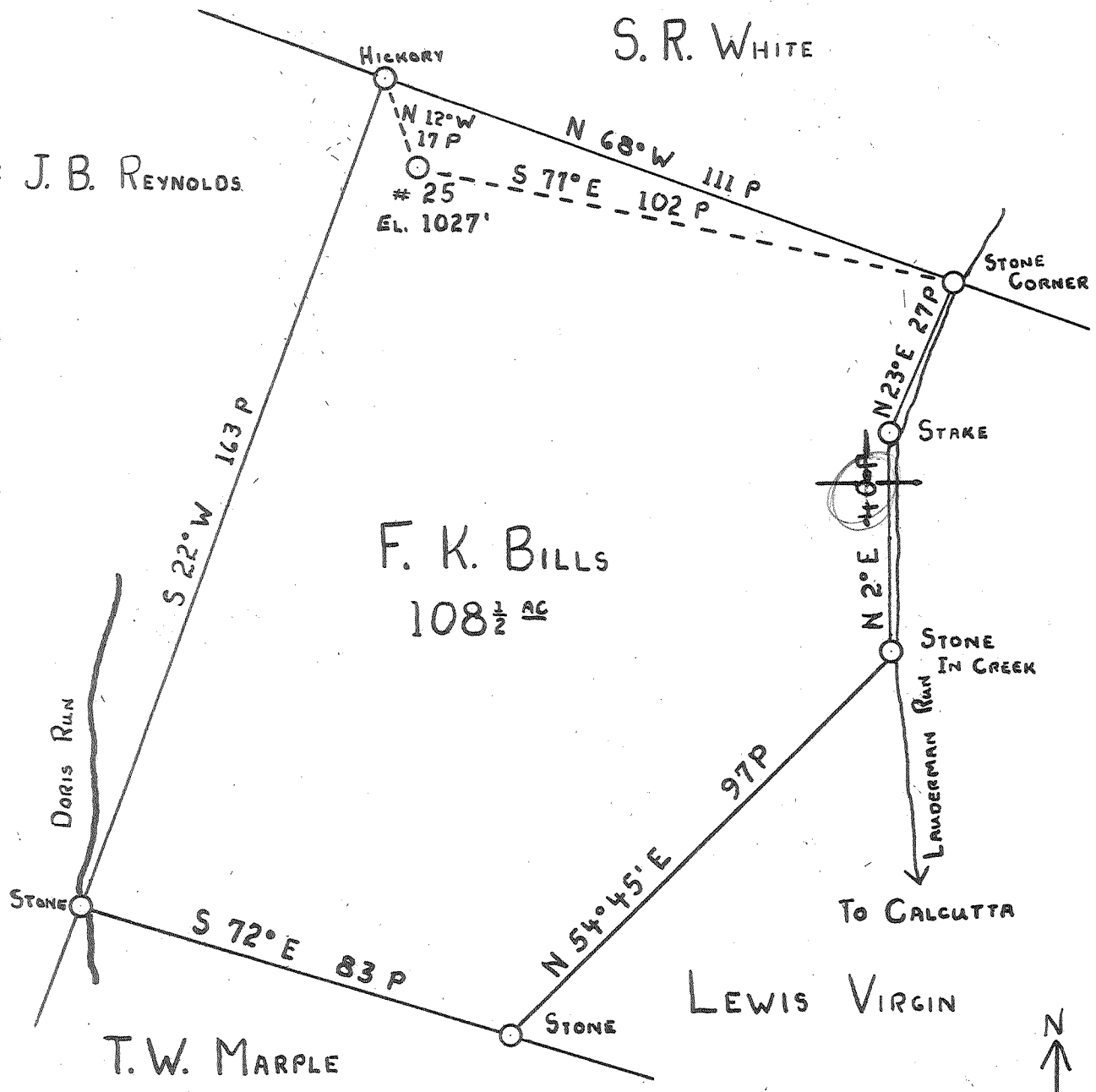


Latitude 39° 25'

Longitude 81° 10'



New Location
 Drill Deeper
 Abandonment

JUN 6 1960

Handwritten signatures and initials

Company	HART & HAMILTON
Address	Box 26, ST. MARYS, W.VA.
Farm	F. K. BILLS
Tract	Acres 108 1/2 Lease No.
Well (Farm) No.	25 Serial No. 17
Elevation (Spirit Level)	1027'
Quadrangle	ST. MARYS
County	PLEASANTS District WASHINGTON
Engineer	JOHN W. HAMILTON
Engineer's Registration No.	2274
File No.	Drawing No.
Date	11-11-59 Scale 1" = 30 P

STATE OF WEST VIRGINIA
 DEPARTMENT OF MINES
 OIL AND GAS DIVISION
 CHARLESTON

WELL LOCATION MAP
 FILE NO. PLEAS-818-A

+ Denotes location of well on United States Topographic Maps, scale 1 to 62,500, latitude and longitude lines being represented by border lines as shown.
 - Denotes one inch spaces on border line of original tracing.

Handwritten notes at the bottom of the page:
 F. K. BILLS No. 25 (17) - HART & HAMILTON - PLEAS-818-A