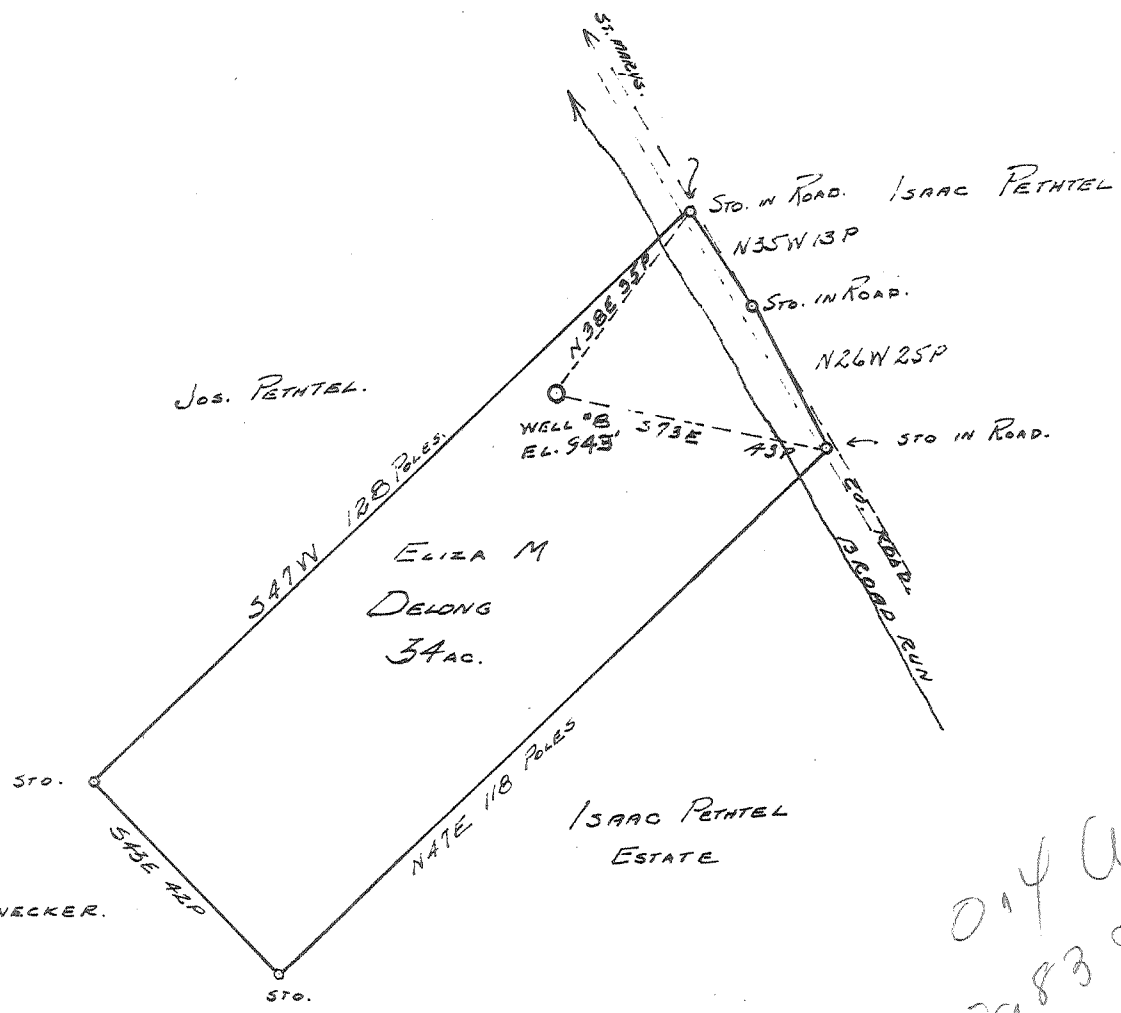
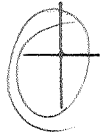


Latitude 39 ° 25 ' 1

Longitude 81 ° 10 ' 1



014 W  
 2183 2

New Location   
 Drill Deeper   
 Abandonment

JUN 27 1960

Company	HART & HAMILTON
Address	ST. MARYS, W. VA.
Farm	ELIZA M. DELONG
Tract	Acres 34 Lease No. 46
Well (Farm) No.	8 Serial No. 117
Elevation (Spirit Level)	943'
Quadrangle	ST. MARYS. (W)
County	PLEASANTS District WASHINGTON
Engineer	JOHN W. HAMILTON
Engineer's Registration No.	2274
File No.	Drawing No.
Date	MAY 10, 1960 Scale 1" = 30 P

STATE OF WEST VIRGINIA  
 DEPARTMENT OF MINES  
 OIL AND GAS DIVISION  
 CHARLESTON

WELL LOCATION MAP  
 FILE NO. PLEAS-833-A

+ Denotes location of well on United States Topographic Maps, scale 1 to 62,500, latitude and longitude lines being represented by border lines as shown.  
 - Denotes one inch spaces on border line of original tracing.

ELIZA M. DELONG No. 8 (117) - HART & HAMILTON - PLEAS-833-A