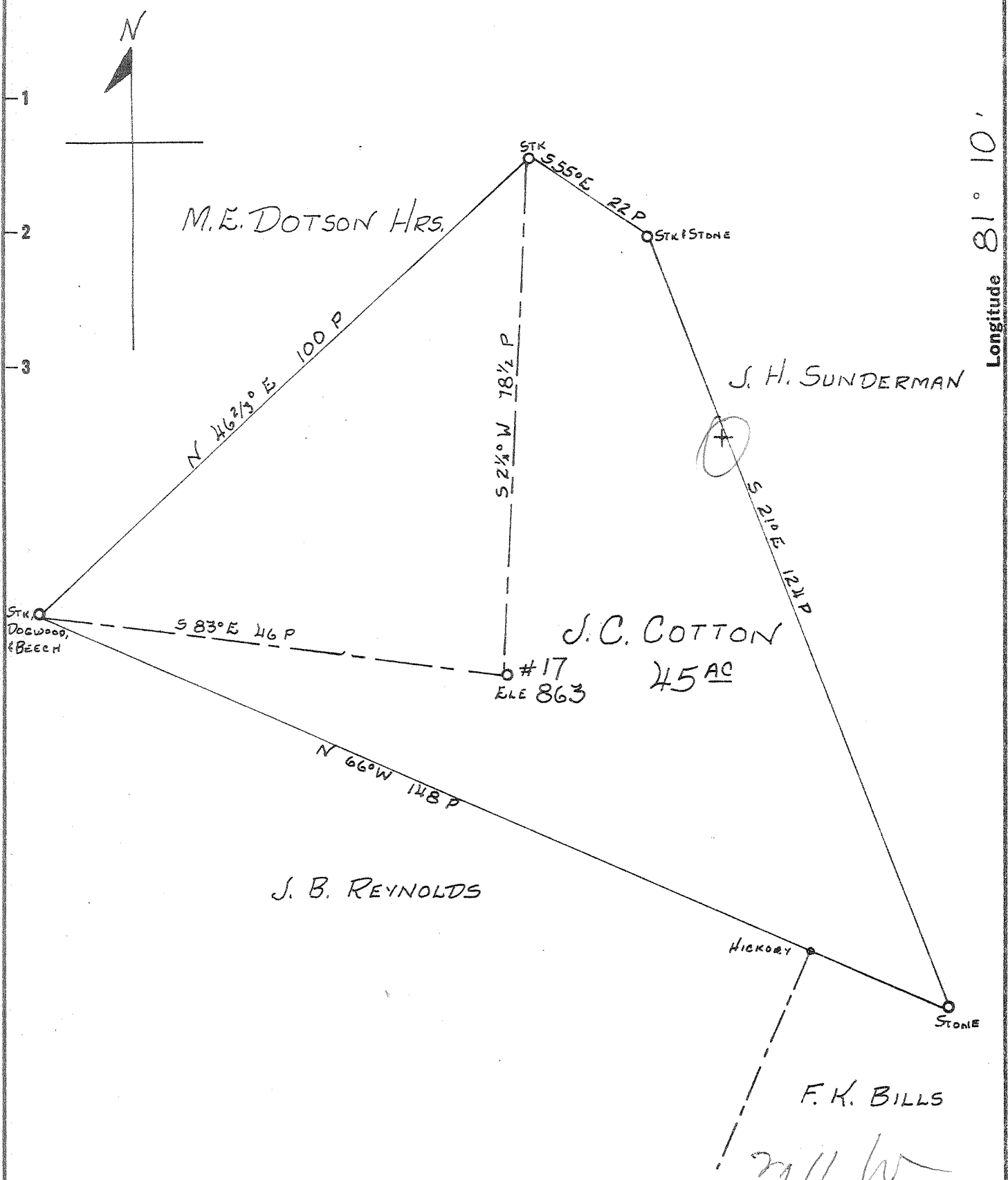


Latitude 39° 25'

Longitude 81° 10'



New Location ..   
 Drill Deeper .....   
 Abandonment.....

JUL 24 1961

will w  
 307 9

Company	LEONARD HART
Address	702 2 <sup>ND</sup> ST. ST. MARYS, W. VA.
Farm	J. C. COTTON 45-A
Tract	1
Acres	45
Lease No.	12
Well (Farm) No.	17
Serial No.	10
Elevation (Spirit Level)	863
Quadrangle	ST. MARYS
County	PLEASANTS District WASHINGTON
Engineer	John W. Hamilton
Engineer's Registration No.	2274
File No.	
Drawing No.	
Date	MAY 1, 1961
Scale	1" = 20 P

STATE OF WEST VIRGINIA  
 DEPARTMENT OF MINES  
 OIL AND GAS DIVISION  
 CHARLESTON

**WELL LOCATION MAP**  
 FILE NO. PLEAS-899-A

+ Denotes location of well on United States Topographic Maps, scale 1 to 62,500, latitude and longitude lines being represented by border lines as shown.  
 - Denotes one inch spaces on border line of original tracing.



271

STATE OF WEST VIRGINIA  
DEPARTMENT OF MINES  
OIL AND GAS DIVISION

Quadrangle St. Marys

Permit No. 899A

WELL RECORD

Oil or Gas Well Oil  
(KIND)

Company Leonard Hart  
Address 702 Second Street, St. Marys, W. Va.  
Farm J. C. Cotton Acres 45  
Location (waters) Long Run  
Well No. 17 Elev. 863  
District Washington County Pleasants  
The surface of tract is owned in fee by J.C.Cotton Heirs  
Address \_\_\_\_\_  
Mineral rights are owned by J.C.Cotton Heirs  
Address \_\_\_\_\_

Casing and Tubing	Used in Drilling	Left in Well	Packers
Size			Kind of Packer
16			
13			
10			Size of
8 1/4			
<del>5 1/4</del> 6-1/4	666'		Depth set
5 3/16			
3			Perf. top
2			Perf. bottom
Liners Used			Perf. top
			Perf. bottom

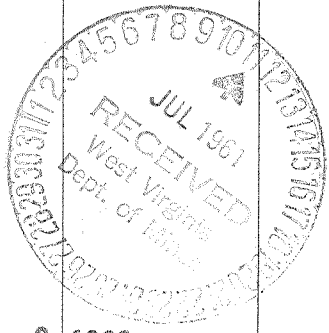
Drilling commenced \_\_\_\_\_  
Drilling completed March, 1901  
Date Shot \_\_\_\_\_ From \_\_\_\_\_ To \_\_\_\_\_  
With \_\_\_\_\_  
Open Flow \_\_\_\_\_ /10ths Water in \_\_\_\_\_ Inch  
\_\_\_\_\_ /10ths Merc. in \_\_\_\_\_ Inch  
Volume \_\_\_\_\_ Cu. Ft.  
Rock Pressure \_\_\_\_\_ lbs. \_\_\_\_\_ hrs.  
Oil \_\_\_\_\_ bbls., 1st 24 hrs.  
WELL ACIDIZED \_\_\_\_\_  
WELL FRACTURED \_\_\_\_\_

CASING CEMENTED \_\_\_\_\_ SIZE \_\_\_\_\_ No. Ft. \_\_\_\_\_ Date \_\_\_\_\_

COAL WAS ENCOUNTERED AT \_\_\_\_\_ FEET \_\_\_\_\_ INCHES  
\_\_\_\_\_ FEET \_\_\_\_\_ INCHES FEET \_\_\_\_\_ INCHES  
\_\_\_\_\_ FEET \_\_\_\_\_ INCHES FEET \_\_\_\_\_ INCHES

RESULT AFTER TREATMENT \_\_\_\_\_  
ROCK PRESSURE AFTER TREATMENT \_\_\_\_\_  
Fresh Water \_\_\_\_\_ Feet Salt Water \_\_\_\_\_ Feet

Formation	Color	Hard or Soft	Top	Bottom	Oil, Gas or Water	Depth	Remarks
<u>Cow Run</u>			<u>676</u>	<u>711</u>			
<u>Total Depth</u>				<u>711</u>			



APR 6 1962

