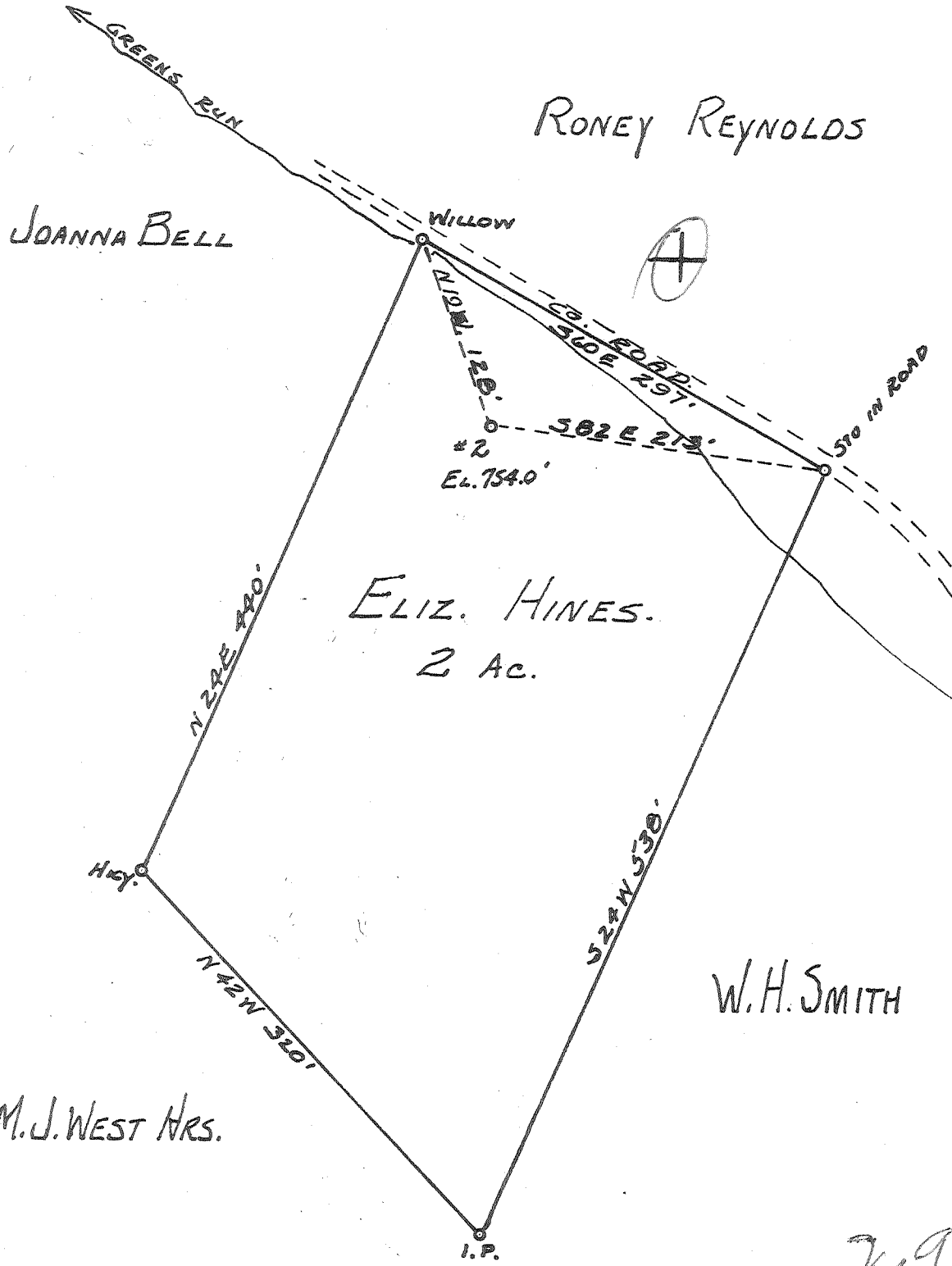


1 2 3

Latitude 39° 25'

Longitude 81° 10'



New Location   
 Drill Deeper   
 Abandonment

SEP - 4 1962

2.9 W  
 2.7 D

Company LEONARD HART  
 Address 702 30th St  
ST. MARYS, W. VA.  
 Farm ELIZABETH HINES  
 Tract \_\_\_\_\_ Acres 2 Lease No. 7  
 Well (Farm) No. 2 Serial No. \_\_\_\_\_  
 Elevation (Spirit Level) 754.0'  
 Quadrangle ST. MARYS  
 County PLEASANTS District WASHINGTON  
 Engineer JOHN W. HAMILTON  
 Engineer's Registration No. 2274  
 File No. \_\_\_\_\_ Drawing No. 245  
 Date SEPT 10, 1960 Scale 1" = 400'

STATE OF WEST VIRGINIA  
 DEPARTMENT OF MINES  
 OIL AND GAS DIVISION  
 CHARLESTON

**WELL LOCATION MAP**  
 FILE NO. PLEAS-1002-A

+ Denotes location of well on United States Topographic Maps, scale 1 to 62,500, latitude and longitude lines being represented by border lines as shown.

- Denotes one inch spaces on border line of original tracing.

ELIZABETH HINES No. 2 - LEONARD HART - PLEASANTS