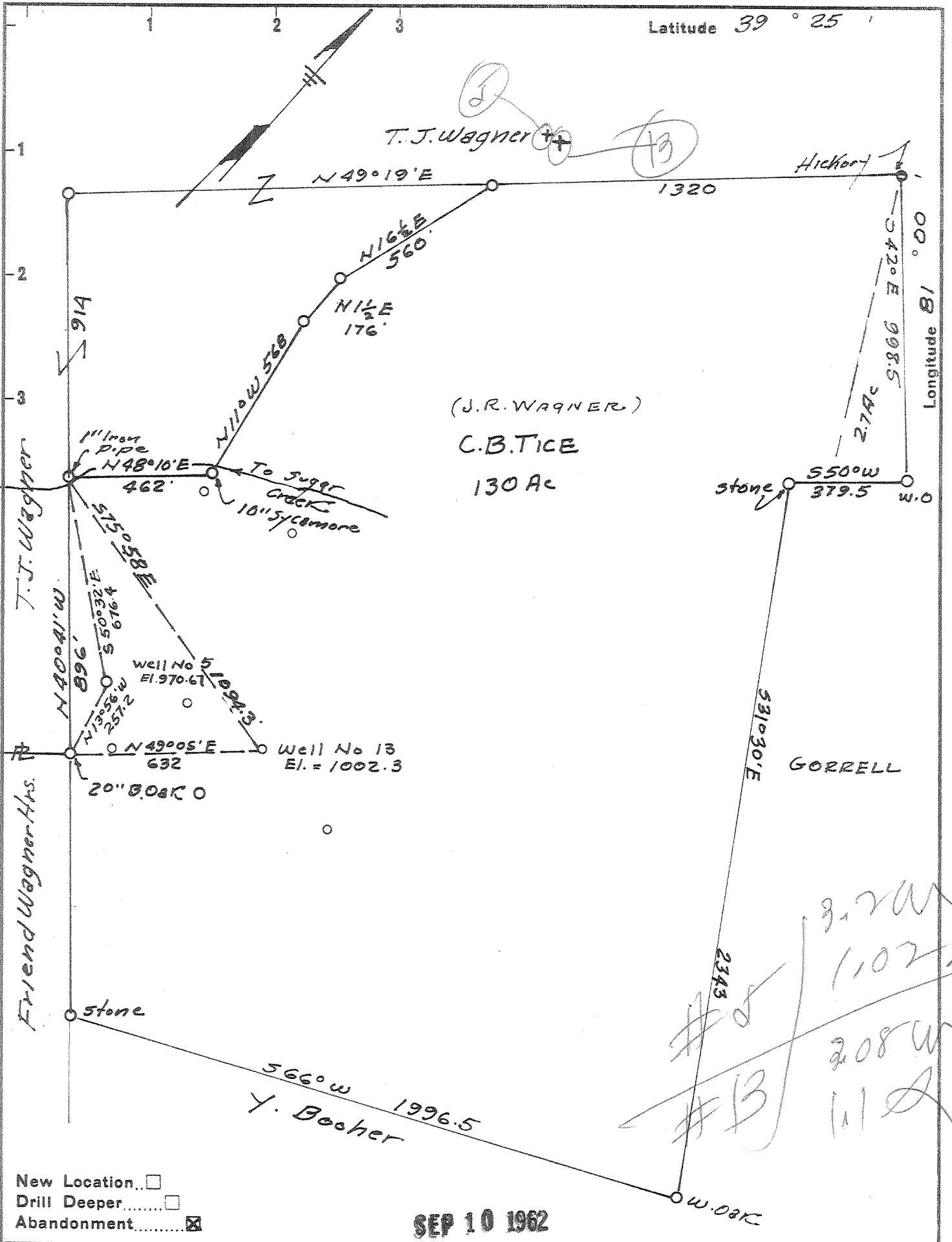


Latitude 39° 25'



- New Location...
- Drill Deeper...
- Abandonment...

SEP 10 1962

Company LEONARD HART
 Address 702-2nd St. St Marys W.Va.
 Farm C.B.TICE
 Tract _____ Acres 130 Lease No. _____
 Well (Farm) No. 5 & 13 Serial No. _____
 Elevation (Spirit Level) No 5-970.67 No 13-1002.3
 Quadrangle St Marys
 County Pleasants District UNION
 Engineer J. H. Johnston
 Engineer's Registration No. 2492
 File No. _____ Drawing No. _____
 Date Aug 23, 1962 Scale 1" = 400'

STATE OF WEST VIRGINIA
 DEPARTMENT OF MINES
 OIL AND GAS DIVISION
 CHARLESTON

WELL LOCATION MAP

FILE NO. PLEAS-1010-A-#5
PLEAS-1011-A-#13

+ Denotes location of well on United States Topographic Maps, scale 1 to 62,500, latitude and longitude lines being represented by border lines as shown.
 - Denotes one inch spaces on border line of original tracing.

156 IMPERIAL TRACING CLOTH T.M. (K. Wagner)
 C.B. TICE MS. #5 & 13 LEONARD HART PLEAS-1010-A