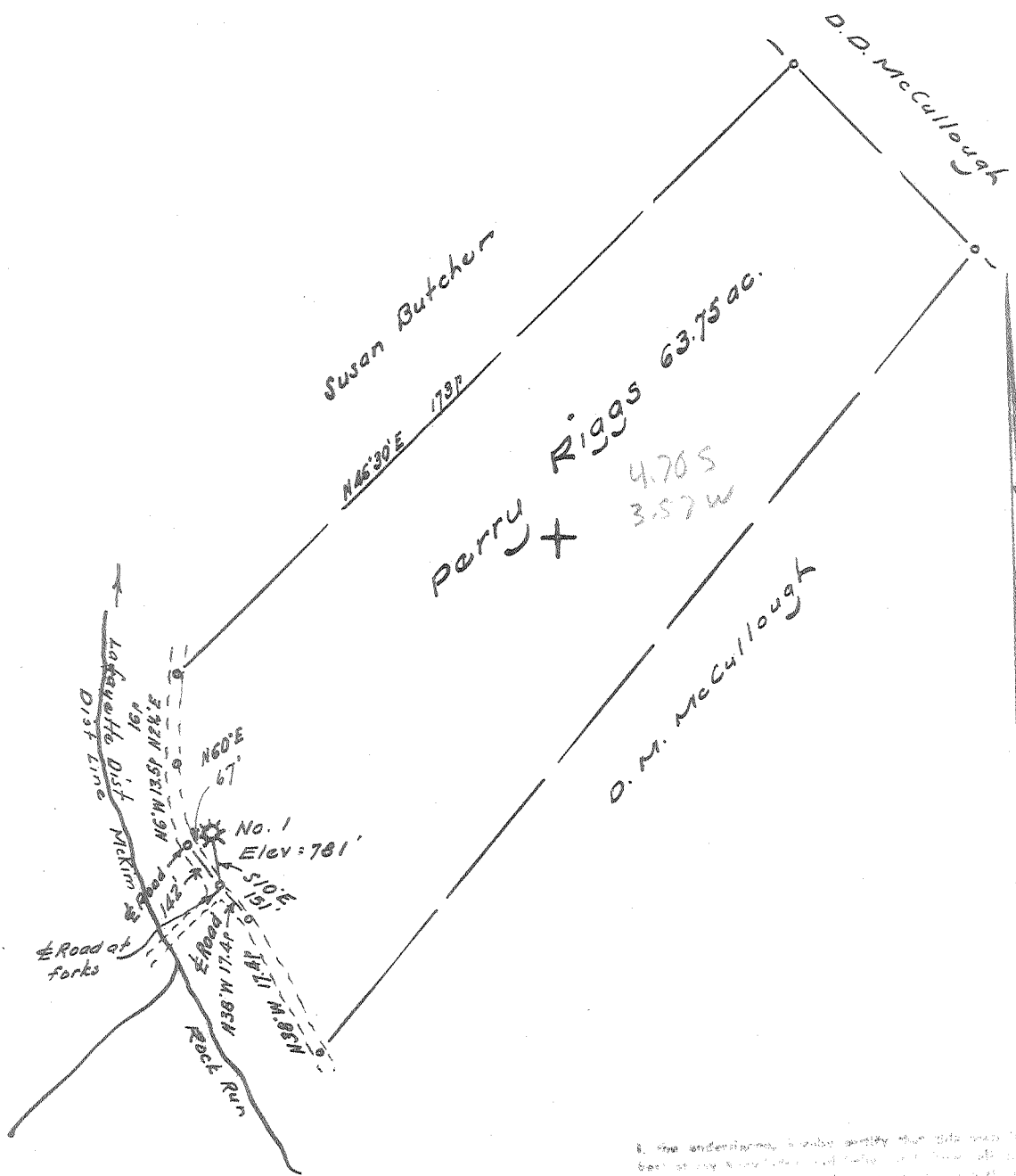


LATITUDE 39° 25'

LONGITUDE 81° 00'



I, the undersigned, hereby certify that this map is correct to the best of my knowledge and belief, and that all the information contained hereon is true and correct to the best of my knowledge and belief.

*W. H. H. H.*

New Location.....   
 Drill Deeper.....   
 Abandonment.....

Elev. at forks of road = 755'  
 Error in Closure: - Less than 1 in 200

Company Chas. L. Reed Oil Co.  
 Address Route 39, Box 54A, St. Marys, W. Va.  
 Farm Perry Riggs  
 Tract \_\_\_\_\_ Acres 63.75 Lease No. \_\_\_\_\_  
 Well (Farm) No. 001 Serial No. \_\_\_\_\_  
 Elevation (Spirit Level) 781'  
 Quadrangle St. Marys EC  
 County Pleasants District Lafayette  
 Engineer W. H. H. H.  
 Engineer's Registration No. 1227  
 File No. \_\_\_\_\_ Drawing No. \_\_\_\_\_  
 Date Sept 17, 1966 Scale 1" = 300' = 495'

STATE OF WEST VIRGINIA  
 DEPARTMENT OF MINES  
 OIL AND GAS DIVISION  
 CHARLESTON

WELL LOCATION MAP  
 FILE NO. PLEAS - 1073 A

+ Denotes location of well on United States Topographic Maps, scale 1 to 62,500, latitude and longitude lines being represented by border lines as shown.

- Denotes one inch spaces on border line of original tracing.