

LATITUDE 38° 47' 30"

11,00,56.18 LONGITUDE

7 1/2'
Approx.
Loc.

See microfilm
for Plot

7'5 OGIS topo location

7.5' loc _____ 15' loc _____
(calc.) _____

Company _____

Farm W S Roberts 136

Elevation 977.96

Quad W S

County _____

District Curtis

Well record on microfilm
ID# 2577

WELL LOCATION MAP

File No. 87-30079

NO LOCATION
found

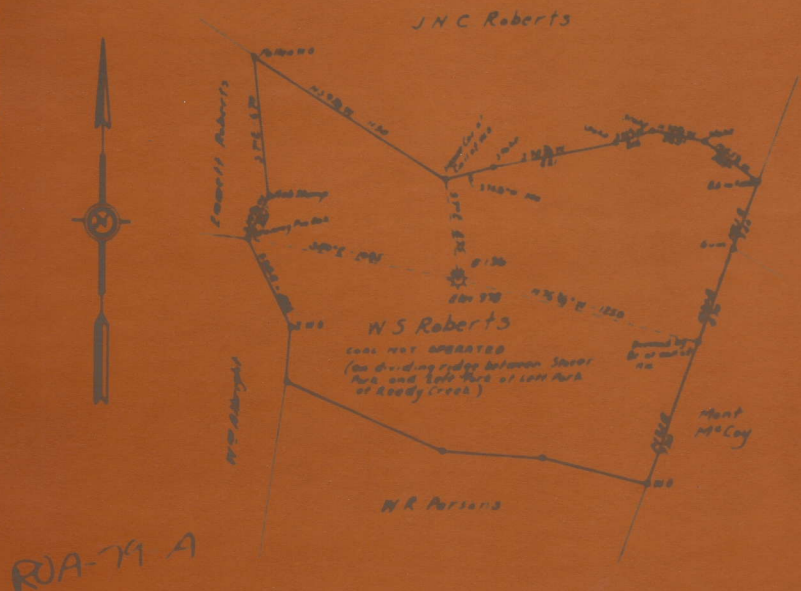
WAS: 087-70004

I, the undersigned, hereby certify that this map is correct and shows all the information to the best of my knowledge and belief, required by the Oil and Gas Section of the Mining Laws of West Virginia.

G. Abner Ingram
Engineer

Acknowledged before me, a Notary Public of Kanawha County, W. Va.
this 21 day of December 1933.

My Commission expires May 2, 1940 J. J. Martin



ROA-79 A

W.S. Roberts
Well No. 136
Curtis District
Roane County, W. Va.
Dec. 20, 1933

UNITED FUEL GAS CO.
MAP SHOWING
WELL TO BE ABANDONED
SCALE: 1 INCH = 660 FEET

NO. 087-30079

70004

Curtis District, Roane County, W. Va.
 By United Fuel Gas Co., Charleston, W. Va.
 On 65 acres, surface and mineral rights owned by W. S. Roberts,
 R. F. D. No. 1, Box 66, Spencer, W. Va.
 Drilled previous to June 30, 1929.
 Sea Elevation ~~given~~. 977.9' L.
 13" conductor, 16"; 6-5/8" casing, 2160'.
 Larkin packer, ... " x 6-5/8 x 20, set at 2500'. (No. sign).
 No coal was encountered.
 Abandonment reported to Dept. of Mines Dec. 19, 1933.
 Well was shot at 2564'.
 Salt water at 1735'.
 Producing hole.

Maybe
 Jackson Co?
 NO LOCATION
 FOUND

	Top.	Bottom.	Thickness.
Lime and red rock		475	
Sand	475 -	560	85
Lime and red rock	560 -	770	210
Cave and lime	770 -	870	100
Horseneck Sand	870 -	910	40
Lime and red rock	910 -	1104	194
Cow Run Sand	1104 -	1140	36
Slate	1140 -	1180	40
Gas Sand	1180 -	1240	60
2nd Cow Run Sand	1280 -	1360	80
Slate	5
Sand and lime	1440 -	1550	110
Black shale	1550 -	1600	50
Sand	1600 -	1650	50
Black shale	1650 -	1735	85
Salt Sand	1735 -	2100	365
Slate	2100 -	2105	5
Little Lime	2105 -	2120	15
Big Lime	2120 -	2135	15
Slate	2135 -	2141	6
Big Injun Sand	2141 -	2160	19
Slate	2160 -	2235	75
Sand	2235 -	2260	25
Slate	2260 -	2356	96
Lime shell	2356 -	2515	159
Berea Grit, to bottom	2561 -	2577	16