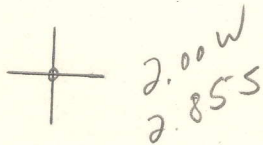


LATITUDE 38° 50' 00"

LONGITUDE 81° 22' 30"



7'5 OGIS topo location

7.5' loc _____ 15' loc _____
 _____ (calc.) _____

Company _____

Farm _____

Quad Peniel 7 1/2

County Roane

District Curtis

WELL LOCATION MAP

File No. 087-81A

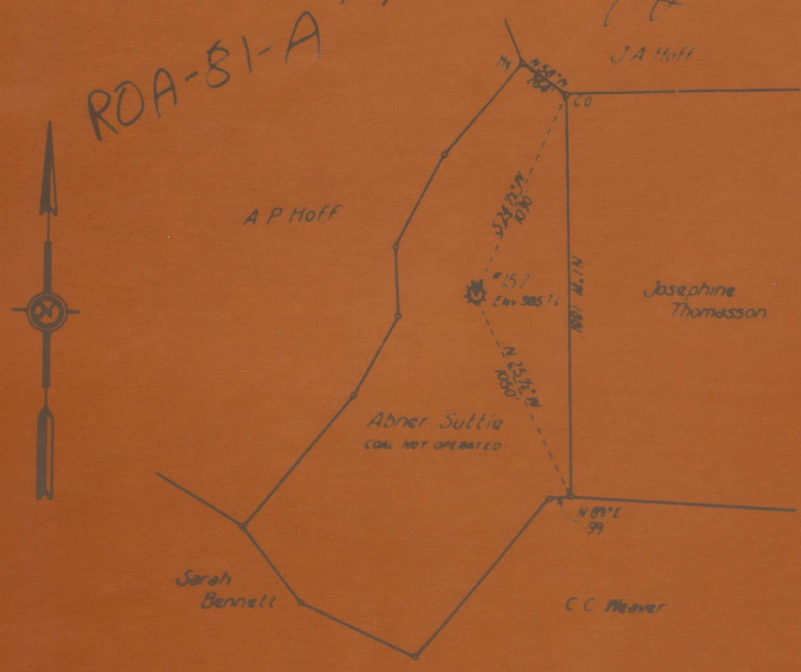
I, the undersigned, hereby certify that this map is correct and shows all the information to the best of my knowledge and belief, required by the Oil and Gas Section of the Mine Laws of West Virginia.

L. A. Cunningham
Engineer

Acknowledged before me, a Notary Public of Kanawha County, W. Va.

this 25th day of January 1934.

My Commission expires May 2, 1940 J. J. Martin



Abner Suttie
Well No. 157
Curtis District
Roane County, W. Va.
Jan. 23, 1934.

UNITED FUEL GAS CO.
MAP SHOWING
WELL TO BE ABANDONED
SCALE :- 1 INCH = 660 FEET

108 - 7 1/2

81A

Curtis District, Roane County, W. Va.

By United Fuel Gas Co., Charleston, W. Va.

On 55 acres, surface and mineral rights owned by M. E. Suttle,
Spencer, W. Va.

Well was completed August 2, 1910.

Elevation, 985.7' L.

13" conductor, 16'; 10" casing, 850' + ~~10'~~ (pulled); 8½", 1213'
(pulled); 6-5/8", 2165'.

No coal was encountered.

Abandonment reported to Dept. of Mines Jan. 24, 1934.

Well was shot at 2586-2596'.

Fresh water at 630, 765, and 1190'; salt water at 1800 and 1870'.

Gas well.

	Top.	Bottom.	Thickness.
Red rock and shells	0	- 600	600
Pittsburgh Sand (water, 630')	600	- 705	105
Slate and shells	705	- 750	45
Sand and lime shells (water, 765')	750	- 815	65
Red rock	815	- 1055	240
Sand	1055	- 1085	30
Red rock	1085	- 1105	20
Big Dunkard Sand (water, 1190')	1105	- 1240	135
Sand and slate	1240	- 1780	540
Salt Sand (water, 1800 and 1870')	1780	- 2055	275
Big Lime (oil, 2100') (water, 2135')	2055	- 2150	95
Big Injun Sand	2150	- 2180	30
Slate and shells	2180	- 2580	400
Berea Grit (gas, 2586-2592')	2580	- 2598	18
Slate, to bottom	2598	- 2664	66

M. E. (A. B.) SUTTLE NO. 1 (157) WELL.

Curtis District, Roane County, W. Va.

By United Fuel Gas Co.

On 55 acres.

Keller Map H-23.

Elevation, 985.7' L.

Completed Aug. 2, 1910.

Abandoned Jan. 24, 1934.

Gas well.

Abandonment notice lists farm as A. B. Suttle, with surface owned by
M. E. Suttle.

From Heck's notes.

ROA-81A

	Top.	Bottom.
Salt Sand (salt water, 1800 and 1870')	1780	- 2055
Big Lime (oil, 2100') (water, 2135')	2055	- 2150
Big Injun Sand	2150	- 2180
Slate and shells	2180	- 2580
Berea Sand (gas, 2586-92')	2580	- 2598