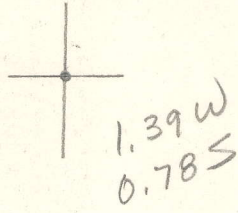


LATITUDE 38°50'00"



81° 17' 30" LONGITUDE

7'5 OGIS topo location

7.5' loc \_\_\_\_\_ 15' loc \_\_\_\_\_  
 \_\_\_\_\_ (calc.) \_\_\_\_\_

Company \_\_\_\_\_

Farm \_\_\_\_\_

Quad Spencer 7 1/2'

County Roane

District Spencer

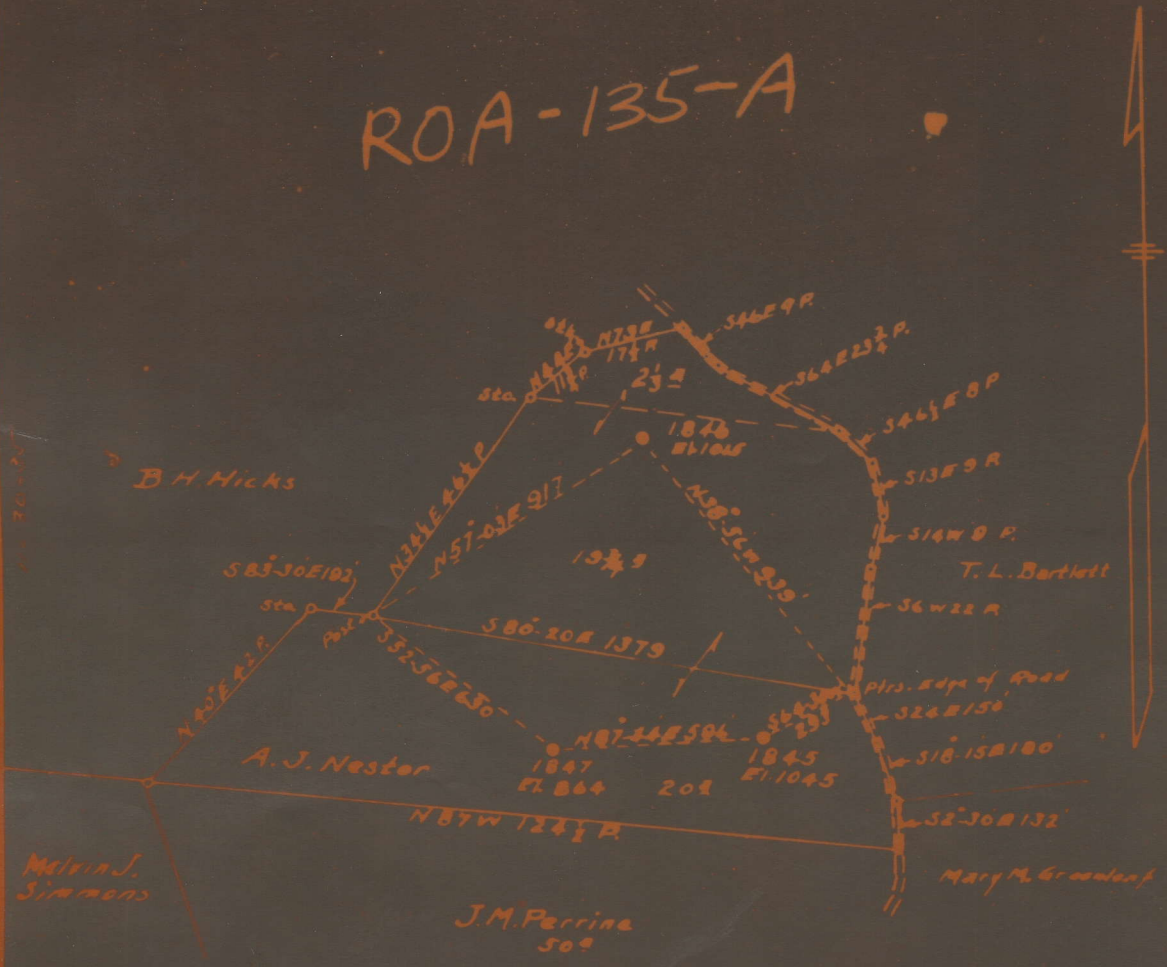
WELL LOCATION MAP

File No. 087-1354

Plot of WELLS NO. 1845-1846-A-1847  
 HOPE CONSTRUCTION & REFINING CO.  
 A. J. NESTOR  
 SPENCER

of the  
 Clarksburg, W. Va. on the  
 Farm consisting of 42 Acres  
 District ROANE  
 County W. Va.

ROA-135-A



LEGEND  
 ○ Location  
 ● Oil Well  
 ⊙ Abund  
 ⊗ Gas Well  
 ⊙ Abund  
 ⊕ Dry Hole  
 Field Book N. 607-P. 16  
 23  
 Scale 1" = 400'  
 #1847. Nov. 28<sup>th</sup> 1935



NESTOR, A. J., NO. 1847.

Roa-135-A.

By Hope Construction & Refining Co.

Spencer Dist.

See microfilm for Plat

( NO LOCATION  
FOUND )

Well record on microfilm

Elev. 864 (see plat)