

38° 35'

Latitude

← 7 1/2 100

81° 07' 30"

Longitude

Topo Location

7.5' Loc. 0.055 15' Loc. 0.05 S  
1.09 W (calc.) 3.34 W

Company \_\_\_\_\_

Farm O O Stockley 1888

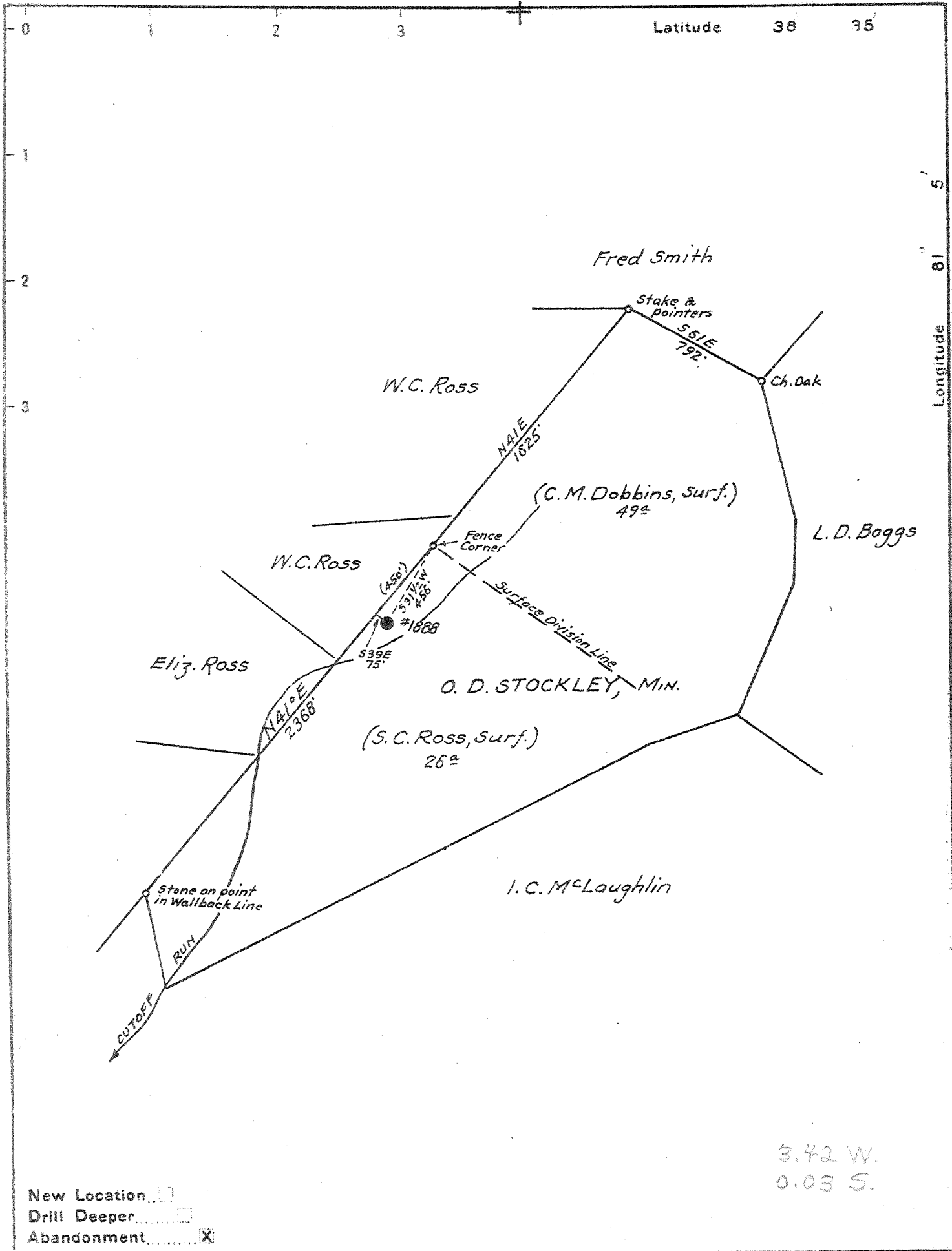
15' Quad Otter  
(sec.) \_\_\_\_\_

7.5' Quad Newton

District \_\_\_\_\_

WELL LOCATION PLAT

County 87 Permit 30270



Company VIRGINIAN GASOLINE & OIL CO.  
 Address CHARLESTON, W.VA.  
 Farm O. D. STOCKLEY  
 Tract \_\_\_\_\_ Acres 4000 Lease No. 5708  
 Well (Farm) No. \_\_\_\_\_ Serial No. 1888  
 Elevation (BAROMETER) 828  
 Quadrangle OTTER  
 County ROANE District GEARY  
 Engineer \_\_\_\_\_  
 Engineer's Registration No. 6FJ  
 File No. 88-75 Drawing No. \_\_\_\_\_  
 Date JUNE 21, 1940 Scale 1" = 660'

STATE OF WEST VIRGINIA  
 DEPARTMENT OF MINES  
 OIL AND GAS DIVISION  
 CHARLESTON

**WELL LOCATION MAP**  
 FILE NO. ROA-270A

well record on microfilm

+ Denotes location of well on United States Topographic Maps, scale 1 to 62,500, latitude and longitude lines being represented by border lines as shown.

- Denotes one inch spaces on border line of original tracing.