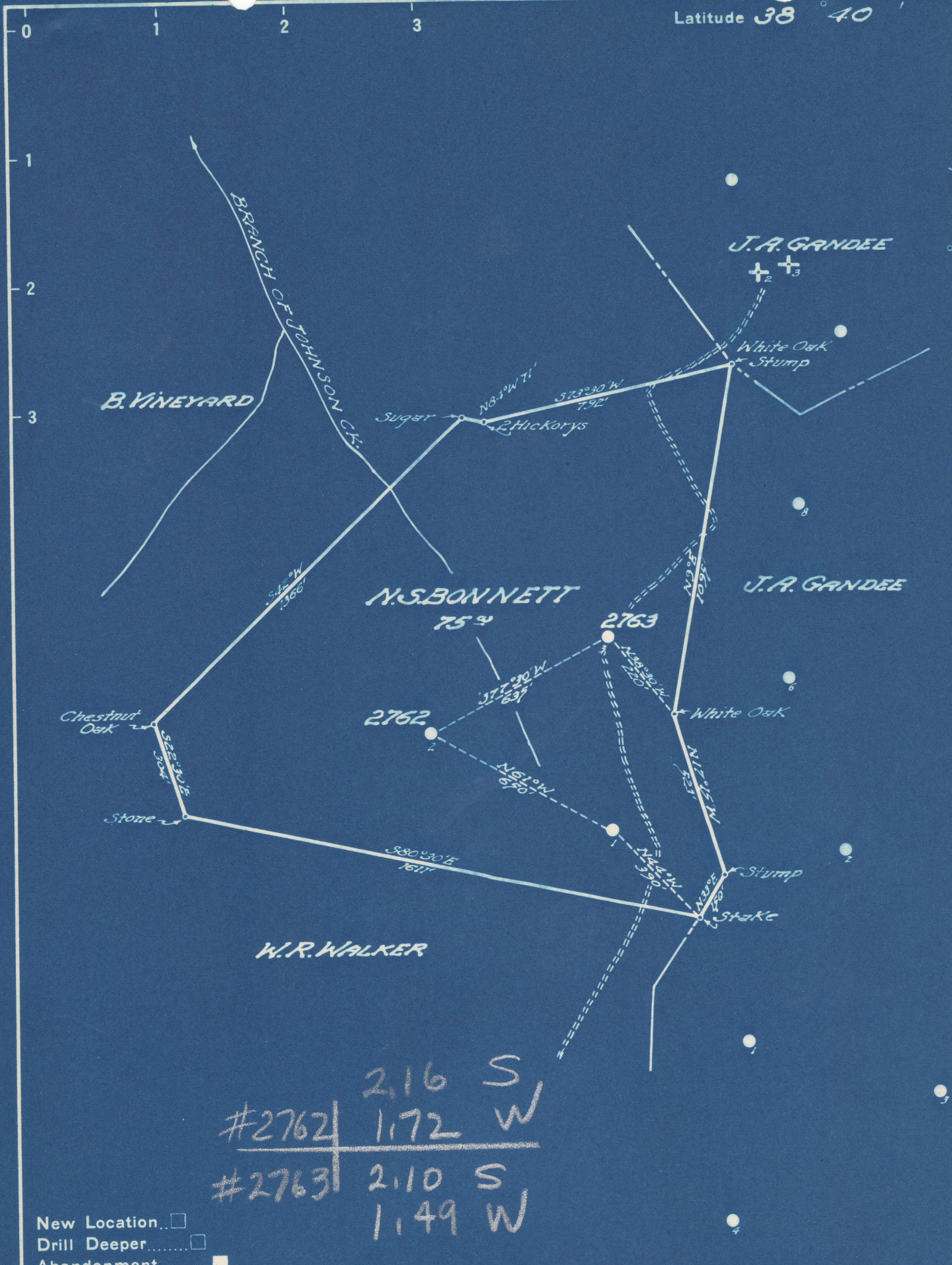


Latitude 38 40

Longitude 81 20



	2.16	S
#2762	1.72	W
<hr/>		
#2763	2.10	S
	1.49	W

- New Location...
- Drill Deeper...
- Abandonment...

Company UNITED FUEL GAS CO.
 Address CHARLESTON, WVA.
 Farm N.S. BONNETT
 Tract _____ Acres 75 Lease No. 1914
 Well (Farm) No. 2,3 Serial No. 2762
 Elevation (Spirit Level) 2-932, 3-950
 Quadrangle WALTON
 County ROANE District WALTON
 Engineer W.H. Moore
 Engineer's Registration No. 662
 File No. 76-79 Drawing No. _____
 Date 3-5-49 Scale 1" = 400'

STATE OF WEST VIRGINIA
 DEPARTMENT OF MINES
 OIL AND GAS DIVISION
 CHARLESTON

WELL LOCATION MAP
 FILE NO. ROA-612-A-#2762
ROA-613-A-#2763

+ Denotes location of well on United States Topographic Maps, scale 1 to 62,500, latitude and longitude lines being represented by border lines as shown.

- Denotes one inch spaces on border line of original tracing.

Walton District, Roane County, W. Va.

By The Ohio Fuel Oil Co.

Rig commenced Aug. 7, 1910, and completed Aug. 16, 1910.

Drilling commenced Sept. 14, 1910, and completed Oct. 24, 1910.

Contractor, Pratt Drilling Co., Charleston, W. Va.

Drillers: C. A. Dawson and C. T. Devore.

Conductor, 16'. (6-5/8" threads, 15' 6")

Well shot Oct. 21, 1910, with 40 qts.

1st day's production, 18 bbls.

Examined and approved by E. H. Lange, Foreman.

Record copied from Record Books of The Ohio Fuel Oil Co.,

by C. E. Krebs Nov. 11, 1911.

	Top.	Bottom.	Thickness.
Conductor	0	- 16	16
Red rock	16	- 135	119
Slate	135	- 215	80
Lime	215	- 280	65
Sand	280	- 300	20
White lime	300	- 332	32
Sand	332	- 340	8
White slate	340	- 400	60
Sand	400	- 640	240
Slate	640	- 660	20
Sand	660	- 700	40
Slate	700	- 712	12
Big Dunkard Sand	712	- 800	88
Slate	800	- 885	85
Sand	885	- 932	47
Black slate	932	- 970	38
Sand	970	- 995	25
Slate	995	- 1040	45
Sand	1040	- 1100	60
Slate	1100	- 1170	70
Sand	1170	- 1235	65
Slate shell	1235	- 1290	55
Salt Sand (big water, 1515')	1290	- 1480	190
Little Lime	1823		
Sand	1845		
Pencil Cave	1850		
Big Lime	1859		
Big Injun Sand (pay, 1995')	1985	- 2022	37
Total depth		2022	

6-6 (196)