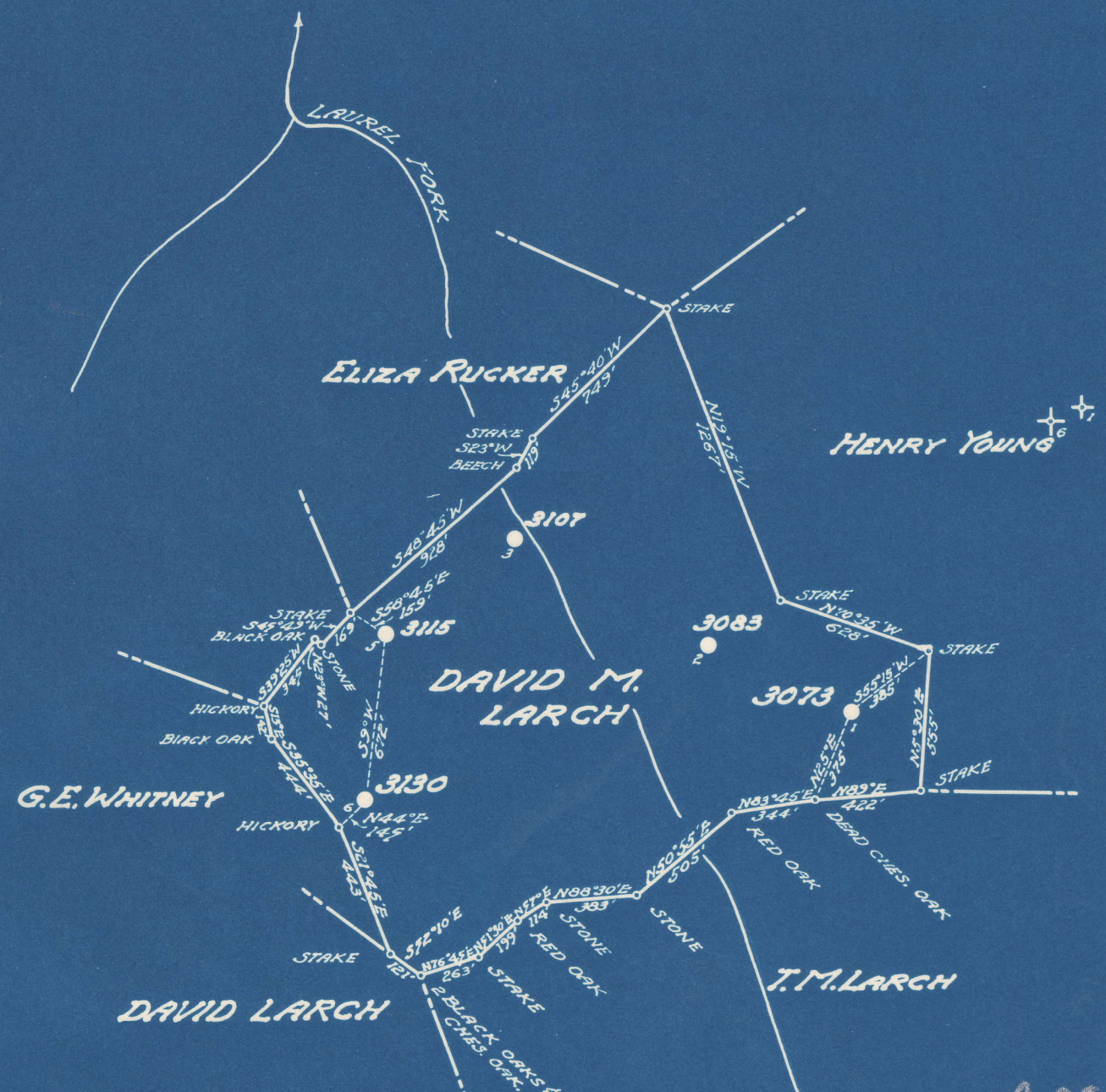


Latitude 38° 40'

Longitude 81° 25'



4,00 S  
 (6) #3130 | 0.92 W  
 (1) #3073 | 3.91 S  
 0.72 W

New Location   
 Drill Deeper   
 Abandonment

Company UNITED FUEL GAS CO.  
 Address CHARLESTON, W.VA.  
 Farm DAVID M. LARCH  
 Tract \_\_\_\_\_ Acres 70 Lease No. 1936  
 Well (Farm) No. 1,6 Serial No. 3130  
 Elevation (Spirit Level) 1,939 - 6,354  
 Quadrangle WALTON  
 County ROANE District WALTON  
 Engineer [Signature]  
 Engineer's Registration No. 662  
 File No. 72-77 Drawing No. \_\_\_\_\_  
 Date 3-14-49 Scale 1" = 660'

STATE OF WEST VIRGINIA  
 DEPARTMENT OF MINES  
 OIL AND GAS DIVISION  
 CHARLESTON

*See microfilm for Well Records*

**WELL LOCATION MAP**

FILE NO. ROA-640-A-#3130  
ROA-641-A-#3073

+ Denotes location of well on United States Topographic Maps, scale 1 to 62,500, latitude and longitude lines being represented by border lines as shown.

- Denotes one inch spaces on border line of original tracing.

(196)



O+G Div. An Rpt, 1949, tabe 6

Roane 640A comp 1914 oil well to 2080'  
 641A comp 1913 oil well to 2041'



STATE OF WEST VIRGINIA  
 DEPARTMENT OF MINES  
 OIL AND GAS DIVISION  
 CHARLESTON

WELL LOCATION MAP  
 FILE NO. ROA 640A-4813  
 ROA 641A-2073  
 4 Denotes location of well on United States  
 Topographic Maps, scale 1 to 62,500, lat-  
 itude and longitude lines being represented  
 by border lines as shown.  
 - Denotes one inch spaces on corner line  
 of original tracing.

Company UNITED FUEL GAS CO  
 Address CHARLESTON, W. VA.  
 Farm DAVID M. LARCH  
 Tract Adams 20 Lease No. 1836  
 Well Farm No. 16 Serial No. 3073  
 Elevation (Spot Level) 1933 - 6234  
 Questionnaire WILTON  
 County ROANE District WILTON  
 Engineer  
 Engineer's Registration No. 685  
 File No. 22-77 Drawing No.  
 D. 3-14-23 2-in 1" = 60'