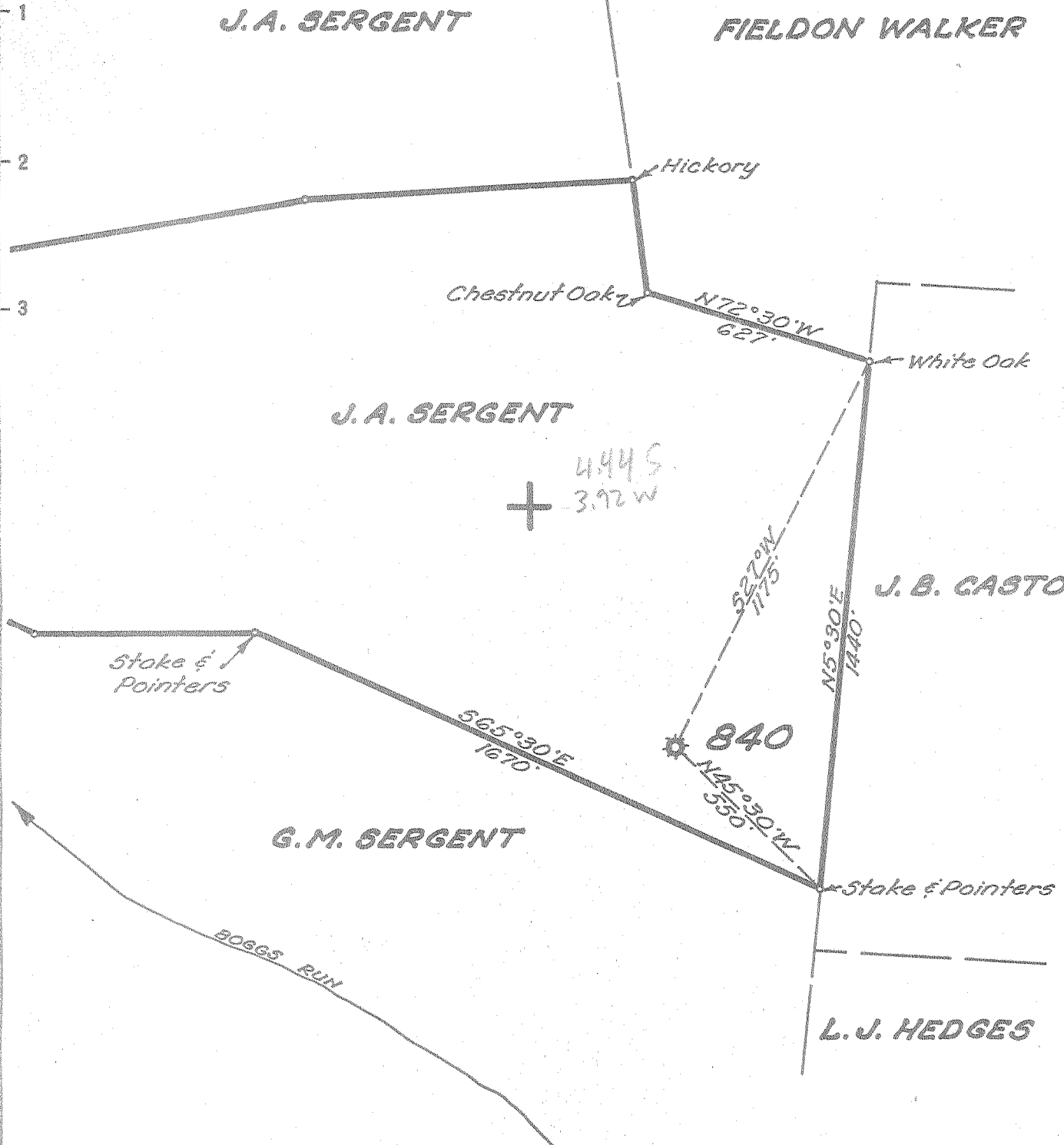


Latitude $38^{\circ} 55'$

Longitude $81^{\circ} 15'$



New Location
 Drill Deeper
 Abandonment

Company UNITED FUEL GAS CO.
 Address CHARLESTON, W. VA.
 Farm J.A. SERGENT
 Tract _____ Acres 128 1/2 Lease No. 13954
 Well (Farm) No. _____ Serial No. 840
 Elevation (Spirit Level) 1065.3'
 Quadrangle SPENCER
 County ROANE District SPENCER
 Engineer Robert R. Ferrell
 Engineer's Registration No. 2529
 File No. 78-93 Drawing No. _____
 Date 6-25-54 Scale 1"=400'

STATE OF WEST VIRGINIA
 DEPARTMENT OF MINES
 OIL AND GAS DIVISION
 CHARLESTON

see microfilm for well record
WELL LOCATION MAP
 FILE NO. ROA-841-A

+ Denotes location of well on United States Topographic Maps, scale 1 to 62,500, latitude and longitude lines being represented by border lines as shown.
 - Denotes one inch spaces on border line of original tracing.

(840)
J. A. SARGENT NO. 1/WELL.

Spencer District, Roane County, W. Va.
By United Fuel Gas Co.
On 257 $\frac{1}{4}$ acres.
Keller Map I-22.
Elevation.....
Completed Jan. 25, 1917.
Gas well. 23/10 Merc. in 6 $\frac{5}{8}$ ".
S. P. - S-40-41 - W-40.
From Heck's notes.

70246
now 30841

8541 mcf

	Top.	Bottom.
Big Lime	2056	-
Berea Sand	2596	- 2626
Total depth		2626

J. A. SARGENT NO. 2 (910) WELL.

Spencer District, Roane County, W. Va.
By United Fuel Gas Co.
On 257 $\frac{1}{4}$ acres.
Keller Map I-22.
Elevation.....
Completed May 30, 1917.
Gas well. 3,000,000 cu. ft. Berea Sand.
From Heck's notes.
No depths given.

70247
now 30913