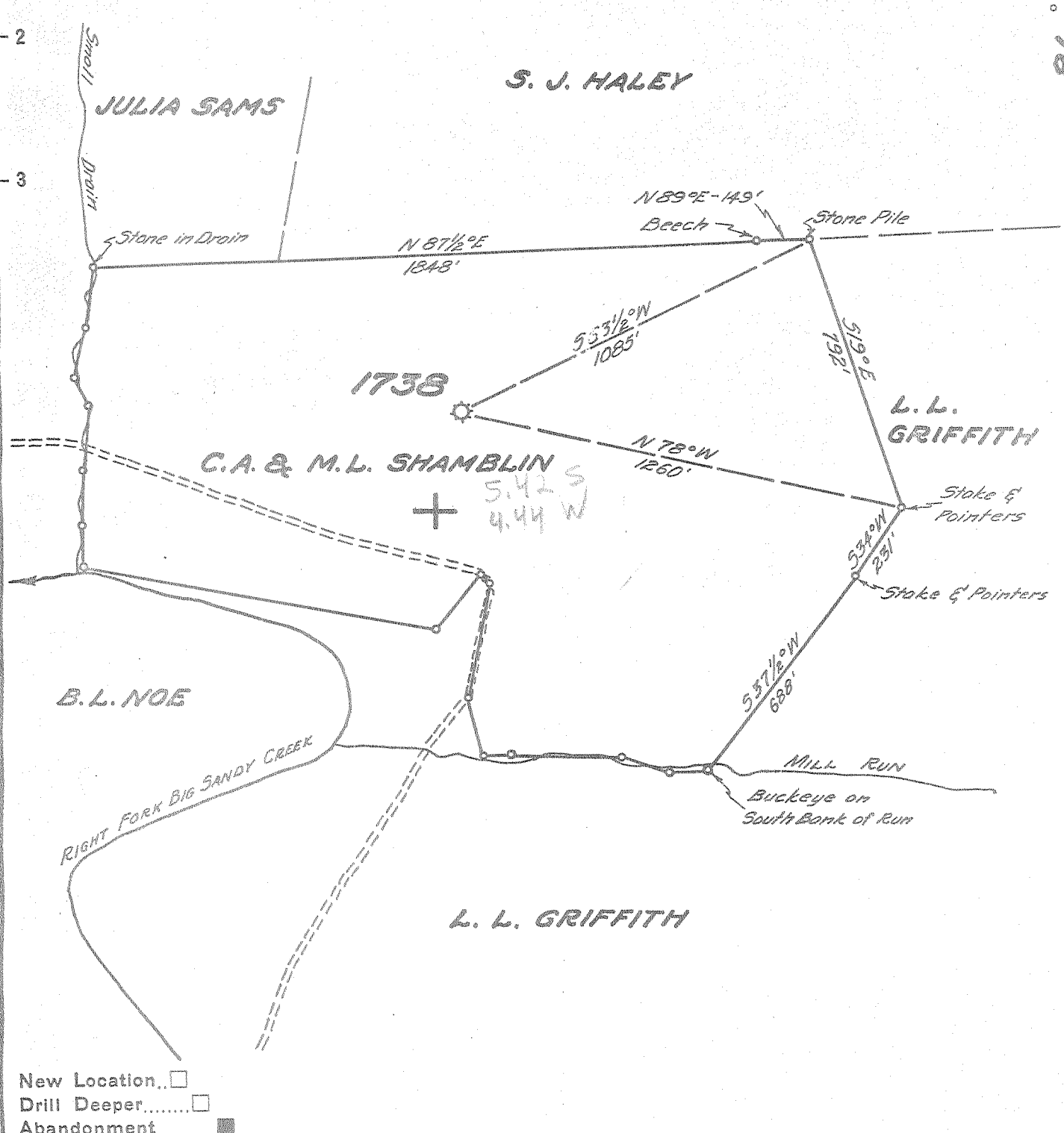


Latitude 38° 40'

Longitude 81° 05'



New Location
 Drill Deeper
 Abandonment

Company	UNITED FUEL GAS CO.
Address	CHARLESTON, W. VA.
Farm	C.A. & M.L. SHAMBLIN
Tract	Acres 57 Lease No. 15547
Well (Farm) No.	Serial No. 1738
Elevation (Spirit Level)	905.0
Quadrangle	OTTER
County	ROANE District GEARY
Engineer	Seybert R. Ferrell
Engineer's Registration No.	2529
File No.	86-75 Drawing No.
Date	7-27-54 Scale 1" = 400'

STATE OF WEST VIRGINIA
 DEPARTMENT OF MINES
 OIL AND GAS DIVISION
 CHARLESTON
see microfiche for well record
WELL LOCATION MAP
 FILE NO. ROA-865-A

+ Denotes location of well on United States Topographic Maps, scale 1 to 62,500, latitude and longitude lines being represented by border lines as shown.
 - Denotes one inch spaces on border line of original tracing.