

Latitude 39° 45'

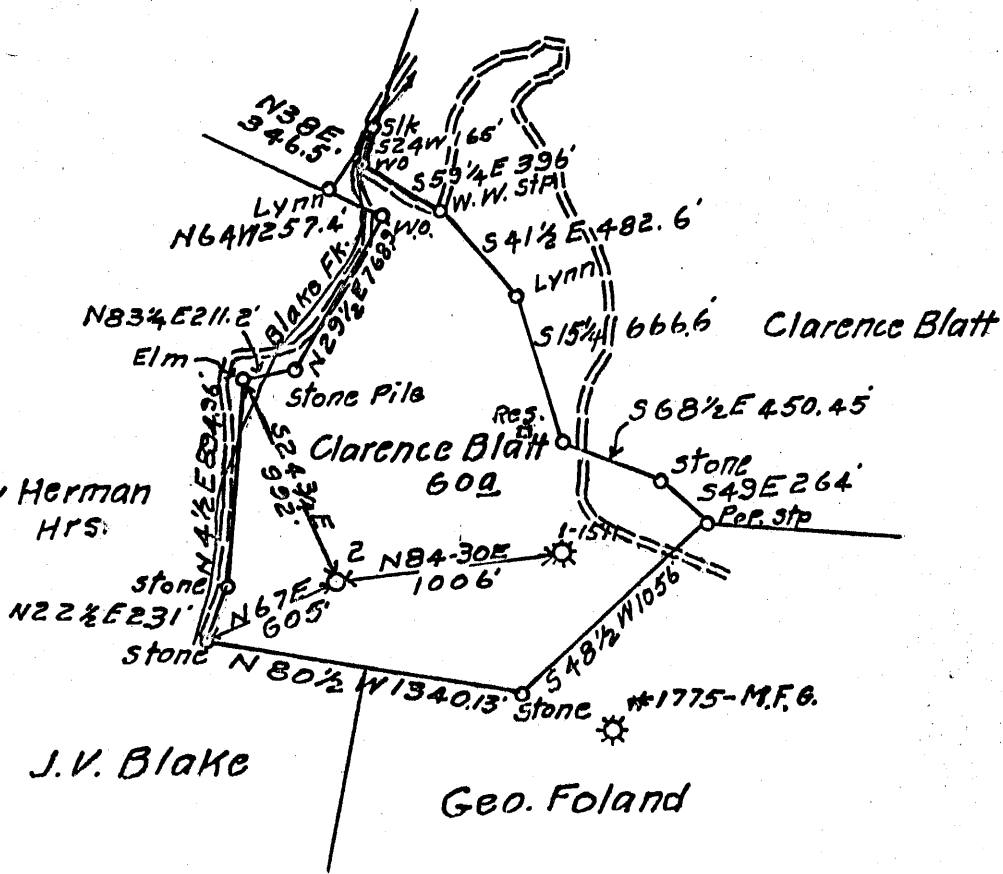
Longitude 80° 40'

0 1 2 3

1

2

3



2.995  
1.10W

Abandonment.....  issued 4-12-71

NOW - MANUFACTURERS LIGHT & HEAT CO.

Company The Manufacturers Light & Heat Co.  
Carnegie Natural Gas Co  
 Box 1196  
 Address Pittsburgh, Pa. 15230  
 Farm Clarence Blatt  
 Tract Two Acres 60 Lease No. 1775-17  
 Well (Farm) No. Two Serial No. 1526  
 Elevation (Spirit Level) 1139 Feet  
 Quadrangle Littleton N.W. #  
 County Wetzel District Proctor  
 Engineer C.D. Nutter  
 Engineer's Registration No. \_\_\_\_\_  
 File No. \_\_\_\_\_ Drawing No. \_\_\_\_\_  
 Date 2-27-37 Scale 1" = 800 feet

STATE OF WEST VIRGINIA  
 DEPARTMENT OF MINES  
 OIL AND GAS DIVISION  
 CHARLESTON

WELL LOCATION MAP

FILE NO. WET-15A-Redrill  
Storage-P

+ Denotes location of well on United States Topographic Maps, scale 1 to 62,500, latitude and longitude lines being represented by border lines as shown.

- Denotes one inch spaces on border line of original tracing.





STATE OF WEST VIRGINIA  
DEPARTMENT OF MINES  
OIL AND GAS DIVISION

Quadrangle Littleton

WELL RECORD

Storage

Permit No. WET-154

Oil or Gas Well Gas  
(KIND)

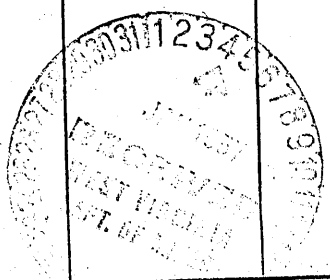
Company THE MANUFACTURERS LIGHT AND HEAT COMPANY  
Address 800 UNION TRUST BUILDING., PGH., PA.  
Farm C. Blatt Acres 60  
Location (waters) \_\_\_\_\_  
Well No. 4434 (F-14080) Elev. 1139  
District Proctor County Wetzel  
The surface of tract is owned in fee by \_\_\_\_\_  
Address \_\_\_\_\_  
Mineral rights are owned by \_\_\_\_\_  
Address \_\_\_\_\_  
Drilling commenced September 2, 1954  
Drilling completed November 15, 1954  
Date Shot \_\_\_\_\_ From \_\_\_\_\_ To \_\_\_\_\_  
With \_\_\_\_\_

Casing and Tubing	Used in Drilling	Left in Well	Packers
Size			Kind of Packer
16			
13			
10	<u>246'0"</u>	<u>246'0"</u>	Size of
8 1/2		<u>1315'0"</u>	
6 1/2			Depth set
5 3/16		<u>2008'0"</u>	
3			Perf. top
2			Perf. bottom
Liners Used			Perf. top
			Perf. bottom

Open Flow 0 /10ths Water in 3/8 Inch  
\_\_\_\_\_ /10ths Merc. in \_\_\_\_\_ Inch  
Volume 0.000 Cu. Ft.  
Rock Pressure \_\_\_\_\_ lbs. \_\_\_\_\_ hrs.  
Oil \_\_\_\_\_ bbls., 1st 24 hrs.  
Fresh water \_\_\_\_\_ feet \_\_\_\_\_ feet  
Salt water \_\_\_\_\_ feet \_\_\_\_\_ feet

CASING CEMENTED \_\_\_\_\_ SIZE \_\_\_\_\_ No. Ft. \_\_\_\_\_ Date \_\_\_\_\_  
COAL WAS ENCOUNTERED AT \_\_\_\_\_ FEET \_\_\_\_\_ INCHES  
\_\_\_\_\_ FEET \_\_\_\_\_ INCHES FEET \_\_\_\_\_ INCHES  
\_\_\_\_\_ FEET \_\_\_\_\_ INCHES FEET \_\_\_\_\_ INCHES

Formation	Color	Hard or Soft	Top	Bottom	Oil, Gas or Water	Depth Found	Remarks
Clg. out to				2218	Schlumberger measurement		
Clay & Stone			2218	2130			
Set lead plugg				2130			
Cement			2130	2050			
Cement & Stone			2050	2016			
Set lead plug			2016				
Total Depth				2016			
Reconditioned for storage on Work Order No. <u>1451-L-731-4</u>							



WEST VIRGINIA DEPARTMENT OF MINES  
OIL AND GAS DIVISION

523 ✓

WELL RECORD

Permit No. Wet-154

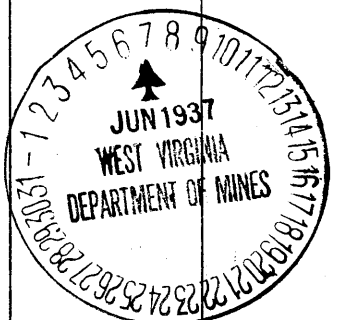
Oil or Gas Well GAS  
(Kind)

Company Carnegie Natural Gas Company  
 Address Pittsburgh, Pennsylvania.  
 Farm Clarence Blatt Acres 60  
 Location (waters) Steener Fork Fish Creek  
 Well No. 2-1521 Elev. 1139  
 District Proctor County Wetzel  
 The surface of tract is owned in fee by Clarence, Ambrose, & Foster Blatt, Address West, W. Va.  
 Mineral rights are owned by Clarence, Ambrose, & Foster Blatt, Address West, W. Va.  
 Drilling commenced April 3, 1937.  
 Drilling completed May 21, 1937.  
 Date shot 5/28/37 Depth of shot 2160'-2181'  
 Open Flow 4/10ths Water in 1" Inch  
 /10ths Merc. in          Inch  
 Volume          Cu. Ft.  
 Rock Pressure          lbs.          hrs.  
 Oil          bbls., 1st 24 hrs.  
 Fresh water 985 feet          feet  
 Salt water          feet          feet

Casing and Tubing	Used in Drilling	Left in Well	Packers
Size			
16			Kind of Packer
13			
10	<u>284</u>	<u>241</u>	Size of
8 1/4	<u>1633</u>	<u>1312</u>	
6 5/8	<u>2126</u>	<u>1964</u>	Depth set
5 3/16			
3			Perf. top
2			Perf. bottom
Liners Used	<u>None</u>		Perf. top
			Perf. bottom

CASING CEMENTED          SIZE          No. FT.          Date           
 COAL WAS ENCOUNTERED AT 887 FEET          INCHES  
985 FEET          INCHES FEET          INCHES  
         FEET          INCHES FEET          INCHES

Formation	Color	Hard or Soft	Top	Bottom	Oil Gas or Water	Depth Found	Remarks
Clay	Yellow	Soft	0	8			
Sand	White	Soft	8	18			
Slate	White	Soft	18	40			
Lime	White	Medium	40	65			
Slate	Dark	Soft	65	90			
Sand	White	Soft	90	98	Water	90'-98'	1 Bailer per Hr.
Mud	Blue	Soft	98	130			
Rock	Red	Soft	130	152			
Mud	Blue	Soft	152	170	Water	160'	3 Bailers.
Lime	White	Hard	170	180			
Rock	Red	Soft	180	260			
Slate	White	Soft	260	280			
Lime	White	Hard	280	292			
Slate	White	Soft	292	350			
Rock	Red	Soft	350	395			
Lime	White	Hard	395	405			
Slate	Dark	Soft	405	490			
Rock	Red	Soft	490	510			
Slate	Dark	Soft	510	540			
Coal	Black	Soft	540	543			
Lime	White	Hard	543	570			
Slate	White	Soft	570	610			
Lime	White	Hard	610	620			
Slate	Dark	Soft	620	635			
Sand	White	Soft	635	640			
Slate	White	Soft	640	656			
Lime	White	Hard	656	690			
Rock	Red	Soft	690	715			
Slate	White	soft	715	730			
Sand	White	Soft	730	740			
Slate	White	Soft	740	754			
Lime	White	Hard	754	887			
Coal	Black	Soft	887	890			
Lime	White	Hard	890	960			Mapletown
Slate	White	Soft	960	985			
Coal	Black	Soft	985	991	Water	985	Pittsburgh Coal. 3 Bailer per Hr.
Slate	White	Soft	991	1000			
Lime	White	Hard	1000	1025			
Slate	White	Soft	1025	1065			
Sand	White	Medium	1065	1085			
Slate	White	Soft	1085	1100			
Rock	Red	Soft	1100	1140			



Formation	Color	Hard or Soft	Top	Bottom	Oil, Gas or Water	Depth Found	Remarks
Lime	White	Hard	1140	1180			
Slate	White	Soft	1180	1220			
Slate	Dark	Soft	1220	1270			
Rock	Red	Soft	1270	1285			
Slate	White	Soft	1285	1300			
Lime	White	Hard	1300	1315			
Slate	Dark	Soft	1315	1335			
Sand	Dark	Medium	1335	1360			Little Dunkard
Slate	White	Soft	1360	1376			
Rock	Red	Soft	1376	1395			
Slate	Dark	Soft	1395	1440			
Lime	White	Hard	1440	1448			
Slate	White	Soft	1448	1465			
Rock	Red	Soft	1465	1472			
Sand	White	Medium	1472	1495			Big Dunkard
Slate	Dark	Soft	1495	1510			
Sand	Light		1510	1540			
Slate	Dark	Soft	1540	1555			
Coal	Black	Soft	1555	1560			
Sand	White	Medium	1560	1595			Gas Sand.
Slate	Black	Soft	1595	1655			
Lime	White	Hard	1655	1670			
Slate	Dark	Soft	1670	1695			
Sand	Light	Medium	1695	1740			1st. Salt Sand.
Slate	Black	Soft	1740	1775			
Sand	Dark	Medium	1775	1790	Water	1776	4 Bailers per Hr.
Slate	Dark	Soft	1790	1840			
Sand	Light	Medium	1840	1900			2nd. Salt Sand.
Slate	Black	Soft	1900	1907			
Lime	White	Hard	1907	1917			
Slate	Dark	Soft	1917	1951	2112		
Sand	Dark	Hard	1951	1972	1139		3rd. Salt Sand.
Slate	Dark	Soft	1972	1993			
Sand	Dark	Hard	1993	2003	973		
Slate	Dark	Soft	2003	2020			
Sand	Light	Hard	2020	2080			Maxton Sand.
Sand	White	Hard	2080	2112			Big Lime
Sand	White	Hard	2112	2160			Big Injun
Sand	White	Medium	2160	2165	Gas	2160-2165	2/10 W. 1". Big Injun Sand.
Sand	White	Hard	2165	2176			
Sand	White	Medium	2176	2181	Gas	2176-2181	1/10 W. 1". Big Injun Sand.
Broken	Dark	Soft	2181	2250			
Sand	Dark	Hard	2250	2370			
Slate	Black	Soft	2370	2372			
Sand	Dark	Hard	2372	2385	2080	985	
TOTAL DEPTH			2385		1139	1139	
					741	134	

Date June 5, 1937.

APPROVED CARNEGIE NATURAL GAS COMPANY, Owner

By *B. Hatcher* Land Agent.  
(Title)