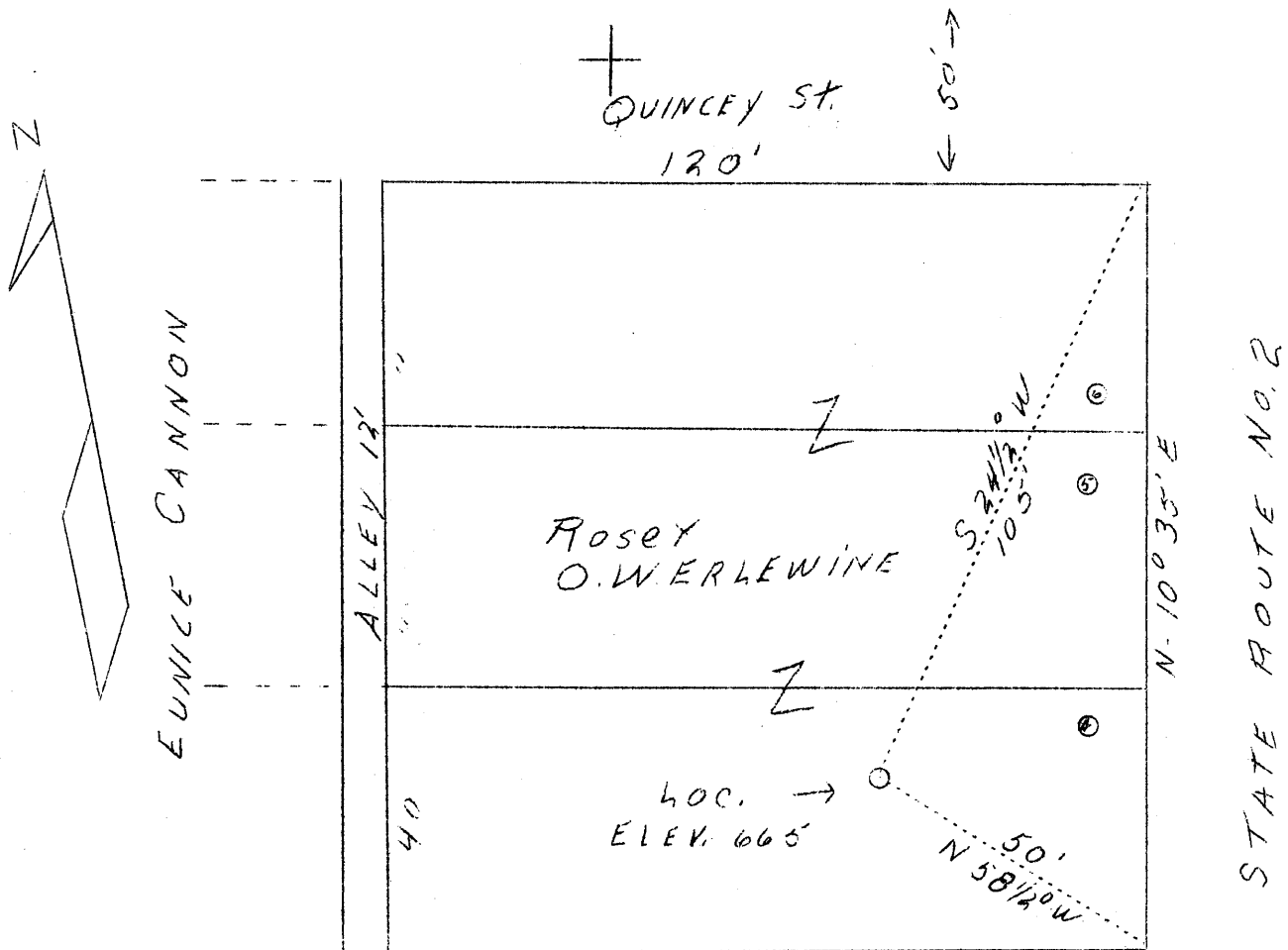


LATITUDE 39° 45'

LONGITUDE 80° 45'



GEO. FAUGHARTY

3.92 W  
2.55 S

abd 42

New Location

<p>Company W. F. Burgess          Address Glendale, W. Va.          Farm Rose &amp; O. W. Erlewine          Acres Lots 4,5 &amp; 6, Proctor, W.Va.          Well (Farm) No. One          Elevation (SP) 665'          Quadrangle New Martinsville          County Wetzel          District Proctor          Engineer F. W. Parsons          Eng. Reg. No. 203          File No. W.          Date Oct. 20, 1938          Scale 1" - 30'-0"</p>	<p>STATE OF WEST VIRGINIA          Department of Mines          OIL &amp; GAS DIVISION          Charleston</p> <p>WELL LOCATION MAP</p> <p>File No. <u>Wet-203</u></p> <p>x Denotes location of well on U. S. Topographic Maps, scale 1 to 62,500, latitude and longitude lines being represented by border lines as shown.</p> <p>- Denotes one inch spaces on border line of original tracing.</p>
---	--

WEST VIRGINIA DEPARTMENT OF MINES

OIL & GAS DIVISION

Well Record

Permit No. Wet-203

Gas Well

New Martinsville Quad.

CASING & TUBING

Company	Burgess & Wasmuth	8-1/4	8	8
Address	Moundsville, W. Va.	6-1/4	164	164
Farm	Rosa & O.W. Erlewine ACRES Lots	4-7/8	523	523
Location	Ohio River			
Well No.	One ELEV. 665	COAL ENCOUNTERED:		
District	Proctor - Wetzel County	Mapletown - 155 show		
Surface & Mineral Address	Rosa & O. W. Erlewine Proctor, W. Va.	Pittsburgh 250		
Drilling commenced	Oct. 2, 1938			
Drilling completed	Oct. 15, 1938			
Volume	600,000 c.f.			
Rock Pressure	100 lbs. 12 hrs.			
Fresh Water	90			
Salt Water	None			

Formation Color <sup>Har</sup> TOP Base Result

Formation Color <sup>Har</sup> TOP Base Result

1st Cow Run	lgt	h	550	570	Gas 565														
-------------	-----	---	-----	-----	---------	--	--	--	--	--	--	--	--	--	--	--	--	--	--

Coal formations were very thin.  
Light show of gas in Pittsburgh vein.

