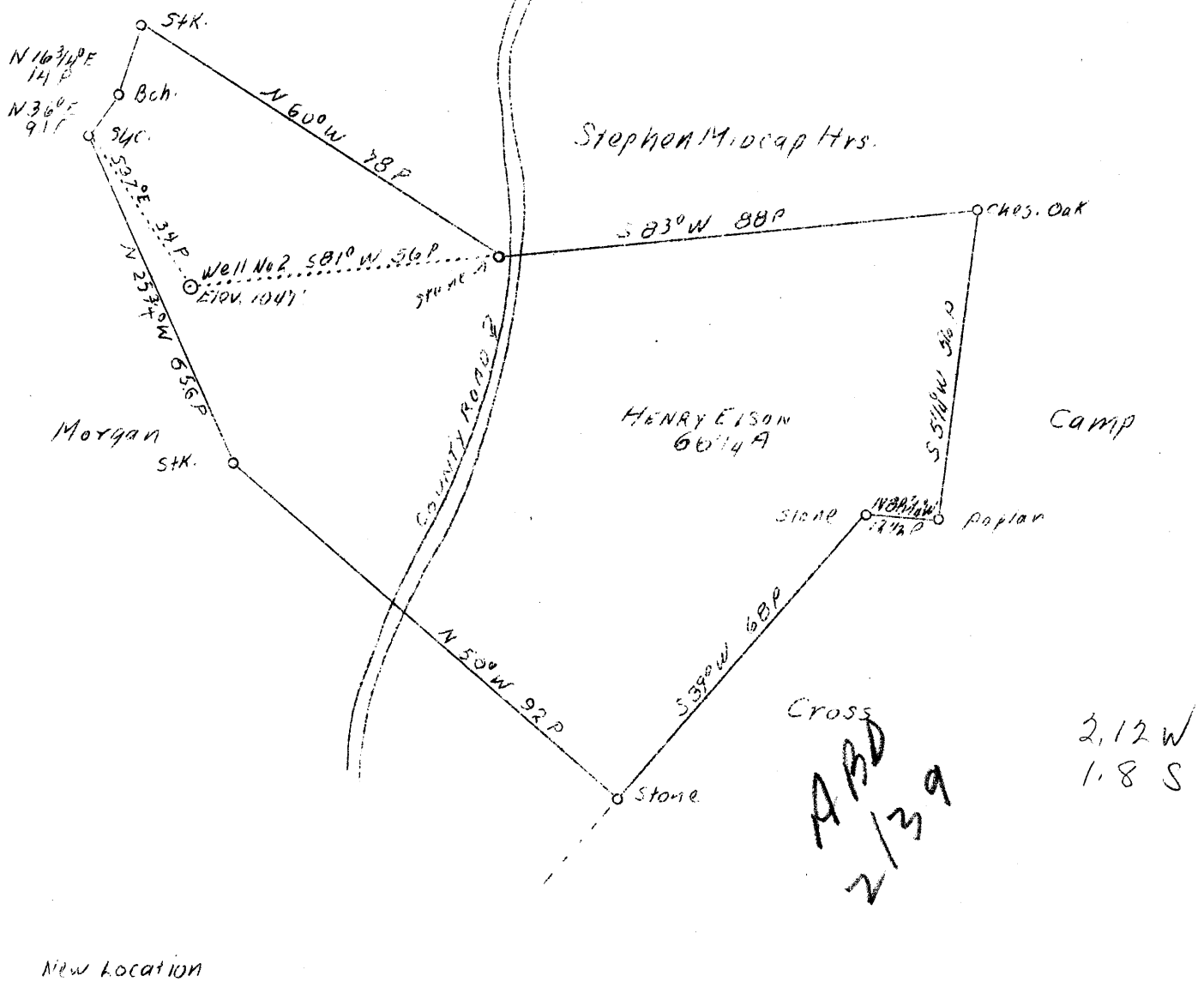


LATITUDE 39° 35'

LONGITUDE 80° 40'



Company C. B. Smith  
 Address R. No. 3, Parkersburg, W. Va.  
 Farm Henry Elson  
 Acres 66-1/4  
 Well (Farm) No. Two  
 Elevation (SP) 1047.0  
 Quadrangle New Martinsville SE.  
 County Wetzel  
 District Green  
 Engineer J. E. Anderson  
 Eng. Reg. No. Surveyor  
 Date Aug. 25, 1938  
 Scale 1" - 30 poles

STATE OF WEST VIRGINIA  
 Department of Mines  
 OIL & GAS DIVISION  
 Charleston

WELL LOCATION MAP

File No. Wet-210

x Denotes location of well on U. S. Topographic Maps, scale 1 to 62,500, latitude and longitude lines being represented by border lines as shown.

- Denotes one inch spaces on border line of original tracing.

Latitude

Longitude

210  
1.67s  
2.02w

Topo Location

7.5' Loc. \_\_\_\_\_ 15' Loc. \_\_\_\_\_  
(calc.) \_\_\_\_\_

Company CB Smith

Farm Henry Elson

15' Quad \_\_\_\_\_  
(sec.)

7.5' Quad Porters Falls

District Green

WELL LOCATION PLAT

County 103 Permit 210

WEST VIRGINIA DEPARTMENT OF MINES

OIL & GAS DIVISION

WELL RECORD

Permit No. Wet-210

Dry Hole

New Martinsville Quad.

CASING & TUBING

Company	Har-Lee Oil Co.	10	200
Address	Parkersburg, W. Va.	8-1/4	1065
Farm	Henry Elson ACRES 66	6-5/8	1355
Location	Fluharty's Run	5-3/16	1930
Well No.	Two ELEV. -1047		
District	Green - Wetzel County		
Sur. & Min.	Henry Elson, R#2, New Martinsville, W. Va.		
Commenced	Nov. 8, 1938		
Completed	Dec. 13, 1938		
Open Flow	-		
Volume	-		
Rock Pres.	-		
Oil	-		
Water	-		

Formation Color <sup>Har</sup> TOP Base Result Formation Color <sup>Har</sup> TOP Base Result

Conductor				10		Water				1775	
Sand				10	55	Hole Full water				1785	
Slate & Shells				55	200	Lime blk				1815	1830
Slate & Shells				200	500	Lime Sandy				1830	1900
Red Rock				500	530	Lime Sandy				1900	1934
Lime				530	535	✓ Sand Hard				1934	1942
Slate & Shells				535	600	Slate				1942	1946
Lime				600	615	✓ Lime-Little				1946	1955
Red Rock				615	640	✓ Pencil Core				1955	1965
Lime				640	675	✓ Big Line				1965	2030
Slates				675	677	✓ Keener Sand					
Lime				677	700	Mostly Lime				2030	2050
Slate & Shells				700	800	Big <del>Lime</del> Sand				2050	2130
✓ Pitts. Coal Blossom				800	801	Bottom of Hole					2135
Line Hard				801	820						
Slate blue				820	870						
Sand				870	895	Gas 21291/2 to 2130					
Slate & Shells				895	955	Not gauged - Pressure not taken					
✓ Sand <del>Mudstone</del>				955	965						
Lime				965	973						
Rock pink				973	985						
Lime				985	995						
Slate blue				995	1000						
Lime				1000	1005						
Slate blue				1005	1010						
Rock red				1010	1042						
Slate white				1042	1065						
Lime				1065	1070						
Slate white				1070	1100						
Slate				1100	1120						
Slate black				1120	1130						
Slate blue				1130	1140						
Slate Sandy				1140	1170						
Sand				1170	1190						
Slate				1190	1200						
Rock Pink				1200	1220						
Lime				1200	1230						
Slate & Shells				1230	1315						
Rock Pink				1315	1330						
Slate blue				1330	1340						
✓ Big Dunkard Sand bkn				1340	1365						
Lime				1365	1375						
Slate & Shells				1375	1420						
✓ Sand upper <del>Gr.</del>				1420	1435						
Slate				1435	1470						
✓ Sand <del>was Sand lower</del>				1470	1520						
Slate blk				1520	1650						
✓ Sand Salt <del>sand</del>				1650	1815						

1047  
800  
700

1965  
130  
1077  
1070

205  
130  
98