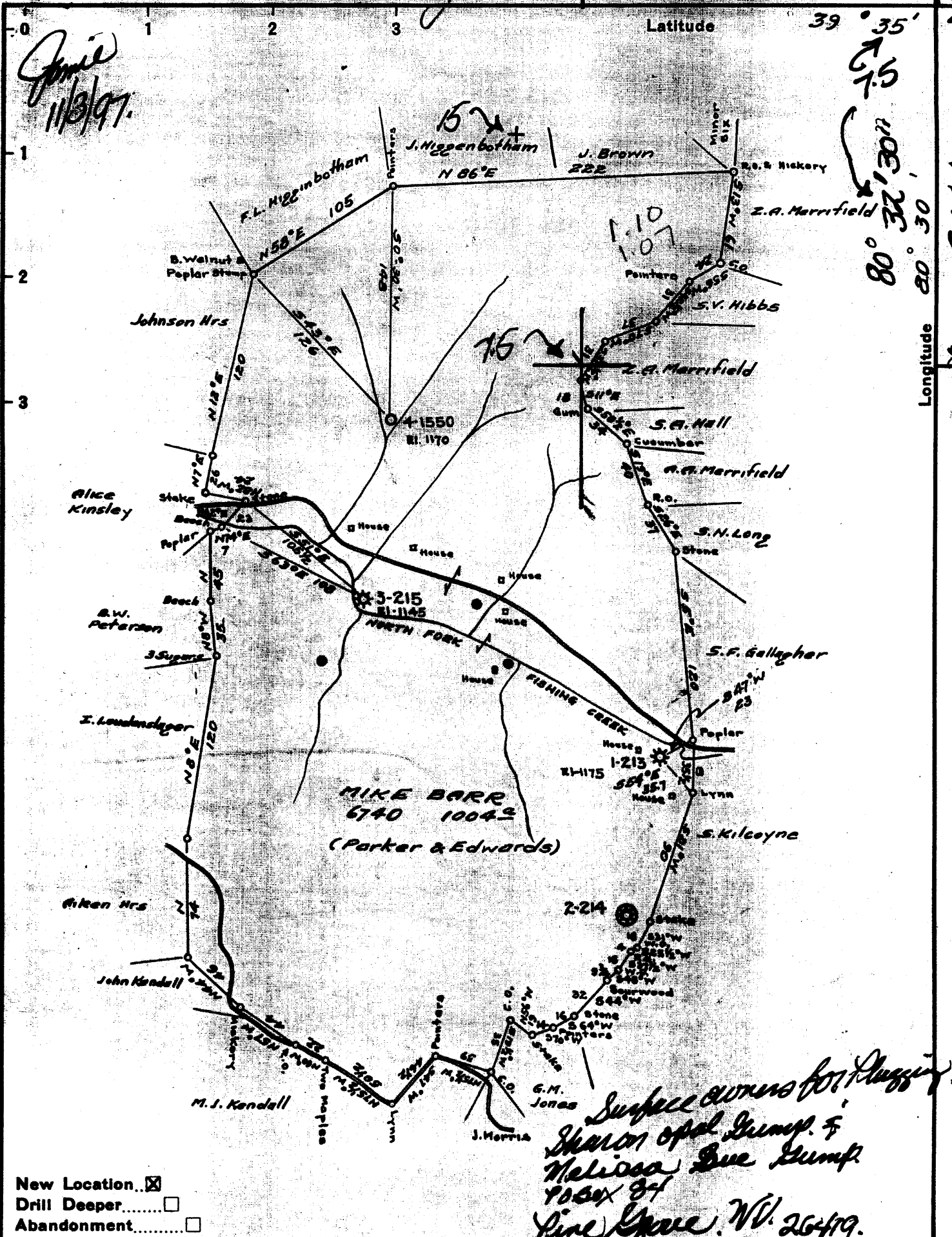


5810'



- New Location...
- Drill Deeper.....
- Abandonment.....

*Surface owners for Plugging
Sharon opal Gump. &
Melissa Sue Gump
7004 84
Pine Grove. W.V. 26419.*

Company CARNEGIE NATURAL GAS
 Address PITTSBURGH, PA.
 Farm MIKE BARR
 Tract _____ Acres 1000 Lease No. 6740-74
 Well (Farm) No. 4 Serial No. 1550
 Elevation (Spirit Level) 1170
 Quadrangle LITTLETON SE 15
 County WETZEL District GRANT
 Engineer R.L. SWENEY
 Engineer's Registration No. _____
 File No. _____ Drawing No. _____
 Date 11-25-40 Scale 1" = 80 rods

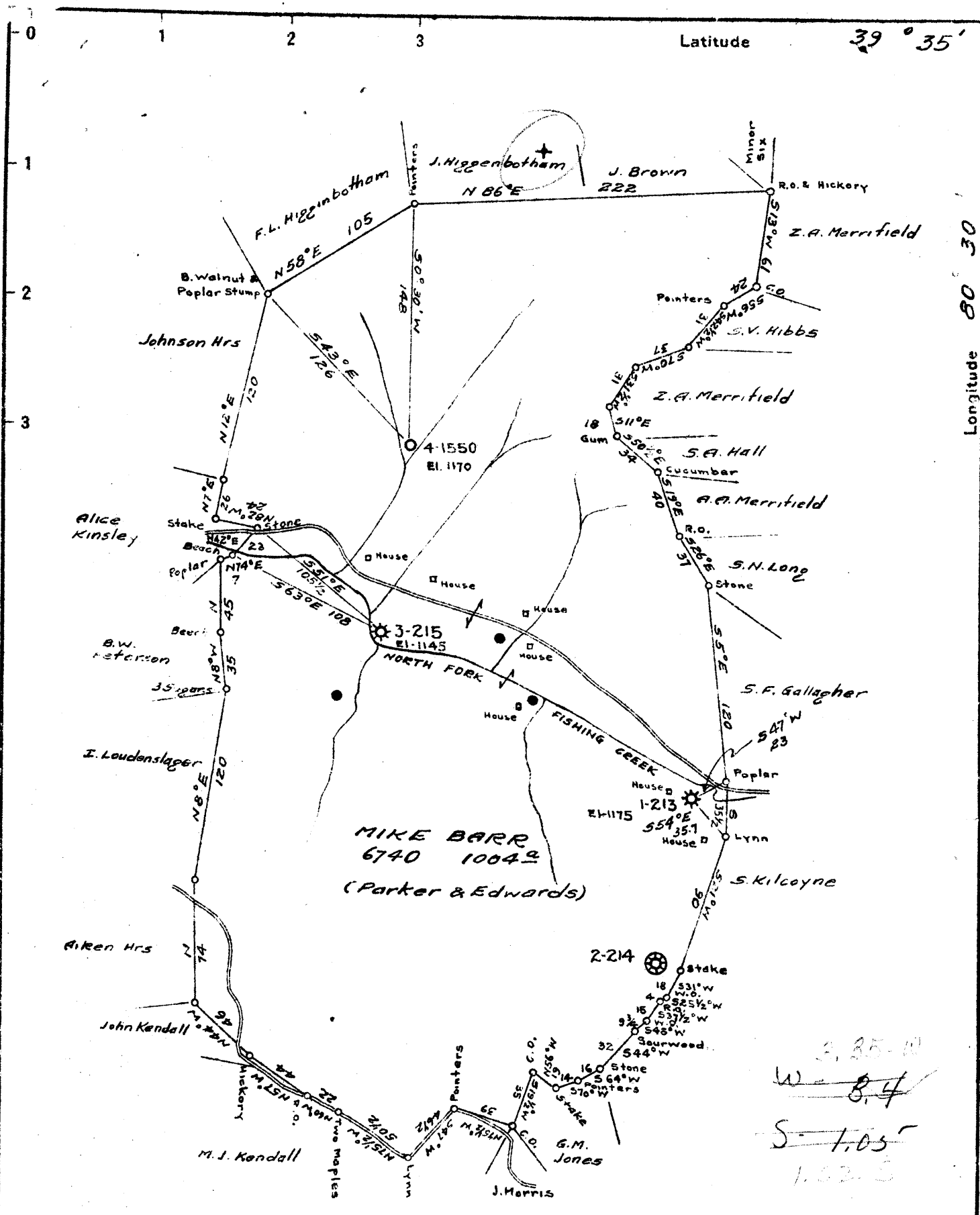
WEST VIRGINIA
 DIVISION OF ENVIRONMENTAL PROTECTION
 OFFICE OF OIL AND GAS
 #10 McJUNKIN ROAD
 NITRO, WEST VIRGINIA 25143-2506

WELL LOCATION MAP
 941 Well No. 44-103 - 00248 P.
 Big Run 7.5 Big built Dec. 31, 1940
 Well completed Feb 27, 1941. to
 1999 production from Big Run
 Carnegie Permanently Plugged

Latitude

39° 35'

Longitude 80° 30'



New Location X
 Drill Deeper
 Abandonment

Company CARNEGIE NATURAL GAS
 Address PITTSBURGH, PA.
 Farm MIKE BARR
 Tract _____ Acres 1004 Lease No. 6740-7A
 Well (Farm) No. 4 Serial No. 1550
 Elevation (Spirit Level) 970
1170
 Quadrangle LITTLETON SE
 County WETZEL District GRANT
 Engineer R. L. SWEENEY
 Engineer's Registration No. _____
 File No. _____ Drawing No. _____
 Date 11-25-40 Scale 1" = 80 rods

STATE OF WEST VIRGINIA
 DEPARTMENT OF MINES
 OIL AND GAS DIVISION
 CHARLESTON

WELL LOCATION MAP
 FILE NO. WET-248

+ Denotes location of well on United States Topographic Maps, scale 1 to 62,500, latitude and longitude lines being represented by border lines as shown.

- Denotes one inch spaces on border line of original tracing.

3, 35-11
 W-8.4
 S-1.05
 1.82.5

MIKE BARR NO. 4 (1550) WELL.

Grant District, Wetzel County, W. Va.
 By Carnegie Natural Gas Co., Pittsburgh, Pa.
 Located 3.4 mi. W. of 80° 30' and 1.03 mi. S. of 39° 35' - SE - Littleton
 Quadrangle.

Elevation, 1170' B. 970

Permit Wet-248.

Drilling commenced January 8, 1941; completed Feb. 27, 1941.

Shot March 19, 1941; depth, 1980-1990'.

Gas, 84,000 to 119,000 cu. ft. per day.

Rock pressure, 450 lbs. in 48 hours.

Oil - filled up 6" hole 200' in 1 hour; 425' in 8 hours.

Fresh water, 160'; salt water, 1440'.

Coal at 505' and 608'.

13" casing, 59'; 10", 520'; 8½", 1112'; 6¾", 1860'; 2" tubing, 1996'.

Section based on samples from 0 to 1503' examined by C. N. Apsouri and
 samples from 1503 to 1889' examined by J. H. C. Martens.

Record from Martens Dec. 2, 1943.

Top. Bottom. Thickness.

DUNKARD GROUP, 262+ FEET

0 -	30	30	Shale and siltstone, grayish-green
30 -	38	8	Shale, red
38 -	50	12	Shale, grayish-green
50 -	76	26	Sandstone, white
76 -	81	5	Siltstone, gray
81 -	125	44	Shale, gray
125 -	135	10	Siltstone, light-gray
135 -	180	45	Sandstone, white; also some gray shale (hole full of water at 160')
180 -	216	36	Shale, gray
216 -	234	18	Sandstone, white
234 -	239	5	Shale, gray
239 -	262	23	Sandstone, white

MONONGAHELA FORMATION, 350 FEET

262 -	265	3	Coal (Waynesburg Coal?)
265 -	278	13	Shale and clay, gray
278 -	283	5	Siltstone, white
283 -	288	5	Shale, light-gray, silty
288 -	294	6	Siltstone, white, sandy
294 -	300	6	Shale, gray
300 -	312	12	Siltstone, very light gray
312 -	325	13	Shale, red
325 -	337	12	Siltstone, light-green
337 -	370	33	Shale, gray to light-gray
370 -	381	11	Limestone, light-brown
381 -	400	19	Limestone, light-brown, 40 to 60%; shale and siltstone, 60 to 40%
400 -	425	25	Limestone, light-brown; also some soft gray to green shale
425 -	431	6	Shale, grayish-green, clayey
431 -	449	18	Limestone, brown to gray, shaly
449 -	454	5	Shale, gray and green, 75%; limestone, 25%
454 -	501	47	Limestone, light-brown; also some shale
501 -	505	4	No sample
505 -	506	1	Coal (Sewickley Coal)
506 -	542	36	Limestone, brown to very light brown
542 -	555	13	Shale, gray
555 -	589	34	Limestone, light-brown; also some shale
589 -	608	19	Shale, gray to dark-brown, pyritic
608 -	612	4	Coal (Pittsburgh Coal; gas at 612', 2633 cu. ft.) (OVER)

Top. Bottom. Thickness.

CONEMAUGH FORMATION, 571 FEET

612 -	627	15	Siltstone and shale, gray
627 -	640	13	Siltstone, light-gray
640 -	650	10	Sandstone, white
650 -	660	10	Shale, gray and red
660 -	680	20	Limestone, brown
680 -	697	17	Siltstone, light-green
697 -	713	16	Shale, red and yellow
713 -	740	27	Siltstone and silty shale
740 -	762	22	Sandstone, white (gas at 738-747', 42,160 cu.ft.)
762 -	801	39	Siltstone, green; also red and gray shale
801 -	825	24	Limestone, light-brown, 60%; shale of various colors, 40%
825 -	850	25	Shale, red
850 -	857	7	Sandstone, green; very fine
857 -	892	35	Shale and siltstone, green; also a little limestone (probably Ames Limestone and Shale)
892 -	940	48	Siltstone, green, sandy; also some red and gray shale
940 -	950	10	Shale, green, with specks of siderite
950 -	968	18	Siltstone, green, with siderite
968 -	975	7	Sandstone, white
975 -	1007	32	Shale, gray, with some red
1007 -	1022	15	Shale, green and gray
1022 -	1050	28	Siltstone, green to light-green
1050 -	1056	6	Sandstone, white
1056 -	1073	17	Shale, dark-gray
1073 -	1110	37	Shale, light-gray to light-green
1110 -	1117	7	Siltstone, white, sandy
1117 -	1124	7	No samples
1124 -	1138	14	Siltstone, green, with siderite spherulites (5% of coal in sample 1131-1138')
1138 -	1159	21	Sandstone, white, micaceous; also some gray shale
1159 -	1183	24	Siltstone, light-gray, sandy; a little coal in top 8 feet
ALLEGHENY AND POTTSVILLE FORMATIONS, 482 FEET			
1183 -	1220	37	Shale, gray, with small amount of limestone
1220 -	1230	10	Shale, gray
1230 -	1240	10	Siltstone, very light gray, sandy, with specks of siderite
1240 -	1320	80	Sandstone, white
1320 -	1335	15	Siltstone, gray, shaly
1335 -	1350	15	Shale, dark-gray
1350 -	1375	25	Sandstone, white; also some gray shale
1375 -	1385	10	Shale and siltstone, gray
1385 -	1454	69	Sandstone, white (salt water at 1440', hole full)
1454 -	1503	49	Shale and siltstone, gray
1503 -	1565	62	Sandstone, white, medium-grained, with traces of coal
1565 -	1573	8	Sandstone, white, medium-grained, 60%; gray shaly siltstone, 40%
1573 -	1665	92	Sandstone, white, medium- to fine-grained
MAUCH CHENK GROUP, 170 FEET			
1665 -	1695	30	Siltstone, very light gray, coarse, sandy, slightly calcareous
1695 -	1702	7	Shale, red and green
1702 -	1712	10	Sandstone, light-green, fine
1712 -	1738	26	Siltstone, light-green, highly calcareous; also much red shale
1738 -	1772	34	Shale, red, soft, calcareous
1772 -	1790	18	Shale, gray, soft; also some brown and gray limestone

(CONTINUED ON PAGE 3)

Top.	Bottom.	Thickness.	
1790 -	1803	13	Limestone, brown, 50%; soft gray and red shale, 50%
1803 -	1828	25	Shale, gray, soft, thinly laminated, 60 to 70%; brown to light-brown limestone, 40 to 30%; a little red and green shale
1828 -	1835	7	Shale, gray, soft, thinly laminated; also a little limestone and red and green shale ("Pencil Cave" 1830-1835' in driller's record)
			GREENBRIER LIMESTONE, 54+ FEET
1835 -	1874	39	Limestone, very light brown
1874 -	1889	15	Limestone, brown
1889 -	1999	110	No samples (gas at 1930-1935'; oil and gas at 1984-1992')
			Total depth

WEST VIRGINIA DEPARTMENT OF MINES
OIL & GAS DIVISION
W E L L R E C O R D

Permit No. Wet-248
Littleton Quad.

Gas and Oil Well

Company Carnegie Natural Gas Co.,
Address 1014 Frick Bldg., Pittsburgh, Pa.
Farm Mike Barr ACRES 1004
Location North Fork of Fishing Ck.
Well No. 4, E-1550 ELEV. 1179 Bar.
District Grant - Wetzel County 970
Surface See below
Mineral Hope Construction & Refining Co.,
Clarksburg, W. Va.
Commenced Jan. 8, 1941
Completed Feb. 27, 1941
Shot 3/19/41 - depth 1980-1990
Open Flow 4 to 8/10ths Water in 2 inch
Volume 84,000 to 119,000 c.f.
Rock Pressure 450 lbs. 48 hrs.
Oil Filled up 6" hole - 200' in 1 hr.
425' in 8 hrs.
Fresh Water 160
Salt Water 1440

CASING & TUBING

13	59	59
10	520	520
8-1/4	1112	1112
20	1860	1860
2		1996

Perf. top - 1964
" bot. - 1974

Coal at 505' & 608'

Gravel	gr	0	16	Lime	lt h	931	940
Slate	lt	16	30	Slate	lt s	940	960
Red Rock	rd	30	38	L. Dunkard	lt h	950	975
Lime	lt	38	57	Red Rock	rd s	975	1005
Slate	lt	57	110	Slate	wh m	1005	1025
Lime	lt	110	120	Lime	lt h	1025	1052
Slate	lt	120	135	Slate	bk s	1052	1090
Lime	lt	135	180	B. Dunkard	lt h	1090	1130 S.L. 1103
Slate	dk	180	215	Slate	dk s	1130	1178
Lime	lt	215	225	Lime	lt h	1178	1245
Sand	lt	225	235	Gas Sand	lt m	1245	1328
Slate	dk	235	245	Slate	dk s	1328	1370
Sand	lt	245	262	1st Salt S	lt h	1370	1395
Coal	bk	262	265	Slate	dk s	1395	1417
Slate	lt	265	285	2nd Salt S	lt h	1417	1458 SW 1440 HF
Lime	lt	285	305	Slate	dk s	1458	1468
Slate	dk	305	312	Lime	lt h	1468	1491
Red Rock	rd	312	325	Slate	dk s	1491	1508
Slate	lt	325	395	3rd Salt S	lt m	1508	1670
Lime	lt	395	431	Lime	dk h	1670	1695
Slate	lt	431	440	Red Rock	rd s	1695	1712
Lime	lt	440	497	Lime	wh m	1712	1780
Slate	dk	497	505	Slate	dk s	1780	1800
Mapletown Coal	bk	505	506 S.L. 506	Lime	lt h	1800	1805
Lime	wh	506	560	Slate	dk s	1805	1815
Slate	lt	560	570	Little Lime	dk h	1815	1830
Lime	wh	570	590	Pencil Cave	dk s	1830	1835
Slate	dk	590	608	Big Lime	dk h	1835	1898
Pgh. Coal	bk	608	612 Gas 612	Big Injun	lt	1898	
			2,633 c.f.	Total Depth			1999
Slate	lt	612	628				
Lime	lt	628	640 S.L. 612	Gas 1930-1935		74,530	blew down to 33,333 CF
Sand	dk	640	650	Oil & Gas 1984-1992			
Red Rock	rd	650	658	Gas vibrating thru oil - increased to			
Lime	dk	658	670	84,000 - 119,000 CF. Oil filled up 6" hole			
Slate	lt	670	675	200' in 1 hr and 425' in 8 hrs.			
Red Rock	rd	675	715				
Lime	lt	715	730				
Murphy Sand	dk med	730	762 Gas 738-747	SURFACE OWNERS:			
			42,160 c.f.	C. Ray Hinerman & Virgie L. Hinerman,			
Slate	dk med	762	780	Smithfield, W. Va.			
Lime	dk h	770	823	Arthur M. Prunty & Opal M. Prunty,			
Red Rock	rd s	828	850	Barrackville, W. Va.			
Lime	dk m	850	895				
Slate	lt s	895	910				
Red Rock	rd s	910	931				

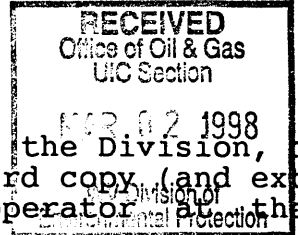
1835
125
1960
1970
970

1960
612
1348

WR-38
03-Nov-97

API # 47-103-00248-P

STATE OF WEST VIRGINIA
DIVISION OF ENVIRONMENTAL PROTECTION
SECTION OF OIL AND GAS



AFFIDAVIT OF PLUGGING AND FILLING WELL

AFFIDAVIT SHOULD BE IN TRIPLICATE, one copy mailed to the Division, one copy to be retained by the Well Operator and the third copy (and extra copies if required) should be mailed to each coal operator at their respective addresses.

Farm name: GUMP, SHARON & MELISSA Operator Well No.: BARR 1550

LOCATION: Elevation: 1,170.00 Quadrangle: BIG RUN
District: GRANT County: WETZEL
Latitude: 5750 Feet South of 39 Deg. 35 Min. 0 Sec.
Longitude 5810 Feet West of 80 Deg. 32 Min. 30 Sec.

Well Type: OIL X GAS X

Company: CARNEGIE NATURAL GAS COMPANY
800 REGIS AVENUE
PITTSBURGH, PA 15236

Coal Operator NONE
or Owner _____

Agent: DOUGLAS R. NAY

Coal Operator _____
or Owner _____

Permit Issued: 11/03/97

AFFIDAVIT

STATE OF WEST VIRGINIA,
County of MARION ss:

RALPH C. WRIGHT and _____ being first duly sworn according to law depose and say that they are experienced in the work of plugging and filling oil and gas wells and were employed by the above named well operator, and participated in the work of plugging and filling the above well, and RANDALL MICK Oil and Gas Inspector representing the Director, say that said work was commenced on the 3RD day of NOVEMBER, 1997, and that the well was plugged and filled in the following manner:

TYPE	FROM	TO	PIPE REMOVED	LEFT
GEL	1900	SURFACE	1996' of 2"	
CEMENT	1900	1700	1875' of 5"	
CEMENT	1200	1000	1096' of 6 5/8"	749'
CEMENT	700	400	434' of 8 1/4"	669'
CEMENT	150	SURFACE	78' of 10"	437'
			13"	59'
			8 1/4" PERF 608-612	
			10 1/4" PERF 505-506	
			13" PERF @ 16	

Description of monument: 6 5/8" CASING 4' ABOVE GROUND WITH APR# ATTACHED and that the work of plugging and filling said well was completed on the 10TH day of NOVEMBER, 1997.

And further deponents saith not.

Ralph Wright _____

Sworn and subscribe before me this 16TH day of DECEMBER, 1997
My commission expires: OCTOBER 26, 2001

J. Wayne Jones
Notary Public

Oil and Gas Inspector: Randall Mick

WEST 0248-P