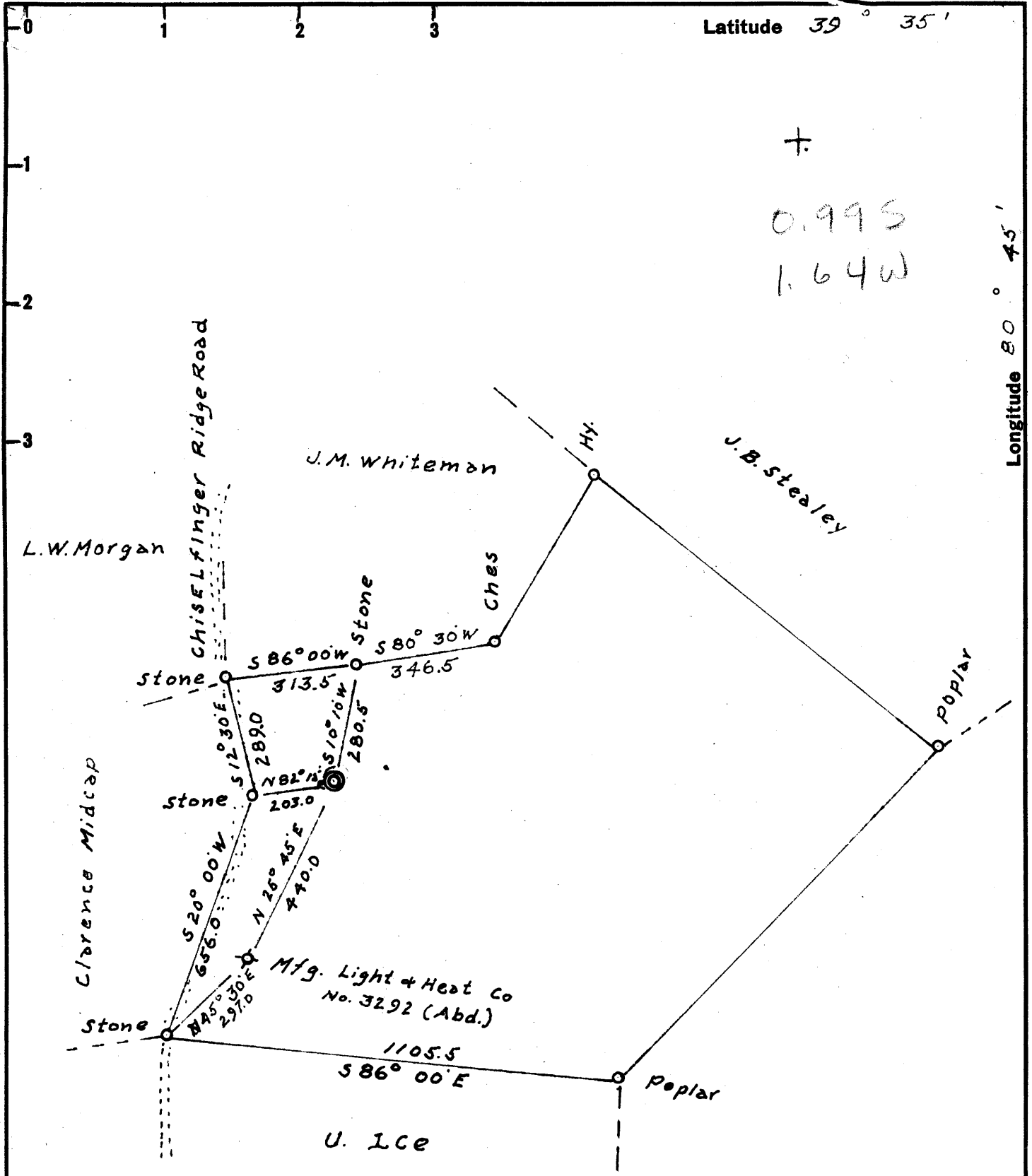


Latitude 39° 35'

Longitude 80° 45'

0.995
1.64W



New Location
 Drill Deeper
 Abandonment

Company PAUL ELSON Co.
 Address 1704 MOHICAN, St. S.E. MASSILLON, OHIO
 Farm CLARENCE MIDCAP
 Tract 1 Acres 37 Lease No. _____
 Well (Farm) No. ONE Serial No. _____
 Elevation (Spirit Level) 1294
 Quadrangle NEW MARTINSVILLE - SE
 County WETZEL District GREEN
 Engineer G.L. MCINTIRE
 Engineer's Registration No. 1187
 File No. _____ Drawing No. _____
 Date 8/25/59 Scale 1" = 300'

STATE OF WEST VIRGINIA
 DEPARTMENT OF MINES
 OIL AND GAS DIVISION
 CHARLESTON

WELL LOCATION MAP
 FILE NO. Wet-468

+ Denotes location of well on United States Topographic Maps, scale 1 to 62,500, latitude and longitude lines being represented by border lines as shown.
 - Denotes one inch spaces on border line of original tracing.



STATE OF WEST VIRGINIA
DEPARTMENT OF MINES
OIL AND GAS DIVISION 9

Quadrangle New Martinsville

WELL RECORD

Permit No. WEF-468

Oil or Gas Well Dry
(KIND)

| | | | | |
|--|-------------------|------------------|--------------|----------------|
| Company <u>Paul Elson and others</u> | Casing and Tubing | Used in Drilling | Left in Well | Packers |
| Address <u>1709 Mohican Street S.E. Massillon, Ohio</u> | Size | | | |
| Farm <u>Clarence Midcap</u> Acres <u>37</u> | 16 | | | Kind of Packer |
| Location (waters) <u>Big Fishing Creek</u> | 13 | | | <u>None</u> |
| Well No. <u># 1</u> Elev. <u>1294</u> | 10 | <u>258'</u> | <u>258'</u> | Size of |
| District <u>Green</u> County <u>Wetzel</u> | 6 3/16 | <u>1568'</u> | <u>1568'</u> | Depth set |
| The surface of tract is owned in fee by <u>Clarence Midcap</u> | 3 | | | Perf. top |
| <u>3302 Camden Ave. Address Parkersburg, W. Va.</u> | 2 | | | Perf. bottom |
| Mineral rights are owned by <u>Clarence Midcap</u> | Liners Used | <u>None</u> | | Perf. top |
| <u>Address Parkersburg, W. Va.</u> | | | | Perf. bottom |
| Drilling commenced <u>Oct. 17, 1959</u> | | | | |
| Drilling completed <u>Nov. 17, 1959</u> | | | | |
| Date Shot <u>None</u> From _____ To _____ | | | | |
| With _____ | | | | |
| Open Flow /10ths Water in _____ Inch | | | | |
| /10ths Merc. in _____ Inch | | | | |
| Volume <u>No</u> Cu. Ft. | | | | |
| Rock Pressure <u>No</u> lbs. hrs. | | | | |
| Oil _____ bbls., 1st 24 hrs. | | | | |
| WELL ACIDIZED <u>No</u> | | | | |
| WELL FRACTURED <u>No</u> | | | | |

CASING CEMENTED No SIZE _____ No. Ft. _____ Date _____
COAL WAS ENCOUNTERED AT 610' FEET _____ INCHES
1130' FEET _____ INCHES FEET _____ INCHES
FEET _____ INCHES FEET _____ INCHES

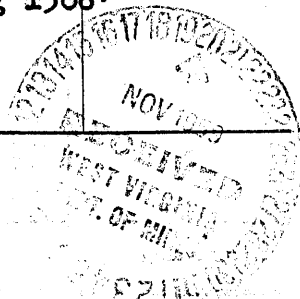
RESULT AFTER TREATMENT

ROCK PRESSURE AFTER TREATMENT

Fresh Water 215' Feet Salt Water _____ Feet

| Formation | Color | Hard or Soft | Top | Bottom | Oil, Gas or Water | Depth | Remarks |
|-------------------------|-------|--------------|------|--------|-------------------------|-------|---------|
| Clay | | | 0 | 8 | | | |
| Rock | | | 8 | 12 | | | |
| Shale | | | 12 | 57 | | | |
| Shale & R. Rock | | | 57 | 114 | | | |
| Lime | | | 114 | 126 | | | |
| Shale | | | 126 | 208 | | | |
| Sand | | | 208 | 217 | Show of water 215' | | |
| Slate & Red Rock | | | 217 | 258 | Run 10" casing 258' | | |
| Lime & Red Rock | | | 258 | 265 | | | |
| Sand | | | 265 | 330 | | | |
| Shale & Lime | | | 330 | 450 | | | |
| Lime | | | 450 | 508 | | | |
| Sand | | | 508 | 527 | | | |
| Shale & Lime | | | 527 | 630 | Show of Coal 610' | | |
| Slate & Red Rock | | | 630 | 793 | | | |
| Lime | | | 793 | 806 | | | |
| Slate & Lime | | | 806 | 1049 | Show of Coal 1049-1050' | | |
| Slate & Lime | | | 1049 | 1132 | Should be Mapletown | | |
| Sand | | | 1132 | 1135 | | | |
| Lime & Red Rock | | | 1135 | 1431 | Show of Coal 1130' | | |
| Sand | | | 1431 | 1440 | | | |
| Slate & Red Rock & Lime | | | 1440 | 1665 | Run 8" casing 1568' | | |
| Sand | | | 1665 | 1700 | | | |

(over)



| Formation | Color | Hard or Soft | Top <i>9</i> | Bottom | Oil, Gas or Water | Depth Found | Remarks |
|----------------|-------|--------------|--------------|--------|-------------------|-------------|---------|
| Shale | | | 1700 | 1710 | | | |
| Sand | | | 1710 | 1767 | | | |
| Slate | | | 1767 | 1850 | | | |
| Gritty Lime | | | 1850 | 1865 | | | |
| Sand | | | 1865 | 1900 | | | |
| Dark Slate | | | 1900 | 1925 | | | |
| Slate & Shells | | | 1925 | 1945 | | | |
| Sand | | | 1945 | 1960 | | | |
| Lime & slate | | | 1960 | 2005 | | | |
| Sand | | | 2005 | 2020 | | | |
| Shale & slate | | | 2020 | 2075 | Maxton Sand | 2075-2093' | |
| Sand | | | 2075 | 2093 | | | |
| Dark shale | | | 2093 | 2105 | | | |
| Little lime | | | 2105 | 2125 | | | |
| Slate | | | 2125 | 2185 | | | |
| Pencil Gave | | | 2185 | 2195 | | | |
| Big Lime | | | 2195 | 2276 | Run 6-5/8" Casing | 2205' | |
| Keener Sand | | | 2276 | 2284 | | | |
| Lime & sand | | | 2284 | 2305 | Top of Injun Sand | 2284' | |
| Sand (broken) | | | 2305 | 2330 | | | |
| Sand (hard) | | | 2330 | 2350 | | | |
| Sand (broken) | | | 2350 | 2410 | Total Depth | 2410' | |

2195
 1294

 901

1170

Date November 19, 19 59

APPROVED Paul Elson, Owner

By _____ (Title) Owner