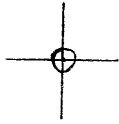


LATITUDE 39° 37' 30"



LONGITUDE 80° 25' 00"

7'5 OGIS topo location

7.5' loc 0.515 15' loc _____
 2.03W (calc.) _____

Company _____

Farm _____

Quad GLOVER GAP 7 1/2'

County WETZEL

District CHURCH

WELL LOCATION MAP

File No. 103 - 0737

(047)

Lease

LOCATION FOR WELL No. *WET-737*

Lease No. *100000000* for *100000000* Acres, *100000000* District.

DESCRIPTION

Well No. *1* on farm of *Sarah Higginbottom Church* Dist. Twp. *11-2-21* County *WVA*
525 feet from *west* line of *Amos Glover* Farm.
560 feet from " " line of " " Farm.
400 feet from *north* line of *J.D. Horner* Farm.
feet of well on Farm.

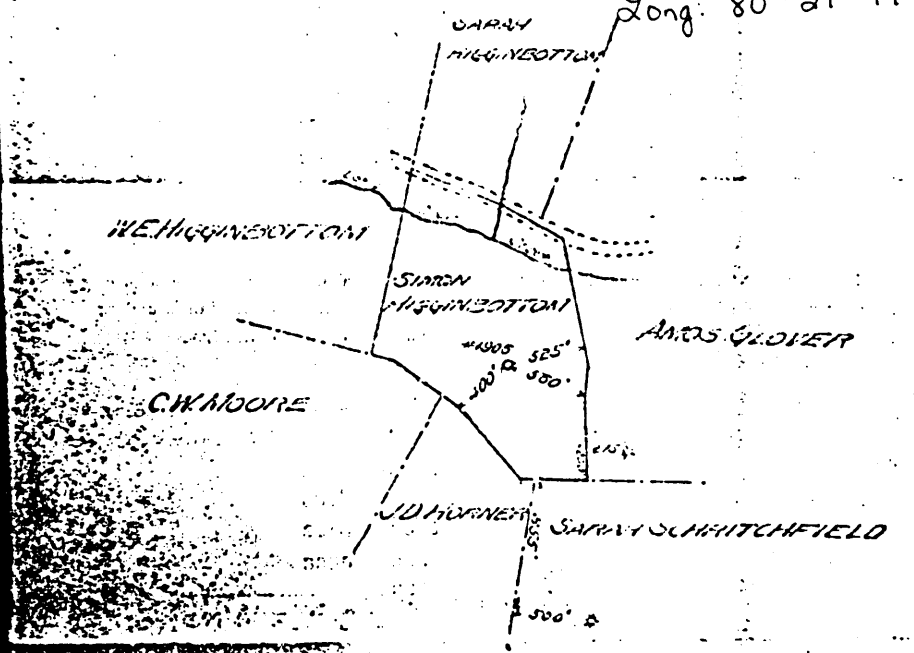
As shown on sketch below. Scale of sketch: 1" equals *200* feet.

Location made *Dec. 29* 1915 Signed *F.F. Murdoch, Engr.*

Reservation around Buildings, *500* Feet.

SPECIAL CONDITIONS:—

Lat. *39° 36' 59"*
Long. *80° 27' 19"*



WET-737

F.F. Walsh Dis't. Supt. Pittsburgh, Pa., *Jan. 4* 1916

100000000 Hundred, *100000000*

is hereby authorized to commence work on above well at once, as well must *at once* 191 . and must be completed

at once 191 . and must be completed

and when work is completed report must be filled out on reverse side

Retain one copy of this order for your files.

0002 0608

The Manufacturers Light & Heat Co.
 Farmers Bank Building, Pittsburgh, Penna.

Record of Well No. 1906 on Simon Higginbotham Farm 43 Acres
 Hundred, West Va. Field Church County West Va. State
 Rig commenced Feb. 18th, 1916, Completed March 2, 1916.
 Drilling commenced March 29, 1916, Completed May 27, 1916.
 Cost per foot \$ 1.25 Contractor Atkins Bros. Address Hundred, West Va.
 Driller's names F. L. Sanney - Thos. Litman

BOILER			ENGINE				RIG		
S.A.	No.	Name of Maker	S.P.	No.	Name of Maker	Year	Old	Height	Name of Boiler
						Yes		84	A. M. Hostutic

CONDUCTOR AND CASING USED IN DRILLING									
Conductor	12 inch	10 inch	8 1/2 inch	6 1/2 inch	4 1/2 inch	3 1/2 inch	2 1/2 inch	2 inch	1 1/2 inch
13"x 16'	260	1598	2388						3 inch 3372

CONDUCTOR AND CASING LEFT IN WELL									
Conductor	12 inch	10 inch	8 1/2 inch	6 1/2 inch	4 1/2 inch	3 1/2 inch	2 1/2 inch	2 inch	1 1/2 inch
13"x 16'	None	None	2388						3 inch 3372

OIL WELL					GAS WELL				
When Set	Size of Taps	1st Try's Protection	Top	Bottom	Size of Packer	Depth Set	Packed with	1st Water's Pressure	2nd Pressure
					6 5/8"x3"	3263	3"	130	800

FORMATION	Top	Bottom	Thickness	REMARKS
Fairview Coal	825	828	3	
Mapletown Coal	1068	1072	4	
Pittsburgh Coal	1165	1172	7	1/2 Bailer of water per hour
Little Dunkard	1575	1604	29	
Rig Do.	1625	1680	55	
Salt Sand	1935	2025	90	
Sand	2155	2188	33	
Maxon Sand	2238	2360	122	
Show Black Oil	2263			
Big Lime	2360	2417	57	
Big Injun Sand	2417	2635	218	
Show Gas	2440			
Fifty Foot Sand	3065	3110	45	
Thirty Foot Sand	3165	3195	30	
Gordon Stray	3210	3238	28	
" Sand	3253	3323	70	
Gas	3303	3307	4	
Fourth Sand	3344	3363	19	
Gas	3355	3363	8	
Total Depth		3366		

Duplicate

WET-737

Examined above information and measurements and found to be correct by _____
 Examined and approved by _____
 NOTE: The above blank must be filled out carefully by the Contractor, with a complete and accurate record of the W.C. and company, when presented for payment.

0002 0609