

DECIMAL LONG: 80.54160
SURFACE LONG: 80° 32' 29.8"

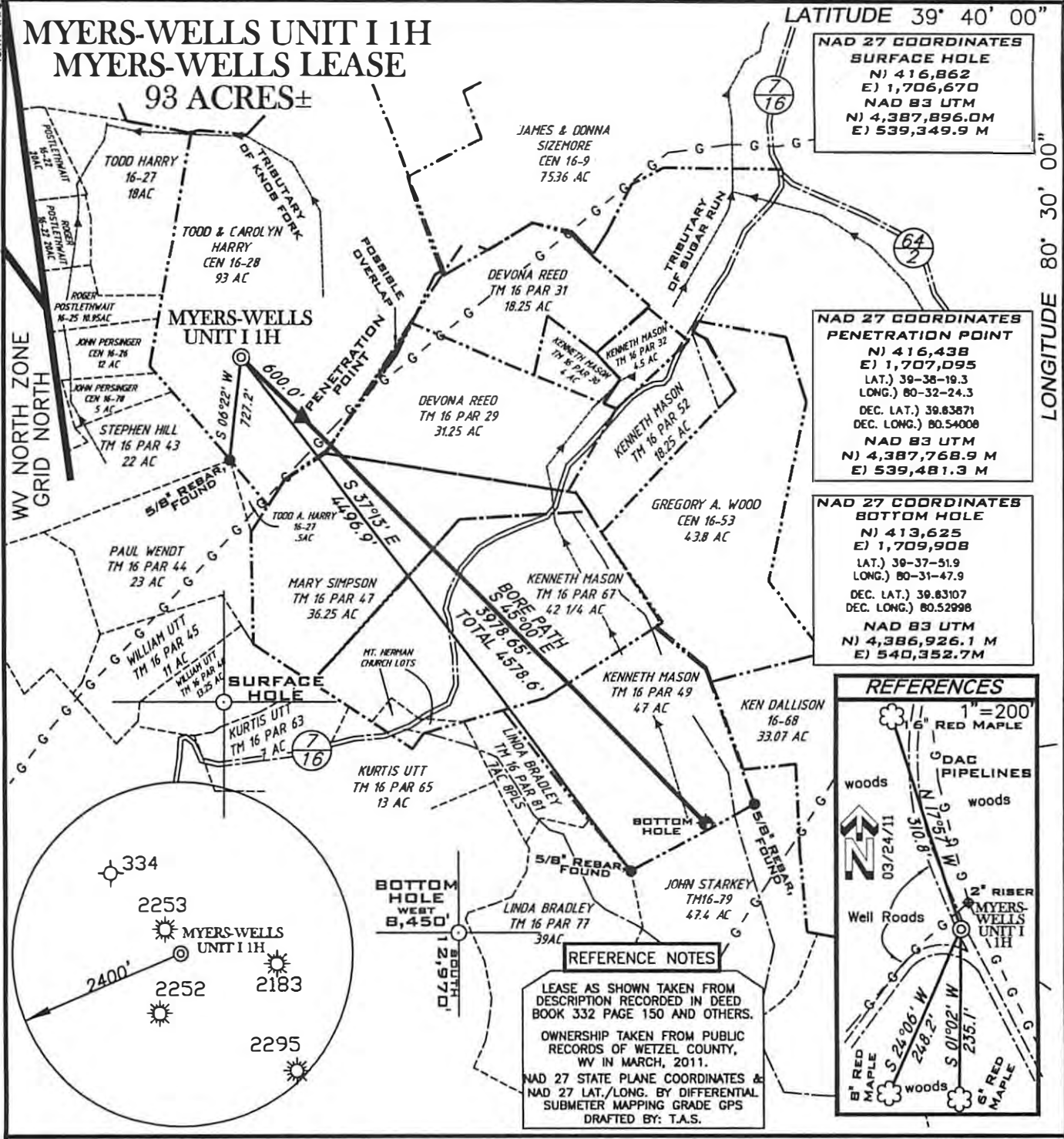
11,720'

LATITUDE 39° 40' 00"

LONGITUDE 80° 30' 00"

SURFACE HOLE SURVEYED LAT. 39° 38' 23.5"
DECIMAL LAT. 39.63986

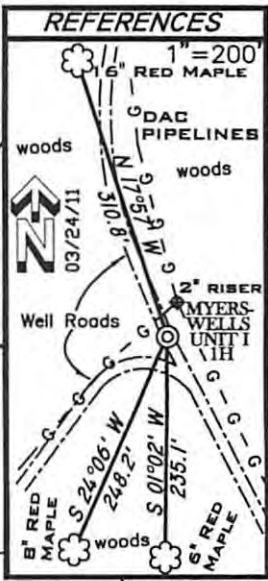
MYERS-WELLS UNIT I 1H MYERS-WELLS LEASE 93 ACRES±



**NAD 27 COORDINATES
SURFACE HOLE**
N) 416,862
E) 1,706,670
NAD 83 UTM
N) 4,387,896.0M
E) 539,349.9 M

**NAD 27 COORDINATES
PENETRATION POINT**
N) 416,438
E) 1,707,095
LAT.) 39-38-19.3
LONG.) 80-32-24.3
DEC. LAT.) 39.63871
DEC. LONG.) 80.54008
NAD 83 UTM
N) 4,387,768.9 M
E) 539,481.3 M

**NAD 27 COORDINATES
BOTTOM HOLE**
N) 413,625
E) 1,709,908
LAT.) 39-37-51.9
LONG.) 80-31-47.9
DEC. LAT.) 39.63107
DEC. LONG.) 80.52998
NAD 83 UTM
N) 4,386,926.1 M
E) 540,352.7 M



REFERENCE NOTES
LEASE AS SHOWN TAKEN FROM DESCRIPTION RECORDED IN DEED BOOK 332 PAGE 150 AND OTHERS.
OWNERSHIP TAKEN FROM PUBLIC RECORDS OF WETZEL COUNTY, WV IN MARCH, 2011.
NAD 27 STATE PLANE COORDINATES & NAD 27 LAT./LONG. BY DIFFERENTIAL SUBMETER MAPPING GRADE GPS
DRAFTED BY: T.A.S.

FILE NUMBER G110503(WB9-66)
DRAWING NUMBER G110503WP1H.dwg
SCALE 1" = 1000'
MINIMUM DEGREE OF ACCURACY 1/200
PROVEN SOURCE OF ELEVATION SUBMETER MAPPING
GRADE GPS

I THE UNDERSIGNED HEREBY CERTIFY THAT THIS PLAT IS CORRECT TO THE BEST OF MY KNOWLEDGE AND BELIEF AND SHOWS ALL THE INFORMATION REQUIRED BY LAW AND THE REGULATIONS ISSUED AND PRESCRIBED BY THE DEPARTMENT OF ENVIRONMENTAL PROTECTION

P.S. 1006
Terry A. Shreve



**STATE OF WEST VIRGINIA
DIVISION OF ENVIRONMENTAL PROTECTION
OFFICE OF OIL AND GAS**

DATE: JUNE 13, 2011
REV. DATE: OCTOBER 19, 2011 NOVEMBER 12, 2011
OPERATORS WELL NO. MYERS-WELLS UNIT I 1H
API WELL NO. _____

WELL TYPE: OIL ___ GAS X LIQUID INJECTION ___ WASTE DISPOSAL ___
(IF "GAS") PRODUCTION X STORAGE ___ DEEP ___ SHALLOW X

LOCATION ELEVATION 1435' WATERSHED TRIBUTARY OF KNOB FORK

DISTRICT CENTER COUNTY WETZEL

QUADRANGLE LITTLETON 7.5' LEASE NUMBER _____

SURFACE OWNER TODD AND CAROLYN HARRY ACREAGE 93±

OIL & GAS ROYALTY OWNER TODD AND CAROLYN HARRY et al LEASE ACREAGE 240.98±, 47.5±, 36.75±, 111±

PROPOSED WORK: DRILL X CONVERT ___ DRILL DEEPER ___ REDRILL ___ FRACTURE OR STIMULATE X PLUG OFF OLD FORMATION ___
PERFORATE NEW FORMATION ___ OTHER PHYSICAL CHANGE (SPECIFY) _____

TARGET FORMATION MARCELLUS ESTIMATED DEPTH 7650' + Horizontal Leg

WELL OPERATOR GRENADIER ENERGY PARTNERS, LLC. DESIGNATED AGENT SHARON BARTH - CT CORPORATION
ADDRESS 1610 WOODSTEAD CT. SUITE 330 THE WOODLANDS, TEXAS 77380 ADDRESS 707 VIRGINIA STREET EAST 15TH FLOOR CHARLESTON, WV 25301

04/19/2013