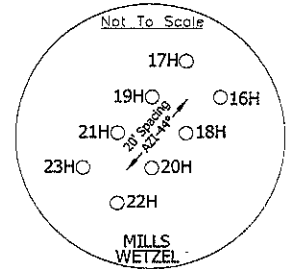


MILLS WETZEL #19H



MILLS WETZEL #19H
 LANDING POINT
 STATE PLANE
 COORDINATES
 NORTH ZONE
 (N) 370680
 (E) 1669012

MILLS WETZEL #19H
 LANDING POINT
 L & L DECIMAL
 39.51180
 80.67317

MILLS WETZEL #19H
 LANDING POINT
 UTM (NAD 83)
 4373634
 528111

MILLS WETZEL #19H
 LANDING POINT

MILLS WETZEL #19H

MILLS WETZEL #19H
 STATE PLANE
 COORDINATES
 NORTH ZONE
 (N) 370004
 (E) 1669014

MILLS WETZEL #19H
 L & L DECIMAL
 39.50994
 80.67313

MILLS WETZEL #19H
 UTM (NAD 83)
 4373428
 528115

NOTES ON SURVEY

TIES TO WELLS AND CORNERS ARE BASED ON STATE PLANE GRID NORTH WV NORTH ZONE NAD '27.

TIES TO REFERENCES ARE BASED ON MAGNETIC NORTH 10-20-11.

LEASE BOUNDARY SHOWN HEREON TAKEN FROM A TITLE EXAMINATION BY PATRICK N. RADCLIFF DATED NOVEMBER 7, 2009 AND INFORMATION PROVIDED BY STONE ENERGY CORPORATION.

SURFACE OWNER AND ADJOINER INFORMATION TAKEN FROM THE ASSESSOR AND COUNTY CLERK RECORDS OF WETZEL COUNTY IN SEPTEMBER, 2011 AND INFORMATION PROVIDED BY STONE ENERGY CORPORATION.

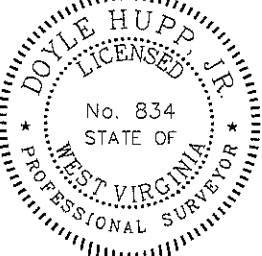
WELL LAT./LONG. ESTABLISHED BY SG-GPS.

I THE UNDERSIGNED, HEREBY CERTIFY THAT THIS PLAT IS CORRECT TO THE BEST OF MY KNOWLEDGE AND BELIEF AND SHOWS ALL THE INFORMATION REQUIRED BY LAW AND THE REGULATIONS ISSUED AND PRESCRIBED BY THE DIVISION OF ENVIRONMENTAL PROTECTION.

P.S.
 834

Doyle Hupp Jr.

HUPP Surveying & Mapping
 P.O. Box 647 Grantsville, WV 26147
 (304) 354-7035 EMAIL: hupp@frontiernet.net



(+) DENOTES LOCATION OF WELL ON UNITED STATES TOPOGRAPHIC MAPS.

DATE NOVEMBER 7, 20 11

OPERATORS WELL NO. MILLS WETZEL #19H

API WELL NO. 47-103-02760H6A

STATE LA COUNTY WV PERMIT 06/15/2012

MINIMUM DEGREE OF ACCURACY 1/2500 FILE NO. W1719 (BK51-49)

PROVEN SOURCE OF ELEVATION SG-GPS (OPUS) SCALE 1" = 1000'

STATE OF WEST VIRGINIA
 DIVISION OF ENVIRONMENTAL PROTECTION
 OFFICE OF OIL AND GAS

WELL TYPE : OIL GAS LIQUID INJECTION WASTE DISPOSAL IF "GAS" PRODUCTION STORAGE DEEP SHALLOW

LOCATION :
 ELEVATION 1335' WATERSHED TRIBUTARY OF PINEY FORK
 DISTRICT GREEN COUNTY WETZEL QUADRANGLE PINE GROVE 7.5'

SURFACE OWNER WEST VIRGINIA CONSERVATION COMMISSION ACREAGE 5104.5 ±
 ROYALTY OWNER MILLS WETZEL LAND Inc. LEASE ACREAGE 5104.5±

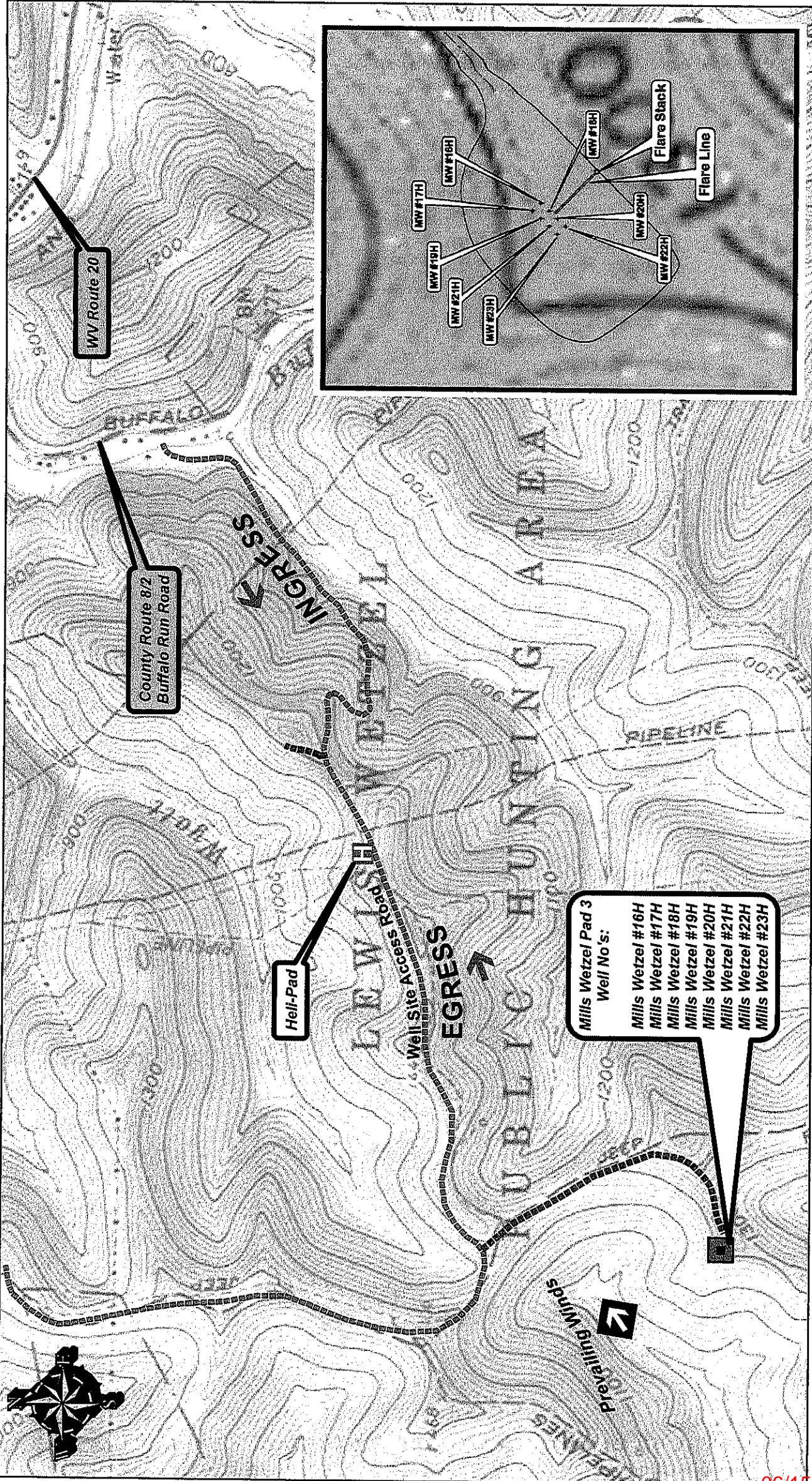
PROPOSED WORK : LEASE NO. _____

DRILL CONVERT DRILL DEEPER REDRILL FRACTURE OR STIMULATE PLUG OFF OLD FORMATION PERFORATE NEW FORMATION PLUG AND ABANDON CLEAN OUT AND REPLUG OTHER

PHYSICAL CHANGE IN WELL (SPECIFY) _____ TARGET FORMATION MARCELLUS
 ESTIMATED DEPTH 7,370' TVD 13,200' MD

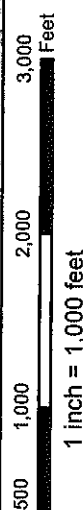
WELL OPERATOR STONE ENERGY CORPORATION DESIGNATED AGENT TIM MCGREGOR
 ADDRESS P.O. BOX 52807 LAFAYETTE, LA 70508 ADDRESS 6000 HAMPTON CENTER SUITE B MORGAN TOWN, WV 26505

COUNTY NAME
 PERMIT



STONE ENERGY - MILLS WETZEL PAD "3"
 WETZEL COUNTY, WV

- Mills Wetzel Pad 3
 Well No's:
- Mills Wetzel #16H
 - Mills Wetzel #17H
 - Mills Wetzel #18H
 - Mills Wetzel #19H
 - Mills Wetzel #20H
 - Mills Wetzel #21H
 - Mills Wetzel #22H
 - Mills Wetzel #23H



Date: 11/14/2011

06/15/2012