

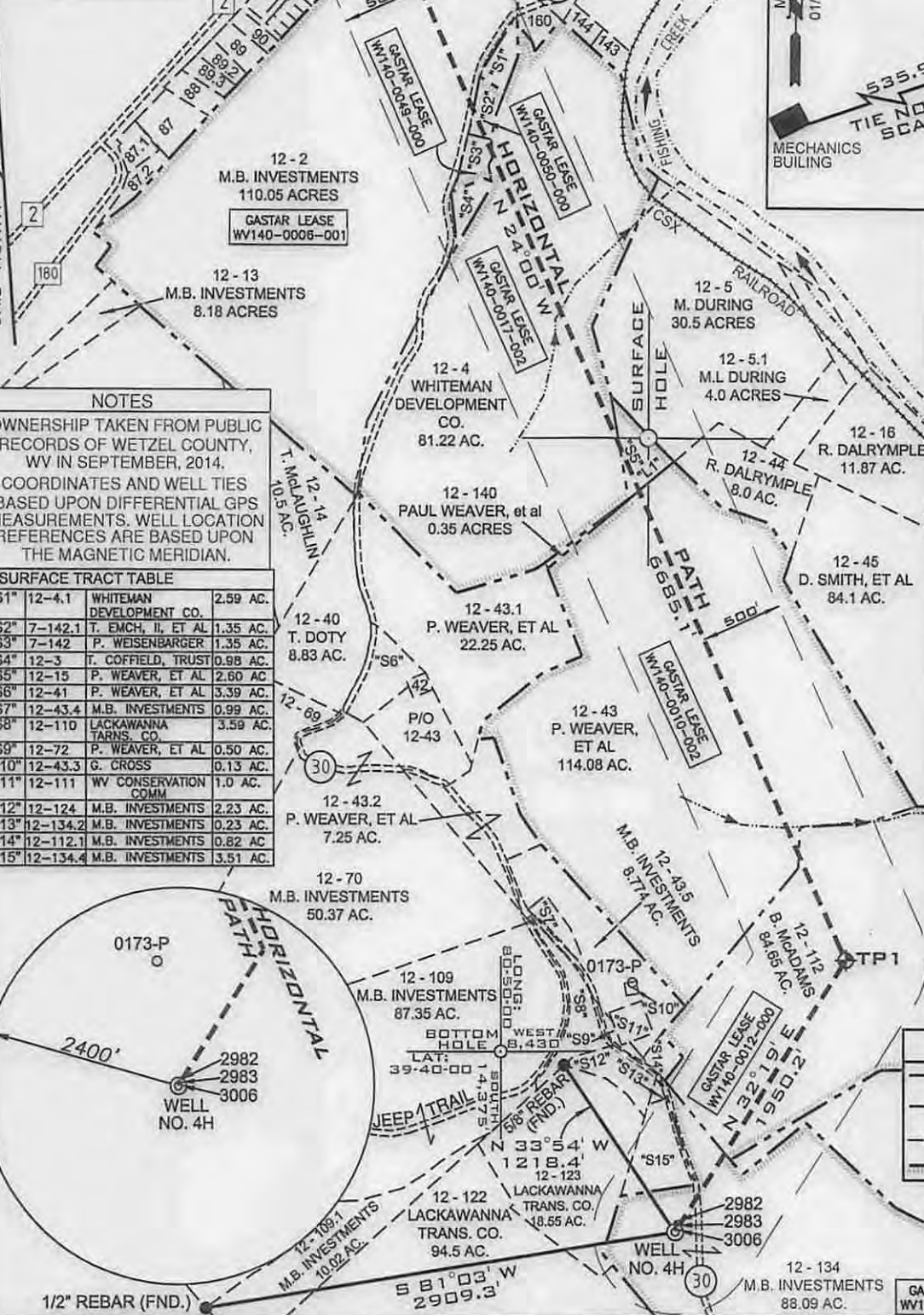
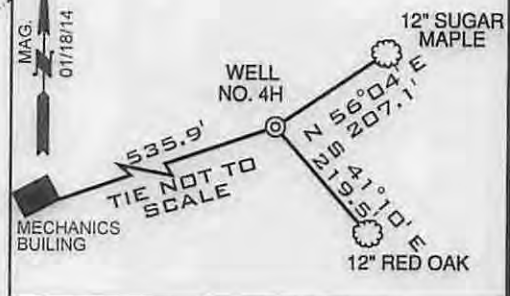
form ww6

LACKAWANNA WELL NO. 4H

483.39± ACRES

LATITUDE 39° 37' 30" REFERENCES SCALE 1"=300'

GASTAR LEASE TABLE	
"L1"	WV140-0010-002



Note: No water wells within 250' of well were found, no dwellings within 625' of pad center were found.

NOTE: BORE PATH BASED ON GRID NORTH.

SURFACE HOLE
UTM. NAD83, ZONE 17
IN METERS
N) 4,384,043.2
E) 512,301.3

BOTTOM HOLE
UTM. NAD83, ZONE 17
IN FEET
N) 14,383,315
E) 1,680,775

TARGET POINT 1
UTM. NAD83, ZONE 17
IN METERS
N) 4,384,550.6
E) 512,610.5

TARGET POINT 2
UTM. NAD83, ZONE 17
IN FEET
N) 14,384,980
E) 1,681,790

BOTTOM HOLE
UTM. NAD83, ZONE 17
IN METERS
N) 4,386,397.4
E) 511,751.1

TARGET POINT 1
UTM. NAD83, ZONE 17
IN FEET
N) 14,391,039
E) 1,678,970

LEGEND	
---	LEASED TRACTS
---	INTERIOR MINERAL TRACTS
---	SURFACE TRACTS
---	HARD LEASE LINE

(+) DENOTES LOCATION ON UNITED STATES TOPOGRAPHIC MAPS
12 - 125 B. McADAMS 40.66 AC.

NOTES
OWNERSHIP TAKEN FROM PUBLIC RECORDS OF WETZEL COUNTY, WV IN SEPTEMBER, 2014.
COORDINATES AND WELL TIES BASED UPON DIFFERENTIAL GPS MEASUREMENTS. WELL LOCATION REFERENCES ARE BASED UPON THE MAGNETIC MERIDIAN.

SURFACE TRACT TABLE		
"S1"	12-4.1	WHITEMAN DEVELOPMENT CO. 2.59 AC.
"S2"	7-142.1	T. EMCH, II, ET AL 1.35 AC.
"S3"	7-142	P. WEISENBARGER 1.35 AC.
"S4"	12-3	T. COFFIELD, TRUST 0.98 AC.
"S5"	12-15	P. WEAVER, ET AL 2.60 AC.
"S6"	12-41	P. WEAVER, ET AL 5.39 AC.
"S7"	12-43.4	M.B. INVESTMENTS 0.99 AC.
"S8"	12-110	LACKAWANNA TRANS. CO. 3.59 AC.
"S9"	12-72	P. WEAVER, ET AL 0.50 AC.
"S10"	12-43.3	G. CROSS 0.13 AC.
"S11"	12-111	WV CONSERVATION COMM 1.0 AC.
"S12"	12-124	M.B. INVESTMENTS 2.23 AC.
"S13"	12-134.2	M.B. INVESTMENTS 0.23 AC.
"S14"	12-112.1	M.B. INVESTMENTS 0.82 AC.
"S15"	12-134.4	M.B. INVESTMENTS 3.51 AC.



FILE NUMBER WV0110309
DRAWING NUMBER LACKAWANNA_WP_4H_Rev1
SCALE 1" = 1000'
MINIMUM DEGREE OF ACCURACY 1/200
PROVEN SOURCE SUBMETER MAPPING
OF ELEVATION GRADE GPS

I, THE UNDERSIGNED, HEREBY CERTIFY THAT THIS PLAT IS CORRECT TO THE BEST OF MY KNOWLEDGE AND BELIEF AND SHOWS ALL THE INFORMATION REQUIRED BY LAW AND THE REGULATIONS ISSUED AND PRESCRIBED BY THE DEPARTMENT OF ENVIRONMENTAL PROTECTION

P.S. Jonathan N. White
2122



WVDEP
OFFICE OF OIL & GAS
601 57TH STREET
CHARLESTON, WV 25304

DATE REVISED: FEBRUARY 09, 2015
OPERATORS WELL NO. LACKAWANNA NO. 4H
API WELL NO. 47-103-03049 H6A

WELL TYPE: OIL GAS LIQUID INJECTION WASTE DISPOSAL
(IF "GAS") PRODUCTION STORAGE DEEP SHALLOW
LOCATION ELEVATION 1302' WATERSHED (HUC 10) OUTLET MIDDLE ISLAND CREEK (UNDEFINED)
DISTRICT MAGNOLIA COUNTY WETZEL

QUADRANGLE PORTERS FALLS 7.5' LEASE NUMBER WV140-0017-002, WV140-0049-000, WV140-0050-000, WV140-0006-001, WV140-0010-002, WV140-0012-000
SURFACE OWNER M.B. INVESTMENTS ACREAGE 88.09
OIL & GAS ROYALTY OWNER M.B. INVESTMENTS, ET AL LEASE ACREAGE 483.39

PROPOSED WORK: DRILL CONVERT DRILL DEEPER REDRILL FRACTURE OR STIMULATE PLUG OFF OLD FORMATION
PERFORATE NEW FORMATION OTHER PHYSICAL CHANGE (SPECIFY) _____
PLUG & ABANDON CLEAN OUT & REPLUG
ESTIMATED DEPTH TVD:6975' TMD:13,997'

TARGET FORMATION MARCELLUS DESIGNATED AGENT MICHAEL McCOWN
WELL OPERATOR GASTAR EXPLORATION INC.
ADDRESS 229 W MAIN STREET, SUITE 301 CLARKSBURG WV, 26301

COUNTY NAME
PERMIT

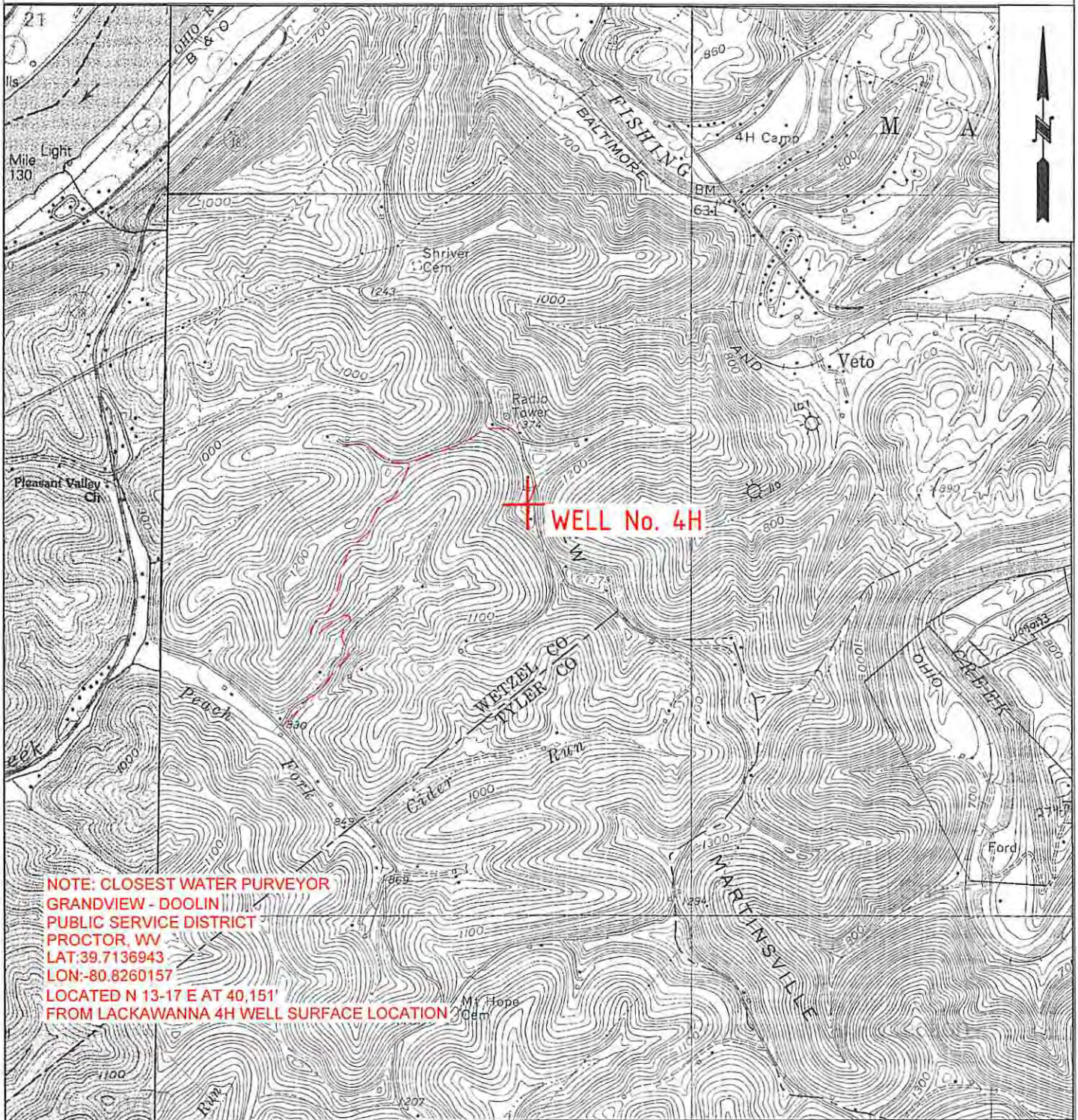
02/20/2015

WW-9

PROPOSED LACKAWANNA WELL No. 4H

SUPPLEMENT PG 2

4710303049



**NOTE: CLOSEST WATER PURVEYOR
 GRANDVIEW - DOOLIN
 PUBLIC SERVICE DISTRICT
 PROCTOR, WV
 LAT: 39.7136943
 LON: -80.8260157
 LOCATED N 13-17 E AT 40,151'
 FROM LACKAWANNA 4H WELL SURFACE LOCATION**

Office of Oil and Gas OCT 08 11AM WV Department of Environmental Protection	DMH 10-2-14	OPERATOR	TOPO SECTION	LEASE NAME
		GASTAR EXPLORATION INC. 229 W Main Street, Suite 301 Clarksburg, WV 26301	PORTERS FALLS 7.5'	LACKAWANNA
	W0110309		SCALE: 1"=2000'	DATE: DATE: 09/17/14