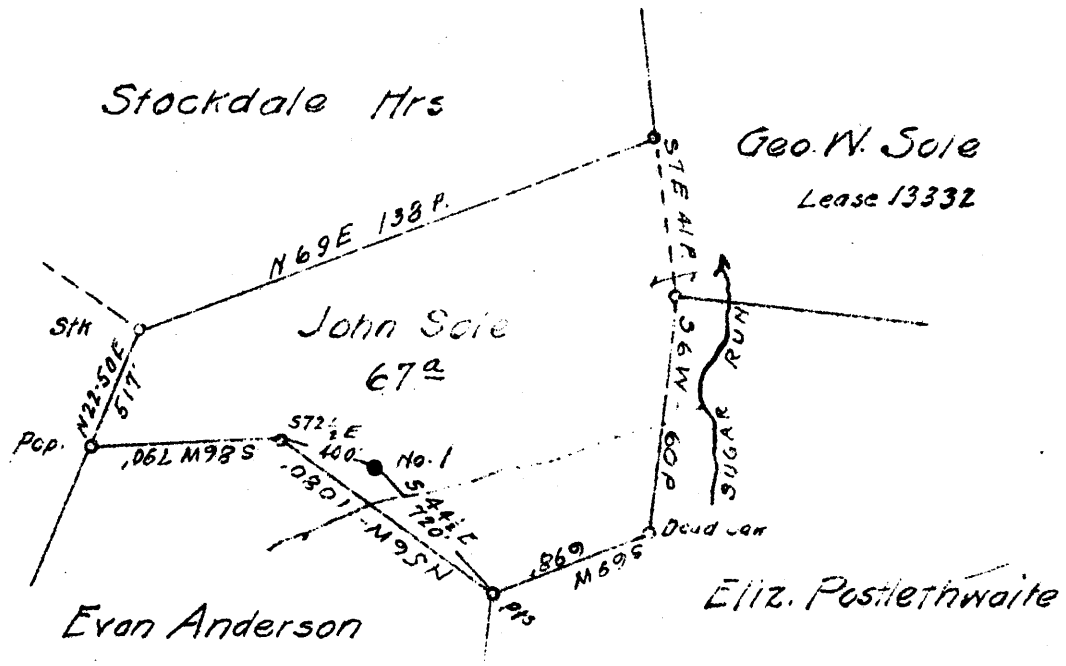


Latitude 40

Longitude 80 30



Coal owned by Littleton Coal & Coke Co
% Thos. S. Lackey, Uniontown Pa.

1.70 + 1.73 W
0.37

AUG 18 1943

Map N79- Sq. N15 E6

New Location
Drill Deeper
Abandonment

Company South Penn Natural Gas Co.
 Address Parkersburg W. Va.
 Farm John Sole
 Tract _____ Acres 135 Lease No. 13332
 Well (Farm) No. 1 Serial No. _____
 Elevation (Spirit Level) 1139' b.D.F. - 1138' b. ground
 Quadrangle Littleton
 County Wetzel District Clay
 Engineer A. G. Hilbert
 Engineer's Registration No. _____
 File No. _____ Drawing No. _____
 Date 6-30-43 Scale 1" = 800'

STATE OF WEST VIRGINIA
DEPARTMENT OF MINES
OIL AND GAS DIVISION
CHARLESTON

WELL LOCATION MAP
FILE NO. WET-448-A

+ Denotes location of well on United States Topographic Maps, scale 1 to 62,500, latitude and longitude lines being represented by border lines as shown.

- Denotes one inch spaces on border line of original tracing.

JOHN W. SOLE No. 1 - SOUTH PENN. N. G. CO. - WET-448-A

STATE OF WEST VIRGINIA
DEPARTMENT OF MINES
OIL AND GAS DIVISION

904

WELL RECORD

Permit No. 448-132

Oil or Gas Well OIL
(KIND)

Company South Penn Natural Gas Company
Address Union Trust Bldg. Parkersburg, W. Va.
Farm John Soles Acres 135
Location (waters) Sugar Run
Well No. 1 Elev. 1138.
District Clay County Wetzel
The surface of tract is owned in fee by Les Booth (?)
(?) Address Littleton, W. Va.
Mineral rights are owned by J. K. Robinson
1001 W. 6th St. Address Okmulgee, Okla.
Drilling commenced Jan. 25, 1901
Drilling completed March 30, 1901
Date Shot 7-17-17-70 Ots. -----
With -----

Casing and Tubing	Used in Drilling	Left in Well	Packers
Size			Kind of Packer. --
16			
13			
10	<u>348'4"</u>		Size of. --
8 1/4	<u>1332'6"</u>		--
6 5/8	<u>2181'</u>		Depth set. --
5 3/16			--
3			Perf. top. --
2			Perf. bottom. --
Liners Used			Perf. top. --
			Perf. bottom. --

Open Flow /10ths Water in ----- Inch
/10ths Merc. in ----- Inch
Volume ----- Cu. Ft.
Rock Pressure ----- lbs. ----- hrs.
Oil 45 bbls., 1st 24 hrs.
Fresh water --- feet --- feet
Salt water --- feet --- feet

CASING CEMENTED. -- SIZE -- No. Ft. -- Date
COAL WAS ENCOUNTERED AT 884 FEET 72 INCHES
-- FEET -- INCHES -- FEET -- INCHES
-- FEET -- INCHES -- FEET -- INCHES

Formation	Color	Hard or Soft	Top	Bottom	Oil, Gas or Water	Depth Found	Remarks
Pittsburgh Coal			884	890			
Dunkard Sand			1365	1435			
Gas Sand			1569	1629			
Salt Sand			1780	1920			
Big Lime			2057	2133			
Big Injun			2133	2360			
					Gas	2143	
					Gas	2154	
50 Foot Stray			2750	2790			
R Rock			2924	2935			
Gordon Sand			2935 top				
			2948	2982			
					Oil	2960	Show
					Oil	2966 top	
					Pay	2971-2975	
B. Slate			2982	2986			
Total Depth				2986			

