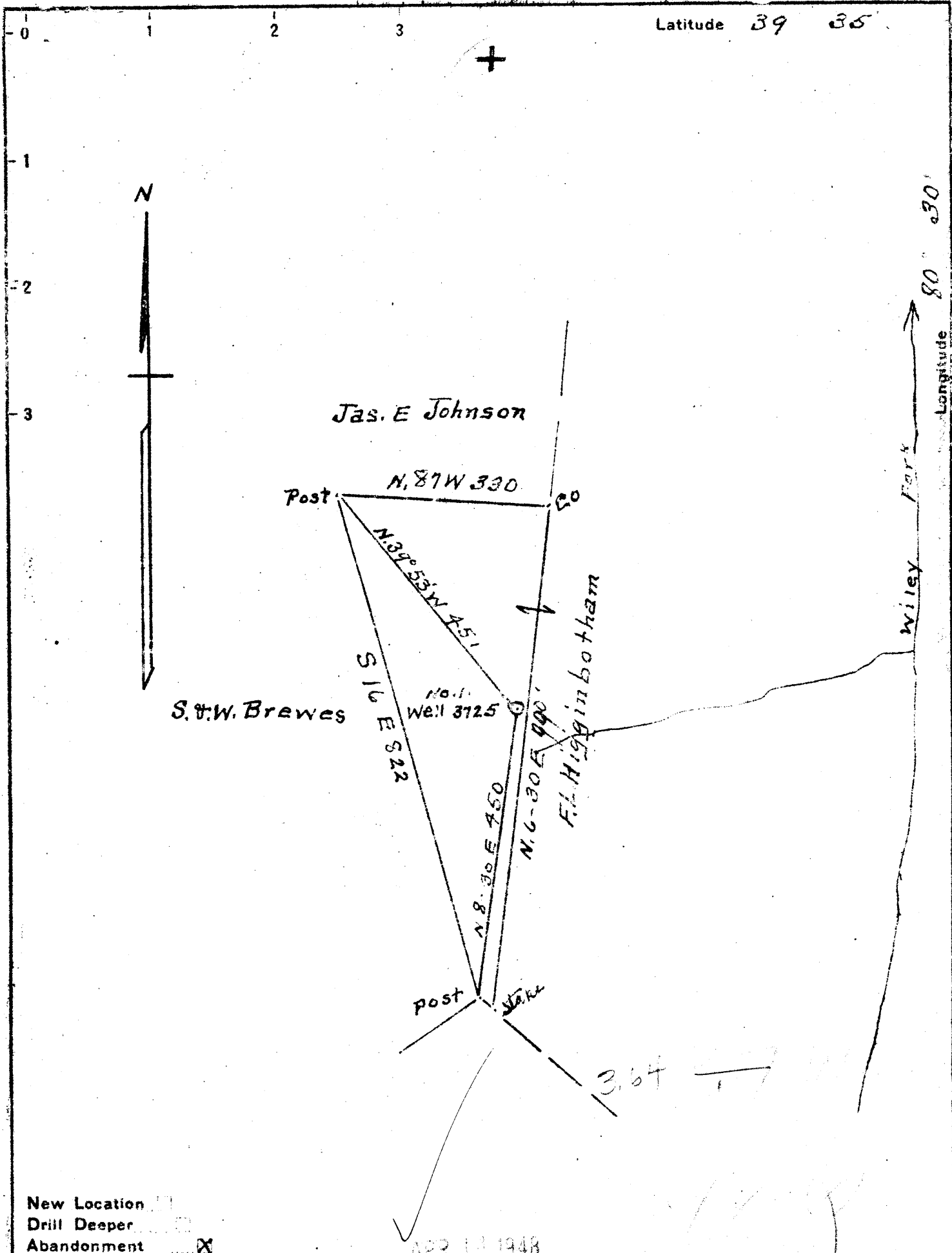


Latitude 39 35



New Location   
 Drill Deeper   
 Abandonment

APR 14 1948

Company Dunn-Mar Oil & Gas Co  
 Address Waynesburg Pa  
 Farm F. L. Higginbotham  
 Tract ONE Acres 15 Lease No. 17950  
 Well (Farm) No. ONE Serial No. 3725  
 Elevation (Spirit Level) 1197  
 Quadrangle Littleton  
 County Wetzel District Grant  
 Engineer A. L. Headley  
 Engineer's Registration No. \_\_\_\_\_  
 File No. \_\_\_\_\_ Drawing No. \_\_\_\_\_  
 Date 3-10-1948 Scale 1 inch = 200 ft

STATE OF WEST VIRGINIA  
 DEPARTMENT OF MINES  
 OIL AND GAS DIVISION  
 CHARLESTON

WELL LOCATION MAP  
 FILE NO. WEL-646-A

+ Denotes location of well on United States Topographic Maps, scale 1 to 62,500. latitude and longitude lines being represented by border lines as shown.

- Denotes one inch spaces on border line of original tracing.

FILE: HIGGINBOTHAM No. 1 (3725) - DUNN-MAR Oil & Gas Co.

WEL-646-A



1219

STATE OF WEST VIRGINIA  
DEPARTMENT OF MINES  
OIL AND GAS DIVISION

WELL RECORD

Permit No. 116 A

Oil or Gas Well Gas  
(KIND)

Company Dunn-Mar Oil and Gas Co.  
Address Waynesburg, Pa.  
Farm F. L. Higginbotham Acres 15  
Location (waters) \_\_\_\_\_  
Well No. One (1) Elev. 1197  
District Grant County Wetzel  
The surface of tract is owned in fee by \_\_\_\_\_  
Address \_\_\_\_\_  
Mineral rights are owned by \_\_\_\_\_  
Address \_\_\_\_\_  
Drilling commenced Jan., 25, 1915.  
Drilling completed Mar., 19, 1915.  
Date Shot \_\_\_\_\_ From \_\_\_\_\_ To \_\_\_\_\_  
With \_\_\_\_\_  
Open Flow /10ths Water in \_\_\_\_\_ Inch  
/10ths Merc. in \_\_\_\_\_ Inch  
Volume \_\_\_\_\_ Cu. Ft.  
Rock Pressure \_\_\_\_\_ lbs. \_\_\_\_\_ hrs.  
Oil \_\_\_\_\_ bbls., 1st 24 hrs.  
Fresh water \_\_\_\_\_ feet \_\_\_\_\_ feet  
Salt water \_\_\_\_\_ feet \_\_\_\_\_ feet

Casing and Tubing	Used in Drilling	Left in Well	Packers
Size			
16			Kind of Packer
13			
10	293'7"	Left	Size of
8 1/4	1107'11"	"	
6 5/8	2137'1"	"	Depth set
5 3/16	2967'2"	"	
3			Perf. top
2	3561'3"	"	Perf. bottom
Liners Used			Perf. top
			Perf. bottom

CASING CEMENTED \_\_\_\_\_ SIZE \_\_\_\_\_ No. Ft. \_\_\_\_\_ Date \_\_\_\_\_

COAL WAS ENCOUNTERED AT 897' FEET 106 INCHES  
FEET \_\_\_\_\_ INCHES FEET \_\_\_\_\_ INCHES  
FEET \_\_\_\_\_ INCHES FEET \_\_\_\_\_ INCHES

Formation	Color	Hard or Soft	Top	Bottom	Oil, Gas or Water	Depth Found	Remarks
Pittsburgh Coal			897'	906'	Gas	903'	
Dunkard Sand			1852'	1370'			
Gas Sand			1645'	1773'	Gas	1646'	
Injun Sand			2156'	2568'	Gas	1649'	
Fourth Sand			3022'	3032'	Gas	1770'	
Total Depth			<del>2999'</del>	3339'	Gas	3023'-25'	

