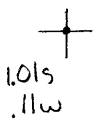


39°37'30"

Latitude

80°45'00"



Longitude

Topo Location

7.5' Loc. _____ 15' Loc. _____
(calc.) _____

Company Harnico G+D Co.

Farm Mary Smoggrass

15' Quad _____
(sec.)

7.5' Quad Porters Falls

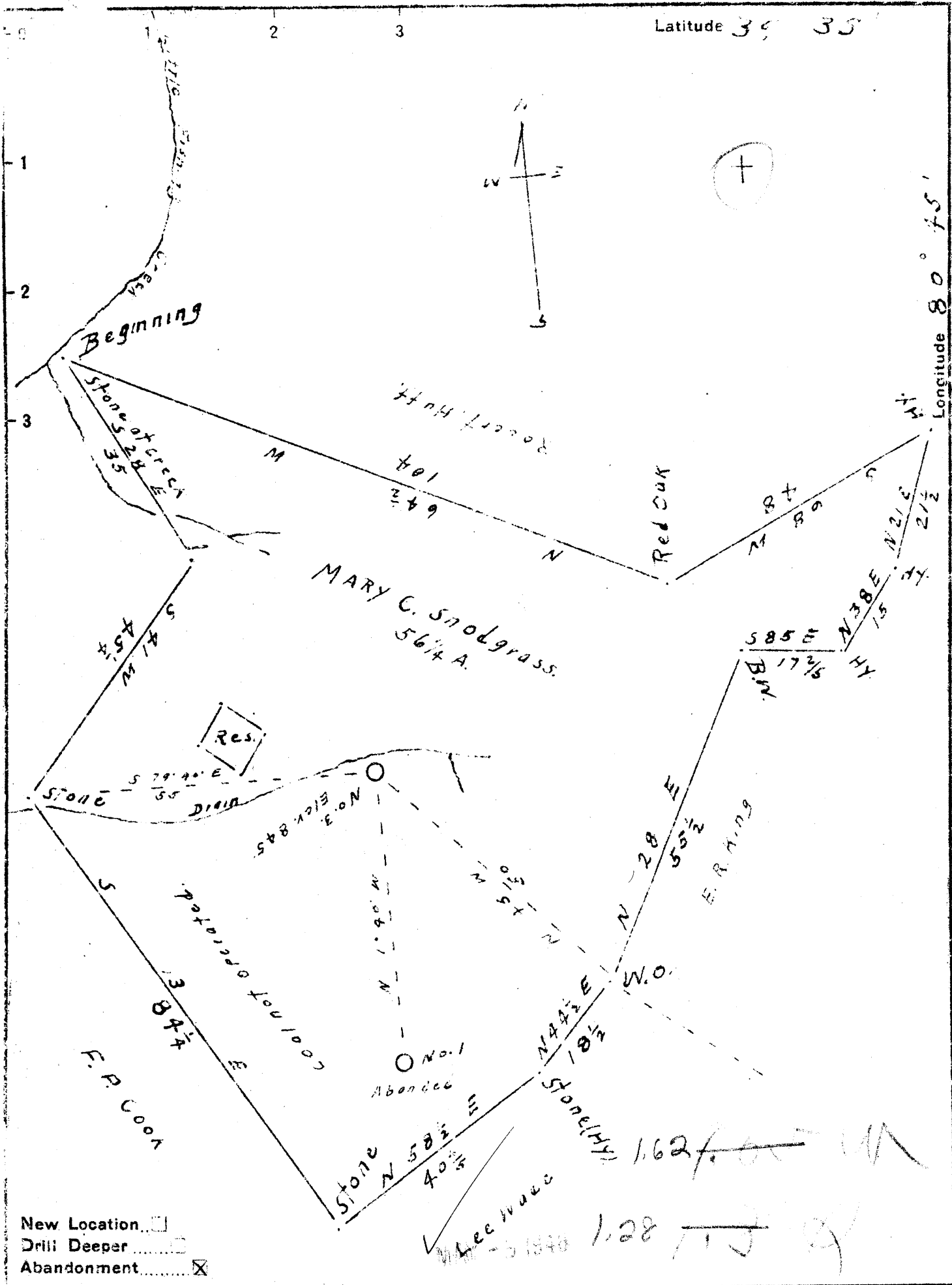
District Green

WELL LOCATION PLAT

County 103 Permit 666A

Latitude 39 35

Longitude 80 45



New Location
 Drill Deeper
 Abandonment

Company HAMICO GAS & OIL CO.
 Address UNIONTOWN PA.
 Farm MARY C. Snodgrass
 Tract One Acres 56 1/4 Lease No. _____
 Well (Farm) No. 3 Serial No. _____
 Elevation (Spirit Level) 845 Feet
 Quadrangle New Martinsville
 County Netzel District Green
 Engineer J. M. Cochran
 Engineer's Registration No. Co. Surveyor
 File No. _____ Drawing No. _____
 Date 4-16-1948 Scale 1" = 20 Rods

STATE OF WEST VIRGINIA
 DEPARTMENT OF MINES
 OIL AND GAS DIVISION
 CHARLESTON

WELL LOCATION MAP
 FILE NO. WET-661-A

+ Denotes location of well on United States Topographic Maps, scale 1 to 62,500, latitude and longitude lines being represented by border lines as shown.

- Denotes one inch spaces on border line of original tracing.

