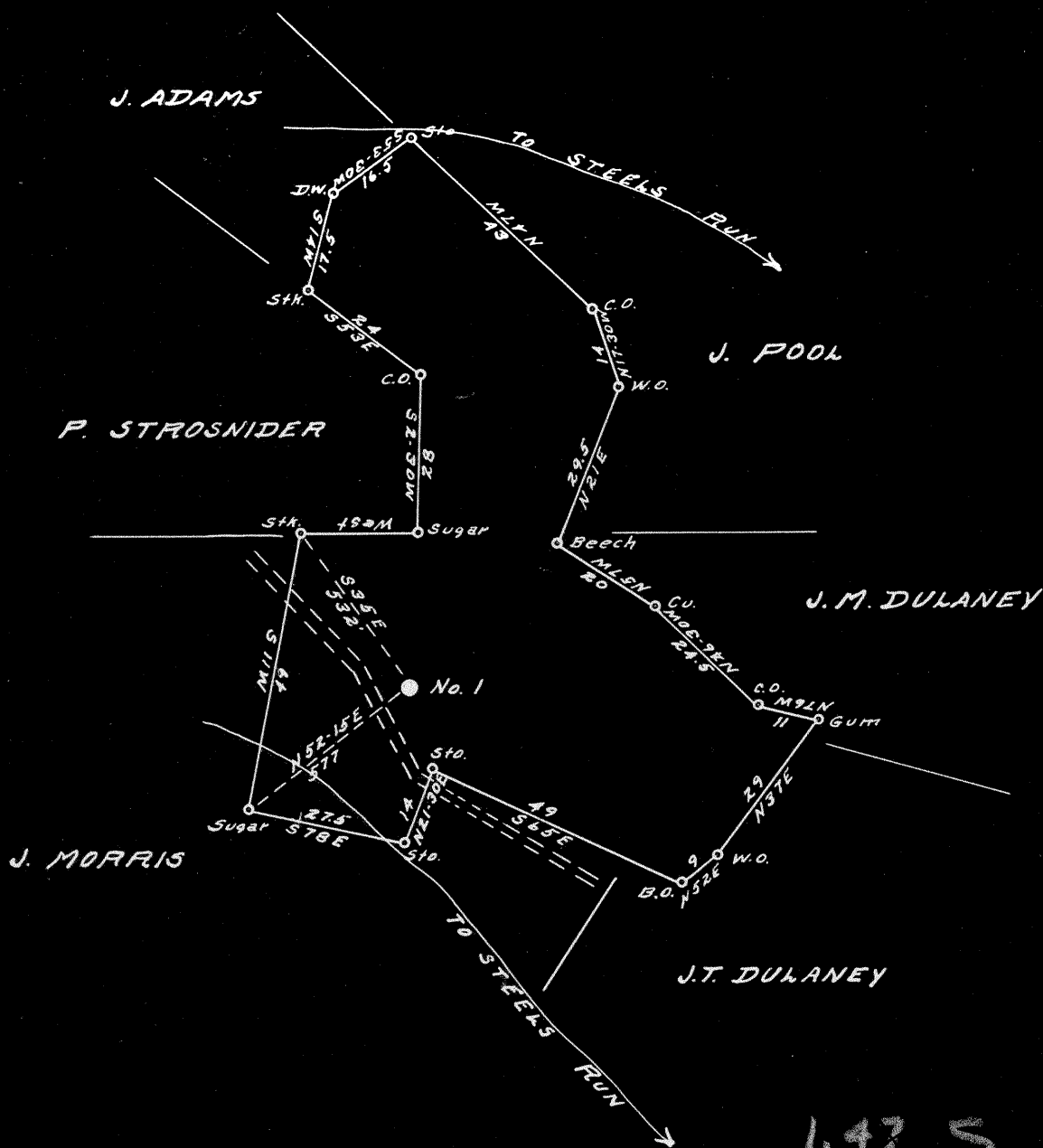


Latitude 39° 40'

Longitude 80° 35'



New Location   
 Drill Deeper   
 Abandonment

Company BRITTON & BERGE  
 Address VIENNA  
 Farm J.A. LEMASTERS  
 Tract \_\_\_\_\_ Acres 36 Lease No. C  
 Well (Farm) No. 1 Serial No. \_\_\_\_\_  
 Elevation (Spirit Level) 1323'  
 Quadrangle LITTLETON  
 County WETZEL District CENTER  
 Engineer Glen H. Huey  
 Engineer's Registration No. 2011  
 File No. \_\_\_\_\_ Drawing No. \_\_\_\_\_  
 Date 10-25-48 Scale 1"=30 FEET

STATE OF WEST VIRGINIA  
 DEPARTMENT OF MINES  
 OIL AND GAS DIVISION  
 CHARLESTON

**WELL LOCATION MAP**  
 FILE NO. Wet-769-A

+ Denotes location of well on United States Topographic Maps, scale 1 to 62,500, latitude and longitude lines being represented by border lines as shown.

- Denotes one inch spaces on border line of original tracing.

Latitude

Longitude

+  
148s  
-67w

Topo Location

7.5' Loc. \_\_\_\_\_ 15' Loc. \_\_\_\_\_  
\_\_\_\_\_ (calc.) \_\_\_\_\_

#107 MTW Co Rept 1909

Company South Penn

Farm J A Lemasters #1

15' Quad \_\_\_\_\_  
(sec.)

7.5' Quad Wilbyville

District Center

WELL LOCATION PLAT

County 103 Permit 70394

Center District, Wetzel County, W. Va.  
By South Penn Oil Co.  
2.1 miles northeast of Wileyville.  
Elevation, 1255' B.  
Completed Oct. 20, 1903.  
15-bbl. well.

WET-769-A

	Top.	Bottom.
Native coal (Waynesburg)	791	- 795
Pittsburgh Coal	1100	- 1105
Dunkard Sand	1580	- 1660
Salt Sand	1915	- 1955
Maxton Sand	2135	- 2145
Pencil Cove	2243	- 2253
Big Lime	2253	- 2310
Big Injun Sand	2310	- 2535
Stray Sand (gas and oil, 3134')	3132	- 3157