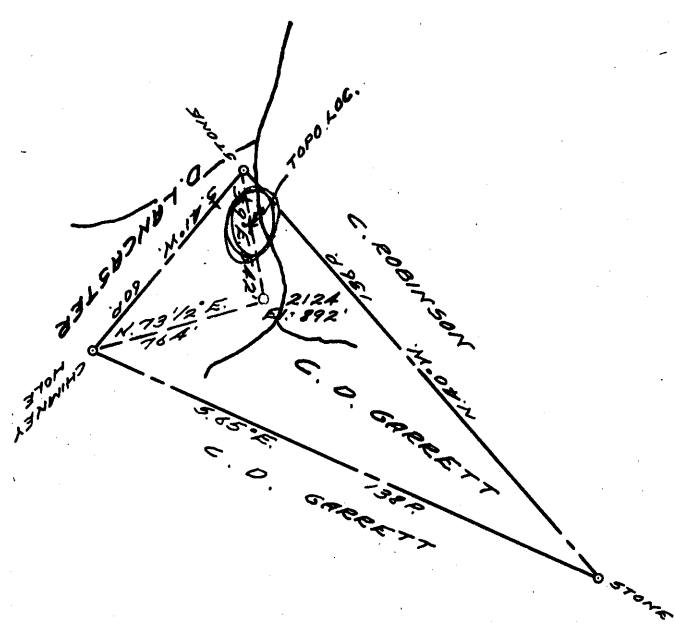


0 1 2 3 LATITUDE 3 0 35 1

1  
2  
3 LONGITUDE 80 0 40



4,04  
 H W  
 Y. D. J  
 3,98  
 P-25-26

COAL OWNED BY \_\_\_\_\_

NEW LOCATION.....

DRILL DEEPER.....

ABANDONMENT.....

~~21 1960~~

COMPANY THE MANUFACTURERS LIGHT & HEAT

ADDRESS 800 UNION TRUST BLDG. PGH. PA.

FARM C. D. GARRETT

TRACT \_\_\_\_\_ ACRES 25 LEASE No. 5046

WELL (FARM) No. 1 SERIAL No. 2124

ELEVATION (SPIRIT LEVEL) 892'

QUADRANGLE LITTLETON

COUNTY WETZEL DISTRICT GREEN

ENGINEER Robert M. Heall

ENGINEER'S REGISTRATION No. 361-E (David Clark)

FILE No. \_\_\_\_\_ DRAWING No. Y-25-185

DATE 5-24-60 SCALE 1" = 800'

STATE OF WEST VIRGINIA  
 DEPARTMENT OF MINES  
 OIL AND GAS DIVISION  
 CHARLESTON

**WELL LOCATION MAP**

File No. WET-1115-A

+ DENOTES LOCATION OF WELL ON UNITED STATES TOPOGRAPHIC MAPS, SCALE 1 TO 62,500. LATITUDE AND LONGITUDE LINES BEING REPRESENTED BY BORDER LINES AS SHOWN.

- DENOTES ONE INCH SPACES ON BORDER LINE OF ORIGINAL TRACING.

C. D. GARRETT No. 1 (2124) - M, L. & H. Co. - WET-1115-A



STATE OF WEST VIRGINIA  
DEPARTMENT OF MINES  
OIL AND GAS DIVISION

1576

Quadrangle Littleton

Permit No. 1165-A

WELL RECORD

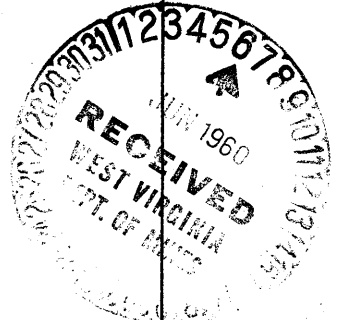
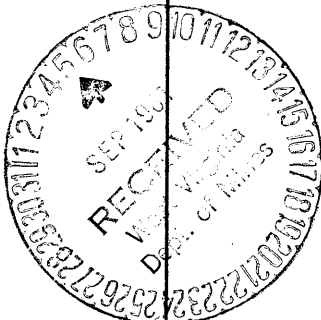
Oil or Gas Well GAS  
(KIND)

Company The Manufacturers Light and Heat Company  
Address 800 Union Trust Bldg., Pittsburgh 19, Pa.  
Farm C. D. Garrett, et al Acres 25  
Location (waters) \_\_\_\_\_  
Well No. L-2124 Elev. 892  
District Green County Wetzel  
The surface of tract is owned in fee by \_\_\_\_\_  
Address \_\_\_\_\_  
Mineral rights are owned by \_\_\_\_\_  
Address \_\_\_\_\_  
Drilling commenced July 11, 1917  
Drilling completed August 31, 1917  
Date Shot \_\_\_\_\_ From \_\_\_\_\_ To \_\_\_\_\_  
With \_\_\_\_\_  
Open Flow \_\_\_\_\_ /10ths Water in \_\_\_\_\_ Inch  
\_\_\_\_\_ /10ths Merc. in \_\_\_\_\_ Inch  
Volume \_\_\_\_\_ Cu. Ft.  
Rock Pressure \_\_\_\_\_ lbs. \_\_\_\_\_ hrs.  
Oil \_\_\_\_\_ bbls., 1st 24 hrs.  
Fresh water \_\_\_\_\_ feet  
Salt water \_\_\_\_\_ feet

Casing and Tubing	Used in Drilling	Left in Well	Packers
Size			
16			Kind of Packer
13			
10 "	180'	180'	Size of
8 1/4 "	1185'	1185'	
6 5/8 "	1765'	1765'	Depth set <u>2547</u>
5 3/16 "	2131'	2131'	
3			Perf. top
2			Perf. bottom
Liners Used			Perf. top
			Perf. bottom

CASING CEMENTED \_\_\_\_\_ SIZE \_\_\_\_\_ No. Ft. \_\_\_\_\_ Date \_\_\_\_\_  
COAL WAS ENCOUNTERED AT 580 FEET \_\_\_\_\_ INCHES  
\_\_\_\_\_ FEET \_\_\_\_\_ INCHES FEET \_\_\_\_\_ INCHES  
\_\_\_\_\_ FEET \_\_\_\_\_ INCHES FEET \_\_\_\_\_ INCHES

Formation	Color	THICKNESS	Top	Bottom	Oil, Gas or Water	Depth Found	Remarks
Pittsburgh Coal		5	580	585			
Maxon Sand		35	1180	1215			
First Salt Sand		30	1420	1450			
Second Salt Sand		75	1530	1605	Water at 1540 to 1545 (3 B. Hour)		
Little Lime		15	1720	1735			
Pencil Cave		10	1735	1745			
Big Lime		65	1745	1810			
Big Injun Sand		257	1810	2067	Gas at 1820 to 1840 - Water 1930' (1 B.-Hour)		
Red Rock		30	2535	2565			
Lime		10	2565	2575			
Gordon Sand		24	2628	2652			
Gas			2630	2633			
TOTAL DEPTH			2655				



APR 6 1962

Formation	Color	Hard or Soft	Top	Bottom	Oil, Gas or Water	Depth Found	Remarks

Date June 2, 19 60

APPROVED THE MANUFACTURERS LIGHT AND HEAT CO., Owner

By *Walter A. ...*  
Land Agent *(Signature)*