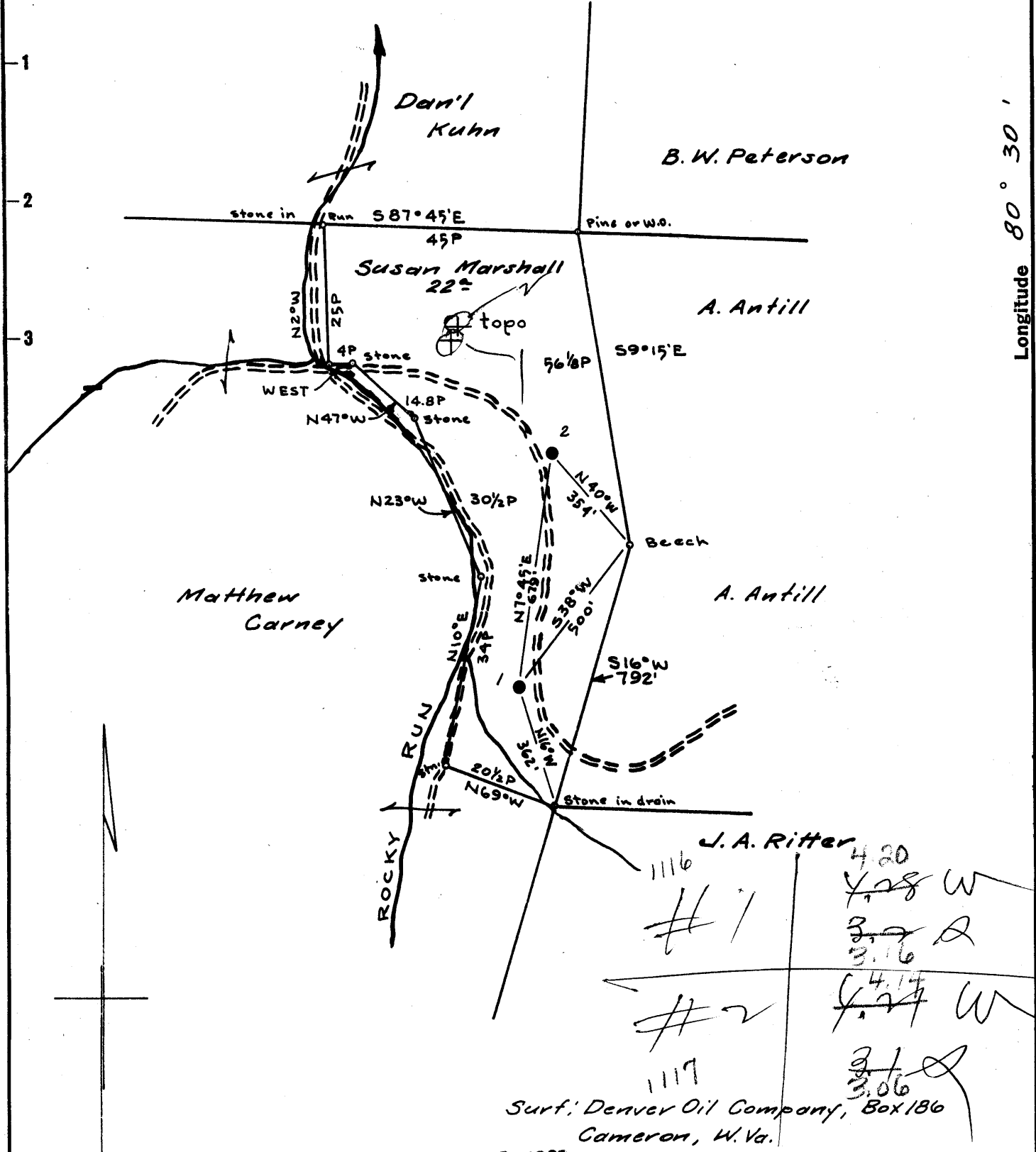


Latitude 39° 45'

Longitude 80° 30'



1116	4.20
#1	4.28 W
	3.77 A
	3.76
#2	4.17
	4.27 W
1117	3.1
	3.06

Surf: Denver Oil Company, Box 186
Cameron, W. Va.
Coal: Hanna Coal Co., Box 388
Moundsville, W. Va.

SEP 19 1960

Map N88 N18 E4

New Location
 Drill Deeper
 Abandonment

Company SOUTH PENN OIL CO.
 Address PARKERSBURG, W.VA.
 Farm SUSAN MARSHALL
 Tract _____ Acres 22 Lease No. 81422
 Well (Farm) No. 1 f 2 Serial No. _____
 Elevation (Spirit Level) (1) 1065.01 c.h. (2) 1043.00 c.h.
 Quadrangle LITTLETON
 County WETZEL District CENTER
 Engineer A.C. Killent
 Engineer's Registration No. 2534
 File No. 1330 Drawing By James B. Ripper Engineering Aide
 Date Aug. 24, 1960 Scale 1" = 400'

STATE OF WEST VIRGINIA
 DEPARTMENT OF MINES
 OIL AND GAS DIVISION
 CHARLESTON

WELL LOCATION MAP

FILE NO. WET-1116-A #1
WET-1117-A #2 *dup 2nd*

+ Denotes location of well on United States Topographic Maps, scale 1 to 62,500, latitude and longitude lines being represented by border lines as shown.

- Denotes one inch spaces on border line of original tracing.