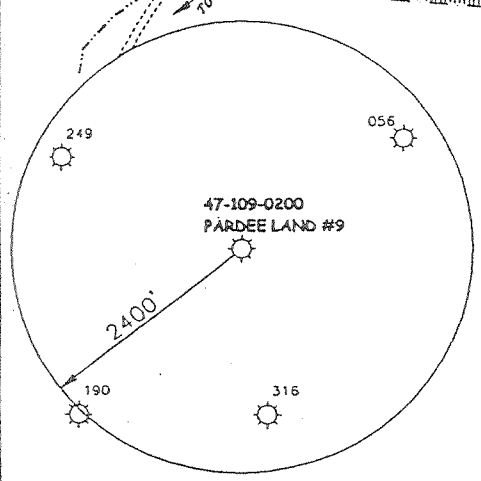
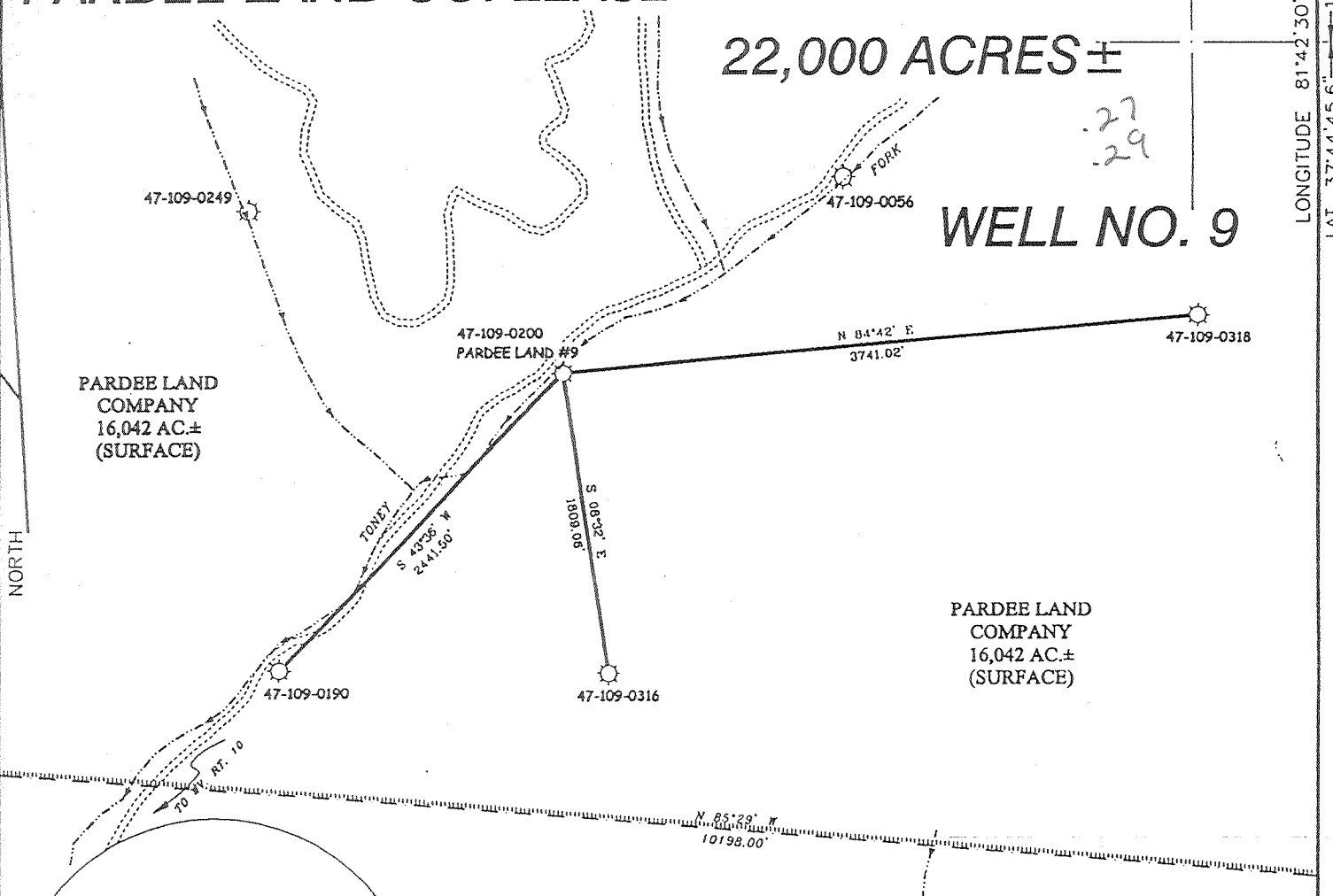


# PARDEE LAND CO. LEASE

22,000 ACRES ±

WELL NO. 9



N/F  
P.C. COOK et al

47-109-0200  
WELL NO. 9  
STATE PLANE  
COORDINATES

(N) 272,430  
(E) 1,793,718

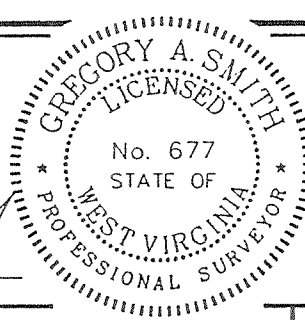
### NOTES ON SURVEY

1. TIES TO WELLS ARE BASED ON STATE PLANE GRID NORTH WV SOUTH ZONE NAD '27.
2. LEASE BOUNDARY TAKEN FROM A PLAT DATED 5/16/47 AS PREPARED BY E.G. WITHROW FOR API NO. 47-109-0200.
3. SURFACE OWNER AND ADJOINER INFORMATION TAKEN FROM THE ASSESSOR AND COUNTY CLERK RECORDS OF WYOMING COUNTY IN JANUARY, 1999.
4. WELL LAT./LONG. ESTABLISHED BY DGPS(SUBMETER MAPPING GRADE).



I THE UNDERSIGNED, HEREBY CERTIFY THAT THIS PLAT IS CORRECT TO THE BEST OF MY KNOWLEDGE AND BELIEF AND SHOWS ALL THE INFORMATION REQUIRED BY LAW AND THE REGULATIONS ISSUED AND PRESCRIBED BY THE DEPARTMENT OF ENERGY.

P.S. 677 *Gregory A. Smith*



(+) DENOTES LOCATION OF WELL ON UNITED STATES TOPOGRAPHIC MAPS.  
 DATE FEBRUARY 29, 2000  
 OPERATORS WELL NO. PARDEE LAND #9  
 API WELL NO. 47-109-0200D  
 STATE COUNTY PERMIT

MINIMUM DEGREE OF ACCURACY 1 / 2500 FILE NO. 3906P9 (84-60)  
 PROVEN SOURCE OF ELEVATION BENCH MARK ELEVATION 1046' SCALE 1" = 1000'

STATE OF WEST VIRGINIA  
 DIVISION OF ENVIRONMENTAL PROTECTION  
 OFFICE OF OIL AND GAS

WELL TYPE : OIL  GAS  LIQUID INJECTION  WASTE DISPOSAL  IF "GAS" PRODUCTION  STORAGE  DEEP  SHALLOW

LOCATION :  
 ELEVATION 1227' WATERSHED TONY FORK OF HUFF CREEK  
 DISTRICT OCEANA COUNTY WYOMING QUADRANGLE OCEANA 7.5'

SURFACE OWNER PARDEE LAND COMPANY ACREAGE 16,042  
 ROYALTY OWNER PARDEE LAND COMPANY LEASE ACREAGE 22,000  
 PROPOSED WORK : LEASE NO. 4107  
 DRILL  CONVERT  DRILL DEEPER  REDRILL  FRACTURE OR STIMULATE  PLUG OFF OLD FORMATION  PERFORATE NEW FORMATION  PLUG AND ABANDON  CLEAN OUT AND REPLUG  OTHER

PHYSICAL CHANGE IN WELL (SPECIFY) \_\_\_\_\_ TARGET FORMATION DEVONIAN SHALE  
 ESTIMATED DEPTH 5700'

WELL OPERATOR EASTERN STATES OIL AND GAS, INC. DESIGNATED AGENT ROBERT ALLEY  
 ADDRESS P.O. BOX 2347 CHARLESTON, WV 25328 ADDRESS P.O. BOX 2347 CHARLESTON, WV 25328



Pardee Land Company

Creek

Longitude 81 40

Huff Loc. No. 9

2493.0'

3917.0'

22,000 Acres

N 50-33 E

Fork

N 44-36 E

S 85-29 E

10198'

445  
248W

Perry C. Cook et al

- New Location X
- Drill Deeper
- Abandonment

Company United Producing Co. Inc.  
 Address Charleston, W. Va.  
 Farm Pardee Land Company  
 Tract \_\_\_\_\_ Acres 22,000 Lease No. 4107  
 Well (Farm) No. 9 Serial No. 1453  
 Elevation (Spirit Level) 1204.7'  
 Quadrangle Pineville (N.W.)  
 County Wyoming District Oceana  
 Engineer C. B. Withrow  
 Engineer's Registration No. \_\_\_\_\_  
 File No. \_\_\_\_\_ Drawing No. \_\_\_\_\_  
 Date May 16, 1947 Scale 1" = 660'

STATE OF WEST VIRGINIA  
 DEPARTMENT OF MINES  
 OIL AND GAS DIVISION  
 CHARLESTON

WELL LOCATION MAP  
 FILE NO. Wyo-200 #9

+ Denotes location of well on United States Topographic Maps, scale 1 to 62,500, latitude and longitude lines being represented by border lines as shown.

- Denotes one inch spaces on border line of original tracing.

6-6-166

WEST VIRGINIA DEPARTMENT OF MINES  
OIL & GAS DIVISION  
W E L L R E C O R D

Permit No. Wyo 200  
Pineville Quad.

Gas Well  
CASING & TUBING

Company	United Producing Company, Inc.			
Address	Box 1913, Charleston 27, W.Va.	13 3/8	33	33
Farm	Pardee Land Company A 22,000	10 1/2	510	510
Location	Toney Fork of Huff Creek	8 5/8	1760	1760
Well No.	9 (1453) Elev. 1206.53'	7 OD	2044	2044
District	Oceana Wyoming County	2 3/8	2044	2044
Surface	Pardee Land Co. 508 Thompson Bldg. Pottsville, Penna.			Oil Well Anchor Packer Size
Mineral	Same			Depth 1930'
Commenced	May 28, 1947			Perf. top 2034'
Completed	Sept. 7, 1947			" bot 2044'
Not shot				
Open flow	21/10ths W in 2" 8/10ths M in 3"			Casing cemented: 8 5/8" 56 8-24-47
Volume	195,000 C.F. & 989,000 C.F.			Coal at 49' 36"; 93' 24" 136' 36"; 283' 36"
Rock Pressure	655 lbs. 24 hrs.			
Fresh Water	36' H.F.			
Salt Water	1958-1968			

Surface	0	4	Lime	1636	1728
Gravel	4	15	Slate	1728	1740
Slate	15	24	Red Rock	1740	1751
Sand	24	34	Sand	1751	1812
Slate	34	38	Red Rock	1812	1825
Sand Broken	38	49	Lime	1825	1849
Coal	49	52	Slate & Shells	1849	1874
Slate	52	56	Maxon Sand	1874	1986
Shell Dark	56	72	Lime Black	1986	2009
Sand	72	93	Slate & Shells	2009	2020
Coal	93	95	Sand	2020	2033
Slate & Shells	95	136	Lime Red	2033	2042
Coal	136	139	Lime Blue	2042	2044
Slate	139	195	Total Depth		2044
Sand	195	219			
Slate	219	224	Gas 1769' show		
Sand	224	245	Gas 1910' show		
Slate	245	259	Has 1910-1920 298 MCF		
Sand	259	269	Gas 1929' 269 MCF		
Slate	269	283	Gas 2025' 1,107 MCF		
Coal	283	286			
Slate	286	292			
Sand	292	332			
Slate	332	380			
Sand	380	477			
Slate & Shells	477	507			
Sand	507	577			
Slate & Shells	577	628			
Sand	628	668			
Slate & Shells	668	688			
Sand	688	703			
Slate	703	745			
Sand	745	760			
Slate	760	764			
Sand	764	965	Gas 798' show		
Slate & Shells	965	990	Gas 905' show		
Sand	990	1132			
Slate & Shells	1132	1155			
Sand	1155	1262			
Slate & Shells	1262	1282			
Sand	1282	1335			
Lime	1335	1400			
Sand	1400	1470			
Slate & Shells	1470	1496			
Red Rock	1496	1500			
Slate & Shells	1500	1522			
Sand	1522	1552			
Slate & Shells	1552	1630			
Lime	1630	1646			
Slate & Shells	1646	1686			

State of West Virginia  
Division of Environmental Protection  
Section of Oil and Gas

*Handwritten signature*

Well Operator's Report of Well Work

Farm Name: Parde Land Co Operator Well No.: Pardee 9 DD

LOCATION: Elevation: 1,227.00 Quadrangle: Oceana  
District: Oceana County: Wyoming

Latitude: 1400 Feet South of Deg. 37 Minutes 45 Seconds 0  
Longitude: 1500 Feet West of Deg. 81 Minutes 42 Seconds 48.3

Company: EASTERN STATES OIL & GAS, INC.  
P.O. Box 2347, 1710 Pennsylvania Avenue  
Charleston, WV 25328

Agent: ROBERT ALLEY

Inspector: Ofie Helmick  
Permit Issued: 3/27/00  
Well work commenced: 01/03/01  
Well work completed: 01/22/01

Verbal Plugging Permission granted on: \_\_\_\_\_

Rotary Rig X Cable Rig \_\_\_\_\_

Total Depth 5605 feet \_\_\_\_\_

Fresh water depths (ft) \_\_\_\_\_

Salt water depths (ft) \_\_\_\_\_

Is coal being mined in area? \_\_\_\_\_

Coal Depths (ft): \_\_\_\_\_

Casing & Tubing Size	Used in Drilling	Left in Well	Cement Fill Up Cu. Ft.
4-1/2"	5592'	5592'	446 FT <sup>3</sup>

Stamp: FEB 22 2001  
Division of Environmental Protection

OPEN FLOW DATA

Producing formation L. Shale/U. Shale/Berea/Big Lime Pay Zone Depth (ft): \_\_\_\_\_ See Attach for details

Gas: Initial open flow 84 Bbl/d  
Final open flow 1210 Final open flow: \_\_\_\_\_  
Time of open flow between initial and final tests \_\_\_\_\_ Hours

Static rock pressure 325 psig (surface pressure) after \_\_\_\_\_ Hours

Second producing formation \_\_\_\_\_ Pay Zone Depth (ft): \_\_\_\_\_

Gas: Initial open flow \_\_\_\_\_ MCF/d Oil: Initial open flow \_\_\_\_\_ Bbl/d  
Final open flow: \_\_\_\_\_ MCF/d Final open flow: \_\_\_\_\_  
Time of open flow between initial and final tests \_\_\_\_\_ Hours

Static rock pressure \_\_\_\_\_ psig (surface pressure) after \_\_\_\_\_ Hours

NOTE: ON BACK OF THIS FORM PUT THE FOLLOWING: 1) DETAILS OF PERFORATED INTERVALS, FRACTURING OR STIMULATING, PHYSICAL CHANGE, ETC. 2) THE WELL LOG WHICH IS A SYSTEMATIC DETAILED GEOLOGICAL RECORD OF ALL FORMATIONS, INCLUDING COAL ENCOUNTERED BY THE WELLBORE.

For: BLAZER ENERGY CORPORATION

By: *Robert J. King*  
Date: 2/14/01

MAR 02 2001

WV D 0200 D

*SEE P well*

**EASTERN STATES OIL & GAS, INC.**  
**WR-35 COMPLETION REPORT - Attachment**  
**Well Treatment Summary**

Well: Pardee Land Co 9 DD

API# 47-109-00200 DD

Date	1/19/01	1/19/01	1/19/01	1/19/01		
Type Frac						
Acid, N <sub>2</sub> , Foam, Water	N <sup>2</sup>	N <sup>2</sup>	N <sup>2</sup>	Acid/N <sup>2</sup>		
Zone Treated	L. Shale	U. Shale	Berea	Big Lime		
# Perfs	40	30	21	31		
From - To:	4524-5527	3552-4391	3244-3264	2556-2718		
BD Pressure @ psi	3118	2835	2907	1526		
ATP psi	3132	2942	2575	1191		
Avg. Rate, B=B/M, S= SCF/M	52418 S	50507 S	54978 S	11154 S		
Max. Treat Press psi	3300	4297	2907	3121		
ISIP psi	2530	3239	1710	758		
	Final	Final	Final			
Frac Gradient	.60	.94	.59	.75		
10 min S-I Pressure	1897	1417	1079	1196		
	5 min	5 min	5 min	10 min		
Material Volume						
Sand-sks						
Water-bbl		2	1	2.5		
SCF N <sub>2</sub>	955,193	648,972	581,785	66,045		
Acid-gal	900 gal	750 gal	350 gal	3000 gal		
	7.7%	7.7%	7.5%	15%		
NOTES:						

FEB 22 2001  
 WV Division of  
 Environmental Protection

TOP	BOTTOM	FORMATION	REMARKS
0	2056		PREVIOUSLY REPORTED
2056	2120	Red Rock	GT @ 2056', 2349', 2505', 2600'=NS
2120		Sand & Shale	
2262	2270	L Maxton	
2270	2307	Sand & Shale	
2307	2407	L Lime	
2407	2750	Big Lime	GT @ 2725', 2820'=84 mcf/d
2750	2792	Injun	
2792	2900	Weir	
2900	3210	Sand & Shale	GT @ 2976', 3100'=103 mcf/d
3210	3236	Sunbury Shale	
3236	3278	Berea	
3278	3560	U Huron	GT @ 3287', 3730', 4487', 4927', 5179'=84 mcf/d
3560	3604	Gordon	
3604	4360	U Huron	
4360	4900	L Huron	
4900	5040	Java	
5040	5285	Angola	
5285	5600	Rhinestreet	
5600	5605	Onondaga	GT @ TD=84 mcf/d

10% 2 9 94