

W.M. RITTER LUMBER COMPANY LEASE

65,000 ACRES ±

1.43
1.52

WELL NO. 312

47-109-0852

N 87°04' W 4867.80'

47-109-0675

N 66°14' W
1903.59'

CLEAR FORK
HUFF CREEK

GEORGIA-PACIFIC CORPORATION
1,899.21 AC.±
(SURFACE)

GEORGIA-PACIFIC CORPORATION
1,899.21 AC.±
(SURFACE)

GEORGIA-PACIFIC CORPORATION
10 AC.±

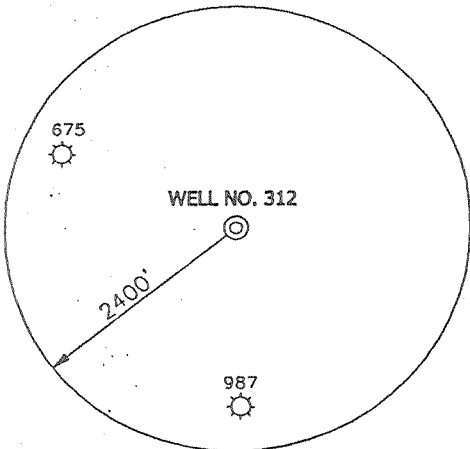
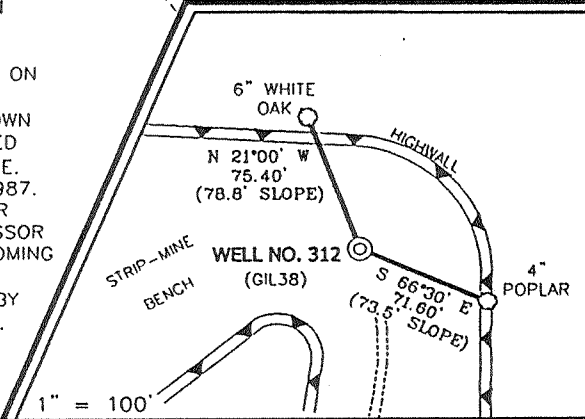
WELL NO. 312
STATE PLANE
COORDINATES

(N) 211,105
(E) 1,774,604

NOTES ON SURVEY

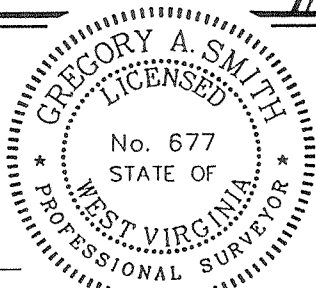
1. TIES TO WELLS ARE BASED ON STATE PLANE GRID NORTH WV SOUTH ZONE NAD '27.
2. TIES TO REFERENCES ARE BASED ON MAGNETIC NORTH 3/11/99.
3. THE ONLY LEASE BOUNDARY SHOWN HEREON TAKEN FROM A PLAT DATED 7/08/85 AS PREPARED BY DAVID E. JACKSON FOR A.P.I. NO. 47-109-0987.
4. SURFACE OWNER AND ADJOINER INFORMATION TAKEN FROM THE ASSESSOR AND COUNTY CLERK RECORDS OF WYOMING COUNTY IN MARCH, 1999.
5. WELL LAT./LONG. ESTABLISHED BY DGPS(SUBMETER MAPPING GRADE).

REFERENCES



I THE UNDERSIGNED, HEREBY CERTIFY THAT THIS PLAT IS CORRECT TO THE BEST OF MY KNOWLEDGE AND BELIEF AND SHOWS ALL THE INFORMATION REQUIRED BY LAW AND THE REGULATIONS ISSUED AND PRESCRIBED BY THE DEPARTMENT OF ENERGY.

P.S. 677 Gregory A. Smith



(+) DENOTES LOCATION OF WELL ON UNITED STATES TOPOGRAPHIC MAPS.

DATE APRIL 6, 19 99

OPERATORS WELL NO. RITTER NO. 312

API WELL NO. 47-109-01809
STATE COUNTY PERMIT

MINIMUM DEGREE OF ACCURACY 1 / 2500 FILE NO. 3999P312 (76-32)
PROVEN SOURCE OF ELEVATION JUNCTION OF ROADS ELEVATION 1255' SCALE 1" = 800'

STATE OF WEST VIRGINIA
DIVISION OF ENVIRONMENTAL PROTECTION
OFFICE OF OIL AND GAS



WELL TYPE : OIL GAS LIQUID INJECTION WASTE DISPOSAL IF "GAS" PRODUCTION STORAGE DEEP SHALLOW

LOCATION :
ELEVATION 1589' WATERSHED NORTH SPRING BRANCH OF LITTLE HUFF CREEK
DISTRICT HUFF CREEK COUNTY WYOMING QUADRANGLE GILBERT 7.5'

SURFACE OWNER GEORGIA - PACIFIC CORPORATION ACREAGE 1,899.21
ROYALTY OWNER GEORGIA - PACIFIC CORPORATION LEASE ACREAGE 65,000
PROPOSED WORK : LEASE NO. 004157

DRILL CONVERT DRILL DEEPER REDRILL FRACTURE OR STIMULATE PLUG OFF OLD FORMATION PERFORATE NEW FORMATION PLUG AND ABANDON CLEAN OUT AND REPLUG OTHER

PHYSICAL CHANGE IN WELL (SPECIFY) _____ TARGET FORMATION DEVONIAN SHALE
ESTIMATED DEPTH 6200'

WELL OPERATOR BLAZER ENERGY CORPORATION DESIGNATED AGENT RICHARD SMELTZER
ADDRESS P.O. BOX 2347 CHARLESTON, WV 25328 ADDRESS P.O. BOX 2347 CHARLESTON, WV 25328

DSP Well

66 303

MAY 24 1999

WV
COUNTY NAME
PERMIT 1809

WR 35

17-May-99
API # 47-109-01809

State of West Virginia
Division of Environmental Protection
Section of Oil and Gas

WV

Well Operator's Report of Well Work

Farm Name: Georgia Pacific Corp. Operator Well No.: Ritter 312

LOCATION: Elevation: 1,589.00 Quadrangle: Gilbert
District: Huff Creek County: Wyoming
Latitude: 2270 Feet South of 37 Deg. 35 Min. 0 Sec.
Longitude: 8030 Feet West of 81 Deg. 45 Min. 0 Sec.

Company: BLAZER ENERGY CORPORATION
P.O. BOX 2347
CHARLESTON, WV 25328

Casing & Tubing Size	Used in Drilling	Left in Well	Cement Fill Up Cu. Ft.
13 3/8"	32'	32'	Grt'd
9 5/8"	462'	462'	183 Ft ³
7"	1827'	1827'	364 Ft ³
4 1/2"	6045'	6045'	471 Ft ³

Agent: Richard Smeltzer

Inspector: Ofie Helmick

Permit Issued: 5/17/99

Well work commenced: 5/24/99

Well work completed: 8/6/99

Verbal Plugging

Permission granted on:

Rotary Rig X Cable Rig

Total Depth 6080 feet

Fresh water depths (ft) 95

Salt water depths (ft) 1548

Is coal being mined in area?

Coal Depths (ft):

OPEN FLOW DATA

Producing formation L Dev Shale, M Dev Shale, U Dev Shale, Berea Pay Zone Depth (ft): See

Gas: Initial open flow 84 MCF/d Oil: Initial open flow Bbl/d Attached

Final open flow: 936 MCF/d Final open flow:

Time of open flow between initial and final tests Hours

Static rock pressure 680 psig (surface pressure) after Hours

Second producing formation Pay Zone Depth (ft):

Gas: Initial open flow MCF/d Oil: Initial open flow Bbl/d

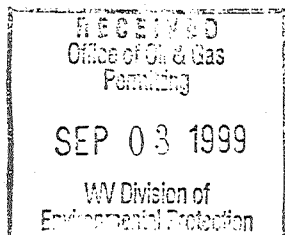
Final open flow: MCF/d Final open flow:

Time of open flow between initial and final tests Hours

Static rock pressure psig (surface pressure) after Hours

NOTE: ON BACK OF THIS FORM PUT THE FOLLOWING: 1) DETAILS OF PERFORATED INTERVALS, FRACTURING OR STIMULATING, PHYSICAL CHANGE, ETC. 2) THE WELL LOG WHICH IS A SYSTEMATIC DETAILED GEOLOGICAL RECORD OF ALL FORMATIONS, INCLUDING COAL ENCOUNTERED BY THE WELLBOF

For: BLAZER ENERGY CORPORATION



By: Barbara A. Hubbard / Admin
Date: 9-2-99

WYO 1809 609

SEP 7 1999

EASTERN STATES OIL & GAS, INC.
WR-35 COMPLETION REPORT - Attachment
Well Treatment Summary

Well: Ritter 312

API# 47-109-01809

Date	6-17-99	6-17-99	6-18-99	6-18-99		
Type Frac:						
Acid, N ₂ , Foam, Water	N ²	N ²	N ²	N ²		
Zone Treated	L Devonian Shale	M Devonian Shale	U Devonian Shale	Berea		
# Perfs	18	34	18	17		
From - To:	5736-5959	4400-5406	4203-4119	3849-3869		
BD Pressure @ psi	3547	3213	3213	2852		
ATP psi	2984	3166	2497	2039		
Avg. Rate, B=B/M, S= SCF/M	47,500 S	50,350 S	49,650 S	53,103 S		
Max. Treat Press psi	3967	4209	3896	2853		
ISIP psi	2943	3000	2352	1600		
Frac Gradient	.50	.61	.47	.41		
10 min S-I Pressure	1983	1826	1123	1230		
Material Volume:						
Sand-sks						
Water-bbl						
SCF N ₂	428,520	1,240,212	417,790	413,701		
Acid-gal	500 gal 7½%	1700 gal 7.4%	500 gal 7.15%	500 gal 7.15%		
NOTES:						

Formation Record

TOP	BOTTOM	FORMATION	Remarks
0	5	Fill	
5	85	Sand	
85	95	Sandy Shale	½" strm wtr @ 95'
95	510	Sand	Gt @ 492' - NS
510	692	Sand	
692	750	Shale	
750	863	Sand & Shale	
863	1703	Salt Sand	½" strm wtr @ 1548', GT @ 1684' - NS, GT @ 1920' - odor, GT @ 2127' - NS
2394	2489	Upper Maxton	Gt @ 2407', 2716' - All NS
2728	2754	Lower Maxton	
2792	2888	Little Lime	GT @ 2839' - NS
2911	3264	Big Lime	GT @ 3023' - NS, GT @ 3147', 3273' - All 59 mcf, GT @ 3675', 3796' - All 59 mcf
3379	3482	Weir	
3819	3842	Sunbury	
3842	3884	Berea	
3884	4925	Upper Huron	GT @ 4290', 4883' - All 178 mcf
4133	4162	Gordon	
4925	5426	Lower Huron	GT @ 5383' - 168 mcf
5426	5566	Java	
5566	5788	Angola	
5788	6065	Rhinestreet	GT @ 5850' - 168 mcf
6065		Onondaga	
6080		TD (Drillers)	GT @ TD - 84 mcf

