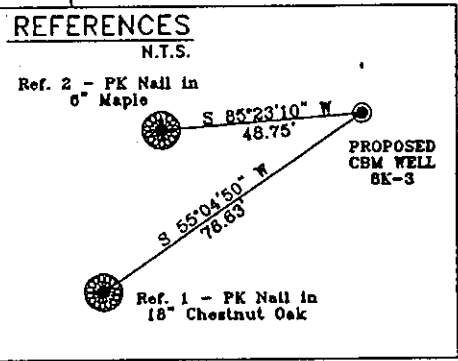
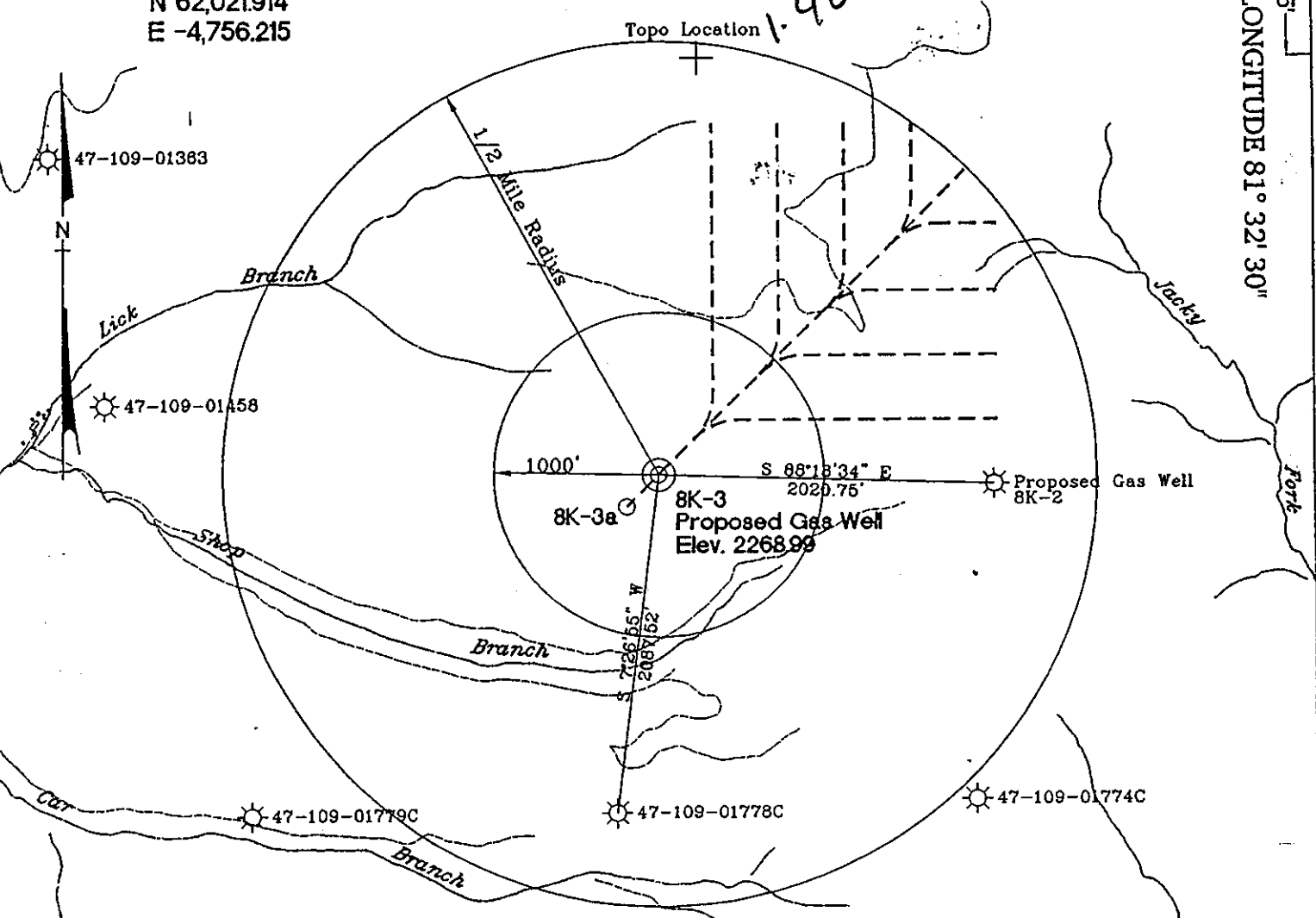


POCAHONTAS LAND COORDINATES

N 62,021,914  
E -4,756,215

7400'  
LATITUDE 37° 32' 30"

LONGITUDE 81° 32' 30"

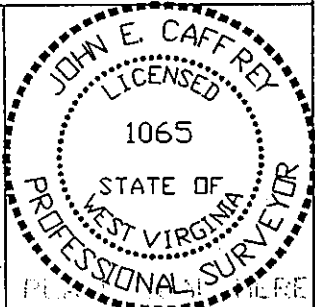


Notes:  
No known domestic water supplies within 1000 feet.  
(+) Denotes location of well on USGS map.

FILE No. CDX  
DRAWING NAME \PLAT\8K-3  
Drawing Number 990625/LL  
SCALE 1" = 1000'  
MINIMUM DEGREE OF ACCURACY 1:2500  
PROVEN SOURCE OF ELEVATION USGS B.M. F44  
EL. 1565

I THE UNDERSIGNED, HEREBY CERTIFY THAT THIS PLAT IS CORRECT TO THE BEST OF MY KNOWLEDGE AND BELIEF AND SHOWS ALL THE INFORMATION REQUIRED BY LAW AND THE REGULATIONS ISSUED AND PRESCRIBED BY THE DEPARTMENT OF MINES.

(SIGNED) [Signature]  
R.P.E. 1065



STATE OF WEST VIRGINIA  
DIVISION OF ENVIRONMENTAL PROTECTION  
OFFICE OF OIL AND GAS  
NITRO, WV

DATE June 25 19 99  
OPERATOR'S WELL No. 8K-3  
API WELL No. 47 - 109 - 01834 C

WELL TYPE: OIL  GAS  CBM  LIQUID INJECTION  WASTE DISPOSAL   
(IF "GAS") PRODUCTION  STORAGE  DEEP  SHALLOW

LOCATION: ELEVATION 2268.99 WATER SHED SHOP BRANCH OF LICK BRANCH OF INDIAN CREEK  
DISTRICT CENTER COUNTY WYOMING  
QUADRANGLE PINEVILLE, WV

SURFACE OWNER U.S. STEEL MINING COMPANY, LLC ACREAGE 37977.66  
CBM ROYALTY OWNER U.S. STEEL MINING COMPANY, LLC LEASE ACREAGE \_\_\_\_\_  
LEASE No. \_\_\_\_\_

PROPOSED WORK: DRILL  CONVERT  DRILL DEEPER  REDRILL  FRACTURE OR STIMULATE  PLUG OFF OLD FORMATION  PERFORATE NEW FORMATION  OTHER PHYSICAL CHANGE IN WELL (SPECIFY) \_\_\_\_\_

PLUG AND ABANDON  CLEAN OUT AND REPLUG

TARGET FORMATION POCAHONTAS NO. 3 & PENN. COALS ESTIMATED DEPTH 1455'  
WELL OPERATOR CDX GAS, LLC MANAGER JOSEPH ZUPANICK  
ADDRESS P.O. BOX 609 ADDRESS P.O. BOX 609  
PINEVILLE, WV 24874 PINEVILLE, WV 24874

ISEP 7 1999

WYO 1834-C

State of West Virginia  
Division of Environmental Protection  
Section of Oil & Gas

Approved ALB

Well Operator's Report of Well Work

Farm name: U.S. Steel Mining Company, LLC Operator Well No: 8K-3  
Location: Elevation: 2,266.17 Quadrangle: PINEVILLE  
District: CENTER County: WYOMING  
Latitude: 1725 Feet South of 37 Deg. 32 Min. 30 Sec.  
Longitude: 7400 Feet West of 81 Deg. 32 Min. 30 Sec.

Company: CDX Gas, LLC  
5485 BELTLINE ROAD, SUITE 280  
DALLAS, TX 75240-0000

Agent: JOSEPH A. ZUPANICK

Inspector: OFIE HELMICK  
Permit Issued: 09/01/99  
Well Work commenced: \*08/26/99  
Well Work completed: 09/26/99  
Verbal plugging  
Permission granted on:  
Rotary x Cable \_\_\_\_\_ Rig  
Total depth (ft) 1524.90  
Fresh water depths (ft) N/A  
Salt water depths (ft) N/A  
Is coal being mined in the area (Y/N)? Y  
Coal depths (ft): 52.5, 154, 227, 346, 686, 719, 1110, 1124, 1355, 1415, 1464

Casing & Tubing Size	Used in Drilling	Left in Well	Cement Fill up
13 5/8"	35'	35'	9
9 5/8"	1291.95'	1291.95'	405
7"	1460'	1460'	
2 7/8"	1464'	1464'	

RECEIVED  
220  
Officer of Public Safety  
Permitting  
NOV 03 2000  
WV Division of Environmental Protection

\*Borehole drilled under WVDEP Permit O-4010-97 and NPDES WV090000

OPEN FLOW DATA

Producing formation Pocahontas No. 3 Seam and Penn Coals Pay zone depth (ft) \_\_\_\_\_  
 Gas: Initial open flow N/A Mcf/d Oil: Initial open flow \_\_\_\_\_ Bbl/d  
 Final open flow N/A Mcf/d Final open flow \_\_\_\_\_ Bbl/d  
 Time of open flow between initial and final tests: \_\_\_\_\_ hours  
 Static rock pressure \_\_\_\_\_ psig (surface pressure) after \_\_\_\_\_ hours

Second Producing formation \_\_\_\_\_ Pay zone depth (ft) \_\_\_\_\_  
 Gas: Initial open flow N/A Mcf/d Oil: Initial open flow \_\_\_\_\_ Bbl/d  
 Final open flow N/A Mcf/d Final open flow \_\_\_\_\_ Bbl/d  
 Time of open flow between initial and final tests: \_\_\_\_\_ hours  
 Static rock pressure \_\_\_\_\_ psig (surface pressure) after \_\_\_\_\_ hours

Note: ON BACK OF THIS FORM, PUT THE FOLLOWING: 1) DETAILS OF PERFORATED INTERVALS, FRACTURING OR STIMULATING, PHYSICAL CHANGE, ETC. 2) THE WELL LOG WHICH IS A SYSTEMATICK DETAILED GEOLOGICAL RECORD OF ALL FORMATIONS, INCLUDING COAL ENCOUNTERED BY THE WELLBORE.

For: CDX Gas, LLC  
By: J. A. Zupanick  
Date: 10/9/00

NOV 23 2000

WYO 1834 C

Operator: 8K-3  
API No. 47-109-01834 C  
Location: Pineville

Details of Perforated Intervals, Fracturing or Stimulation, Physical Change, Etc.

Well Log & Geologic Record

Formation	Top	Bottom
Sandy Shale	0	52.5
Coal	52.5	53.5
Sandy Shale	53.5	88
Shale	88	154
Coal	154	156
Shale	156	208
Sandy Shale	208	224
Shale	224	227
Coal	227	228
Shale	228	236
Sandy Shale	236	346
Coal	346	348
Sandy Shale	348	365
Shale	365	387
Sandy Shale	387	394
Shale	394	403
Sandy Shale	403	411
Shale	411	417
Sandy Shale	417	470
Shale	470	480
Sandy Shale	480	682
Shale	682	686
Coal	686	687
Shale	687	702
Sandy Shale	702	713
Shale	713	719.5
Coal	719.5	722
Shale	722	731
Sandy Shale	731	796
Shale	796	805
Sandy Shale	805	1105
Shale	1105	1110
Coal	1110	1114

WYO 1834 C

1834 C

Operator: 8K-3  
API No. 47- 109-01834 C  
Location: Pineville

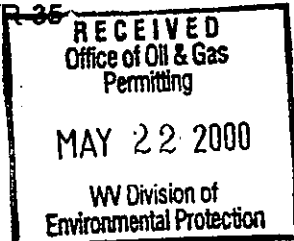
Details of Perforated Intervals, Fracturing or Stimulation, Physical Change, Etc.

Well Log & Geologic Record (continued)

Formation	Top	Bottom
Shale	1114	1124
Coal	1124	1126
Sandy Shale	1126	1232
Sandstone	1232	1310
Sand Shale	1310	1355
Coal	1355	1359
Sandy Shale	1359	1415
Coal	1415	1418
Sandy Shale	1418	1464
Coal	1464	1469
Sandy Shale	1469	1524.90

NOV 23 2000

WP-35



API # 47-109-01834 C

State of West Virginia  
Division of Environmental Protection  
Section of Oil & Gas

Reviewed [Signature]

Well Operator's Report of Well Work

Farm name: U.S. Steel Mining Company, LLC

Operator Well No: 8K-3

Location: Elevation: 2,266.17

Quadrangle: PINEVILLE

District: CENTER

County: WYOMING

Latitude: 1725 Feet South of 37 Deg. 32 Min. 30 Sec.  
Longitude: 7400 Feet West of 81 Deg. 32 Min. 30 Sec.

Company: CDX Gas, LLC  
5485 BELTLINE ROAD, SUITE 280  
DALLAS, TX 75240-0000

Agent: JOSEPH A. ZUPANICK

Inspector: OFIE HELMICK

Permit Issued: 09/01/99

Well Work commenced: 09/10/99

Well Work completed: 09/24/99

Verbal plugging

Permission granted on:

Rotary x Cable \_\_\_\_\_ Rig

Total depth (ft) 1524.90

Fresh water depths (ft) N/A

Salt water depths (ft) N/A

Is coal being mined in the area (Y/N)? Y

Coal depths (ft): 52.5, 154, 227, 346, 686, 719, 1110, 1124, 1355, 1415, 1464

Casing & Tubing Size	Used in Drilling	Left in Well	Cement Fill up
13 5/8"	35'	35'	9
9 5/8"	1291.95'	1291.95'	405
7"	1460'	1460'	220
2 7/8"	1464'	1464'	----

& NPDES WV0090000

OPEN FLOW DATA

Producing formation Pocahontas No. 3 Seam and PennCoals Pay zone depth (ft) \_\_\_\_\_  
 Gas: Initial open flow N/A Mcf/d Oil: Initial open flow \_\_\_\_\_ Bbl/d  
 Final open flow N/A Mcf/d Final open flow \_\_\_\_\_ Bbl/d  
 Time of open flow between initial and final tests: \_\_\_\_\_ hours  
 Static rock pressure \_\_\_\_\_ psig (surface pressure) after \_\_\_\_\_ hours

Second Producing formation \_\_\_\_\_ Pay zone depth (ft) \_\_\_\_\_  
 Gas: Initial open flow N/A Mcf/d Oil: Initial open flow \_\_\_\_\_ Bbl/d  
 Final open flow N/A Mcf/d Final open flow \_\_\_\_\_ Bbl/d  
 Time of open flow between initial and final tests: \_\_\_\_\_ hours  
 Static rock pressure \_\_\_\_\_ psig (surface pressure) after \_\_\_\_\_ hours

Note: ON BACK OF THIS FORM, PUT THE FOLLOWING: 1) DETAILS OF PERFORATED INTERVALS, FRACTURING OR STIMULATING, PHYSICAL CHANGE, ETC. 2) THE WELL LOG WHICH IS A SYSTEMATICK DETAILED GEOLOGICAL RECORD OF ALL FORMATIONS, INCLUDING COAL ENCOUNTERED BY THE WELLBORE.

For: CDX Gas, LLC  
 By: [Signature]  
 Date: 1/7/00

[Signature]  
5-16-00

JUN 9 2000

WYO 1834C

Operator: 8K-3  
 API No. 47- 109-01834 C  
 Location: Pineville

Details of Perforated Intervals, Fracturing or Stimulation, Physical Change, Etc.

Well Log & Geologic Record

Formation	Top	Bottom
Sandy Shale	0	52.5
Coal	52.5	53.5
Sandy Shale	53.5	<del>88</del>
Shale	88	154
Coal	154	156
Shale	156	208
Sandy Shale	208	224
Shale	224	227
Coal	227	228
Shale	228	236
Sandy Shale	236	346
Coal	346	348
Sandy Shale	348	365
Shale	365	387
Sandy Shale	387	394
Shale	394	403
Sandy Shale	403	411
Shale	411	417
Sandy Shale	417	470
Shale	470	480
Sandy Shale	480	682
Shale	682	686
Coal	686	687
Shale	687	702
Sandy Shale	702	713
Shale	713	719.5
Coal	719.5	722
Shale	722	731
Sandy Shale	731	796
Shale	796	805
Sandy Shale	805	1105
Shale	1105	1110
Coal	1110	1114

Formation	Top	Bottom
Shale	1114	1124
Coal	1124	1126
Sandy Shale	1126	1232
Sandstone	1232	1310
Sand Shale	1310	1355
Coal	1355	1359
Sandy Shale	1359	1415
Coal	1415	1418
Sandy Shale	1418	1464
Coal	1464	1469
Sandy Shale	1469	1524.90

WYO 1834C

JUN 9 2000