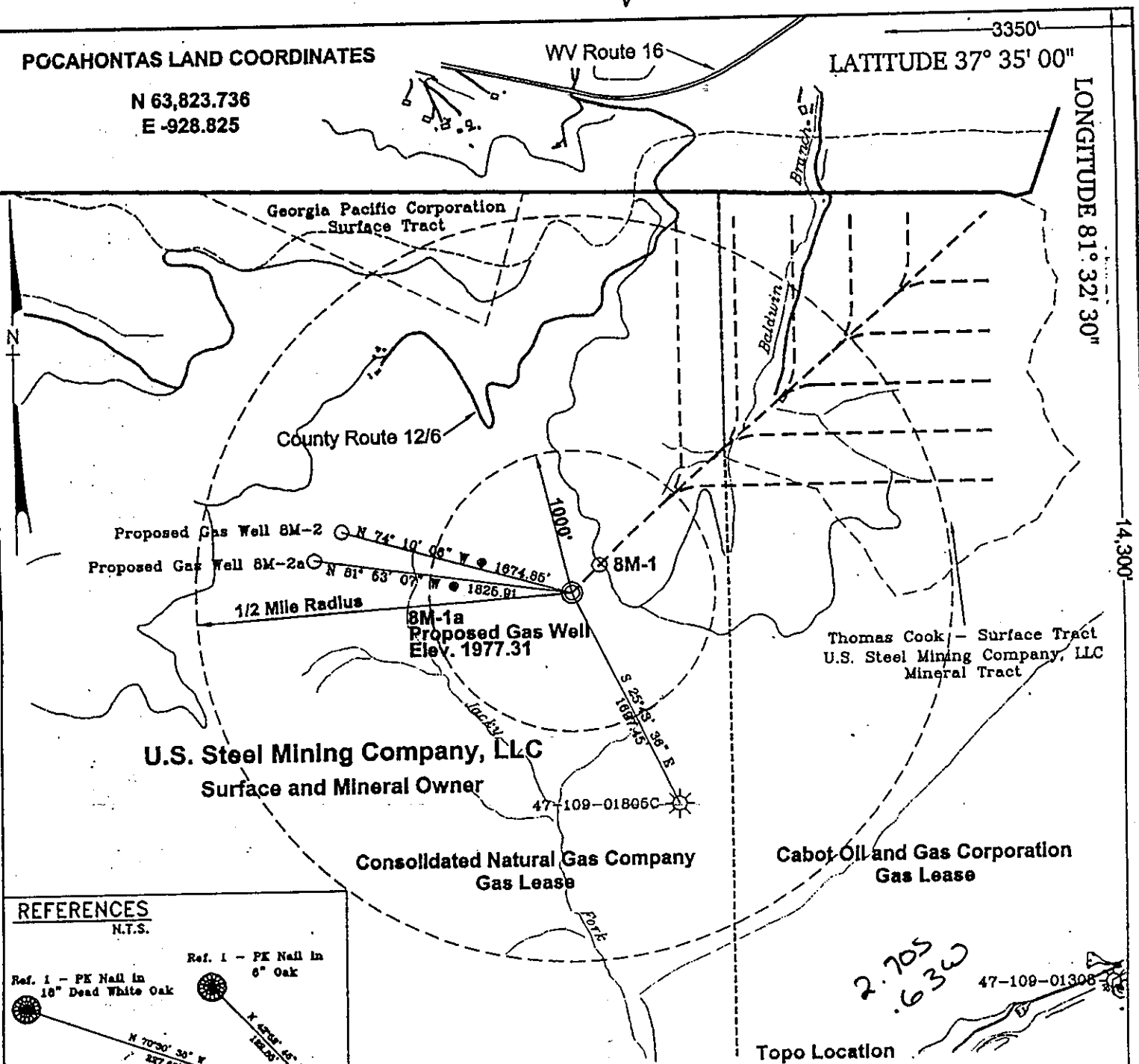


POCAHONTAS LAND COORDINATES

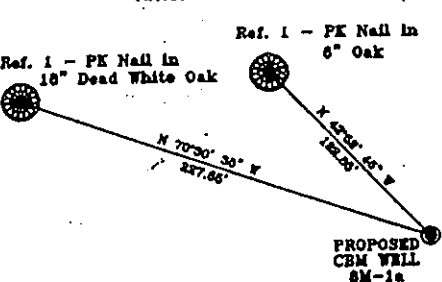
N 63,823.736
E -928.825

LATITUDE 37° 35' 00"

LONGITUDE 81° 32' 30"



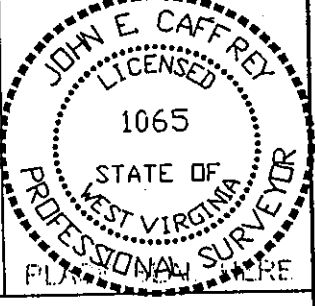
REFERENCES



Notes:
No known domestic water supplies within 1000 feet.
(+) Denotes location of well on USGS map.

FILE No. CDX
DRAWING NAME \PLATS\8M-1a
Drawing Number 8-30-99-2SP
SCALE 1" = 1000'
MINIMUM DEGREE OF ACCURACY 1 : 2500
PROVEN SOURCE OF ELEVATION USGS B.M. F44
ELEV. 1565

I THE UNDERSIGNED, HEREBY CERTIFY THAT THIS PLAT IS CORRECT TO THE BEST OF MY KNOWLEDGE AND BELIEF AND SHOWS ALL THE INFORMATION REQUIRED BY LAW AND THE REGULATIONS ISSUED AND PRESCRIBED BY THE DEPARTMENT OF MINES.
(SIGNED) [Signature]
R.P.E. R.E.S. 1065



STATE OF WEST VIRGINIA
DIVISION OF ENVIRONMENTAL PROTECTION
OFFICE OF OIL AND GAS
NITRO, WV

DATE August 30 19 99
OPERATOR'S WELL No. 8M-1a
API WELL No. 47 - 109 - 01845C
STATE COUNTY PERMIT

WELL TYPE: OIL GAS CBM LIQUID INJECTION WASTE DISPOSAL
(IF "GAS") PRODUCTION X STORAGE DEEP SHALLOW

LOCATION: ELEVATION 1977.31 WATER SHED JACKY FORK OF NANCY FORK
DISTRICT CENTER COUNTY WYOMING
QUADRANGLE PINEVILLE, WV

SURFACE OWNER U.S. STEEL MINING COMPANY, LLC ACREAGE 37977.66
CBM ROYALTY OWNER U.S. STEEL MINING COMPANY, LLC LEASE ACREAGE _____

LEASE No. _____

PROPOSED WORK: DRILL X CONVERT DRILL DEEPER REDRILL FRACTURE OR
STIMULATE PLUG OFF OLD FORMATION PERFORATE NEW
FORMATION OTHER PHYSICAL CHANGE IN WELL (SPECIFY) _____

PLUG AND ABANDON CLEAN OUT AND REPLUG
TARGET FORMATION POCAHONTAS NO. 3 & PENN. COALS ESTIMATED DEPTH 970'
WELL OPERATOR CDX GAS, LLC MANAGER JOSEPH ZUPANICK
ADDRESS P.O. BOX 609 ADDRESS PINEVILLE, WV 24874
PINEVILLE, WV 24874

6-60

OCT 04 1999

WYO 1845 C

State of West Virginia
Division of Environmental Protection
Section of Oil & Gas

AL

Well Operator's Report of Well Work

Farm name: U.S. Steel Mining Company, LLC

Operator Well No: 8M-1a

Location: Elevation: 1,976.52

Quadrangle: PINEVILLE

District: CENTER

County: WYOMING

Latitude: 14300 Feet South of 37 Deg. 35 Min. 00 Sec.

Longitude: 3350 Feet West of 81 Deg. 32 Min. 30 Sec.

Company: CDX Gas, LLC
5485 BELTLINE ROAD, SUITE 280
DALLAS, TX 75240-0000

Agent: JOSEPH A. ZUPANICK

Inspector: OFIE HELMICK

Permit issued: 09/24/99

Well Work commenced: 10/01/99

Well Work completed: 11/01/99

Verbal plugging

Permission granted on:

Rotary x Cable _____ Rig

Total depth (ft) 942.00

Fresh water depths (ft) N/A

Salt water depths (ft) N/A

Is coal being mined in the area (Y/N)? Y

Coal depths (ft): 63, 189, 284, 307, 383, 387, 467, 473, 478.5, 577, 543.5, 776, 830

Casing & Tubing Size	Used in Drilling	Left in Well	Cement Fill up
9 5/8"	40'	40'	13
7"	927.90'	927.90'	140
2 7/8"	230'	230'	

NOV 06 2000
 Division of Environmental Protection

OPEN FLOW DATA

Producing formation Pocahontas No. 3 Seam and Penn Coals Pay zone depth (ft) _____
 Gas: Initial open flow N/A Mcf/d Oil: Initial open flow _____ Bbl/d
 Final open flow N/A Mcf/d Final open flow _____ Bbl/d
 Time of open flow between initial and final tests: _____ hours
 Static rock pressure _____ psig (surface pressure) after _____ hours

Second Producing formation _____ Pay zone depth (ft) _____
 Gas: Initial open flow N/A Mcf/d Oil: Initial open flow _____ Bbl/d
 Final open flow N/A Mcf/d Final open flow _____ Bbl/d
 Time of open flow between initial and final tests: _____ hours
 Static rock pressure _____ psig (surface pressure) after _____ hours

Note: ON BACK OF THIS FORM, PUT THE FOLLOWING: 1) DETAILS OF PERFORATED INTERVALS, FRACTURING OR STIMULATING, PHYSICAL CHANGE, ETC. 2) THE WELL LOG WHICH IS A SYSTEMATICK DETAILED GEOLOGICAL RECORD OF ALL FORMATIONS, INCLUDING COAL ENCOUNTERED BY THE WELLBORE.

For: CDX Gas, LLC
 By: J. A. Zupanick
 Date: 10/20/00

NOV 23 2000

WYO 1845 C

Operator: 8M-1a
 API No. 47-109-01845
 Location: Pineville

Details of Perforated Intervals, Fracturing or Stimulation, Physical Change, Etc.

Well Log & Geologic Record

Formation	Top	Bottom
Sandy Shale	0	38
Shale	38	63
Coal	63	65
Sandy Shale	65	103
Shale	103	167
Sandy Shale	167	189
Coal	189	190
Shale	190	239
Sandy Shale	239	251
Shale	251	284
Coal	284	285
Shale	285	287
Sandy Shale	287	302
Shale	302	307
Coal	307	308
Shale	308	311
Sandy Shale	311	321
Shale	321	339
Sandy Shale	339	354
Shale	354	363
Shale	363	383
Coal	383	385.5
Shale	385.5	387
Coal	387	388
Shale	388	403
Sandy Shale	403	466
Shale	466	467
Coal	467	468
Shale	468	473
Coal	473	474
Shale	474	478.5
Coal	478.5	480
Sandy Shale	480	577
Coal	577	579
Sandy Shale	579	595
Shale	595	605
Sandy Shale	605	743.5

RECEIVED
 Office of Oil & Gas
 Permitting
 NOV 06 2000
 WV Division of
 Environmental Protection

NOV 23 2000

Operator: 8M-1a
API No. 47- 109-01845
Location: Pineville

Details of Perforated Intervals, Fracturing or Stimulation, Physical Change, Etc.

Well Log & Geologic Record (Continued)

Formation	Top	Bottom
Coal	743.5	746
Sandy Shale	746	776
Coal	776	779
Sandy Shale	779	830
Coal	830	831.5
Sandy Shale	831.5	893
Sandstone	893	942

RECEIVED
Office of Oil & Gas
Permitting
NOV 06 2000
WV Division of
Environmental Protection

WYO 1845 C