

STATE PLANE COORDINATES
(NAD 27 Datum)

7,396.562'

Lat. 37° 30' 00"

N 169,513.291

E 1,871,722.473

Latitude 37° 27' 52.88"

Longitude 81° 26' 31.02"

POCAHONTAS LAND COORDINATES

N 35,892.988

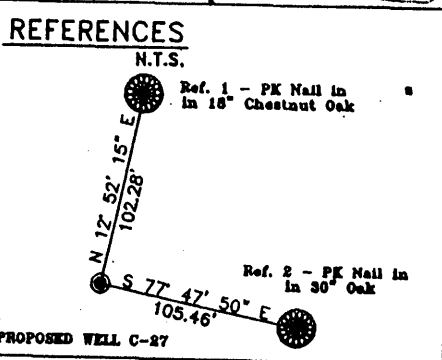
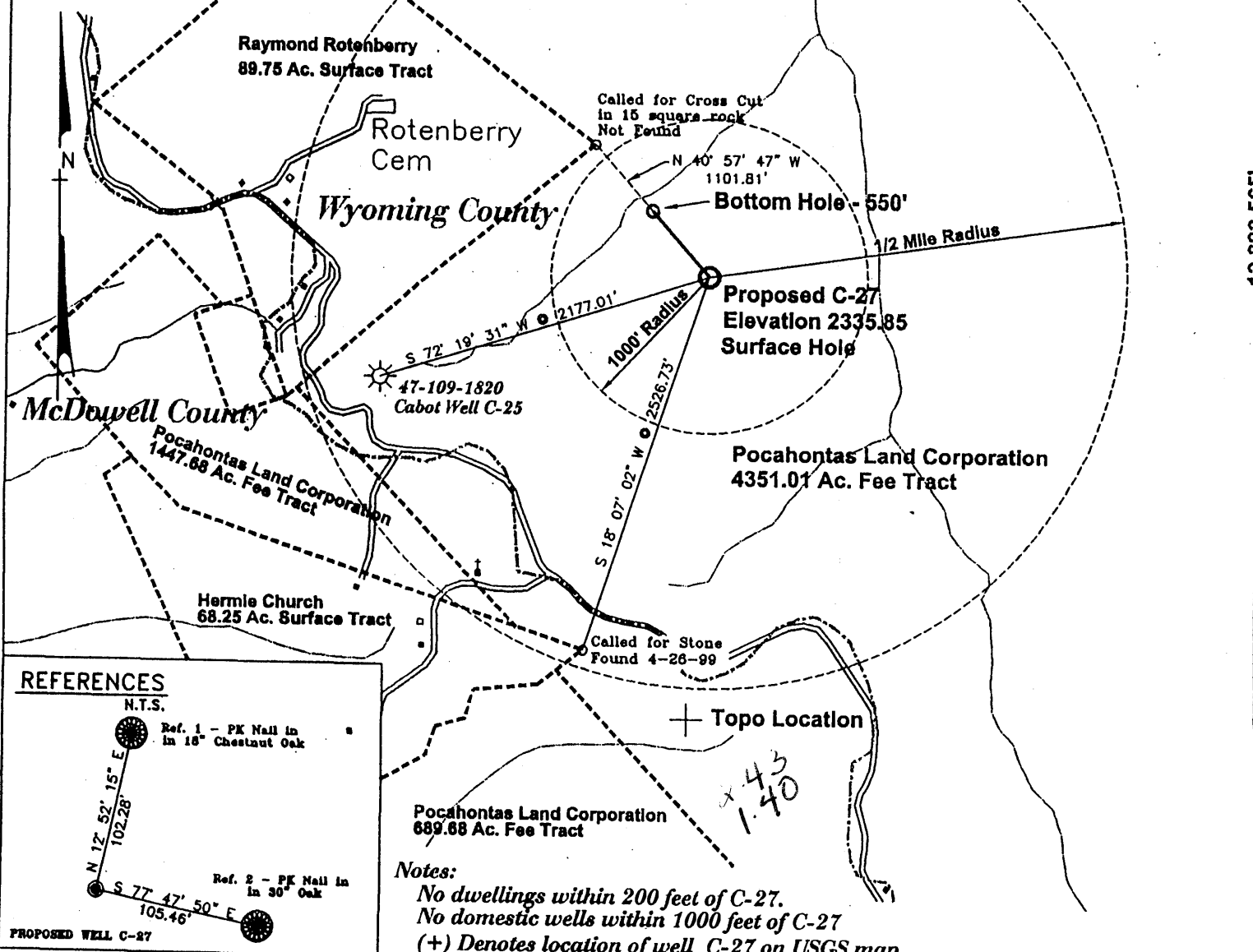
E 31,537.919

BLUESTONE COORDINATES

N 61,321.008

E 70,823.029

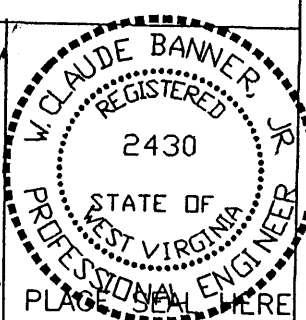
Long. 81° 25' 00"
12,822.565'



Notes:
 No dwellings within 200 feet of C-27.
 No domestic wells within 1000 feet of C-27
 (+) Denotes location of well C-27 on USGS map.

FILE No. CABOT-OIL&GAS
 DRAWING NAME \Well-C-27\PlatC-27
 SCALE 1" = 1000'
 DRAWING NUMBER 9-9-99-1SP
 MINIMUM DEGREE OF ACCURACY 1 : 2500
 PROVEN SOURCE OF ELEVATION Bluestone Coal Company Station 583, Elevation 2103.49

I THE UNDERSIGNED, HEREBY CERTIFY THAT THIS PLAT IS CORRECT TO THE BEST OF MY KNOWLEDGE AND BELIEF AND SHOWS ALL THE INFORMATION REQUIRED BY LAW AND THE REGULATIONS ISSUED AND PRESCRIBED BY THE DEPARTMENT OF MINES.
 (SIGNED) W. Claude Banner, Jr.
 R.P.E. 2430 R.P.S.



STATE OF WEST VIRGINIA
 DIVISION OF ENVIRONMENTAL PROTECTION
 OFFICE OF OIL AND GAS
 NITRO, WV

DATE SEPTEMBER 24 99
 OPERATOR'S WELL No. C-27
 API WELL No. 47 - 109 - 01851

WELL TYPE: OIL GAS X LIQUID INJECTION WASTE DISPOSAL STATE COUNTY PERMIT
 (IF "GAS") PRODUCTION X STORAGE DEEP SHALLOW
 LOCATION: ELEVATION 2335.85 WATER SHED UNNAMED TRIBUTARY OF WHITE OAK OF PINNACLE CREEK
 DISTRICT BARKERS RIDGE COUNTY WYOMING
 QUADRANGLE KEYSTONE, WV
 SURFACE OWNER POCAHONTAS LAND CORPORATION ACREAGE 4351.01 (Tax Map 137, Parcel P/O 132-1)
 ROYALTY OWNER POCAHONTAS LAND CORPORATION LEASE ACREAGE _____
 LEASE No. _____
 PROPOSED WORK: DRILL X CONVERT DRILL DEEPER REDRILL FRACTURE OR STIMULATE PLUG OFF OLD FORMATION PERFORATE NEW FORMATION OTHER PHYSICAL CHANGE IN WELL (SPECIFY) _____

PLUG AND ABANDON CLEAN OUT AND REPLUG
 TARGET FORMATION _____
 WELL OPERATOR CABOT OIL & GAS CORP. ESTIMATED DEPTH _____
 ADDRESS P.O. BOX 454 DESIGNATED AGENT JOHN ABSHIRE
GLASGOW, WV 25086 ADDRESS P.O. BOX 454
GLASGOW, WV 25086

660

SEP 15 1999

WYO 1851

WR-35

Date: 29-Nov-99
API # 47-109-01851

State of West Virginia
Division of Environmental Protection
Section of Oil and Gas
Well Operator's Report of Well Work

Handwritten initials

Farm name: Pocahontas Land Corp. Operator Well No.: Poca Land C-27

LOCATION: Elevation: 2,335.85' Quadrangle: Keystone
District: Barkers Ridge County: Wyoming
Latitude: 12,823 feet South of 37 DEG. 30 MIN. 0 SEC.
Longitude: 7,397 feet West of 81 DEG. 25 MIN. 0 SEC.

Company: Cabot Oil & Gas Corporation
400 Fairway Drive: Suite 400
Coraopolis, PA 15108-4308

Agent: John Abshire
Inspector: Ofie Helmick
Permit Issued: 10/5/99
Well Work Commenced: 10/10/99
Well Work Completed: 11/17/99
Verbal Plugging
Permission granted on:
Rotary X Cable _____
Total Depth (feet) 4986' (MD);
4905' (TVD)
Fresh Water Depths (ft) 165'
Salt Water Depths (ft) _____
Is coal being mined in area (Y / N)? _____
Coal Depths (ft) _____

Casing & Tubing Size	Used in Drilling	Left in Well	Cement Fill up Cu. Ft.
16"	17'	17'	
8-5/8"	1150.85'	1150.85'	175 sks Class "A"
4-1/2"	4468.75'	4468.75'	300 sks RFC

OPEN FLOW DATA

Producing formation Weir Pay zone depth (ft) 4266' - 4278'
 Gas: Initial open flow TSTM MCF/d Oil: Initial open flow N/A Bbl/d
 Final open flow 1000 comm MCF/d Final open flow N/A Bbl/d
 Time of open flow between initial and final tests 24 Hours
 Static rock pressure 515 psig (surface pressure after 48 Hours)

Second producing formation Pocono / Injun Pay zone depth (ft) 3990' - 4060'
 Gas: Initial open flow TSTM MCF/d Oil: Initial open flow N/A Bbl/d
 Final open flow 1000 comm MCF/d Final open flow N/A Bbl/d
 Time of open flow between initial and final tests 24 Hours
 Static rock pressure 515 psig (surface pressure after 48 Hours)

NOTE: ON BACK OF THIS FORM PUT THE FOLLOWING: 1). DETAILS OF PERFORATED INTERVALS, FRACTURING OR STIMULATING, PHYSICAL CHANGE, ETC. 2). THE WELL LOG WHICH IS A SYSTEMATIC DETAILED GEOLOGICAL RECORD OF ALL FORMATIONS, INCLUDING COAL ENCOUNTERED BY THE WELLBORE.

For: CABOT OIL & GAS CORPORATION

By: Ray Prudnick, Jr.
Date: 12-7-99

WYO 1851

OPEN FLOW DATA

Perf'd Weir from 4266'-4278'. Broke down with 250 gals of 15% HCl acid @ 603 psi. Frac'd with 810 bbls of gel fluid with 64,156# 20/40 mesh sand. ATP: 1000 psi. MTP: 1838 psi. AIR: 20 bpm.

Perf'd Pocono/Injun from 3990'-4060'. Broke down with 750 gals of 15% HCl acid @ 741 psi. Frac'd with 75Q foam using 288 bbls of fluid with 54,000# 20/40 mesh sand and 309,000scf N₂. ATP: 2100 psi. MTP: 2243 psi. AIR: 30 bpm. ISIP: 1432 psi.

FORMATION	TOP (TVD)	TOP (MD)	BASE (TVD)	BASE (MD)
Silt/Shale		0		1360
Shale	0	1360	0	1545
Princeton	0	1545	0	1612
Shale	0	1612	0	1656
RV	0	1656	0	1743
Shale	0	1743	0	1845
Avis	0	1845	0	1892
Silt/Shale	0	1892	0	2445
Maxton	0	2445	0	2560
Silt/Shale	0	2560	2990	2990
Little Lime	2990	2990	3094	3100
Shale	3094	3100	3174	3180
Big Lime	3174	3180	3896	3934
Injun	3896	3934	3980	4020
Pocono	3980	4020	4208	4260
Silt/Shale	4208	4260	4212	4265
Weir	4212	4265	4228	4281
Shale	4228	4281	4606	4673
Berea	4606	4673	4607	4674
Shale	4607	4674	4712	4815
Gordon	4712	4815	4780	4845
Shale	4780	4845	4905	4986
TD	4905	4986		