

**POCAHONTAS LAND COORDINATES**

N 47,091.117  
E -4,365.209

6900'  
LATITUDE 37° 30'

LONGITUDE 81° 32' 30"

Topo Location

S-3C  
Proposed Gas Well  
Elev. 1927.52

Berwind Land Company -  
Surface, Coal, Oil and Gas  
U.S. Steel Mining Company, LLC -  
Pocahontas No. 3 Seam Lessee  
Shannon-Pocahontas Mining Company -  
Pocahontas No. 4 Seam Lessee  
CNG Transmission Corporation -  
Oil and Gas Lessee  
CDX Gas, LLC - CBM Lessee

Wyoming County

McDowell County

Berwind Land Company - Coal, Oil and Gas  
U.S. Steel Mining Company, LLC - Pocahontas No. 3 Seam Lessee  
Berwind Group Oil and Gas Limited Partnership - Oil and Gas Lessee  
CDX Gas, LLC - CBM Lessee

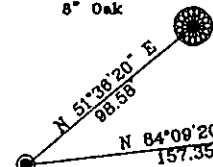
**Notes:**

No known domestic water supplies within 1000 feet.  
(+) Denotes location of well on USGS map.

**REFERENCES**

N.T.S.

Ref. 1 - PK Nail in 8" Oak



Ref. 2 - PK Nail in 24" Oak

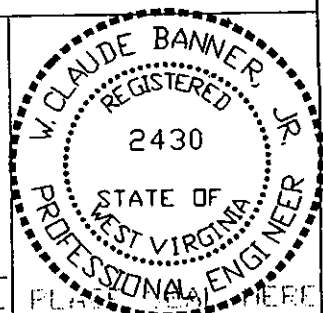
PROPOSED GAS Well S-3B

FILE No. CDXGAS  
DRAWING NAME \PLAT\S-3C  
Drawing Number 12-17-99-1SP  
SCALE 1" = 1000'  
MINIMUM DEGREE OF ACCURACY 1 : 2500  
PROVEN SOURCE OF ELEVATION USGS B.M. F44  
El. 1565

I THE UNDERSIGNED, HEREBY CERTIFY THAT THIS PLAT IS CORRECT TO THE BEST OF MY KNOWLEDGE AND BELIEF AND SHOWS ALL THE INFORMATION REQUIRED BY LAW AND THE REGULATIONS ISSUED AND PRESCRIBED BY THE DEPARTMENT OF MINES.

(SIGNED)

*W. Claude Banner, Jr.*  
R.P.E. 2430 R.P.S.



**STATE OF WEST VIRGINIA**  
**DIVISION OF ENVIRONMENTAL PROTECTION**  
**OFFICE OF OIL AND GAS**  
**NITRO, WV**

DATE MARCH 13 2000  
OPERATOR'S WELL No. S-3C  
API WELL No.

47 - 109 - 01889C

WELL TYPE: OIL GAS CBM LIQUID INJECTION WASTE DISPOSAL STATE COUNTY PERMIT  
(IF "GAS") PRODUCTION X STORAGE DEEP SHALLOW  
LOCATION: ELEVATION 1927.52 WATER SHED UNNAMED TRIBUTARY OF INDIAN CREEK  
DISTRICT CENTER COUNTY WYOMING  
QUADRANGLE WELCH, WV

SURFACE OWNER BERWIND LAND COMPANY ACREAGE 867.22 Tax Map 143 - Parcel 1  
CBM ROYALTY OWNER BERWIND LAND COMPANY LEASE ACREAGE 2940.66

LEASE No. \_\_\_\_\_

PROPOSED WORK: DRILL X CONVERT DRILL DEEPER REDRILL FRACTURE OR STIMULATE PLUG OFF OLD FORMATION PERFORATE NEW FORMATION OTHER PHYSICAL CHANGE IN WELL (SPECIFY)

PLUG AND ABANDON CLEAN OUT AND REPLUG  
TARGET FORMATION POCAHONTAS NO. 3 & NO. 4 SEAMS ESTIMATED DEPTH 1007'  
WELL OPERATOR CDX GAS, LLC MANAGER JOSEPH ZUPANICK  
ADDRESS P.O. BOX 609 ADDRESS PINEVILLE, WV 24874  
PINEVILLE, WV 24874

6-6-267

APR 14 2000

WYO 1889 C

State of West Virginia  
Division of Environmental Protection  
Section of Oil & Gas

Well Operator's Report of Well Work

Farm name: Berwind Land Company

Operator Well No: S-3C

Location: Elevation: 1,913.05

Quadrangle: WELCH

District: CENTER

County: WYOMING

Latitude: 1400 Feet South of 37 Deg. 30 Min. 00 Sec.  
Longitude: 6900 Feet West of 81 Deg. 32 Min. 30 Sec.

Company: CDX Gas, LLC  
P.O. Box 609  
Pineville, WV 24874

Agent: JOSEPH A. ZUPANICK

Inspector: OFIE HELMICK  
Permit Issued: 04/13/00  
Well Work commenced: 08/22/00  
Well Work completed: 10/08/00  
Verbal plugging  
Permission granted on:  
Rotary x Cable \_\_\_\_\_ Rig  
Total depth (ft) 1045' K.B.  
Fresh water depths (ft) N/A  
Salt water depths (ft) N/A  
Is coal being mined in the area (Y/N)? Y  
Coal depths (ft): Poca #3: 979' - 984'  
Poca #4: 918' - 921'  
Sewell: 234' - 236'

Casing & Tubing Size	Used in Drilling	Left in Well	Cement Fill up
13 3/8"	29'	29'	Surface
9 5/8"	263'	263'	Surface
7"	917'	917'	Surface

RECEIVED  
Office of Oil & Gas  
Permitting  
FEB 14 2001  
Division of  
Environmental Protection

OPEN FLOW DATA

Producing formation Pocahontas #3 coal  
Gas: Initial open flow N/A Mcf/d  
Final open flow N/A Mcf/d  
Time of open flow between initial and final tests: \_\_\_\_\_ hours  
Static rock pressure \_\_\_\_\_ psig (surface pressure) after \_\_\_\_\_ hours

Pay zone depth (ft) 979' - 984'  
Oil: Initial open flow \_\_\_\_\_ Bbl/d  
Final open flow \_\_\_\_\_ Bbl/d

Second Producing formation Pocahontas #4 coal  
Gas: Initial open flow N/A Mcf/d  
Final open flow N/A Mcf/d  
Time of open flow between initial and final tests: \_\_\_\_\_ hours  
Static rock pressure \_\_\_\_\_ psig (surface pressure) after \_\_\_\_\_ hours

Pay zone depth (ft) 918' - 921'  
Oil: Initial open flow \_\_\_\_\_ Bbl/d  
Final open flow \_\_\_\_\_ Bbl/d

Note: ON BACK OF THIS FORM, PUT THE FOLLOWING: 1) DETAILS OF PERFORATED INTERVALS, FRACTURING OR STIMULATING, PHYSICAL CHANGE, ETC. 2) THE WELL LOG WHICH IS A SYSTEMATICK DETAILED GEOLOGICAL RECORD OF ALL FORMATIONS, INCLUDING COAL ENCOUNTERED BY THE WELLBORE.

For: Frank Merendino  
By: Frank Merendino  
Date: 2/5/01

WYO 1069 C

FEB 23 2001

Operator: S-3C  
API No. 47- 109-01889 C  
Location: Wyoming County

Details of Perforated Intervals, Fracturing or Stimulation, Physical Change, Etc.

Horizontally Drill Pocahontas #3 coal seam

Well Log & Geologic Record - Depth from K.B.

Formation	Top	Bottom
Sand	0	234
Coal	234	236
Sand & Shales	236	566
Sand	566	802
Sand & Shales	802	918
Coal - Poca #4	918	921
Sand & Shales	921	979
Coal - Poca #3	979	984
Shale	984	1045
Total Depth	1045	

