

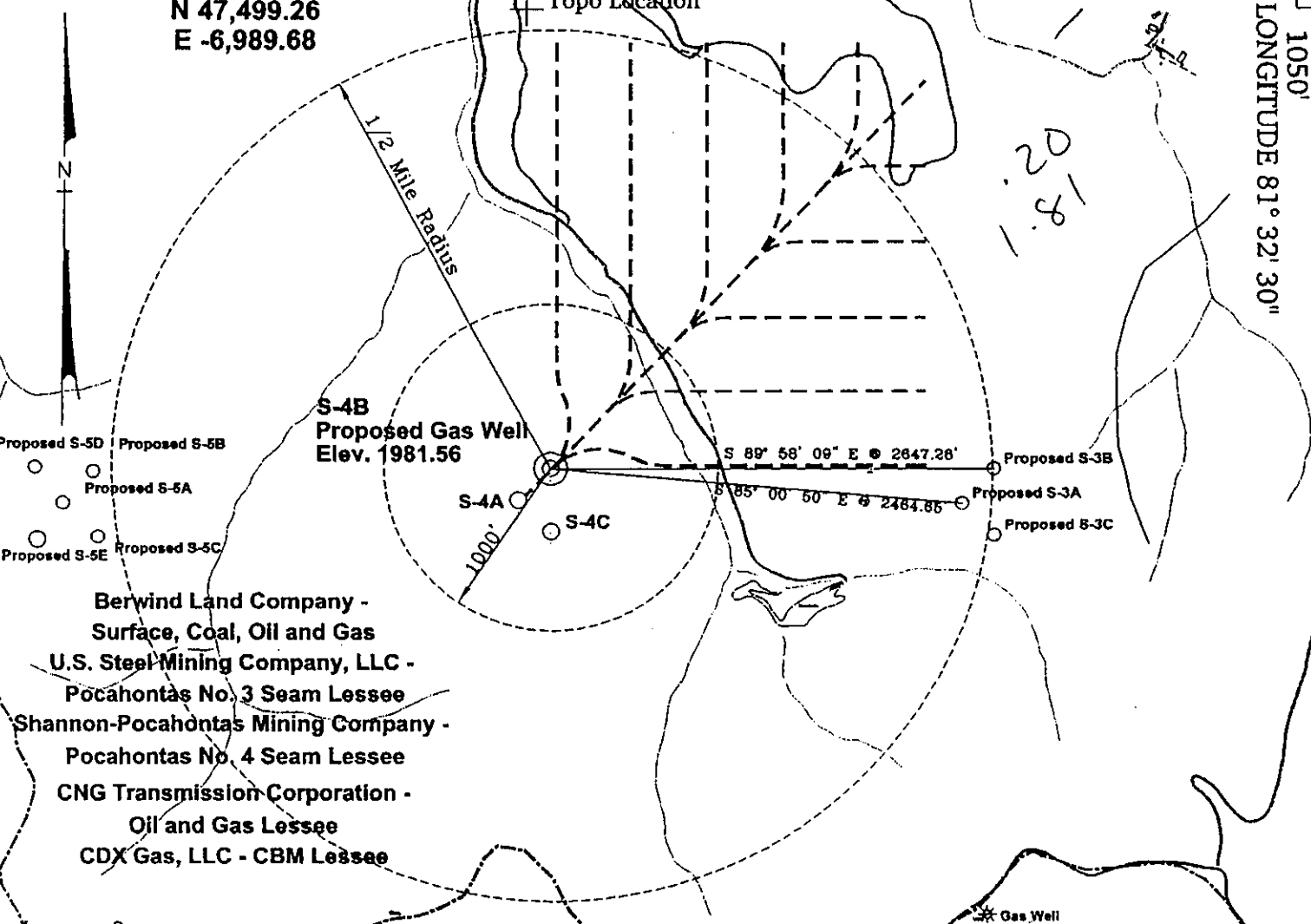
POCAHONTAS LAND COORDINATES

N 47,499.26
E -6,989.68

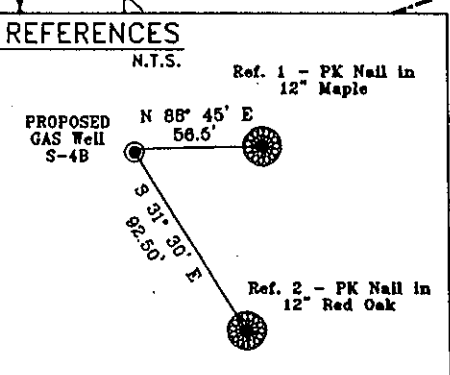
9550'

LATITUDE 37° 30' 00"

LONGITUDE 81° 32' 30"



**Berwind Land Company -
Surface, Coal, Oil and Gas
U.S. Steel Mining Company, LLC -
Pocahontas No. 3 Seam Lessee
Shannon-Pocahontas Mining Company -
Pocahontas No. 4 Seam Lessee
CNG Transmission Corporation -
Oil and Gas Lessee
CDX Gas, LLC - CBM Lessee**



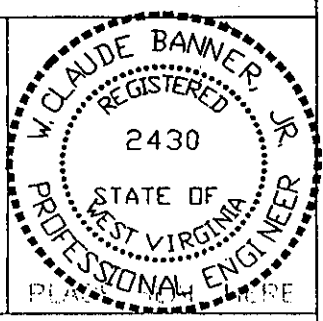
**Berwind Land Company - Coal, Oil and Gas
U.S. Steel Mining Company, LLC - Pocahontas No. 3 Seam Lessee
Berwind Group Oil and Gas Limited Partnership - Oil and Gas Lessee
CDX Gas, LLC - CBM Lessee**

Notes:
No known domestic water supplies within 1000 feet.
(+) Denotes location of well on USGS map.

FILE No. CDXGAS
DRAWING NAME \PLAT\S-4B
Drawing Number 3-2-00-2SP
SCALE 1" = 1000'
MINIMUM DEGREE OF ACCURACY 1 : 2500
PROVEN SOURCE OF ELEVATION USGS B.M. F44
El. 1565

I THE UNDERSIGNED, HEREBY CERTIFY THAT THIS PLAT IS CORRECT TO THE BEST OF MY KNOWLEDGE AND BELIEF AND SHOWS ALL THE INFORMATION REQUIRED BY LAW AND THE REGULATIONS ISSUED AND PRESCRIBED BY THE DEPARTMENT OF MINES.

(SIGNED) *W. Claude Banner, Jr.*
R.P.E. 2430 R.P.S. _____



**STATE OF WEST VIRGINIA
DIVISION OF ENVIRONMENTAL PROTECTION
OFFICE OF OIL AND GAS
NITRO, WV**

DATE MARCH 13, 2000
OPERATOR'S WELL No. S-4B
API WELL No. 47 - 109 - 01891C
STATE COUNTY PERMIT

WELL TYPE: OIL GAS CBM LIQUID INJECTION WASTE DISPOSAL
(IF "GAS") PRODUCTION X STORAGE DEEP SHALLOW horizontal well
LOCATION: ELEVATION 1981.56 WATER SHED UNNAMED TRIBUTARY OF INDIAN CREEK
DISTRICT CENTER COUNTY WYOMING

SURFACE OWNER BERWIND LAND COMPANY ACREAGE 867.22 Tax Map 143 - Parcel 1
CBM ROYALTY OWNER BERWIND LAND COMPANY LEASE ACREAGE 2940.66

LEASE No. _____

PROPOSED WORK: DRILL X CONVERT DRILL DEEPER REDRILL FRACTURE OR STIMULATE PLUG OFF OLD FORMATION PERFORATE NEW FORMATION OTHER PHYSICAL CHANGE IN WELL (SPECIFY) _____

PLUG AND ABANDON CLEAN OUT AND REPLUG
TARGET FORMATION POCAHONTAS NO. 3 & NO. 4 SEAMS ESTIMATED DEPTH 1142' *APR 14 2000*
WELL OPERATOR CDX GAS, LLC MANAGER JOSEPH ZUPANICK
ADDRESS P.O. BOX 609 ADDRESS P.O. BOX 609
PINEVILLE, WV 24874 PINEVILLE, WV 24874

6-6 0

WYO 1891 C

State of West Virginia
Division of Environmental Protection
Section of Oil & Gas

Reviewed: [Signature]

Well Operator's Report of Well Work

Farm name: Berwind Land Company

Operator Well No: S-4B

Location: Elevation: 2,011.81

Quadrangle: WELCH

District: CENTER

County: WYOMING

Latitude: 1050 Feet South of 37 Deg. 30 Min. 00 Sec.
Longitude: 9550 Feet West of 81 Deg. 32 Min. 30 Sec.

Company: CDX Gas, LLC
P.O. Box 609
Pineville, WV 24874

Agent: JOSEPH A. ZUPANICK

Inspector: OFIE HELMICK
Permit issued: 04/13/00
Well Work commenced: 06/23/00
Well Work completed: 09/01/00
Verbal plugging
Permission granted on: _____
Rotary x Cable _____ Rig
Total depth (ft) 1229'
Fresh water depths (ft) N/A
Salt water depths (ft) N/A
Is coal being mined in the area (Y/N)? Y
Coal depths (ft): Poca #4 - 1142 - 1147
Poca #3 - 1201 - 1206

Casing & Tubing Size	Used in Drilling	Left in Well	Cement Fill up
13 3/8"	34'	34'	Surface
9 5/8"	434'	434'	Surface
7"	1059'	1059'	

RECEIVED
Office of Oil & Gas
Permitting
JUN 11 2001
WV Division of
Environmental Protection

OPEN FLOW DATA

Producing formation Pocahontas #3
Gas: Initial open flow N/A Mcf/d
Final open flow N/A Mcf/d
Time of open flow between initial and final tests: _____ hours
Static rock pressure _____ psig (surface pressure) after _____ hours

Pay zone depth (ft) _____
Oil: Initial open flow _____ Bbl/d
Final open flow _____ Bbl/d

Second Producing formation Pocahontas #4
Gas: Initial open flow N/A Mcf/d
Final open flow N/A Mcf/d
Time of open flow between initial and final tests: _____ hours
Static rock pressure _____ psig (surface pressure) after _____ hours

Pay zone depth (ft) _____
Oil: Initial open flow _____ Bbl/d
Final open flow _____ Bbl/d

Note: ON BACK OF THIS FORM, PUT THE FOLLOWING: 1) DETAILS OF PERFORATED INTERVALS, FRACTURING OR STIMULATING, PHYSICAL CHANGE, ETC. 2) THE WELL LOG WHICH IS A SYSTEMATICK DETAILED GEOLOGICAL RECORD OF ALL FORMATIONS, INCLUDING COAL ENCOUNTERED BY THE WELLBORE.

Joseph Zupanick
For: CDX Gas, LLC
By: [Signature]
Date: 6/02/01

JUN 15 2001

WYOM. 1891 C

Details of Perforated Intervals, Fracturing or Stimulation, Physical Change, Etc.

Horizontally drilled Poca #3 and Poca #4 coal seams.

Well Log & Geologic Record - Depths from K.B.

Formation	Top	Bottom
Sand	0	55
Sand / Shale	55	244
Sand	244	304
Sand / Shale	304	329
Sand	329	344
Shale	344	354
Sand	354	386
Sand / Shale	386	405
Sand	405	465
Shale	465	475
Sand	475	610
Sand / Shale	610	905
Sand	905	1052
Shale	1052	1108
Sand	1108	1142
Coal - Poca #4	1142	1147
Shale	1147	1201
Coal - Poca #3	1201	1206
Sand / Shale	1206	1232
Total Depth	1232	

RECEIVED
 Office of Oil & Gas
 Permitting
JUN 11 2001
 WV Division of
 Environmental Protection