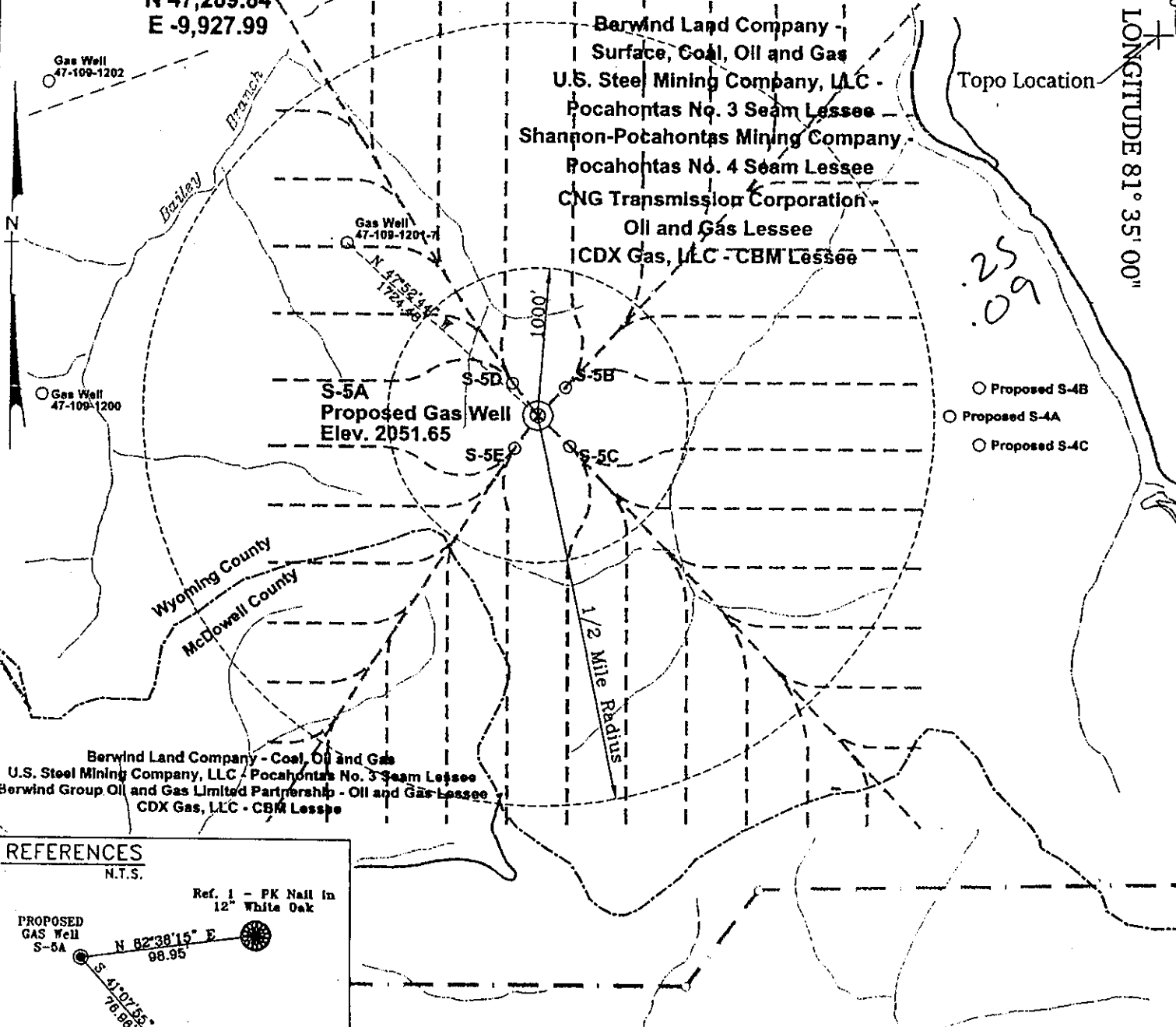


POCAHONTAS LAND COORDINATES

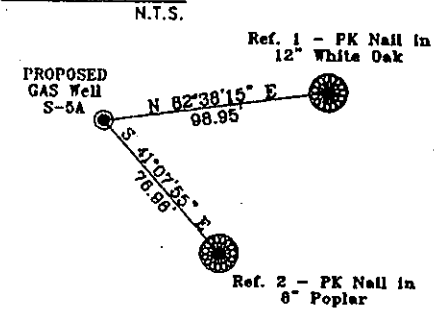
N 47,289.84
E -9,927.99

LATITUDE 37° 30' 00"

LONGITUDE 81° 35' 00"



REFERENCES

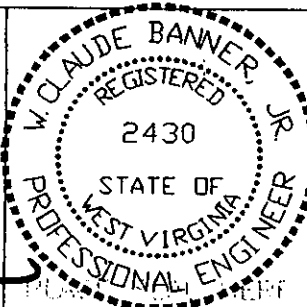


Notes:
No known domestic water supplies within 1000 feet.
(+) Denotes location of well on USGS map.

FILE No. CDXGAS
DRAWING NAME \PLAT\ S-5A
Drawing Number CDX 000307a/LL
SCALE 1" = 1000'
MINIMUM DEGREE OF ACCURACY 1 : 2500
PROVEN SOURCE OF ELEVATION USGS B.M. F44
EL. 1565

I THE UNDERSIGNED, HEREBY CERTIFY THAT THIS PLAT IS CORRECT TO THE BEST OF MY KNOWLEDGE AND BELIEF AND SHOWS ALL THE INFORMATION REQUIRED BY LAW AND THE REGULATIONS ISSUED AND PRESCRIBED BY THE DEPARTMENT OF MINES.

(SIGNED) W. Claude Banner, Jr.
R.P.E. 2430 R.P.S. 2430



STATE OF WEST VIRGINIA
DIVISION OF ENVIRONMENTAL PROTECTION
OFFICE OF OIL AND GAS
NITRO, WV

DATE MARCH 13, 2000
OPERATOR'S WELL No. S-5A
API WELL No. 47 - 109 - 01893C
STATE COUNTY PERMIT

WELL TYPE: OIL GAS CBM LIQUID INJECTION WASTE DISPOSAL
(IF "GAS") PRODUCTION X STORAGE DEEP SHALLOW

LOCATION: ELEVATION 2051.65 WATER SHED UNNAMED TRIBUTARY OF BAILEY BRANCH OF INDIAN CREEK
DISTRICT CENTER COUNTY WYOMING
QUADRANGLE WELCH, WV

SURFACE OWNER BERWIND LAND COMPANY ACREAGE 1045.06 Tax Map 143 - Parcel P/O 142-1
CBM ROYALTY OWNER BERWIND LAND COMPANY LEASE ACREAGE 2940.66

LEASE No. _____

PROPOSED WORK: DRILL X CONVERT DRILL DEEPER REDRILL FRACTURE OR STIMULATE PLUG OFF OLD FORMATION PERFORATE NEW FORMATION OTHER PHYSICAL CHANGE IN WELL (SPECIFY) _____

PLUG AND ABANDON CLEAN OUT AND REPLUG

TARGET FORMATION POCAHONTAS NO. 3 & NO. 4 SEAMS ESTIMATED DEPTH 1275' Apr 24 2000
WELL OPERATOR CDX GAS, LLC MANAGER JOSEPH ZUPANICK
ADDRESS P.O. BOX 609 ADDRESS P.O. BOX 609
PINEVILLE, WV 24874 PINEVILLE, WV 24874

6-0-0

WYO 1893 C

State of West Virginia
Division of Environmental Protection
Section of Oil & Gas

ALP

Well Operator's Report of Well Work

Farm name: Berwind Land Company

Operator Well No: S-5A

Location: Elevation: 2,064.59

Quadrangle: WELCH

District: CENTER

County: WYOMING

Latitude: 1300 Feet South of 37 Deg. 30 Min. 00 Sec.

Longitude: 450 Feet West of 81 Deg. 35 Min. 00 Sec.

Company: CDX Gas, LLC
P.O. Box 609
Pineville, WV 24874

Agent: JOSEPH A. ZUPANICK

Inspector: OFIE HELMICK
Permit Issued: 04/13/00
Well Work commenced: 07/29/00
Well Work completed: 08/08/00
Verbal plugging
Permission granted on: _____
Rotary x Cable _____ Rig _____
Total depth (ft) 1156'
Fresh water depths (ft) N/A
Salt water depths (ft) N/A
Is coal being mined in the area (Y/N)? Y
Coal depths (ft): N/A

Casing & Tubing Size	Used in Drilling	Left in Well	Cement Fill up
9 5/8"	31'	31'	Surface
7"	1064'	1064'	Surface

RECEIVED
Office of Oil & Gas
Permitting
JUN 11 2001
WV Division of
Environmental Protection

OPEN FLOW DATA

Producing formation Non-Producer
Gas: Initial open flow N/A Mcf/d
Final open flow N/A Mcf/d
Time of open flow between initial and final tests: _____ hours
Static rock pressure _____ psig (surface pressure) after _____ hours

Pay zone depth (ft) _____
Oil: Initial open flow _____ Bbl/d
Final open flow _____ Bbl/d

Second Producing formation _____
Gas: Initial open flow N/A Mcf/d
Final open flow N/A Mcf/d
Time of open flow between initial and final tests: _____ hours
Static rock pressure _____ psig (surface pressure) after _____ hours

Pay zone depth (ft) _____
Oil: Initial open flow _____ Bbl/d
Final open flow _____ Bbl/d

Note: ON BACK OF THIS FORM, PUT THE FOLLOWING: 1) DETAILS OF PERFORATED INTERVALS, FRACTURING OR STIMULATING, PHYSICAL CHANGE, ETC. 2) THE WELL LOG WHICH IS A SYSTEMATICK DETAILED GEOLOGICAL RECORD OF ALL FORMATIONS, INCLUDING COAL ENCOUNTERED BY THE WELLBORE.

Joseph Zupanick
For: CDX Gas, LLC
By: J. A. Zupanick
Date: 6/21/01

JUN 15 2001

WYOM., 1893 C

Operator: S-5A
API No. 47- 109-01893 C
Location: Wyoming County

Details of Perforated Intervals, Fracturing or Stimulation, Physical Change, Etc.

N/A

Well Log & Geologic Record - Depths from K.B.

Formation	Top	Bottom
Overburden	0	6
Sand	6	31
Sand / Shale	31	91
Sand	91	138
Sand / Shale	138	259
Sand	259	287
Sand / Shale	287	371
Sand	371	410
Sand / Shale	410	471
Sand	471	500
Sand / Shale	500	505
Sand	505	507
Sand / Shale	507	593
Sand	593	656
Sand / Shale	656	671
Sand	671	729
Sand / Shale	729	1019
Sand	1019	1156
Total Depth	1156	

