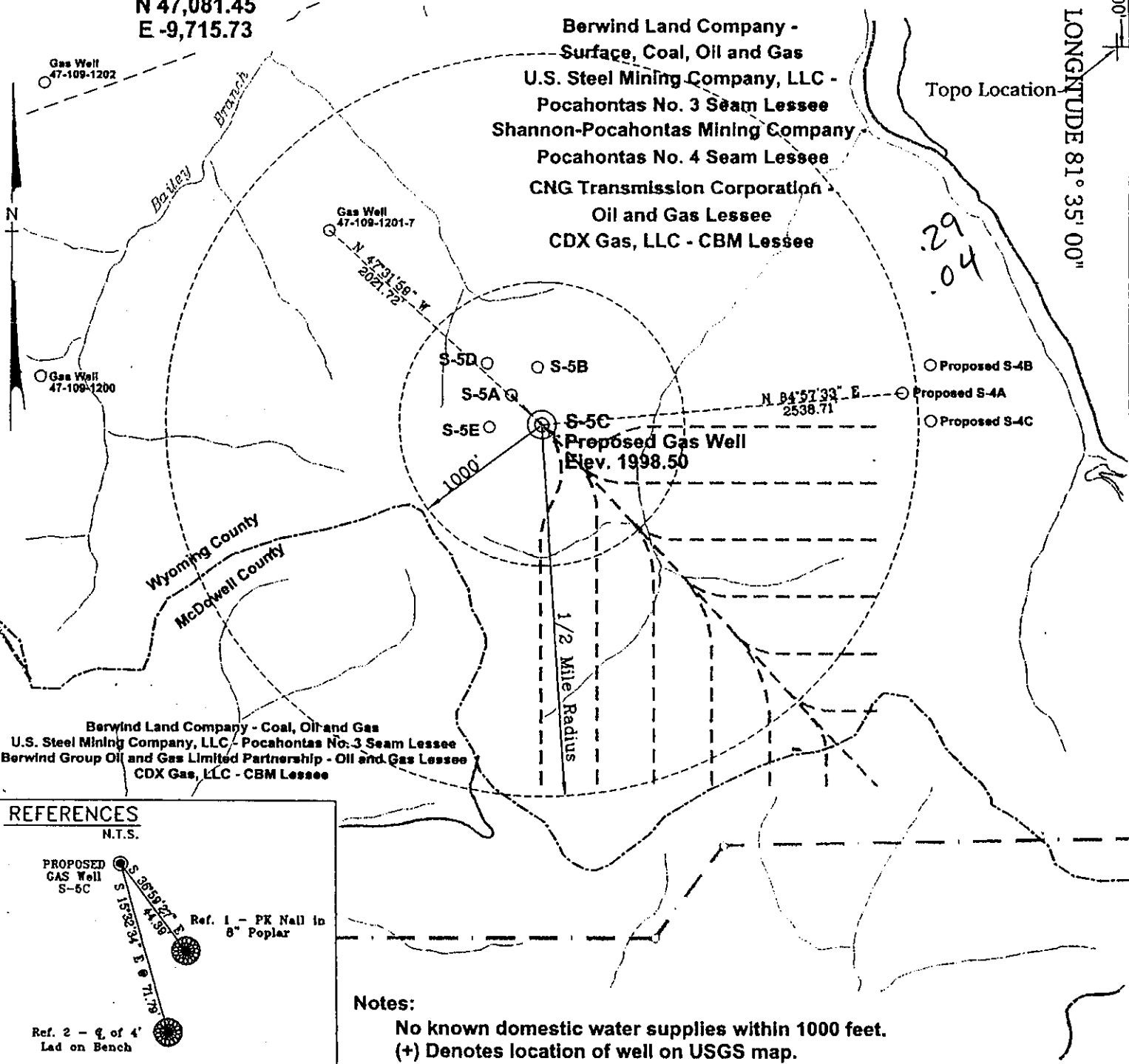


POCAHONTAS LAND COORDINATES

N 47,081.45
E -9,715.73

LATITUDE 37° 30' 00"

200'
1500'
LONGITUDE 81° 35' 00"

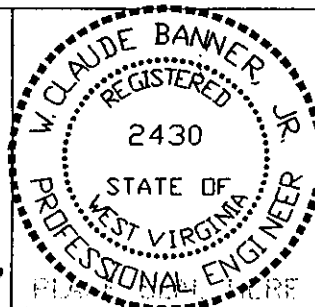


REFERENCES
N.T.S.

Notes:
No known domestic water supplies within 1000 feet.
(+) Denotes location of well on USGS map.

FILE No. CDXGAS
DRAWING NAME \PLAT\S-5C
Drawing Number CDX 000310a/LL
SCALE 1" = 1000'
MINIMUM DEGREE OF ACCURACY 1 : 2500
PROVEN SOURCE OF ELEVATION USGS B.M. F44
El. 1565

I THE UNDERSIGNED, HEREBY CERTIFY THAT THIS PLAT IS CORRECT TO THE BEST OF MY KNOWLEDGE AND BELIEF AND SHOWS ALL THE INFORMATION REQUIRED BY LAW AND THE REGULATIONS ISSUED AND PRESCRIBED BY THE DEPARTMENT OF MINES.
(SIGNED) *W. Claude Banner Jr.*
R.P.E. 2430 R.P.S.



STATE OF WEST VIRGINIA
DIVISION OF ENVIRONMENTAL PROTECTION
OFFICE OF OIL AND GAS
NITRO, WV

DATE MARCH 13, 2000
OPERATOR'S WELL No. S-5C
API WELL No. 47 - 109 - 01895C
STATE, COUNTY PERMIT

WELL TYPE: OIL GAS CBM LIQUID INJECTION WASTE DISPOSAL
(IF "GAS") PRODUCTION X STORAGE DEEP SHALLOW horizontal well

LOCATION: ELEVATION 1998.50 WATER SHED UNNAMED TRIBUTARY OF INDIAN CREEK
DISTRICT CENTER COUNTY WYOMING
QUADRANGLE WELCH, WV

SURFACE OWNER BERWIND LAND COMPANY ACREAGE 1045.06 Tax Map 143 - Parcel P/O 142-1
CBM ROYALTY OWNER BERWIND LAND COMPANY LEASE ACREAGE 2940.66
LEASE No. _____

PROPOSED WORK: DRILL X CONVERT DRILL DEEPER REDRILL FRACTURE OR STIMULATE PLUG OFF OLD FORMATION PERFORATE NEW FORMATION OTHER PHYSICAL CHANGE IN WELL (SPECIFY) _____

PLUG AND ABANDON CLEAN OUT AND REPLUG
TARGET FORMATION POCAHONTAS NO. 3 & NO. 4 SEAMS ESTIMATED DEPTH 1215' APR 1 - 2000
WELL OPERATOR CDX GAS, LLC MANAGER JOSEPH ZUPANICK
ADDRESS P.O. BOX 609 ADDRESS P.O. BOX 609
PINEVILLE, WV 24874 PINEVILLE, WV 24874

6-6 0

WYO 1895C

State of West Virginia
Division of Environmental Protection
Section of Oil & Gas

12/13

Well Operator's Report of Well Work

Farm name: Berwind Land Company

Operator Well No: S-5C

Location: Elevation: 1,997.61

Quadrangle: WELCH

District: CENTER

County: WYOMING

Latitude: 1500 Feet South of 37 Deg. 30 Min. 00 Sec.
Longitude: 200 Feet West of 81 Deg. 35 Min. 00 Sec.

Company: CDX Gas, LLC
P.O. Box 609
Pineville, WV 24874

Agent: JOSEPH A. ZUPANICK

Inspector: OFIE HELMICK
Permit Issued: 04/13/00
Well Work commenced: 09/27/00
Well Work completed: 11/26/00
Verbal plugging
Permission granted on: _____
Rotary x Cable _____ Rig
Total depth (ft) 1359'
Fresh water depths (ft) N/A
Salt water depths (ft) N/A
Is coal being mined in the area (Y/N)? Y
Coal depths (ft): Poca #3 - 1234 - 1239

Casing & Tubing Size	Used in Drilling	Left in Well	Cement Fill up
13 3/8"	24'	24'	Surface
9 5/8"	467'	467'	Surface
7"	1138'	1138'	Surface

RECEIVED
Office of Oil & Gas
Permitting
JUN 11 2001
WV Division of
Environmental Protection

OPEN FLOW DATA

Producing formation Pocahontas #3
Gas: Initial open flow N/A Mcf/d
Final open flow N/A Mcf/d
Time of open flow between initial and final tests: _____ hours
Static rock pressure _____ psig (surface pressure) after _____ hours

Pay zone depth (ft) _____
Oil: Initial open flow _____ Bbl/d
Final open flow _____ Bbl/d

Second Producing formation _____
Gas: Initial open flow N/A Mcf/d
Final open flow N/A Mcf/d
Time of open flow between initial and final tests: _____ hours
Static rock pressure _____ psig (surface pressure) after _____ hours

Pay zone depth (ft) _____
Oil: Initial open flow _____ Bbl/d
Final open flow _____ Bbl/d

Note: ON BACK OF THIS FORM, PUT THE FOLLOWING: 1) DETAILS OF PERFORATED INTERVALS, FRACTURING OR STIMULATING, PHYSICAL CHANGE, ETC. 2) THE WELL LOG WHICH IS A SYSTEMATICK DETAILED GEOLOGICAL RECORD OF ALL FORMATIONS, INCLUDING COAL ENCOUNTERED BY THE WELLBORE.

Joseph Zupanick
For: CDX Gas, LLC
By: J. A. Zupanick
Date: 6/20/01

JUN 15 2001

WYOM 1895 C

Operator: S-5C
 API No. 47- 109-01895 C
 Location: Wyoming County

Details of Perforated Intervals, Fracturing or Stimulation, Physical Change, Etc.

Horizontally drilled Poca #3 coal seam

Well Log & Geologic Record - Depths from K.B.

Formation	Top	Bottom
Sand	0	507
Sand / Shale	507	526
Sand	526	555
Sand / Shale	555	558
Sand	558	655
Sand / Shale	655	708
Sand	708	783
Sand / Shale	783	905
Sand	905	912
Sand / Shale	912	940
Sand	940	948
Sand / Shale	948	953
Sand	953	1081
Sand / Shale	1081	1149
Shale	1149	1165
Sand	1165	1166
Shale	1166	1213
Sand / Shale	1213	1226
Shale	1226	1234
Coal - Poca #3	1234	1239
Shale	1239	1250
Sand / Shale	1250	1254
Shale	1254	1271
Sand / Shale	1271	1276
Shale	1276	1294
Sand / Shale	1294	1331
Sand	1331	1359
Total Depth	1359	

RECEIVED
 Office of Oil & Gas
 Permitting
JUN 11 2001
 WV Division of
 Environmental Protection