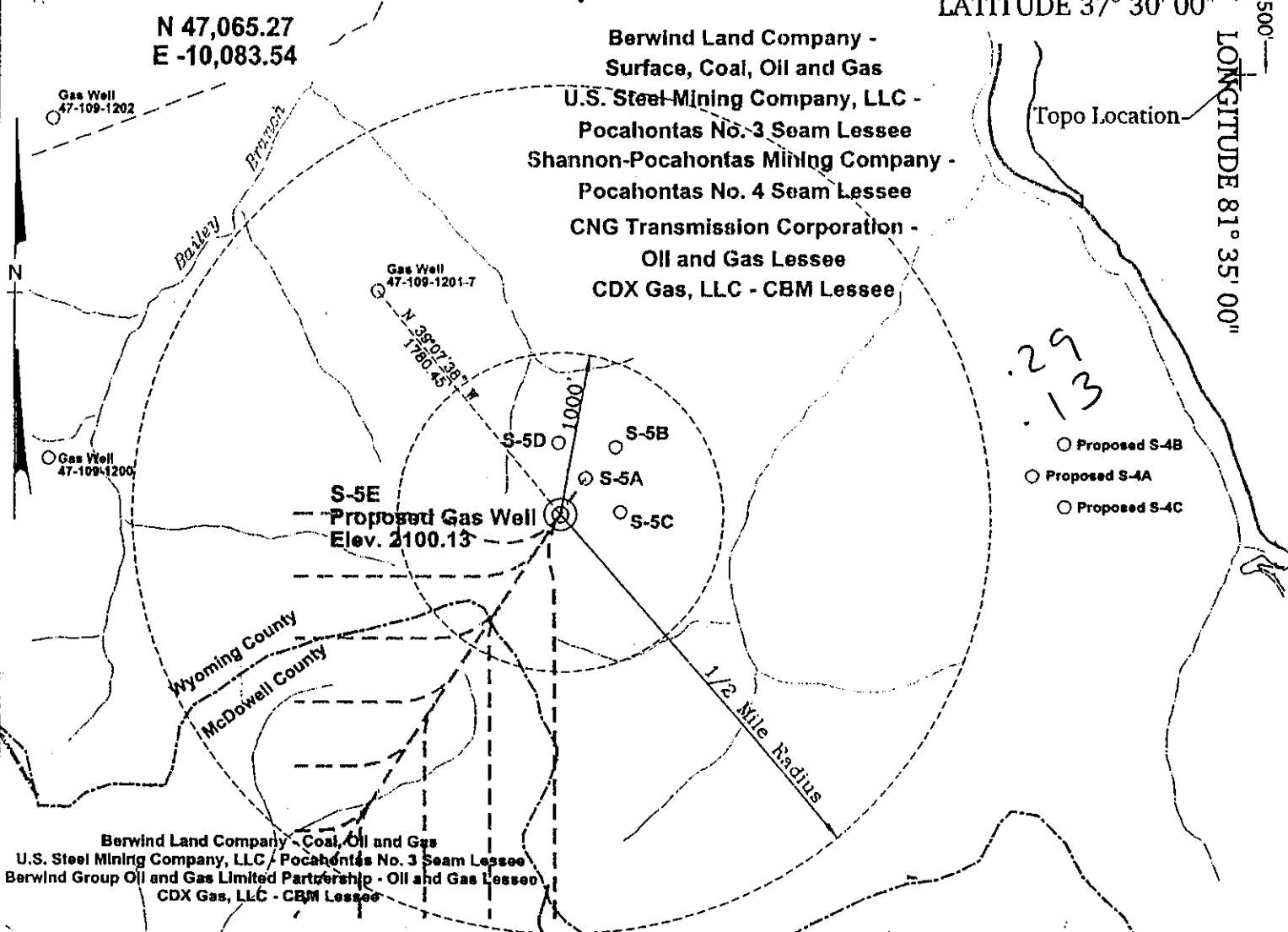


**POCAHONTAS LAND COORDINATES**

N 47,065.27  
E -10,083.54

LATITUDE 37° 30' 00"  
LONGITUDE 81° 35' 00"



**REFERENCES**  
N.T.S.

PROPOSED GAS Well S-5E

Ref. 1 - PK Nail in 8" Maple  
S 77°08'49" E • 195.21'

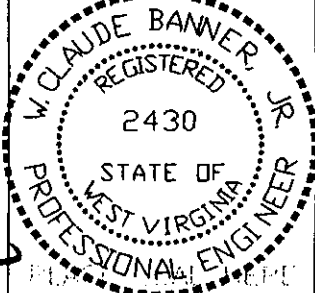
Ref. 2 - PK Nail in 14" Ash  
S 67°19'44" E • 184.14'

**Notes:**  
No known domestic water supplies within 1000 feet.  
(+) Denotes location of well on USGS map.

FILE No. CDXGAS  
DRAWING NAME \PLAT\S-5E  
Drawing Number CDX 000310c/LL  
SCALE 1" = 1000'  
MINIMUM DEGREE OF ACCURACY 1 : 2500  
PROVEN SOURCE OF ELEVATION USGS B.M. F44  
El. 1565

I THE UNDERSIGNED, HEREBY CERTIFY THAT THIS PLAT IS CORRECT TO THE BEST OF MY KNOWLEDGE AND BELIEF AND SHOWS ALL THE INFORMATION REQUIRED BY LAW AND THE REGULATIONS ISSUED AND PRESCRIBED BY THE DEPARTMENT OF MINES.

(SIGNED) *W. Claude Banner, Jr.*  
R.P.E. 2430 R.P.S. \_\_\_\_\_



**STATE OF WEST VIRGINIA**  
**DIVISION OF ENVIRONMENTAL PROTECTION**  
**OFFICE OF OIL AND GAS**  
**NITRO, WV**

DATE MARCH 13, 2000  
OPERATOR'S WELL No. S-5E  
API WELL No. 47 - 109 - 01897C  
STATE COUNTY PERMIT

WELL TYPE: OIL GAS CBM LIQUID INJECTION WASTE DISPOSAL  
(IF "GAS") PRODUCTION X STORAGE DEEP SHALLOW Horizontal well

LOCATION: ELEVATION 2100.13 WATER SHED UNNAMED TRIBUTARY OF BAILEY BRANCH OF INDIAN CREEK  
DISTRICT CENTER COUNTY WYOMING  
QUADRANGLE WELCH, WV

SURFACE OWNER BERWIND LAND COMPANY ACREAGE 1045.06 Tax Map 143 - Parcel P/O 142-1  
CBM ROYALTY OWNER BERWIND LAND COMPANY LEASE ACREAGE 2940.66  
LEASE No. \_\_\_\_\_

PROPOSED WORK: DRILL X CONVERT DRILL DEEPER REDRILL FRACTURE OR STIMULATE PLUG OFF OLD FORMATION PERFORATE NEW FORMATION OTHER PHYSICAL CHANGE IN WELL (SPECIFY) \_\_\_\_\_

PLUG AND ABANDON CLEAN OUT AND REPLUG \_\_\_\_\_

TARGET FORMATION POCAHONTAS NO. 3 & NO. 4 SEAMS ESTIMATED DEPTH 1323'  
WELL OPERATOR CDX GAS, LLC MANAGER JOSEPH ZUPANICK  
ADDRESS P.O. BOX 609 ADDRESS P.O. BOX 609  
PINEVILLE, WV 24874 PINEVILLE, WV 24874

6-6 0

APR 24 2000

MVD 1897 C

State of West Virginia  
Division of Environmental Protection  
Section of Oil & Gas

*MLB*

Well Operator's Report of Well Work

Farm name: Berwind Land Company

Operator Well No: S-5E

Location: Elevation: 2,102.72

Quadrangle: WELCH

District: CENTER

County: WYOMING

Latitude: 1500 Feet South of 37 Deg. 30 Min. 00 Sec.  
Longitude: 650 Feet West of 81 Deg. 35 Min. 00 Sec.

Company: CDX Gas, LLC  
P.O. Box 609  
Pineville, WV 24874

Agent: JOSEPH A. ZUPANICK

Inspector: OFIE HELMICK  
Permit Issued: 04/13/00  
Well Work commenced: 09/14/00  
Well Work completed: 02/09/01  
Verbal plugging \_\_\_\_\_  
Permission granted on: \_\_\_\_\_  
Rotary x Cable \_\_\_\_\_ Rig \_\_\_\_\_  
Total depth (ft) 1431'  
Fresh water depths (ft) N/A  
Salt water depths (ft) N/A  
Is coal being mined in the area (Y/N)? Y  
Coal depths (ft): Poca #4 - 1286 - 1291  
Poca #3 - 1343 - 1347

Casing & Tubing Size	Used in Drilling	Left in Well	Cement Fill up
13 3/8"	30'	30'	Surface
9 5/8"	617'	617'	Surface
7"	1261'	1261'	Surface

RECEIVED  
Office of Oil & Gas  
Permitting  
  
JUN 11 2001  
  
WV Division of  
Environmental Protection

OPEN FLOW DATA

Producing formation Pocahontas #3 Pay zone depth (ft) \_\_\_\_\_  
 Gas: Initial open flow N/A Mcf/d Oil: Initial open flow \_\_\_\_\_ Bbl/d  
 Final open flow N/A Mcf/d Final open flow \_\_\_\_\_ Bbl/d  
 Time of open flow between initial and final tests: \_\_\_\_\_ hours  
 Static rock pressure \_\_\_\_\_ psig (surface pressure) after \_\_\_\_\_ hours

Second Producing formation Pocahontas #4 Pay zone depth (ft) \_\_\_\_\_  
 Gas: Initial open flow N/A Mcf/d Oil: Initial open flow \_\_\_\_\_ Bbl/d  
 Final open flow N/A Mcf/d Final open flow \_\_\_\_\_ Bbl/d  
 Time of open flow between initial and final tests: \_\_\_\_\_ hours  
 Static rock pressure \_\_\_\_\_ psig (surface pressure) after \_\_\_\_\_ hours

Note: ON BACK OF THIS FORM, PUT THE FOLLOWING: 1) DETAILS OF PERFORATED INTERVALS, FRACTURING OR STIMULATING, PHYSICAL CHANGE, ETC. 2) THE WELL LOG WHICH IS A SYSTEMATICK DETAILED GEOLOGICAL RECORD OF ALL FORMATIONS, INCLUDING COAL ENCOUNTERED BY THE WELLBORE.

Joseph Zupanick  
For: CDX Gas, LLC  
By: *J.A. Zupanick*  
Date: 6/20/01

JUN 15 2001

WYOM. 1897 C

Operator: S-5E  
API No. 47- 109-01897 C  
Location: Wyoming County

Details of Perforated Intervals, Fracturing or Stimulation, Physical Change, Etc.

Horizontally drilled Poca #3 and Poca #4 coal seams.

Well Log & Geologic Record - Depths from K.B.

Formation	Top	Bottom
Sand	0	782
Sand / Shale	782	819
Sand	819	925
Sand / Shale	975	1074
Sand	1074	1193
Sand / Shale	1193	1286
Coal - Poca #4	1286	1291
Shale	1291	1343
Coal - Poca #3	1343	1347
Shale	1347	1431
Total Depth	1431	

**RECEIVED**  
Office of Oil & Gas  
Permitting  
**JUN 11 2001**  
WV Division of  
Environmental Protection