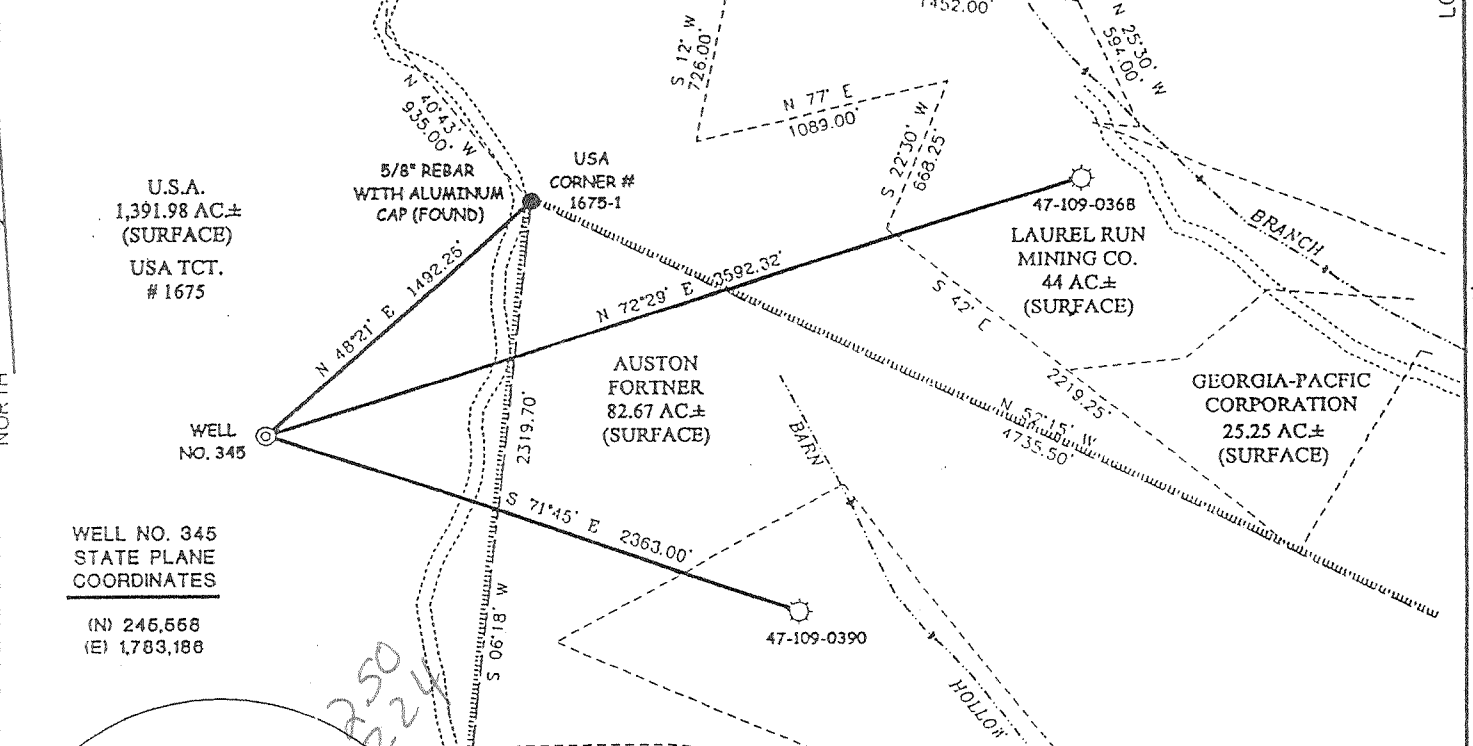
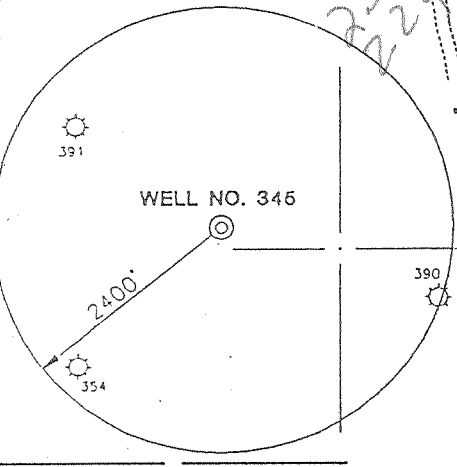


W.M. RITTER LUMBER COMPANY LEASE

65,000 ACRES ± WELL NO. 345



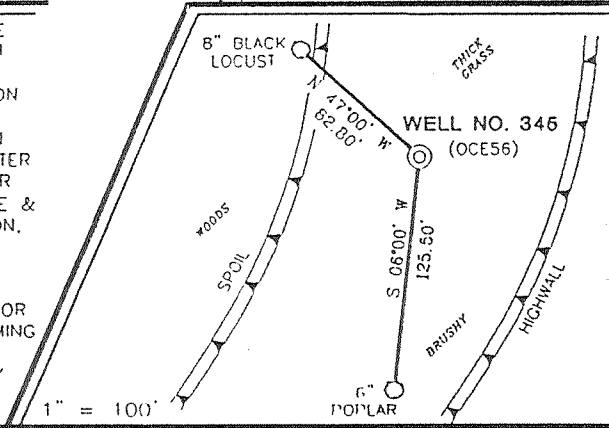
**WELL NO. 345
STATE PLANE
COORDINATES**
(N) 246,568
(E) 1,783,188



NOTES ON SURVEY

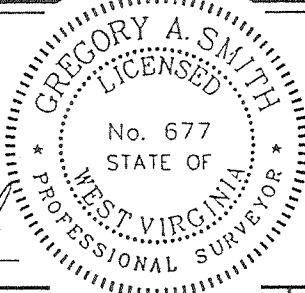
1. TIES TO WELLS AND CORNERS ARE BASED ON STATE PLANE GRID NORTH WV SOUTH ZONE NAD '27.
2. TIES TO REFERENCES ARE BASED ON MAGNETIC NORTH 03/09/00.
3. LEASE BOUNDARY SHOWN HEREON TAKEN FROM A TITLE ABSTRACT ON RITTER TRACT NUMBERS 10059-F AND OTHER PARCELS DATED 12/01/52 BY WOODROE & KIZER, ATTORNEYS AT LAW, CHARLESTON, WV AND FROM A DESCRIPTION OF USA TCT #1655 DB 300 PG 347.
4. SURFACE OWNER AND ADJOINER INFORMATION TAKEN FROM THE ASSESSOR AND COUNTY CLERK RECORDS OF WYOMING COUNTY IN FEBRUARY, 2000.
5. WELL LAT./LONG. ESTABLISHED BY DGPS (SUBMETER MAPPING GRADE).

REFERENCES



I THE UNDERSIGNED, HEREBY CERTIFY THAT THIS PLAT IS CORRECT TO THE BEST OF MY KNOWLEDGE AND BELIEF AND SHOWS ALL THE INFORMATION REQUIRED BY LAW AND THE REGULATIONS ISSUED AND PRESCRIBED BY THE DEPARTMENT OF ENERGY.

P.S. 677 *Gregory A. Smith*



(+) DENOTES LOCATION OF WELL ON UNITED STATES TOPOGRAPHIC MAPS.
DATE MARCH 29, 2000
OPERATORS WELL NO. RITTER NO. 345
API WELL NO. 47-109-01913
STATE COUNTY PERMIT

MINIMUM DEGREE OF ACCURACY 1 / 2500 FILE NO. 3999P345 (77-51)
PROVEN SOURCE OF ELEVATION JUNCTION OF ROADS ELEVATION 1391' SCALE 1" = 800'

STATE OF WEST VIRGINIA
DIVISION OF ENVIRONMENTAL PROTECTION
OFFICE OF OIL AND GAS

WELL TYPE : OIL GAS LIQUID INJECTION WASTE DISPOSAL IF "GAS" PRODUCTION STORAGE DEEP SHALLOW

LOCATION :
ELEVATION 1884' WATERSHED MOSSY BRANCH OF BIG CUB CREEK
DISTRICT CLEAR FORK COUNTY WYOMING QUADRANGLE OCEANA 7.5'
SURFACE OWNER U.S.A. R.D. BAILEY LAKE TRACT #1675 ACREAGE 1391.98
ROYALTY OWNER GEORGIA-PACIFIC CORPORATION LEASE ACREAGE 65,000
PROPOSED WORK : LEASE NO. 04157
DRILL CONVERT DRILL DEEPER REDRILL FRACTURE OR STIMULATE PLUG OFF OLD FORMATION PERFORATE NEW FORMATION PLUG AND ABANDON CLEAN OUT AND REPLUG OTHER
PHYSICAL CHANGE IN WELL (SPECIFY) _____ TARGET FORMATION DEVONIAN SHALE
ESTIMATED DEPTH 6400'

WELL OPERATOR EASTERN STATES OIL AND GAS, INC. DESIGNATED AGENT ROBERT ALLEY
ADDRESS P.O. BOX 2347 CHARLESTON, WV 25328 ADDRESS P.O. BOX 2347 CHARLESTON, WV 25328

DEEP WELL

6-6 266

MAY 12 2000

LONGITUDE 81°42'30" 13.200' LAT. 37°40'19.1" COUNTY NAME WYO PERMIT 1913

State of West Virginia
Division of Environmental Protection
Section of Oil and Gas

Reviewed ALB

Well Operator's Report of Well Work

Farm Name: US Army Corps of Engineer

Operator Well No.: Ritter 345

LOCATION: Elevation: 1,884.00

Quadrangle: Oceana

District: Clear Fork

County: Wyoming

Latitude: 13200 Feet South of
Longitude: 11780 Feet West of

Deg. 37 Minutes 42 Seconds 30
Deg. 81 Minutes 42 Seconds 30

Company: EASTERN STATES OIL & GAS INC.
P.O. Box 2347, 1710 Pennsylvania Avenue
Charleston, WV 25328

Agent: Steve Perdue

Inspector: Ofie Helmick

Permit Issued: 5/4/00

Well work commenced: 12/07/00

Well work completed: 04/06/01

Verbal Plugging

Permission granted on:

Rotary Rig X Cable Rig

Total Depth 6290 feet

Fresh water depths (ft) 349'

Salt water depths (ft) 920'

Is coal being mined in area?

Coal Depths (ft): 226', 254', 1973'

Casing & Tubing Size	Used in Drilling	Left in Well	Cement Fill Up Cu. Ft.
13-3/8"	51'	51'	GRTD
9-5/8"	541'	541'	218FT ³
7"	2177'	2177'	426 FT ³
4-1/2"	6279'	6279'	533 FT ³

OPEN FLOW DATA

Producing formation L. Shale/U. Shale/Berea/Big Lime

Pay Zone Depth (ft):

See Attach for details

Gas: Initial open flow NS

Final open flow 1380

Final open flow:

Time of open flow between initial and final tests

Static rock pressure 270 psig (surface pressure) after

Second producing formation

Gas: Initial open flow MCF/d

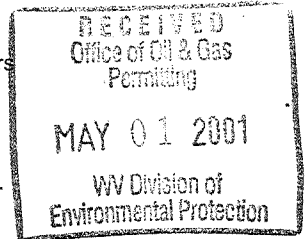
Oil: Initial open flow

Final open flow: MCF/d

Time of open flow between initial and final tests

Static rock pressure psig (surface pressure) after

NOTE: ON BACK OF THIS FORM PUT THE FOLLOWING: 1) DETAILS OF PERFORATED INTERVALS, FRACTURING OR STIMULATING, PHYSICAL CHANGE, ETC. 2) THE WELL LOG WHICH IS A SYSTEMATIC DETAILED GEOLOGICAL RECORD OF ALL FORMATIONS, INCLUDING COAL ENCOUNTERED BY THE WELLBORE.



For: BLAZER ENERGY CORPORATION

By: Derek Schind
Date: 11-30-01

MAY 4 2001

WV 1913

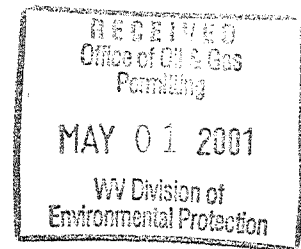
**EQUITABLE PRODUCTION COMPANY
WR-35 COMPLETION REPORT - Attachment
Well Treatment Summary**

Well: Ritter 345

API# 47-109-01913

Date	4/3/01	4/3/01	4/3/01	4/3/01	
Type Frac					
Acid, N ₂ , Foam, Water	N ²	N ²	N ²	Acid/N ²	
Zone Treated	L. Shale	U. Shale	Berea	Big Lime	
# Perfs	40	40	20	13	
From - To:	5341-6189	4183-5222	4005-4027	3244-3250	
BD Pressure @ psi	3463	3276	2803	2104	
ATP psi	3531	2610	2607	2358	
Avg. Rate, B=B/M, S= SCF/M	52,207 S	52,889 S	53,800 S	10 B 14,300 S	
Max. Treat Press psi	4096	3276	2802	3196	
ISIP psi	3310	2052	1850	1475	
	Final	Final	Final		
Frac Gradient	.70	.51	.53	.88	
10 min S-I Pressure	2023	1480	1160	2753	
Material Volume					
Sand-sks					
Water-bbl					
SCF N ₂	853,310	794,139	597,018	114,082	
Acid-gal	750 gal 7.9%	900 gal 7.9%	350 gal 7.9%	2000 gal 15.6%	
NOTES:					

TOP	BASE	FORMATION	REMARKS*
0	40	Top Soil & Shale	
40	128	Sand	
128	140	Shale	
140	219	Sandy Shale	
219	226	Shale	
226	228	Coal	
228	249	Sand	
249	254	Shale	
254	257	Coal	
257	274	Shale	
274	465	Sand	Damp @ 349'
465	565	Shale	
565	950	Sandy Shale	½" stream water @ 920'
950	990	Sand	
990	1015	Sandy Shale	
1015	1213	Sand	GT @ 1202', 1576', 1763', 1825', 2136'2207'=NS
1213	1267	Sandy Shale	
1267	1394	Sand	
1394	2146	Salt Sand	
2194	2376	Ravenciff	
2394	2434	Avis	
2530	2552	U Maxton	
2764	2796	M Maxton	



MAY 4 2001

2935	2971	L Maxton	GT @ 2960', 3178', 3396', 3489', 3738', 4112', 5045', 5449', 5667'=NS
3012	3074	L Lime	
3078	3414	Big Lime	
3532	3563	U Weir	
3608	3647	L Weir	
3979	3996	Sunbury	
3996	4036	Berea	
4298	4316	Gordon	
5068	5572	L Huron	
5572	5694	Java	
5694	5990	Angola	
5990	6263	Rhinestreet	
6263		Onondaga	
6290		TD	GT @ TD=NS

WYO 1913