

**POCAHONTAS LAND COORDINATES**

N 64,240.912  
E -7,255.961

9,850'

LATITUDE 37° 35' 00"

LONGITUDE 81° 32' 30"

14,600'

U.S. Steel Mining Company, LLC -  
Oil and Gas, Coal less Poca No. 3 Seam

Georgia Pacific Corporation - Fee Tract  
Blazer Energy Corporation - Oil and Gas Lessee

Georgia Pacific - Oil and Gas  
Coal (Less Poca. No. 3 Seam)  
Blazer Energy Corporation -  
Oil and Gas Lessee  
U.S. Steel Mining Company, LLC -  
Poca. No. 3 Seam  
CDX Gas, LLC - CBM Lessee

New Market Land Company -  
Oil and Gas, Coal (Less Poca. No. 3 Seam)  
Cabot Oil and Gas Corporation -  
Oil and Gas Lessee  
U.S. Steel Mining Company, LLC -  
Poca. No. 3 Seam  
CDX Gas, LLC - CBM Lessee

U.S. Steel Mining Company, LLC - Fee Tract  
CNG - Oil and Gas Lessee  
CDX Gas, LLC - CBM Lessee

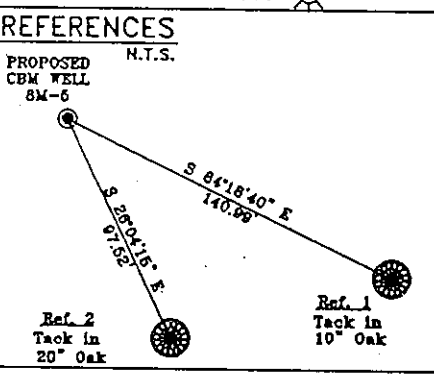
8M-5  
Proposed Gas Well  
Elev. 1912.78

8M-4a

1/2 Mile Radius

U.S. Steel Mining Company, LLC -  
Coal, Oil and Gas  
Blazer Energy Corporation -  
Oil and Gas Lessee  
CDX Gas, LLC - CBM Lessee

2.77  
1.87  
47-109-01834C  
47-109-01835C

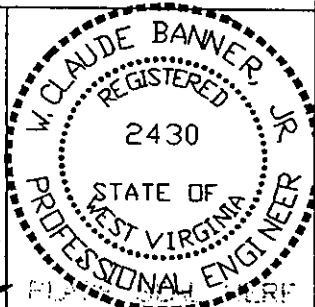


**Notes:**  
+ Topo Location  
No known domestic water supplies within 1000 feet.  
(+) Denotes location of well on USGS map.

FILE No. CDX  
DRAWING NAME \PLATS\8M-4  
Drawing Number 10-13-99-3SP  
SCALE 1" = 1000'  
MINIMUM DEGREE OF ACCURACY 1 : 2500  
PROVEN SOURCE OF ELEVATION USGS B.M. F44  
ELEV. 1565

I THE UNDERSIGNED, HEREBY CERTIFY THAT THIS PLAT IS CORRECT TO THE BEST OF MY KNOWLEDGE AND BELIEF AND SHOWS ALL THE INFORMATION REQUIRED BY LAW AND THE REGULATIONS ISSUED AND PRESCRIBED BY THE DEPARTMENT OF MINES.

(SIGNED) *W. Claude Banner, Jr.*  
R.P.E. 2430 R.P.S.



**STATE OF WEST VIRGINIA**  
**DIVISION OF ENVIRONMENTAL PROTECTION**  
**OFFICE OF OIL AND GAS**  
**NITRO, WV**

DATE MARCH 30 2000  
OPERATOR'S WELL No. 8M-5  
API WELL No. 47 - 109 - 01920C  
STATE COUNTY PERMIT

WELL TYPE: OIL GAS CBM LIQUID INJECTION WASTE DISPOSAL  
(IF "GAS") PRODUCTION X STORAGE DEEP SHALLOW

LOCATION: ELEVATION 1912.78 WATER SHED WOLF PEN BRANCH OF INDIAN CREEK  
DISTRICT CENTER COUNTY WYOMING  
QUADRANGLE PINEVILLE, WV

SURFACE OWNER U.S. STEEL MINING COMPANY, LLC ACREAGE 37977.66  
CBM ROYALTY OWNER U.S. STEEL MINING COMPANY, LLC LEASE ACREAGE

LEASE No. \_\_\_\_\_

PROPOSED WORK: DRILL X CONVERT DRILL DEEPER REDRILL FRACTURE OR  
STIMULATE PLUG OFF OLD FORMATION PERFORATE NEW  
FORMATION OTHER PHYSICAL CHANGE IN WELL (SPECIFY) \_\_\_\_\_

PLUG AND ABANDON CLEAN OUT AND REPLUG

TARGET FORMATION POCAHONTAS NO. 3 ESTIMATED DEPTH 1125' MAY 19 2000  
WELL OPERATOR CDX GAS, LLC MANAGER JOSEPH ZUPANICK  
ADDRESS P.O. BOX 609 ADDRESS PINEVILLE, WV 24874  
PINEVILLE, WV 24874

6-6 0

WYO 1920C

State of West Virginia  
Division of Environmental Protection  
Section of Oil & Gas

Reviewed AL

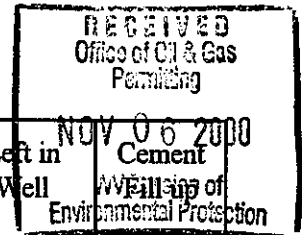
Well Operator's Report of Well Work

Farm name: U.S. Steel Mining Company, LLC Operator Well No: 8M-5  
Location: Elevation: 1913.56 Quadrangle: PINEVILLE  
District: CENTER County: WYOMING  
Latitude: 14600 Feet South of 37 Deg. 35 Min. 00 Sec.  
Longitude: 9850 Feet West of 81 Deg. 32 Min. 30 Sec.

Company: CDX Gas, LLC  
5485 BELTLINE ROAD, SUITE 280  
DALLAS, TX 75240-0000

Agent: JOSEPH A. ZUPANICK

Inspector: OFIE HELMICK  
Permit Issued: 04/03/00  
Well Work commenced: 04/22/00  
Well Work completed: 05/22/00  
Verbal plugging  
Permission granted on:  
Rotary x Cable \_\_\_\_\_ Rig  
Total depth (ft) 1155  
Fresh water depths (ft) N/A  
Salt water depths (ft) N/A  
Is coal being mined in the area (Y/N)? Y  
Coal depths (ft): 22, 649, 1028, 1122



Casing & Tubing Size	Used in Drilling	Left in Well	Cement Volume
13 7/8"	35'	35'	9 Ft <sup>3</sup>
9 5/8"	263.85'	263.85'	83 Ft <sup>3</sup>
7"	1108.93'	1108.93'	167 Ft <sup>3</sup>
2 7/8"	1122'		

OPEN FLOW DATA

Producing formation Pocahontas No. 3 Seam and Penn Coals Pay zone depth (ft) \_\_\_\_\_  
Gas: Initial open flow N/A Mcf/d Oil: Initial open flow \_\_\_\_\_ Bbl/d  
Final open flow N/A Mcf/d Final open flow \_\_\_\_\_ Bbl/d  
Time of open flow between initial and final tests: \_\_\_\_\_ hours  
Static rock pressure \_\_\_\_\_ psig (surface pressure) after \_\_\_\_\_ hours  
Second Producing formation \_\_\_\_\_ Pay zone depth (ft) \_\_\_\_\_  
Gas: Initial open flow N/A Mcf/d Oil: Initial open flow \_\_\_\_\_ Bbl/d  
Final open flow N/A Mcf/d Final open flow \_\_\_\_\_ Bbl/d  
Time of open flow between initial and final tests: \_\_\_\_\_ hours  
Static rock pressure \_\_\_\_\_ psig (surface pressure) after \_\_\_\_\_ hours

Note: ON BACK OF THIS FORM, PUT THE FOLLOWING: 1) DETAILS OF PERFORATED INTERVALS, FRACTURING OR STIMULATING, PHYSICAL CHANGE, ETC. 2) THE WELL LOG WHICH IS A SYSTEMATIC DETAILED GEOLOGICAL RECORD OF ALL FORMATIONS, INCLUDING COAL ENCOUNTERED BY THE WELLBORE.

For: CDX Gas, LLC  
By: J.A. Zupanick  
Date: 10/20/00

NOV 23 2000

WYO 1920 C

Operator: 8M-5  
 API No. 47-109-01920 C  
 Location: Pineville

Details of Perforated Intervals, Fracturing or Stimulation, Physical Change, Etc.

Well Log & Geologic Record

Formation	Top	Bottom
Sandstone	0	19
Shale	19	22
Coal	22	24
Shale	24	29
Sandstone	29	109
Sandy Shale	109	123
Shale	123	139
Sandstone	139	194
Sandy Shale	194	289
Sandstone	289	326
Sandy Shale	326	357
Shale	357	384
Sandstone	384	386
Sandy Shale	386	397
Sandstone	397	508
Shale	508	529
Sandstone	529	647
Shale	647	649
Coal	649	650
Shale	650	665
Sandstone	665	724
Shale	724	742
Sandstone	742	746
Shale	746	859
Sandstone	859	903
Shale	903	909
Sandstone	909	984
Sandy Shale	984	1013
Shale	1013	1028
Coal	1028	1029
Shale	1029	1068
Sandstone	1068	1120
Shale	1120	1122
Coal	1122	1127
Shale	1127	1155

RECEIVED  
 Office of Oil & Gas  
 Permitting  
 NOV 06 2000  
 WV Division of  
 Environmental Protection