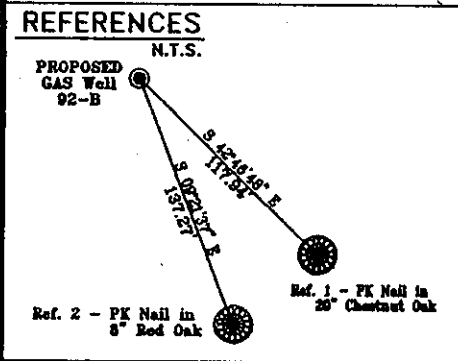
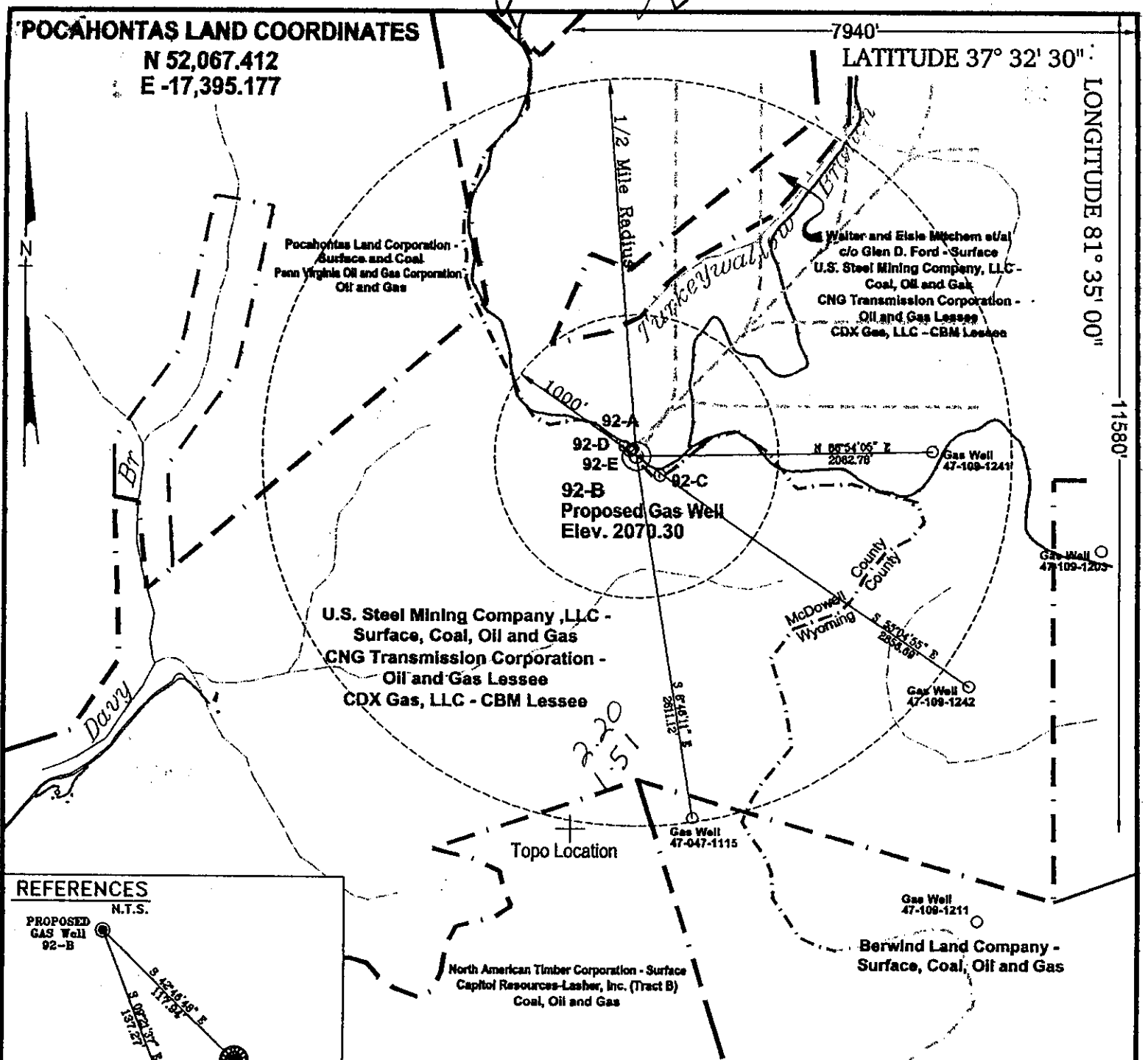


POCAHONTAS LAND COORDINATES

N 52,067.412
E -17,395.177

7940'
LATITUDE 37° 32' 30"

LONGITUDE 81° 35' 00"

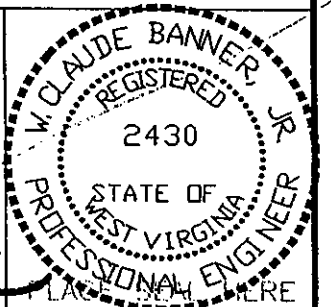


Notes:
No known domestic water supplies within 1000 feet.
(+) Denotes location of well on USGS map.

FILE No. CDXGAS
DRAWING NAME \CDXGAS\PLATS\
Drawing Number 12-7-00-2SP
SCALE 1" = 1000'
MINIMUM DEGREE OF ACCURACY 1 : 2500
PROVEN SOURCE OF ELEVATION GPS - GLOBAL POSITIONING SYSTEM

I THE UNDERSIGNED, HEREBY CERTIFY THAT THIS PLAT IS CORRECT TO THE BEST OF MY KNOWLEDGE AND BELIEF AND SHOWS ALL THE INFORMATION REQUIRED BY LAW AND THE REGULATIONS ISSUED AND PRESCRIBED BY THE DEPARTMENT OF MINES.

(SIGNED) W. Claude Banner, Jr.
R.P.E. 2430 R.P.S.



STATE OF WEST VIRGINIA
DIVISION OF ENVIRONMENTAL PROTECTION
OFFICE OF OIL AND GAS
NITRO, WV

DATE DECEMBER 11, 2000
OPERATOR'S WELL No. 92-B
API WELL No. 47 - 109 - 01977C
STATE COUNTY PERMIT

WELL TYPE: OIL GAS CBM LIQUID INJECTION WASTE DISPOSAL
(IF "GAS") PRODUCTION X STORAGE DEEP SHALLOW

LOCATION: ELEVATION 2070.30 WATER SHED TURKEYWALLOW BRANCH OF INDIAN CREEK; UNNAMED TRIBUTARY OF DAVY BRANCH OF TUG FORK
DISTRICT CENTER COUNTY WYOMING
QUADRANGLE PINEVILLE, WV

SURFACE OWNER U.S. STEEL MINING COMPANY, LLC ACREAGE 37977.66
CBM ROYALTY OWNER U.S. STEEL MINING COMPANY, LLC LEASE ACREAGE 4498.52

LEASE No. _____

PROPOSED WORK: DRILL X CONVERT DRILL DEEPER REDRILL FRACTURE OR STIMULATE PLUG OFF OLD FORMATION PERFORATE NEW FORMATION OTHER PHYSICAL CHANGE IN WELL (SPECIFY) _____

PLUG AND ABANDON _____ CLEAN OUT AND REPLUG _____

TARGET FORMATION POCAHONTAS NO. 3 SEAM & PENN COALS ESTIMATED DEPTH 1348'
WELL OPERATOR CDX GAS, LLC VICE PRESIDENT-OPERATIONS JOSEPH ZUPANICK
ADDRESS P.O. BOX 609 ADDRESS P.O. BOX 609
PINEVILLE, WV 24874 6-6 272 PINEVILLE, WV 24874

horizontal well
WYO 1977C
JAN 12 2001

State of West Virginia
Division of Environmental Protection
Section of Oil & Gas

Reviewed: [Signature]

Well Operator's Report of Well Work

Farm name: U.S. Steel Mining Company

Operator Well No: 92-B

Location: Elevation: 2072.57

Quadrangle: Pineville

District: Center

County: WYOMING

Latitude: 11580 Feet South of 37 Deg. 32 Min. 30 Sec.
Longitude: 7940 Feet West of 81 Deg. 35 Min. 00 Sec.

RECEIVED
Office of Oil & Gas
Permitting

OCT 11 2002

WV Department of
Environmental Protection

Company: CDX Gas, LLC
P.O. Box 609
Pineville, WV 24874

Agent: JOSEPH A. ZUPANICK

Inspector: Ronnie Scott
Permit Issued: 1/11/01
Well Work commenced: 5/12/01
Well Work completed: 6/01/02
Verbal plugging
Permission granted on:
Rotary x Cable _____ Rig
Total depth (ft) 1412.58' TVD
Fresh water depths (ft) N/A
Salt water depths (ft) N/A
Is coal being mined in the area (Y/N)? Y
Coal depths (ft): 196', 270', 571', 600', 685', 859', 946', 951', 1233', 1334', 1357'

Casing & Tubing Size	Used in Drilling	Left in Well	Cement Fill up
13 3/8"	27'	27'	Surface
9 5/8"	255'	255'	Surface
7"	1002'	1002'	Surface

OPEN FLOW DATA

Producing formation Pocahontas No. 3 Seam Pay zone depth (ft) 1334'
 Gas: Initial open flow N/A Mcf/d Oil: Initial open flow _____ Bbl/d
 Final open flow N/A Mcf/d Final open flow _____ Bbl/d
 Time of open flow between initial and final tests: _____ hours
 Static rock pressure _____ psig (surface pressure) after _____ hours

Second Producing formation _____ Pay zone depth (ft) _____
 Gas: Initial open flow N/A Mcf/d Oil: Initial open flow _____ Bbl/d
 Final open flow N/A Mcf/d Final open flow _____ Bbl/d
 Time of open flow between initial and final tests: _____ hours
 Static rock pressure _____ psig (surface pressure) after _____ hours

Note: ON BACK OF THIS FORM, PUT THE FOLLOWING: 1) DETAILS OF PERFORATED INTERVALS, FRACTURING OR STIMULATING, PHYSICAL CHANGE, ETC. 2) THE WELL LOG WHICH IS A SYSTEMATICK DETAILED GEOLOGICAL RECORD OF ALL FORMATIONS, INCLUDING COAL ENCOUNTERED BY THE WELLBORE.

Steven Pauley
For: CDX Gas, LLC
By: [Signature]
Date: 10-8-02

OCT 25 2002

WYO 1977 C

Operator: 92-B
API No. 47- 109-01977 C
Location: Wyoming County

Details of Perforated Intervals, Fracturing or Stimulation, Physical Change, Etc.

N/A

Well Log & Geologic Record - Depths from K.B.

Formation	Top	Bottom
Overburden	0	8
Sandy Shale	8	196
Coal	196	198
Sandy Shale	198	270
Coal	270	271
Shale	271	360
Sandy Shale	360	397
Shale	397	404
Sandy Shale	404	430
Shale	430	446
Sandy Shale	446	460
Shale	460	478
Sandy Shale	478	521
Shale	521	544
Sandy Shale	544	559
Shale	559	571
Coal	571	572
Shale	572	600
Coal	600	601
Shale	601	615
Sandy Shale	615	623
Shale	623	631
Sandy Shale	631	685
Coal	685	687
Sandy Shale	687	724
Shale	724	732
Sandy Shale	732	773
Shale	773	776
Sandy Shale	776	814
Shale	814	8400
Sandy Shale	840	859
Coal	859	860
Shale	860	864

RECEIVED
Office of Oil & Gas
Permitting
OCT 11 2002
WV Department of
Environmental Protection

OCT 20 2002

