

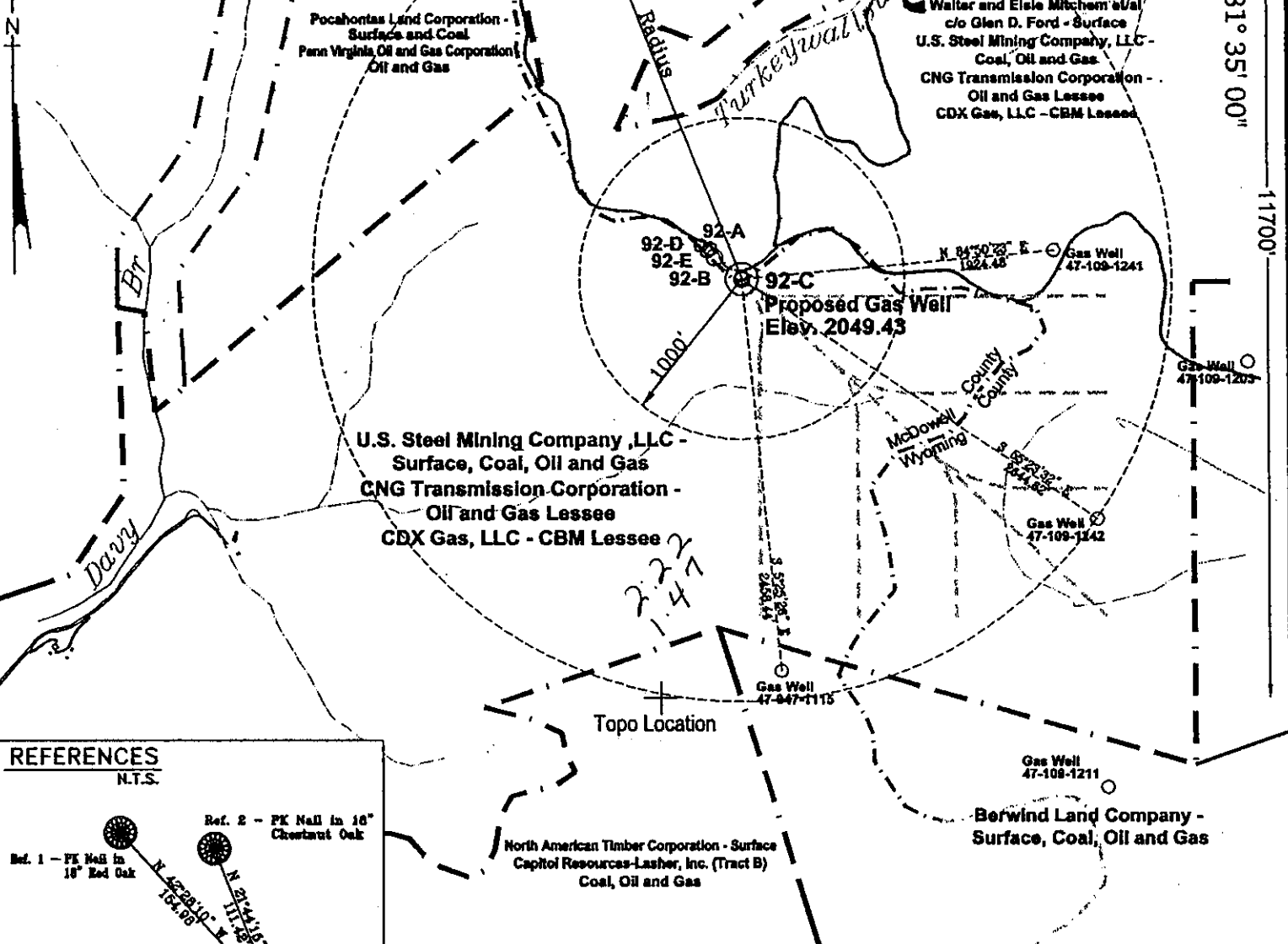
POCAHONTAS LAND COORDINATES

N 51,934.255
E -17,229.452

7740'

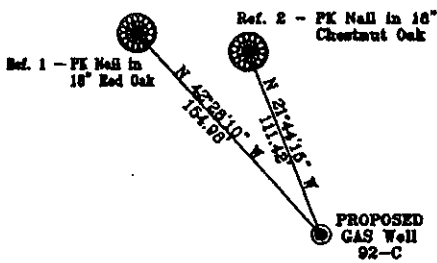
LATITUDE 37° 32' 30"

LONGITUDE 81° 35' 00"



REFERENCES

N.T.S.



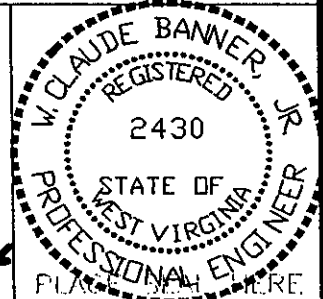
Notes:

No known domestic water supplies within 1000 feet.
(+) Denotes location of well on USGS map.

FILE No. CDXGAS
DRAWING NAME CDXGAS\PLAT
Drawing Number 12-7-00-3SP
SCALE 1" = 1000'
MINIMUM DEGREE OF ACCURACY 1 : 2500
PROVEN SOURCE OF ELEVATION GPS - GLOBAL POSITIONING SYSTEM

I THE UNDERSIGNED, HEREBY CERTIFY THAT THIS PLAT IS CORRECT TO THE BEST OF MY KNOWLEDGE AND BELIEF AND SHOWS ALL THE INFORMATION REQUIRED BY LAW AND THE REGULATIONS ISSUED AND PRESCRIBED BY THE DEPARTMENT OF MINES.

(SIGNED) W. Claude Banner, Jr.
R.P.E. 2430 R.P.S.



**STATE OF WEST VIRGINIA
DIVISION OF ENVIRONMENTAL PROTECTION
OFFICE OF OIL AND GAS
NITRO, WV**

DATE DECEMBER 11, 2000
OPERATOR'S WELL No. 92-C
API WELL No. 47-109-01978C
STATE COUNTY PERMIT

WELL TYPE: OIL GAS CBM LIQUID INJECTION WASTE DISPOSAL
(IF "GAS") PRODUCTION X STORAGE DEEP SHALLOW
LOCATION: ELEVATION 2049.43 WATER SHED TURKEYWALLOW BRANCH OF INDIAN CREEK; UNNAMED TRIBUTARY OF DAVY BRANCH OF TUG FORK
DISTRICT CENTER COUNTY WYOMING
QUADRANGLE PINEVILLE, WV

SURFACE OWNER U.S. STEEL MINING COMPANY, LLC ACREAGE 37977.66
CBM ROYALTY OWNER U.S. STEEL MINING COMPANY, LLC LEASE ACREAGE 4498.52
LEASE No. _____

PROPOSED WORK: DRILL X CONVERT DRILL DEEPER REDRILL FRACTURE OR STIMULATE PLUG OFF OLD FORMATION PERFORATE NEW FORMATION OTHER PHYSICAL CHANGE IN WELL (SPECIFY) _____

PLUG AND ABANDON CLEAN OUT AND REPLUG
TARGET FORMATION POCAHONTAS NO. 3 SEAM & PENN COALS ESTIMATED DEPTH 1327'
WELL OPERATOR CDX GAS, LLC VICE PRESIDENT-OPERATIONS JOSEPH ZUPANICK
ADDRESS P.O. BOX 609 ADDRESS P.O. BOX 609
PINEVILLE, WV 24874 PINEVILLE, WV 24874

horizontal well

6-6 277

JAN 12 2001

WYO 1978 C

State of West Virginia
Division of Environmental Protection
Section of Oil & Gas

Reviewed

Well Operator's Report of Well Work

Farm name: U.S. Steel Mining Company

Operator Well No: 92-C

Location: Elevation: 2050.68

Quadrangle: Pineville

District: Center

County: WYOMING

Latitude: 11700 Feet South of 37 Deg. 32 Min. 30 Sec.
Longitude: 7740 Feet West of 81 Deg. 35 Min. 00 Sec.

RECEIVED
Office of Oil & Gas
Permitting

OCT 11 2002

WV Department of
Environmental Protection

Company: CDX Gas, LLC
P.O. Box 609
Pineville, WV 24874

Agent: JOSEPH A. ZUPANICK

Inspector: Ronnie Scott
Permit Issued: 1/11/01
Well Work commenced: 6/06/01
Well Work completed: 5/19/02
Verbal plugging
Permission granted on:
Rotary x Cable _____ Rig
Total depth (ft) 1368'
Fresh water depths (ft) N/A
Salt water depths (ft) N/A
Is coal being mined in the area (Y/N)? Y
Coal depths (ft): 174', 547', 587', 670', 931', 1312'

| Casing & Tubing Size | Used in Drilling | Left in Well | Cement Fill up |
|----------------------|------------------|--------------|----------------|
| 13 3/8" | 26' | 26' | Surface |
| 9 5/8" | 1108' | 1108' | Surface |
| 7" | 300' | 300' | Surface |
| | | | |

OPEN FLOW DATA

Producing formation Pocahontas No. 3 Seam
 Gas: Initial open flow N/A Mcf/d Oil: Pay zone depth (ft) 1312'
 Final open flow N/A Mcf/d Initial open flow _____ Bbl/d
 Time of open flow between initial and final tests: _____ hours
 Final open flow _____ Bbl/d
 Static rock pressure _____ psig (surface pressure) after _____ hours

Second Producing formation _____
 Gas: Initial open flow N/A Mcf/d Oil: Pay zone depth (ft) _____
 Final open flow N/A Mcf/d Initial open flow _____ Bbl/d
 Time of open flow between initial and final tests: _____ hours
 Final open flow _____ Bbl/d
 Static rock pressure _____ psig (surface pressure) after _____ hours

Note: ON BACK OF THIS FORM, PUT THE FOLLOWING: 1) DETAILS OF PERFORATED INTERVALS, FRACTURING OR STIMULATING, PHYSICAL CHANGE, ETC. 2) THE WELL LOG WHICH IS A SYSTEMATICK DETAILED GEOLOGICAL RECORD OF ALL FORMATIONS, INCLUDING COAL ENCOUNTERED BY THE WELLBORE.

For: Steven Pauley
CDX Gas, LLC
By:
Date: 10-8-02

OCT 25 2002

WYO 1978 C

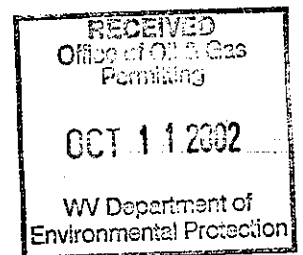
Operator: 92-C
API No. 47- 109-01978 C
Location: Wyoming County

Details of Perforated Intervals, Fracturing or Stimulation, Physical Change, Etc.

N/A

Well Log & Geologic Record - Depths from K.B.

| Formation | Top | Bottom |
|-------------|-----|--------|
| Overburden | 0 | 7 |
| Sandy shale | 7 | 100 |
| Shale | 100 | 130 |
| Sandy shale | 130 | 142 |
| Shale | 142 | 147 |
| Sandy shale | 147 | 156 |
| Shale | 156 | 174 |
| Coal | 174 | 175 |
| Shale | 175 | 184 |
| Sandy shale | 184 | 250 |
| Shale | 250 | 335 |
| Sandy shale | 335 | 388 |
| Shale | 388 | 390 |
| Sandy shale | 390 | 409 |
| Shale | 409 | 455 |
| Sandy shale | 455 | 505 |
| Shale | 505 | 524 |
| Sandy shale | 524 | 533 |
| Shale | 533 | 547 |
| Coal | 547 | 549 |
| Shale | 549 | 560 |
| Sandy shale | 560 | 581 |
| Shale | 581 | 587 |
| Coal | 587 | 589 |
| Shale | 589 | 617 |
| Sandy Shale | 617 | 670 |
| Coal | 670 | 673 |
| Sandy Shale | 673 | 679 |
| Shale | 679 | 683 |
| Sandy Shale | 683 | 694 |
| Shale | 694 | 712 |
| Sandy Shale | 712 | 796 |
| Shale | 796 | 824 |



OCT 25 2002

Conti.

| | | |
|-------------|------|------|
| Sandy Shale | 824 | 841 |
| Shale | 841 | 847 |
| Sandy Shale | 847 | 866 |
| Shale | 866 | 876 |
| Sandy Shale | 876 | 902 |
| Shale | 902 | 931 |
| Coal | 931 | 934 |
| Shale | 934 | 1053 |
| Sandy Shale | 1053 | 1075 |
| Sandstone | 1075 | 1170 |
| Sandy Shale | 1170 | 1174 |
| Shale | 1174 | 1178 |
| Sandy Shale | 1178 | 1186 |
| Shale | 1186 | 1212 |
| Sandy Shale | 1212 | 1307 |
| Shale | 1307 | 1312 |
| Coal | 1312 | 1316 |
| Shale | 1316 | 1340 |
| Sandy Shale | 1340 | 1368 |
| | | |

RECEIVED
Office of Oil & Gas
Permitting
OCT 11 2002
WV Department of
Environmental Protection

WYO 1978 C