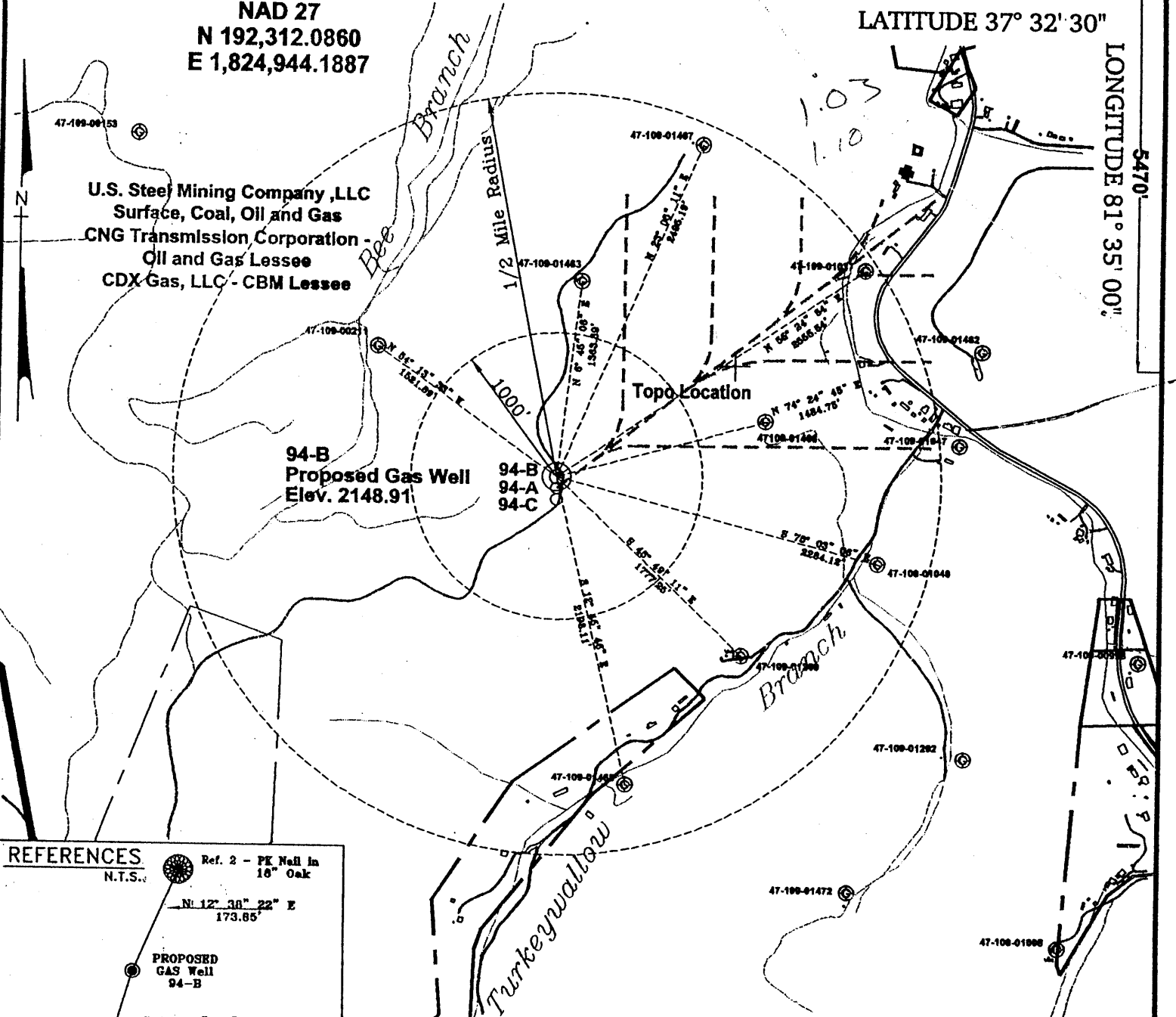


WEST VIRGINIA STATE PLANE COORDINATES

NAD 27
 N 192,312.0860
 E 1,824,944.1887

5850'
 LATITUDE 37° 32' 30"

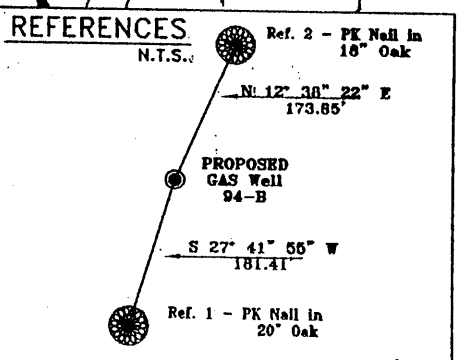
LONGITUDE 81° 35' 00"



U.S. Steel Mining Company, LLC
 Surface, Coal, Oil and Gas
 CNG Transmission Corporation
 Oil and Gas Lessee
 CDX Gas, LLC - CBM Lessee

94-B
 Proposed Gas Well
 Elev. 2148.91

94-A
 94-C

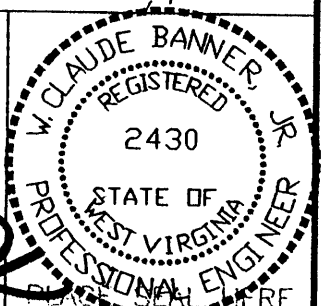


Notes:
 No known domestic water supplies within 1000 feet.
 (+) Denotes location of well on USGS map.

FILE No. CDXGAS
 DRAWING NAME \CDXGAS\PLAT
 FILE NAME 94-B
 SCALE 1" = 1000'
 MINIMUM DEGREE OF ACCURACY 1 : 2500
 PROVEN SOURCE OF ELEVATION GPS - GLOBAL POSITIONING SYSTEM

I THE UNDERSIGNED, HEREBY CERTIFY THAT THIS PLAT IS CORRECT TO THE BEST OF MY KNOWLEDGE AND BELIEF AND SHOWS ALL THE INFORMATION REQUIRED BY LAW AND THE REGULATIONS ISSUED AND PRESCRIBED BY THE DEPARTMENT OF MINES.

(SIGNED) *W. Claude Banner, Jr.*
 R.P.E. 2430 R.P.S. _____



**STATE OF WEST VIRGINIA
 DIVISION OF ENVIRONMENTAL PROTECTION
 OFFICE OF OIL AND GAS
 NITRO, WV**

DATE MARCH 30, 2001
 OPERATOR'S WELL No. 94-B
 API WELL No. _____
47 - 109 - 02035C
 STATE COUNTY PERMIT

WELL TYPE: OIL GAS CBM LIQUID INJECTION WASTE DISPOSAL
 (IF "GAS") PRODUCTION X STORAGE DEEP SHALLOW
 LOCATION: ELEVATION 2148.91 WATER SHED BEE BRANCH OF INDIAN CREEK
 DISTRICT CENTER COUNTY WYOMING
 QUADRANGLE PINEVILLE, WV

SURFACE OWNER U.S. STEEL MINING COMPANY, LLC ACREAGE 37977.66
 CBM ROYALTY OWNER U.S. STEEL MINING COMPANY, LLC LEASE ACREAGE 4498.52

LEASE No. _____
 PROPOSED WORK: DRILL X CONVERT DRILL DEEPER REDRILL FRACTURE OR STIMULATE PLUG OFF OLD FORMATION PERFORATE NEW FORMATION OTHER PHYSICAL CHANGE IN WELL (SPECIFY) _____

PLUG AND ABANDON CLEAN OUT AND REPLUG
 TARGET FORMATION POCAHONTAS NO. 3 AND PENN. COALS
 WELL OPERATOR CDX GAS, LLC ESTIMATED DEPTH 1386'
 ADDRESS P.O. BOX 609 DESIGNATED AGENT JOSEPH ZUPANICK
PINEVILLE, WV 24874 ADDRESS P.O. BOX 609
PINEVILLE, WV 24874

MAY 18 2001

WV0 2035 C

State of West Virginia
Division of Environmental Protection
Section of Oil & Gas

MB

Well Operator's Report of Well Work

Farm name: U.S. Steel Mining Company

Operator Well No: 94-B

Location: Elevation: 2148.91

Quadrangle: Pineville

District: Center

County: WYOMING

Latitude: 5850 Feet South of 37 Deg. 32 Min. 30 Sec.
Longitude: 5470 Feet West of 81 Deg. 35 Min. 00 Sec.

REC-117
Office of Oil & Gas
Permitting
SEP 03 2003
WV Department of
Environmental Protection

Company: CDX Gas, LLC
P.O. Box 609
Pineville, WV 24874

Agent: JOSEPH A. ZUPANICK

Inspector: Ronnie Scott
Permit Issued: 5/16/01
Well Work commenced: 6/19/03
Well Work completed: 7/22/03
Verbal plugging
Permission granted on:
Rotary x Cable _____ Rig
Total depth (ft) 1417'
Fresh water depths (ft) N/A
Salt water depths (ft) N/A
Is coal being mined in the area (Y/N)? Y
Coal depths (ft): 274', 657', 731', 1033', 1035', 1037', 1384'

Casing & Tubing Size	Used in Drilling	Left in Well	Cement Fill up
13 3/8"	29'	29'	20cuft
9 5/8"	707'	707'	221cuft
7"	1369'	1369'	206 cuft
2 7/8"	1466'	1466'	Hanging

OPEN FLOW DATA

Producing formation Pocahontas No.3

Pay zone depth (ft) 1384'

Gas: Initial open flow N/A Mcf/d

Oil: Initial open flow _____ Bbl/d

Final open flow N/A Mcf/d

Final open flow _____ Bbl/d

Time of open flow between initial and final tests: _____ hours

Static rock pressure _____ psig (surface pressure) after _____ hours

Second Producing formation _____

Pay zone depth (ft)

Gas: Initial open flow _____ Mcf/d

Oil: Initial open flow _____ Bbl/d

Final open flow _____ Mcf/d

Final open flow _____ Bbl/d

Time of open flow between initial and final tests: _____ hours

Static rock pressure _____ psig (surface pressure) after _____ hours

Note: ON BACK OF THIS FORM, PUT THE FOLLOWING: 1) DETAILS OF PERFORATED INTERVALS, FRACTURING OR STIMULATING, PHYSICAL CHANGE, ETC. 2) THE WELL LOG WHICH IS A SYSTEMATICK DETAILED GEOLOGICAL RECORD OF ALL FORMATIONS, INCLUDING COAL ENCOUNTERED BY THE WELLBORE.

For: Steve Pauley
CDX Gas, LLC
By: Steve Pauley
Date: 8-29-03

WYO 2035 C

SEP 18 2003

Sandstone	1034	1035
Coal	1035	1036
Sandstone	1036	1037
Coal	1037	1038
Shale	1038	1045
Sandstone	1045	1080
Shale	1080	1143
Sandstone	1143	1265
Shale	1265	1300
Sandy Shale	1300	1368
Shale	1368	1384
Coal	1384	1387
Shale	1387	1417
Bottom		

DEPT.
 Office of Oil & Gas
 Permitting

 SEP 03 2003

 WV Department of
 Environmental Protection

WYO 2035 C