

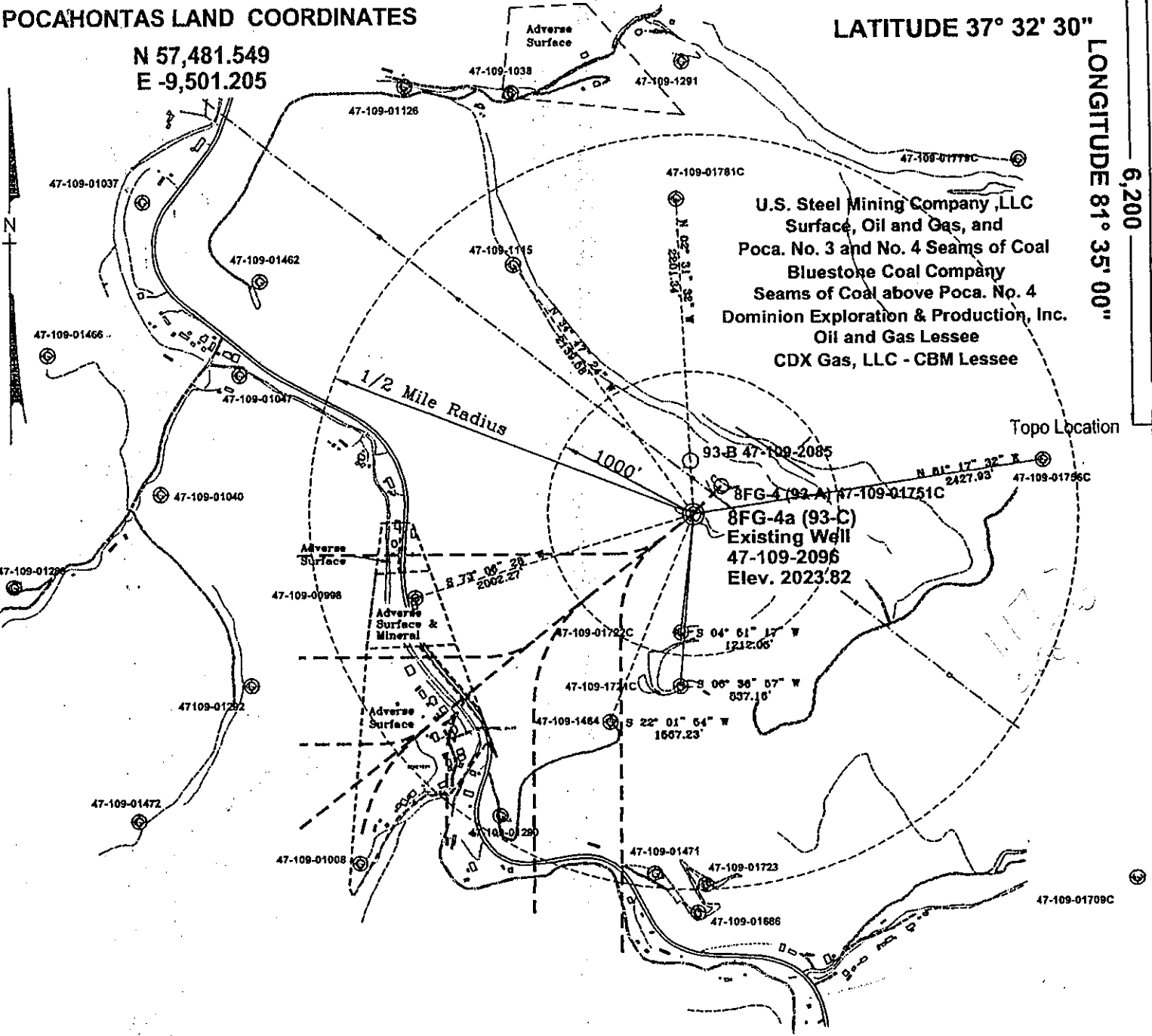
POCAHONTAS LAND COORDINATES

N 57,481.549
E -9,501.205

LATITUDE 37° 32' 30"

LONGITUDE 81° 35' 00"

6,200



U.S. Steel Mining Company, LLC
Surface, Oil and Gas, and
Poca. No. 3 and No. 4 Seams of Coal
Bluestone Coal Company
Seams of Coal above Poca. No. 4
Dominion Exploration & Production, Inc.
Oil and Gas Lessee
CDX Gas, LLC - CBM Lessee

Notes:

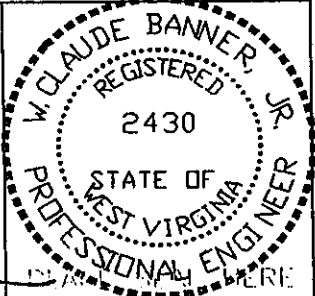
No known domestic water supplies within 1000 feet.

(+) Denotes location of well on USGS map.

FILE No. CDXGAS
DRAWING NAME \PLAT
FILE NAME 8FG-4-2-14-02
SCALE 1" = 1000'
MINIMUM DEGREE OF
ACCURACY 1 : 2500
PROVEN SOURCE OF
ELEVATION BENCH-MARK
F-44 EL. 1565

I THE UNDERSIGNED, HEREBY CERTIFY THAT THIS PLAT IS CORRECT TO THE BEST OF MY KNOWLEDGE AND BELIEF AND SHOWS ALL THE INFORMATION REQUIRED BY LAW AND THE REGULATIONS ISSUED AND PRESCRIBED BY THE DEPARTMENT OF MINES.

(SIGNED) *Claude Banner*
R.P.E. 2430 R.P.S.



STATE OF WEST VIRGINIA
DIVISION OF ENVIRONMENTAL PROTECTION
OFFICE OF OIL AND GAS
NITRO, WV

DATE APRIL 1, 2002
OPERATOR'S WELL No. 8FG-4a (93-C)
API WELL No. 47 - 109 - 2096 W
STATE COUNTY PERMIT

WELL TYPE: OIL GAS CBM LIQUID INJECTION WASTE DISPOSAL
(IF "GAS") PRODUCTION X STORAGE DEEP SHALLOW

LOCATION: ELEVATION 2023.82 WATER SHED UNNAMED TRIBUTARY OF INDIAN CREEK
DISTRICT CENTER COUNTY WYOMING
QUADRANGLE PINEVILLE, WV

SURFACE OWNER U.S. STEEL MINING COMPANY, LLC ACREAGE 37977.66
CBM ROYALTY OWNER U.S. Steel Mining Company, LLC, Robert Bailey, Charles W. Cook, Cindy Graybeal Whittington, Merle Morgan LEASE ACREAGE
Zelma O'Neal, Phyllis Goode, Patricia Smith, Jackie Wheeler, Barney Wheeler, Chester Wheeler, Joyce Allen, Agnes Wheeler, and Ronald Mathis

LEASE No. _____

PROPOSED WORK: DRILL CONVERT DRILL DEEPER REDRILL X FRACTURE OR
STIMULATE PLUG OFF OLD FORMATION PERFORATE NEW
FORMATION OTHER PHYSICAL CHANGE IN WELL (SPECIFY) MAY 17 2002

PLUG AND ABANDON CLEAN OUT AND REPLUG
TARGET FORMATION POCAHONTAS NO. 3 AND PENN. COALS
WELL OPERATOR CDX GAS, LLC ESTIMATED DEPTH 1270'
ADDRESS P.O. BOX 609 DESIGNATED AGENT JOSEPH ZUPANICK
PINEVILLE, WV 24874 ADDRESS P.O. BOX 609
PINEVILLE, WV 24874

6-6 272

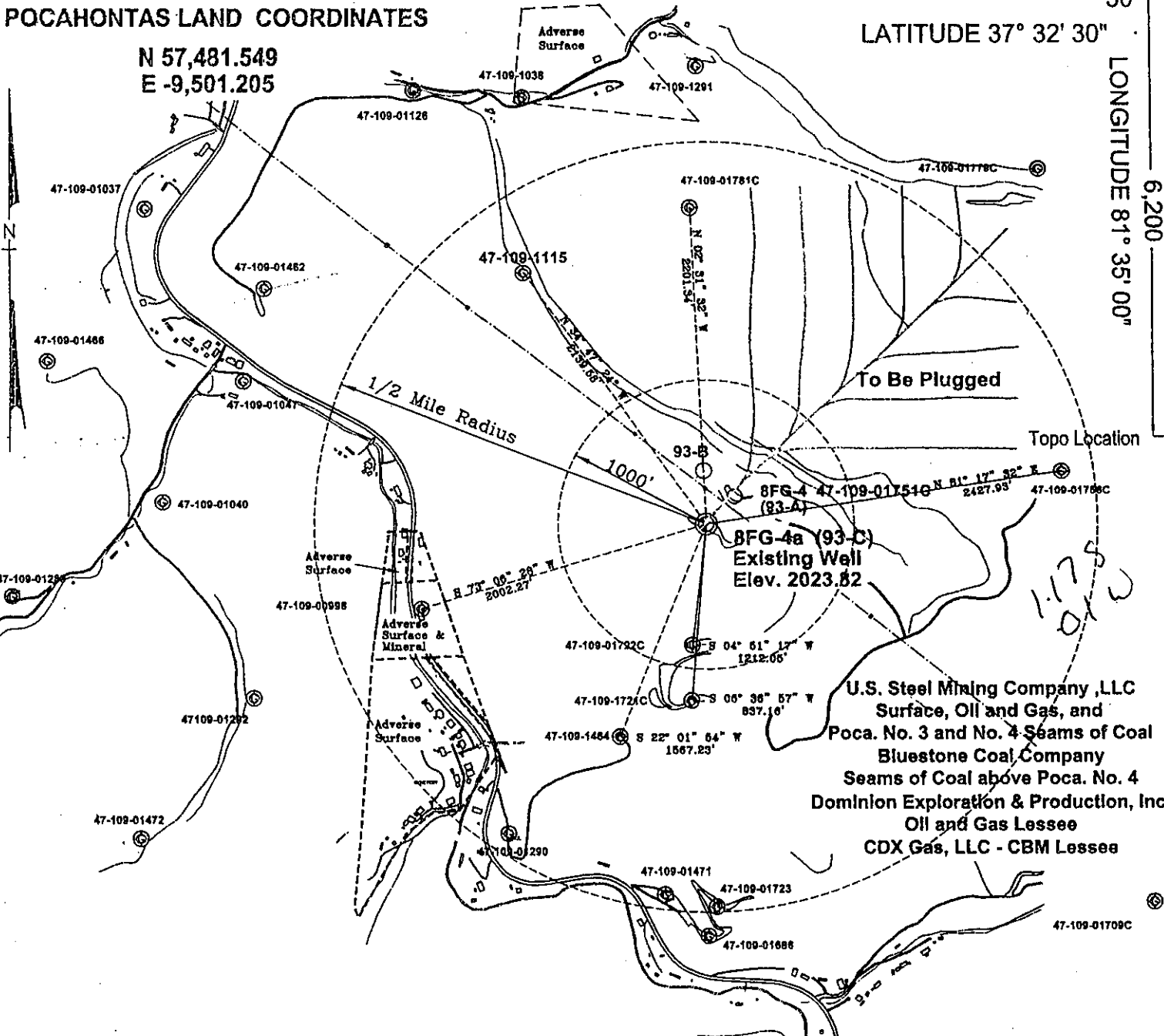
WYO 2096 W

POCAHONTAS LAND COORDINATES

N 57,481.549
E -9,501.205

LATITUDE 37° 32' 30"

50'
LONGITUDE 81° 35' 00"



U.S. Steel Mining Company, LLC
Surface, Oil and Gas, and
Poca. No. 3 and No. 4 Seams of Coal
Bluestone Coal Company
Seams of Coal above Poca. No. 4
Dominion Exploration & Production, Inc.
Oil and Gas Lessee
CDX Gas, LLC - CBM Lessee

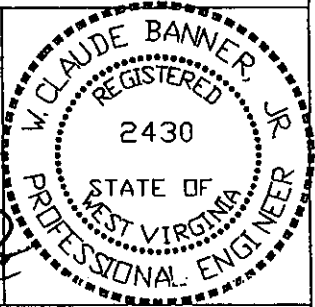
Notes:

Proposed Well Location 8FG-4A (93-C) is an Existing Well Location.
No known domestic water supplies within 1000 feet.
(+) Denotes location of well on USGS map.

FILE No. CDXGAS
DRAWING NAME \CDXGAS\PLAT
FILE NAME 93-A-8FG-4
SCALE 1" = 1000'
MINIMUM DEGREE OF ACCURACY 1 : 2500
PROVEN SOURCE OF ELEVATION BENCH-MARK
F-44 EL. 1565

I THE UNDERSIGNED, HEREBY CERTIFY THAT THIS PLAT IS CORRECT TO THE BEST OF MY KNOWLEDGE AND BELIEF AND SHOWS ALL THE INFORMATION REQUIRED BY LAW AND THE REGULATIONS ISSUED AND PRESCRIBED BY THE DEPARTMENT OF MINES.

(SIGNED) *W. Claude Banner, Jr.*
R.P.E. 2430 R.P.S.



STATE OF WEST VIRGINIA
DIVISION OF ENVIRONMENTAL PROTECTION
OFFICE OF OIL AND GAS
NITRO, WV

DATE September 6, 2001
OPERATOR'S WELL No. 8FG-4A
API WELL No. 47 - 109 - 02096 C
STATE COUNTY PERMIT

WELL TYPE: OIL GAS CBM LIQUID INJECTION WASTE DISPOSAL
(IF "GAS") PRODUCTION X STORAGE DEEP SHALLOW
LOCATION: ELEVATION 2023.82 WATER SHED UNNAMED TRIBUTARY OF INDIAN CREEK
DISTRICT CENTER COUNTY WYOMING
QUADRANGLE PINEVILLE, WV

SURFACE OWNER U.S. STEEL MINING COMPANY, LLC ACREAGE 37977.66
CBM ROYALTY OWNER U.S. STEEL MINING COMPANY, LLC LEASE ACREAGE 4498.52

LEASE No.
PROPOSED WORK: DRILL X CONVERT DRILL DEEPER REDRILL FRACTURE OR STIMULATE PLUG OFF OLD FORMATION PERFORATE NEW FORMATION OTHER PHYSICAL CHANGE IN WELL (SPECIFY)

PLUG AND ABANDON CLEAN OUT AND REPLUG
TARGET FORMATION POCAHONTAS NO. 3 AND PENN. COALS ESTIMATED DEPTH 1270'
WELL OPERATOR CDX GAS, LLC DESIGNATED AGENT JOSEPH ZUPANICK
ADDRESS P.O. BOX 609 ADDRESS P.O. BOX 609
PINEVILLE, WV 24874 PINEVILLE, WV 24874

WYO 2096 C

6.6 (27a)

State of West Virginia
Division of Environmental Protection
Section of Oil & Gas

Reviewed SPD

Well Operator's Report of Well Work

Farm name: U.S. Steel Mining Company

Operator Well No: 8FG-4a (93-C)

Location: Elevation: 2025.06

Quadrangle: Pineville

District: Center

County: WYOMING

Latitude: 6200 Feet South of 37 Deg. 32 Min. 30 Sec.
Longitude: 0 Feet West of 81 Deg. 35 Min. 00 Sec.

RECEIVED
Office of Oil & Gas
Permitting

OCT 11 2002

WV Department of
Environmental Protection

Company: CDX Gas, LLC
P.O. Box 609
Pineville, WV 24874

Agent: JOSEPH A. ZUPANICK

Inspector: Ronnie Scott
Permit Issued: 08/06/98-Original - 5-15-02-Re-work
Well Work commenced: 6/21/02
Well Work completed: 7/29/02
Verbal plugging
Permission granted on:
Rotary x Cable _____ Rig
Total depth (ft) 1332.17
Fresh water depths (ft) N/A
Salt water depths (ft) N/A
Is coal being mined in the area (Y/N)? Y
Coal depths (ft): 120', 185', 504', 512', 907', 912', 1269'

Casing & Tubing Size	Used in Drilling	Left in Well	Cement Fill up
17 1/2"	20'	20'	Surface
9 5/8"	485.15	485.15'	Surface
7"	1058'	1058'	Surface

OPEN FLOW DATA

Producing formation Pocahontas No. 3 Seam
 Gas: Initial open flow N/A Mcf/d Oil: Pay zone depth (ft) 1269'
 Final open flow N/A Mcf/d Initial open flow _____ Bbl/d
 Time of open flow between initial and final tests: _____ hours
 Static rock pressure _____ psig (surface pressure) after _____ hours

Second Producing formation _____
 Gas: Initial open flow N/A Mcf/d Oil: Pay zone depth (ft) _____
 Final open flow N/A Mcf/d Initial open flow _____ Bbl/d
 Time of open flow between initial and final tests: _____ hours
 Static rock pressure _____ psig (surface pressure) after _____ hours

Note: ON BACK OF THIS FORM, PUT THE FOLLOWING: 1) DETAILS OF PERFORATED INTERVALS, FRACTURING OR STIMULATING, PHYSICAL CHANGE, ETC. 2) THE WELL LOG WHICH IS A SYSTEMATICK DETAILED GEOLOGICAL RECORD OF ALL FORMATIONS, INCLUDING COAL ENCOUNTERED BY THE WELLBORE.

For: Steven Pauley
CDX Gas, LLC
By: Steven Pauley
Date: 10-8-02

OCT 25 2002

WYO 2096

Details of Perforated Intervals, Fracturing or Stimulation, Physical Change, Etc.

N/A

Well Log & Geologic Record - Depths from G.L.

Formation	Top	Bottom
Overburden	0	7
Sandy Shale	7	44
Shale	44	81
Sandy Shale	81	120
Coal	120	122
Shale	122	136
Sandy Shale	136	180
Shale	180	185
Coal	185	186.5
Shale	186.5	204
Sandy Shale	204	220
Shale	220	306
Sandy Shale	306	318
Shale	318	338
Sandy Shale	338	485
Shale	485	504
Coal	504	506
Shale	506	512
Coal	512	513
Shale	513	522
Sandy Shale	522	714
Shale	714	760
Sandy Shale	760	907
Coal	907	910
Shale	910	912
Coal	912	913
Sandy Shale	913	930
Shale	930	946
Sandy Shale	946	960
Shale	960	1004
Sandy Shale	1004	1025
Sandstone	1025	1088
Sandy Shale	1088	1132

RECEIVED
 Office of Oil & Gas
 Permitting
 OCT 11 2002
 WV Department of
 Environmental Protection

OCT 25 2002

Conti.

Shale	1132	1166
Sandstone	1166	1192
Sandy Shale	1192	1233
Shale	1233	1238
Sandy Shale	1238	1248
Shale	1248	1258
Sandy Shale	1258	1269
Coal	1269	1274
Shale	1274	1290
Sandy Shale	1290	1300
Shale	1300	1320
Sandy Shale	1320	1330

RECEIVED
Office of Oil & Gas
Permitting
OCT 11 2002
WV Department of
Environmental Protection

WYO 2096

State of West Virginia
Division of Environmental Protection
Section of Oil & Gas

AM

Well Operator's Report of Well Work

Farm name: U.S. Steel Mining Company

Operator Well No: 8FG-4a (93-C)

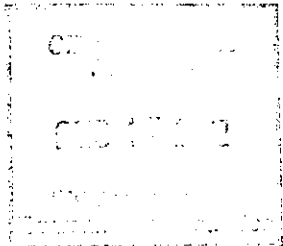
Location: Elevation: 2025.06

Quadrangle: Pineville

District: Center

County: WYOMING

Latitude: 6200 Feet South of 37 Deg. 32 Min. 30 Sec.
Longitude: 0 Feet West of 81 Deg. 35 Min. 00 Sec.



Company: CDX Gas, LLC
P.O. Box 609
Pineville, WV 24874

Agent: JOSEPH A. ZUPANICK

Inspector: Ronnie Scott
Permit Issued: 08/06/98-Original - 5-15-02-Re-work
Well Work commenced: 6/21/02
Well Work completed: 7/29/02
Verbal plugging
Permission granted on:
Rotary x Cable _____ Rig
Total depth (ft) 1332.17
Fresh water depths (ft) N/A
Salt water depths (ft) N/A
Is coal being mined in the area (Y/N)? Y
Coal depths (ft): 120', 185', 504', 512', 907', 912', 1269'

Casing & Tubing Size	Used in Drilling	Left in Well	Cement Fill up
17 1/2"	20'	20'	Surface
9 5/8"	485.15	485.15'	Surface
7"	1058'	1058'	Surface

OPEN FLOW DATA

Producing formation Pocahontas No. 3 Seam

Gas: Initial open flow N/A Mcf/d
Final open flow N/A Mcf/d

Pay zone depth (ft) 1269'
Oil: Initial open flow _____ Bbl/d
Final open flow _____ Bbl/d

Time of open flow between initial and final tests: _____ hours
Static rock pressure _____ psig (surface pressure) after _____ hours

Second Producing formation _____

Gas: Initial open flow N/A Mcf/d
Final open flow N/A Mcf/d

Pay zone depth (ft) _____
Oil: Initial open flow _____ Bbl/d
Final open flow _____ Bbl/d

Time of open flow between initial and final tests: _____ hours
Static rock pressure _____ psig (surface pressure) after _____ hours

Note: ON BACK OF THIS FORM, PUT THE FOLLOWING: 1) DETAILS OF PERFORATED INTERVALS, FRACTURING OR STIMULATING, PHYSICAL CHANGE, ETC. 2) THE WELL LOG WHICH IS A SYSTEMATICK DETAILED GEOLOGICAL RECORD OF ALL FORMATIONS, INCLUDING COAL ENCOUNTERED BY THE WELLBORE.

For: Steven Pauley
By: Steven Pauley
Date: 10-8-02

JAN 17 2003

WYO 2096

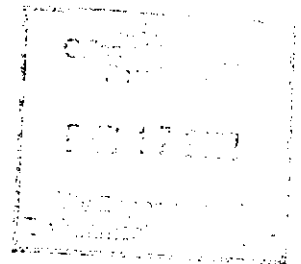
Operator: 8FG-4a (93-C)
 API No. 47-109-02096
 Location: Wyoming County

Details of Perforated Intervals, Fracturing or Stimulation, Physical Change, Etc.

N/A

Well Log & Geologic Record - Depths from G.L.

Formation	Top	Bottom
Overburden	0	7
Sandy Shale	7	44
Shale	44	81
Sandy Shale	81	120
Coal	120	122
Shale	122	136
Sandy Shale	136	180
Shale	180	185
Coal	185	186.5
Shale	186.5	204
Sandy Shale	204	220
Shale	220	306
Sandy Shale	306	318
Shale	318	338
Sandy Shale	338	485
Shale	485	504
Coal	504	506
Shale	506	512
Coal	512	513
Shale	513	522
Sandy Shale	522	714
Shale	714	760
Sandy Shale	760	907
Coal	907	910
Shale	910	912
Coal	912	913
Sandy Shale	913	930
Shale	930	946
Sandy Shale	946	960
Shale	960	1004
Sandy Shale	1004	1025
Sandstone	1025	1088
Sandy Shale	1088	1132



Conti.

Shale	1132	1166
Sandstone	1166	1192
Sandy Shale	1192	1233
Shale	1233	1238
Sandy Shale	1238	1248
Shale	1248	1258
Sandy Shale	1258	1269
Coal	1269	1274
Shale	1274	1290
Sandy Shale	1290	1300
Shale	1300	1320
Sandy Shale	1320	1330

FILED
JAN 17 2002
U.S. DEPARTMENT OF THE INTERIOR
BUREAU OF LAND MANAGEMENT

WYO 2096

JAN 17 2003